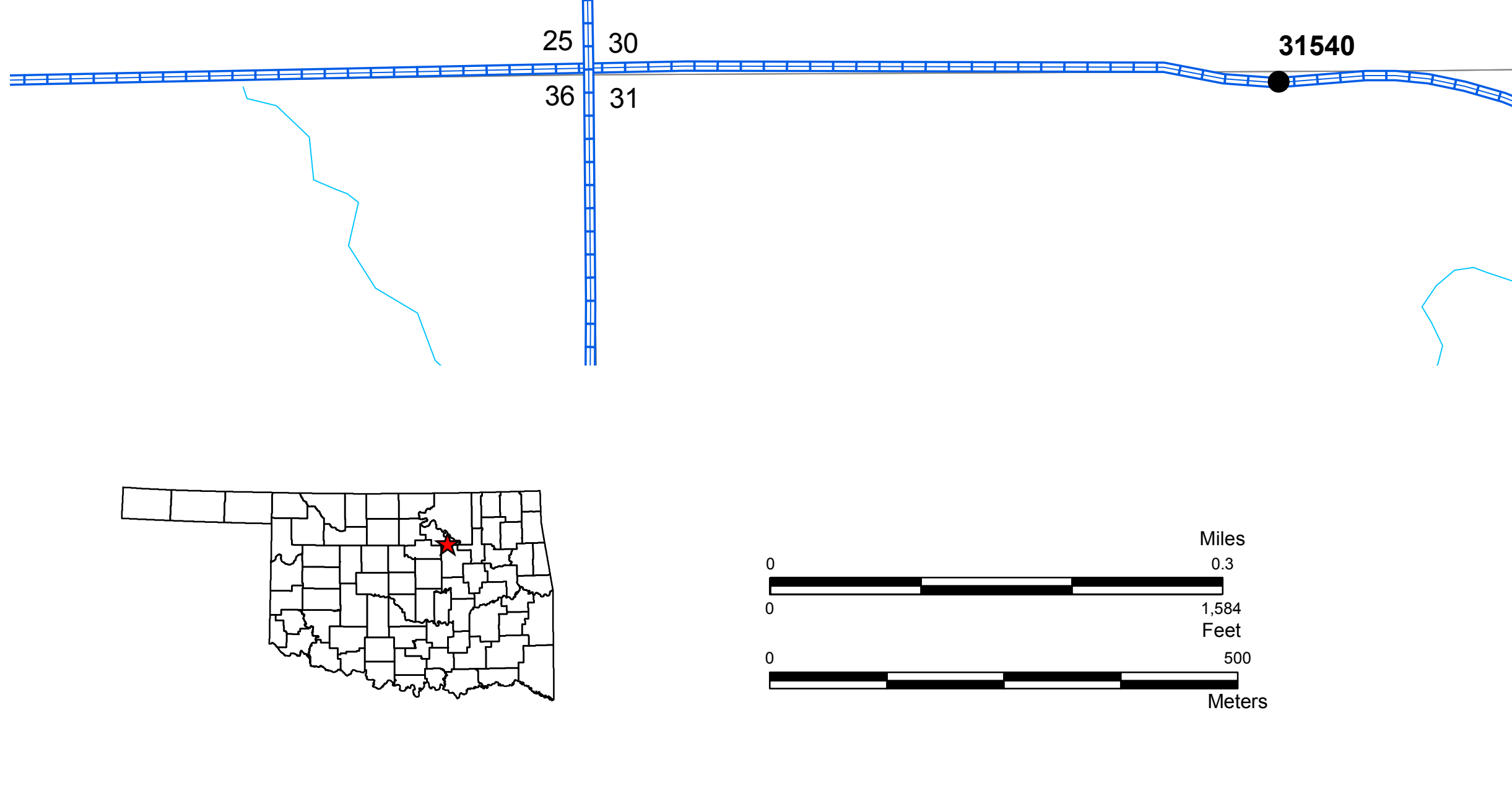
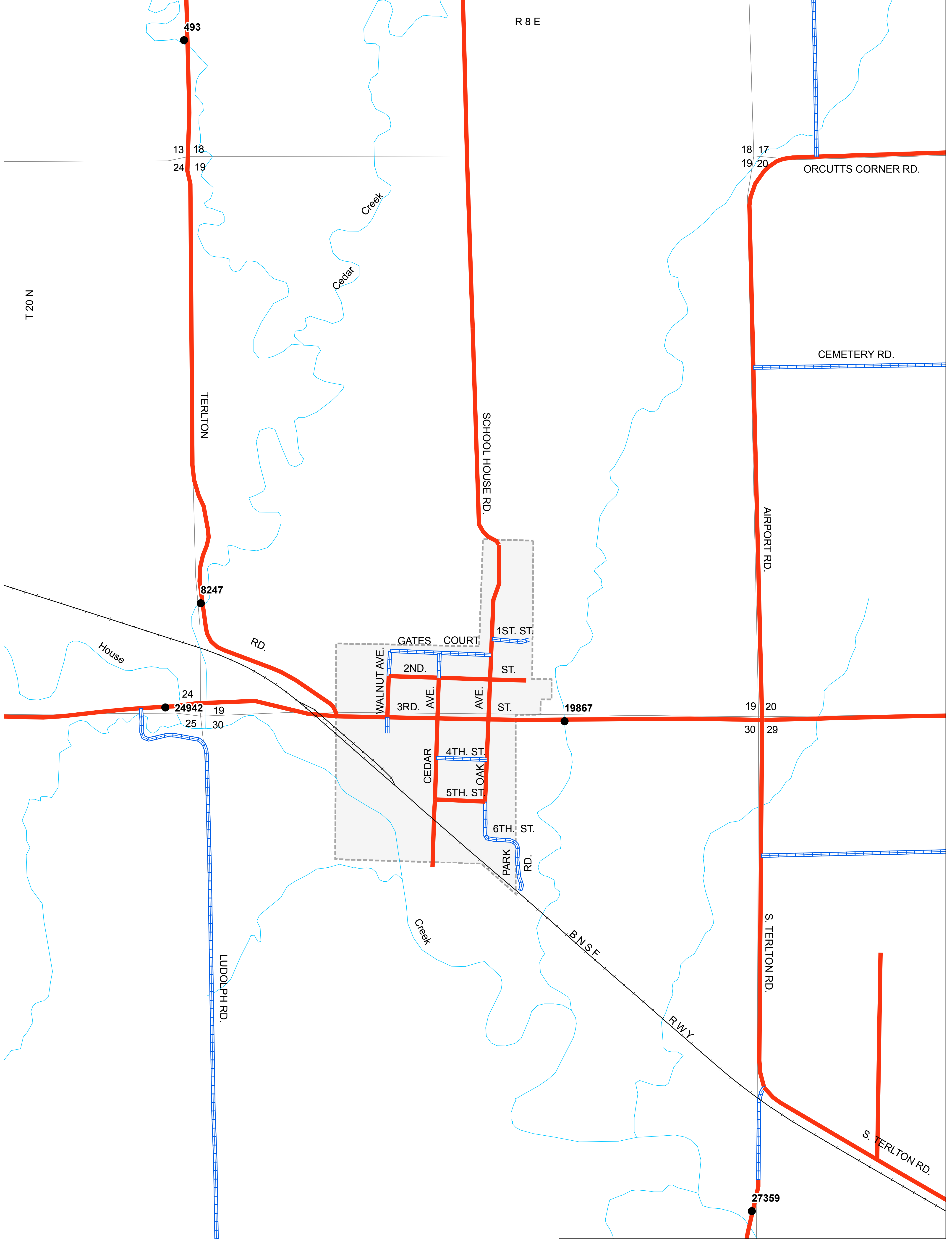


Copies of this map are available for public use at nominal cost.  
Address:  
OKLAHOMA DEPARTMENT OF TRANSPORTATION  
PRINTING SERVICES Phone (405) 521-2586  
200 N.E. 21st STREET  
OKLAHOMA CITY, OKLAHOMA 73105-3204

This map indicates those roads known to the Department to be open to public travel. Placement of a road on the map has no relationship to maintenance responsibility by any level of government.



**STATE OF OKLAHOMA  
DEPARTMENT OF TRANSPORTATION**

CITY OF  
**TERLTON**  
PAWNEE COUNTY  
CENSUS YEAR 2010  
POPULATION 106

**Legend**

	State Highway		Asphalt		County Line
	U.S. Highway		Concrete		State Line
	Interstate		Gravel		Section Line
	Divided Highway, 4 or more lanes		Grade & Drain		Wildlife Management Area
	Asphalt		Unimproved		Wildlife Refuge
	Concrete		Railroad		River or Stream
	Corporate Limit		Lake or Reservoir		Bridges
	Terilton		Low Water Crossing		