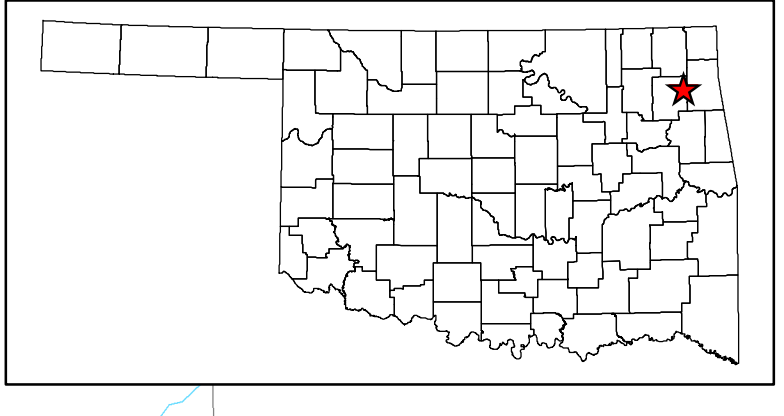
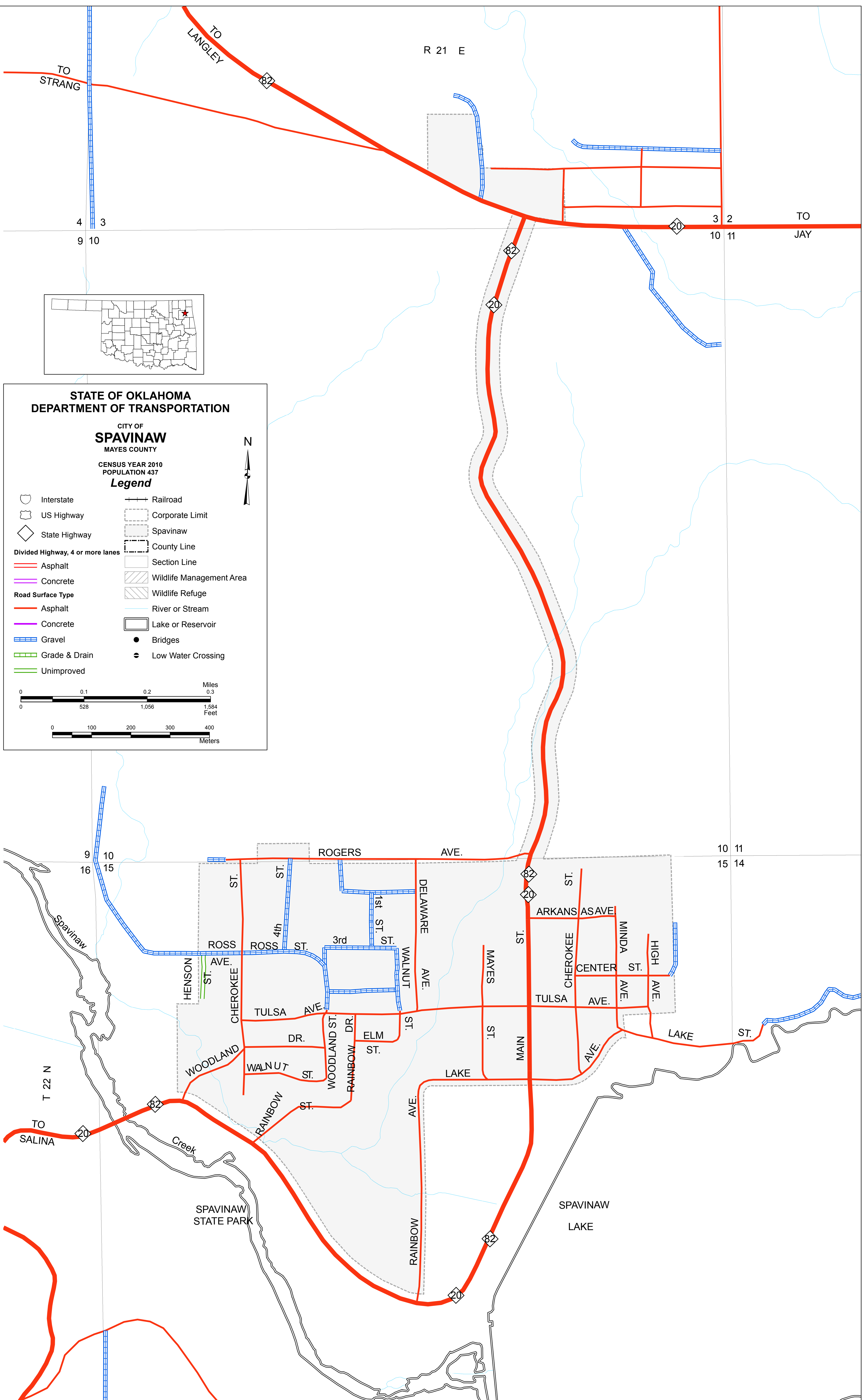


Copies of this map are available for public use at nominal cost.
OKLAHOMA DEPARTMENT OF TRANSPORTATION
PRINTING SERVICES Phone (405) 521-2596
200 N.E. 21st STREET
OKLAHOMA CITY, OKLAHOMA 73105-3204

This map indicates those roads known to the Department to be open to public travel. Placement of a road on the map has no relationship to maintenance responsibility by any level of government.



**STATE OF OKLAHOMA
DEPARTMENT OF TRANSPORTATION**

**CITY OF
SPAVINAW**
MAYES COUNTY

CENSUS YEAR 2010
POPULATION 437

Legend

	Railroad
	Corporate Limit
	Spavinaw
	County Line
	Section Line
	Wildlife Management Area
	Wildlife Refuge
	River or Stream
	Lake or Reservoir
	● Bridges
	◐ Low Water Crossing

Miles: 0, 0.1, 0.2, 0.3
Feet: 0, 528, 1,056, 1,584
Meters: 0, 100, 200, 300, 400

TO LANGLEY
TO STRANG
TO JAY
R 21 E
9 10
3 2
10 11
9 10
16 15
10 11
15 14
T 22 N
TO SALINA
Creek
SPAVINAW STATE PARK
SPAVINAW LAKE
ROGERS AVE.
DELAWARE AVE.
WALNUT AVE.
MAYES ST.
MAIN ST.
LAKE AVE.
ARKANSAS AVE.
CHEROKEE ST.
MINDA AVE.
HIGH AVE.
ROSS ST.
ROSS 4th ST.
ROSS 3rd ST.
1st ST.
WALNUT ST.
TULSA AVE.
TULSA AVE.
HENSON AVE.
CHEROKEE ST.
WOODLAND DR.
WALNUT ST.
WOODLAND ST.
RAINBOW DR.
ELM ST.
RAINBOW ST.
RAINBOW ST.
LAKE ST.