

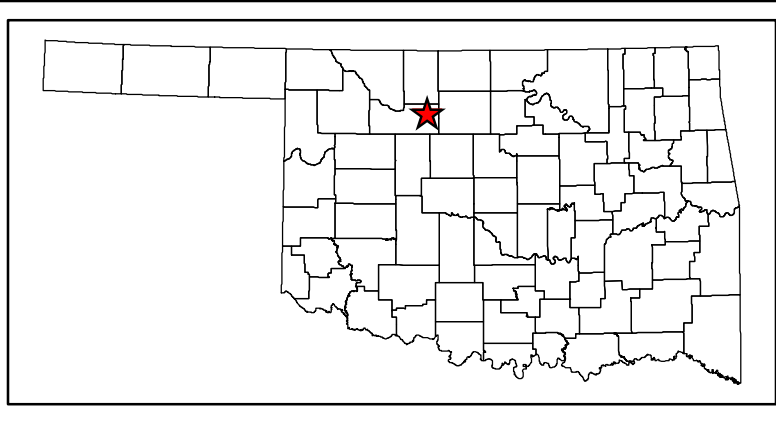
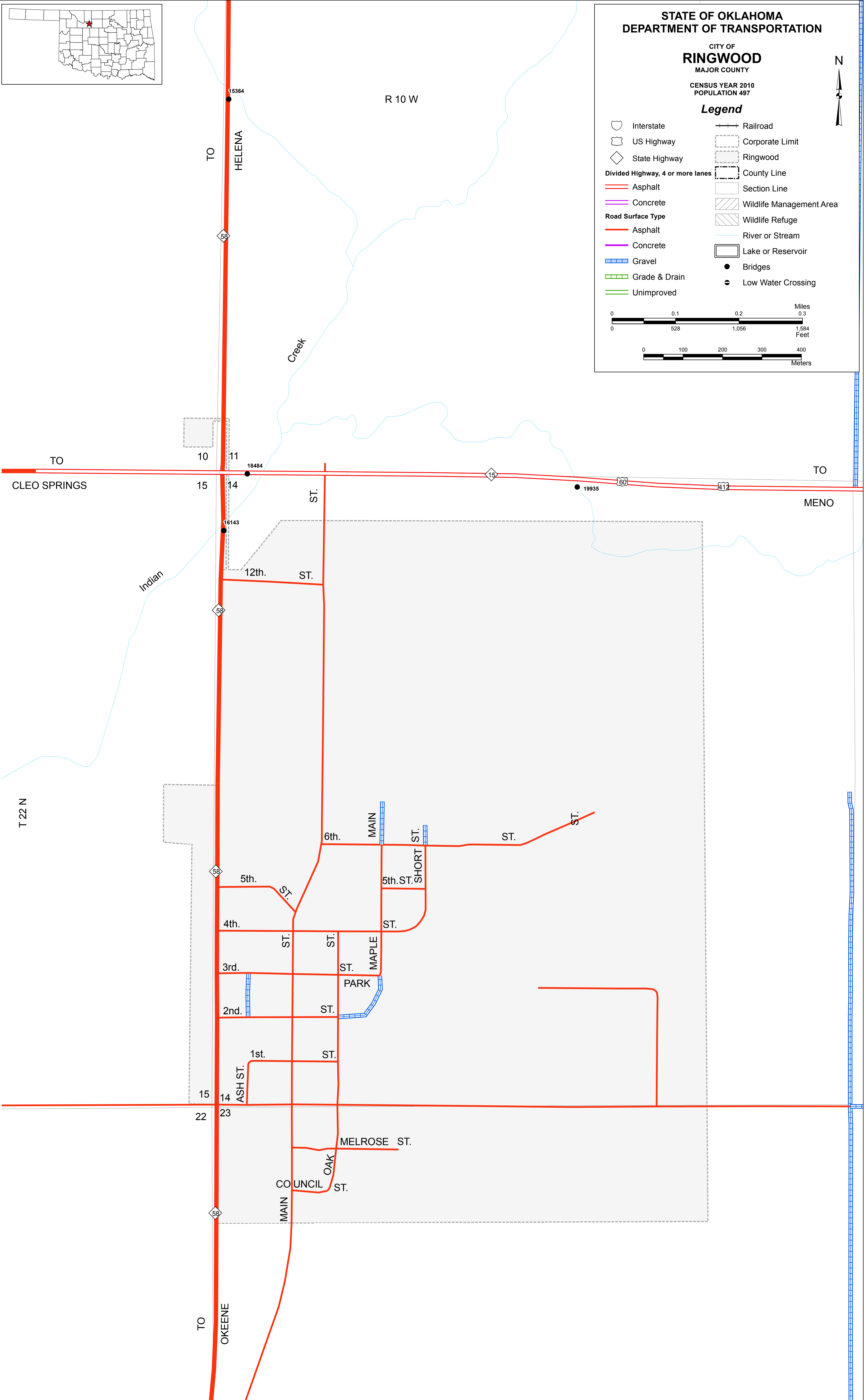
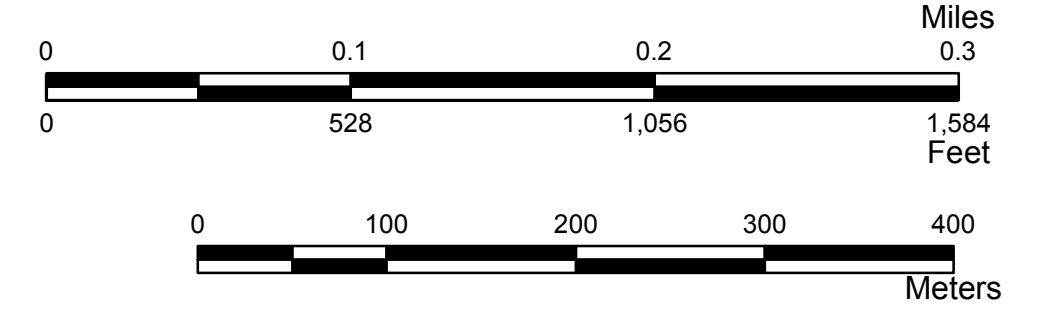
STATE OF OKLAHOMA  
DEPARTMENT OF TRANSPORTATION

CITY OF  
**RINGWOOD**  
MAJOR COUNTY

CENSUS YEAR 2010  
POPULATION 497

**Legend**

- |  |                                  |  |                          |
|--|----------------------------------|--|--------------------------|
|  | Interstate                       |  | Railroad                 |
|  | US Highway                       |  | Corporate Limit          |
|  | State Highway                    |  | Ringwood                 |
|  | Divided Highway, 4 or more lanes |  | County Line              |
|  | Asphalt                          |  | Section Line             |
|  | Concrete                         |  | Wildlife Management Area |
|  | Gravel                           |  | Wildlife Refuge          |
|  | Grade & Drain                    |  | River or Stream          |
|  | Unimproved                       |  | Lake or Reservoir        |
|  |                                  |  | Bridges                  |
|  |                                  |  | Low Water Crossing       |



Copies of this map are available for public use at nominal cost.  
OKLAHOMA DEPARTMENT OF TRANSPORTATION  
PRINTING SERVICES Phone (405) 521-2596  
200 N.E. 21st STREET  
OKLAHOMA CITY, OKLAHOMA 73105-3204

This map indicates those roads known to the Department to be open to public travel. Placement of a road on the map has no relationship to maintenance responsibility by any level of government.

© COPYRIGHT 2018  
PRINTED AT STATE EXPENSE

**NOT FOR RESALE**

ALL RIGHTS RESERVED  
COMPUTER GENERATED  
RINGWOOD, MAJOR COUNTY  
September, 2018