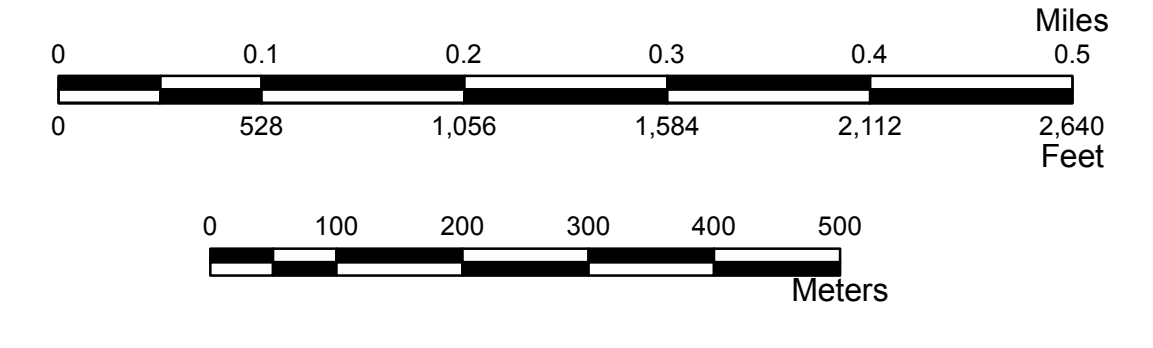
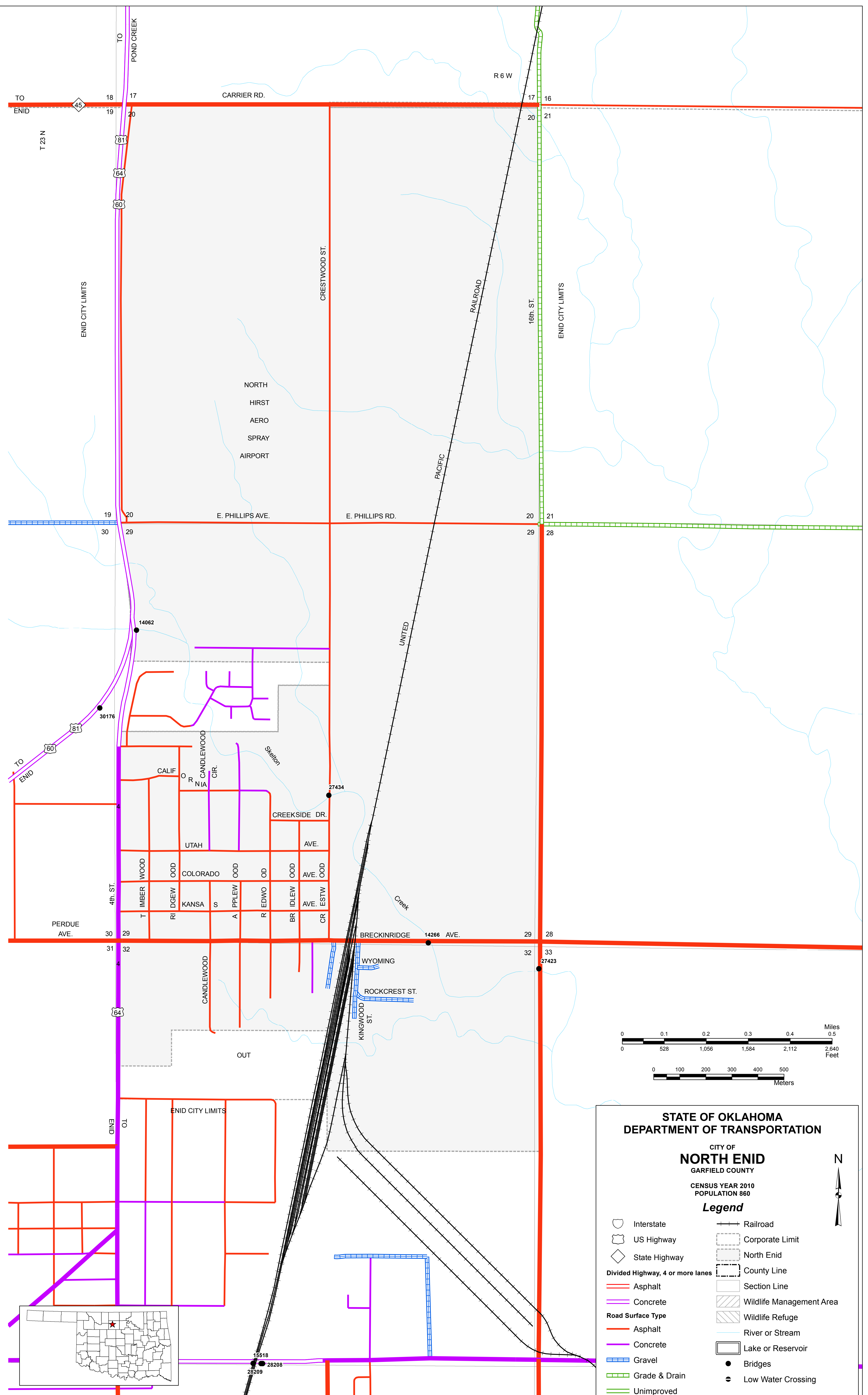


NORTH END
 © COPYRIGHT 2018
 PRINTED AT STATE EXPENSE
NOT FOR RESALE
 ALL RIGHTS RESERVED
 COMPUTER GENERATED
 September 2018
 NORTH END, GARFIELD COUNTY

Copies of this map are available for public use at nominal cost.
 OKLAHOMA DEPARTMENT OF TRANSPORTATION
 PRINTING SERVICES Phone (405) 521-2586
 200 N.E. 21st STREET
 OKLAHOMA CITY, OKLAHOMA 73105-3204
 This map indicates those roads known to the Department to be open to public travel. Placement of a road on the map has no relationship to maintenance responsibility by any level of government.



STATE OF OKLAHOMA
DEPARTMENT OF TRANSPORTATION
 CITY OF
NORTH END
 GARFIELD COUNTY
 CENSUS YEAR 2010
 POPULATION 860

Legend

	Interstate		Railroad
	US Highway		Corporate Limit
	State Highway		North End
	Divided Highway, 4 or more lanes		County Line
	Asphalt		Section Line
	Concrete		Wildlife Management Area
	Gravel		Wildlife Refuge
	Grade & Drain		River or Stream
	Unimproved		Lake or Reservoir
			Bridges
			Low Water Crossing

