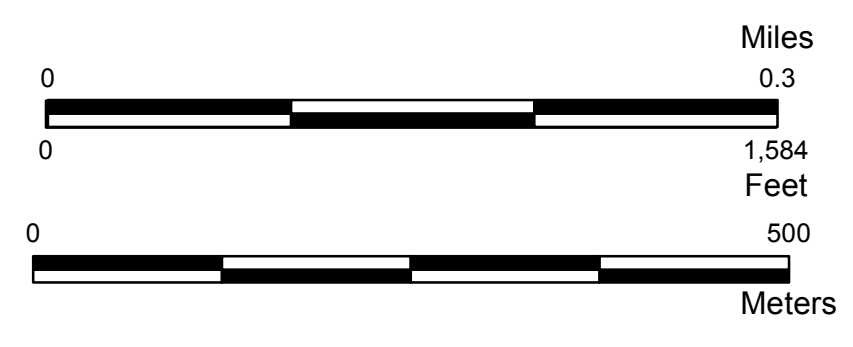
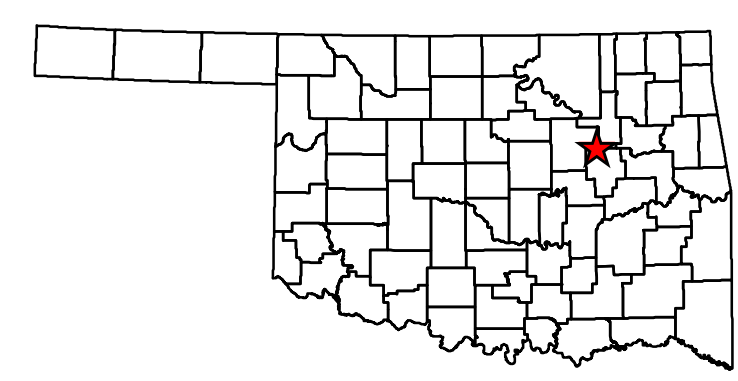
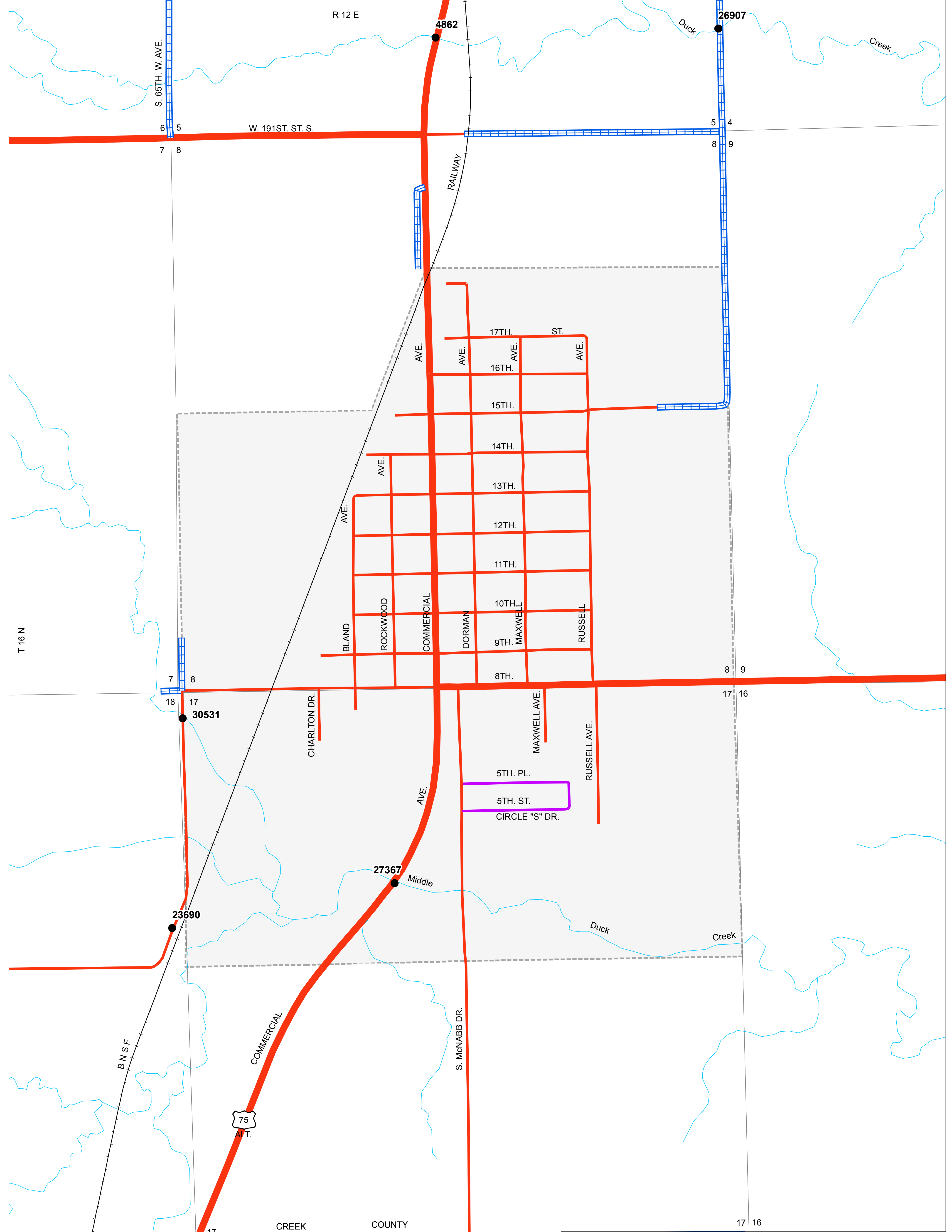


Copies of this map are available for public use at nominal cost.  
 Address:  
 OKLAHOMA DEPARTMENT OF TRANSPORTATION  
 PRINTING SERVICES Phone (405) 521-2586  
 200 N.E. 21st STREET  
 OKLAHOMA CITY, OKLAHOMA 73105-3204

This map indicates those roads known to the Department to be open to public travel. Placement of a road on the map has no relationship to maintenance responsibility by any level of government.



STATE OF OKLAHOMA  
 DEPARTMENT OF TRANSPORTATION

CITY OF  
**MOUNDS**  
 CARTER COUNTY

CENSUS YEAR 2010  
 POPULATION 1,168

**Legend**

- |                                  |                 |                          |
|----------------------------------|-----------------|--------------------------|
| State Highway                    | Asphalt         | County Line              |
| U.S. Highway                     | Concrete        | State Line               |
| Interstate                       | Gravel          | Section Line             |
| Divided Highway, 4 or more lanes | Grade & Drain   | Wildlife Management Area |
| Asphalt                          | Unimproved      | Wildlife Refuge          |
| Concrete                         | Railroad        | River or Stream          |
|                                  | Corporate Limit | Lake or Reservoir        |
|                                  | Mounds          | Bridges                  |
|                                  |                 | Low Water Crossing       |