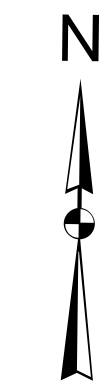
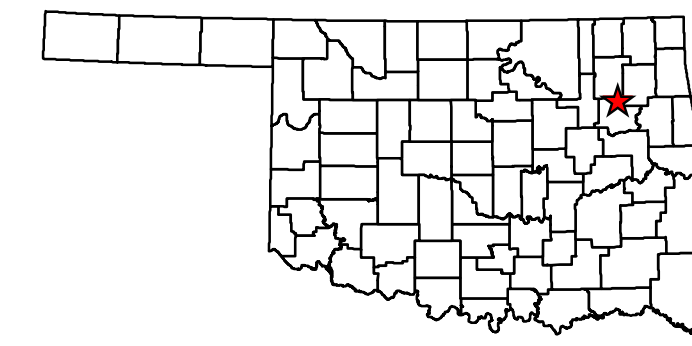


Legend

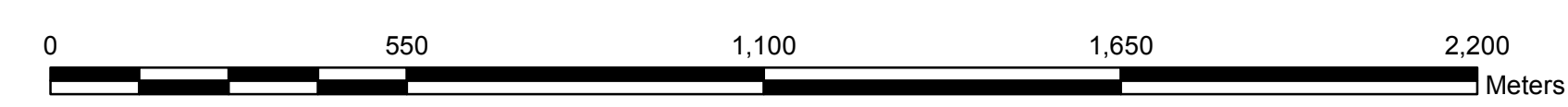
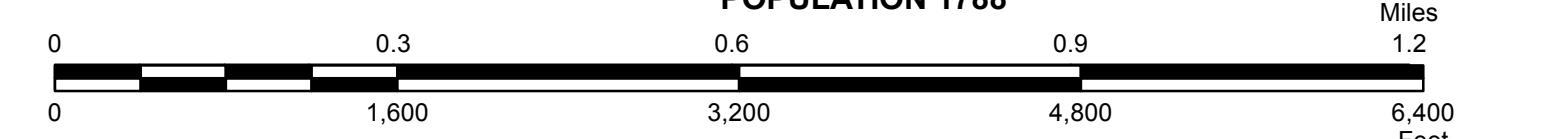
- | | | | | | | | |
|---|------------|--|---------------|--|--------------------------|--|--------------------|
| | Interstate | | Asphalt | | Corporate Limit | | Bridges |
| | State | | Concrete | | INOLA | | Low Water Crossing |
| | US | | Gravel | | County Line | | Railroad |
| Divided Highway, 4 or more lanes | | | Grade & Drain | | Section Line | | River or Stream |
| | Asphalt | | Unimproved | | Wildlife Management Area | | Lake or Reservoir |
| | Concrete | | | | Wildlife Refuge | | |



STATE OF OKLAHOMA
DEPARTMENT OF TRANSPORTATION

CITY OF
INOLA
ROGERS COUNTY

CENSUS YEAR 2010
POPULATION 1788



Copies of this map are available for public use at nominal cost.
Address:
OKLAHOMA DEPARTMENT OF TRANSPORTATION
PRINTING SERVICES Phone (405) 521-2586
200 N.E. 21st STREET
OKLAHOMA CITY, OKLAHOMA 73105-3204

This map indicates those roads known to the Department to be open to public travel. Placement of a road on the map has no relationship to maintenance responsibility by any level of government.

© COPYRIGHT 2018
PRINTED AT STATE EXPENSE

NOT FOR RESALE

ALL RIGHTS RESERVED COMPUTER GENERATED September, 2018