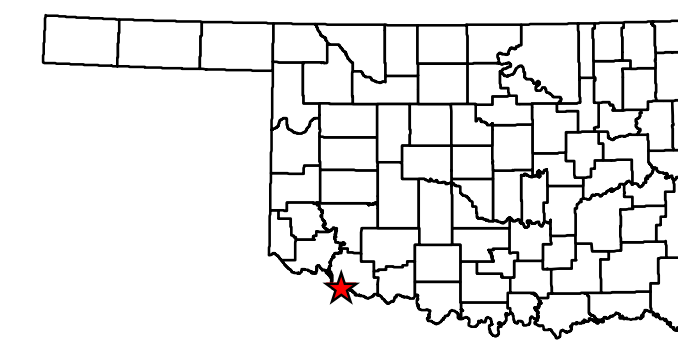


Copies of this map are available for public use at nominal cost.  
 Address:  
 OKLAHOMA DEPARTMENT OF TRANSPORTATION  
 PRINTING SERVICES Phone (405) 521-2586  
 200 N.E. 21st STREET  
 OKLAHOMA CITY, OKLAHOMA 73105-3204

This map indicates those roads known to the Department to be open to public travel. Placement of a road on the map has no relationship to maintenance responsibility by any level of government.

**Legend**

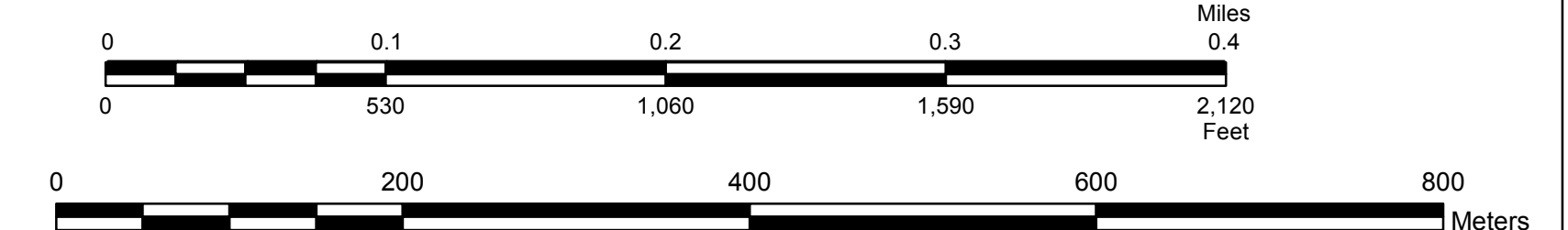
- |  |   |  |                          |  |                          |  |                    |
|--|---|--|--------------------------|--|--------------------------|--|--------------------|
|  | Interstate                              |  | <b>Road Surface Type</b> |  | Corporate Limit          |  | Bridges            |
|  | State                                   |  | Asphalt                  |  | DAVIDSON                 |  | Low Water Crossing |
|  | US                                      |  | Concrete                 |  | County Line              |  | Railroad           |
|  | <b>Divided Highway, 4 or more lanes</b> |  | Gravel                   |  | Section Line             |  | River or Stream    |
|  | Asphalt                                 |  | Grade & Drain            |  | Wildlife Management Area |  | Lake or Reservoir  |
|  | Concrete                                |  | Unimproved               |  | Wildlife Refuge          |  |                    |



STATE OF OKLAHOMA  
 DEPARTMENT OF TRANSPORTATION

CITY OF  
**DAVIDSON**  
 TILLMAN COUNTY

CENSUS YEAR 2010  
 POPULATION 315



ALL RIGHTS RESERVED    COMPUTER GENERATED    September, 2018