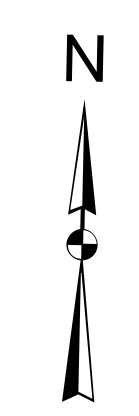
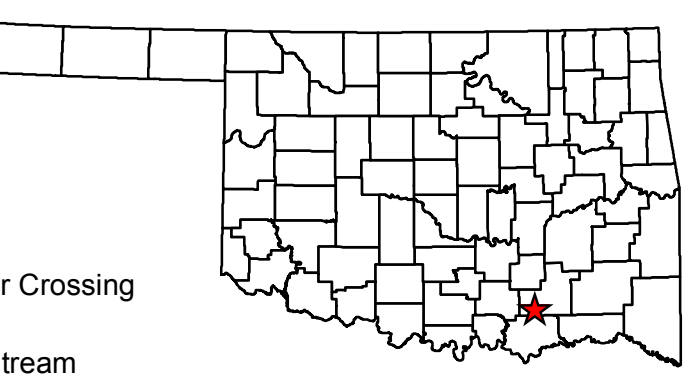
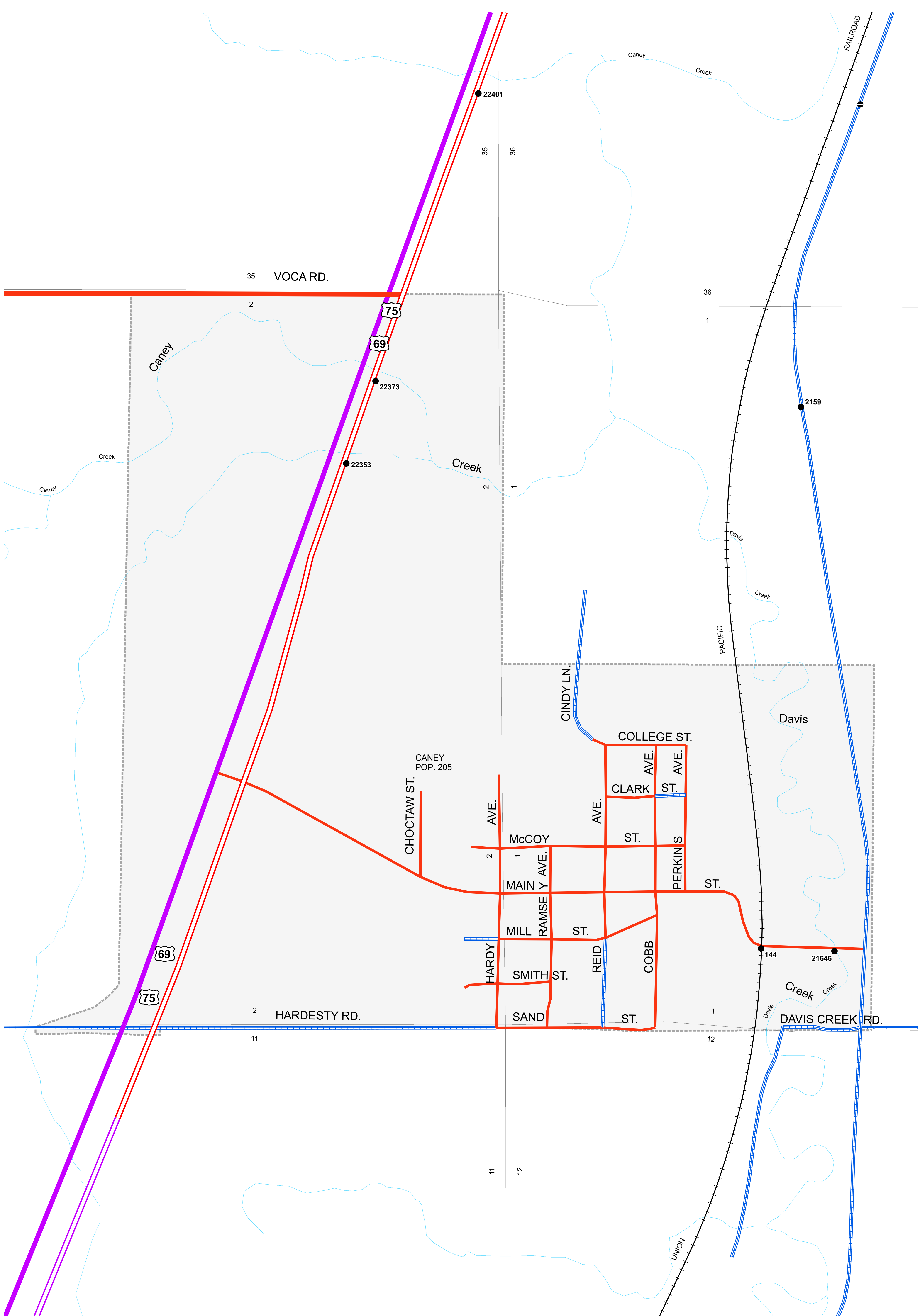


Copies of this map are available for public use at nominal cost.  
OKLAHOMA DEPARTMENT OF TRANSPORTATION  
PRINTING SERVICES Phone (405) 521-2586  
200 N.E. 21st STREET  
OKLAHOMA CITY, OKLAHOMA 73105-3204

This map indicates those roads known to the Department to be open to public travel. Placement of a road on the map has no relationship to maintenance responsibility by any level of government.



STATE OF OKLAHOMA  
DEPARTMENT OF TRANSPORTATION  
CITY OF  
**CANEY**  
ATOKA COUNTY  
CENSUS YEAR 2010  
POPULATION 205

**Legend**

- |  |                                  |  |               |  |                          |  |                    |
|--|----------------------------------|--|---------------|--|--------------------------|--|--------------------|
|  | Interstate                       |  | Asphalt       |  | Corporate Limit          |  | Bridges            |
|  | State                            |  | Concrete      |  | CANEY                    |  | Low Water Crossing |
|  | US                               |  | Gravel        |  | County Line              |  | River or Stream    |
|  | Railroad                         |  | Grade & Drain |  | Section Line             |  | Lake or Reservoir  |
|  | Divided Highway, 4 or more lanes |  | Unimproved    |  | Wildlife Management Area |  |                    |
|  | Asphalt                          |  |               |  | Wildlife Refuge          |  |                    |
|  | Concrete                         |  |               |  |                          |  |                    |

