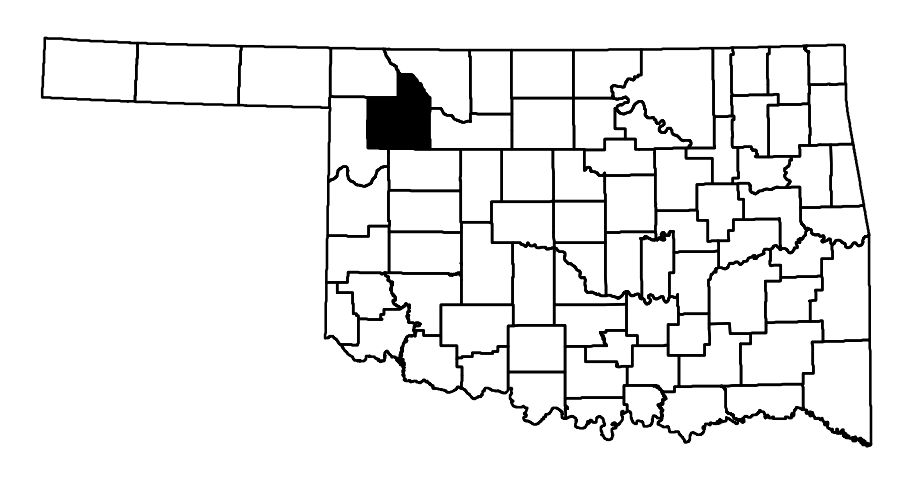
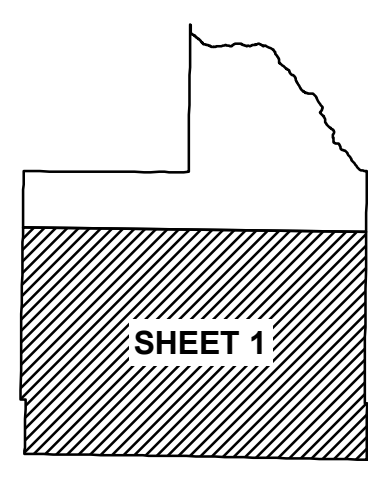


COPIES OF THIS MAP ARE AVAILABLE FOR PUBLIC USE AT NOMINAL COST.  
 Address: OKLAHOMA DEPARTMENT OF TRANSPORTATION  
 PRINTING SERVICES Phone (405) 521-2586  
 200 N.E. 21st STREET  
 OKLAHOMA CITY, OKLAHOMA 73105-3204

This map indicates those roads known to the Department to be open to public travel. Placement of a road on the map has no relationship to maintenance responsibility by any level of government.

ALL DATA CURRENT AS OF DATE LISTED BELOW  
 October 2, 2018



- Legend**
- Interstate Highway
  - US Highway
  - State Highway
  - Divided Highway - Asphalt
  - Divided Highway - Concrete
  - Asphalt
  - Concrete
  - Gravel
  - Grade & Drain
  - Unimproved
  - Railroad
  - State Line
  - County Line
  - Section Line
  - Corporate Limit
  - Wildlife Management Area
  - Wildlife Refuge
  - River or Stream
  - Lake or Reservoir
  - Bridges
  - Low Water Crossing
  - Natural Elevation Point
  - Natural Elevation Point

**GENERAL HIGHWAY MAP  
 WOODWARD COUNTY  
 OKLAHOMA**

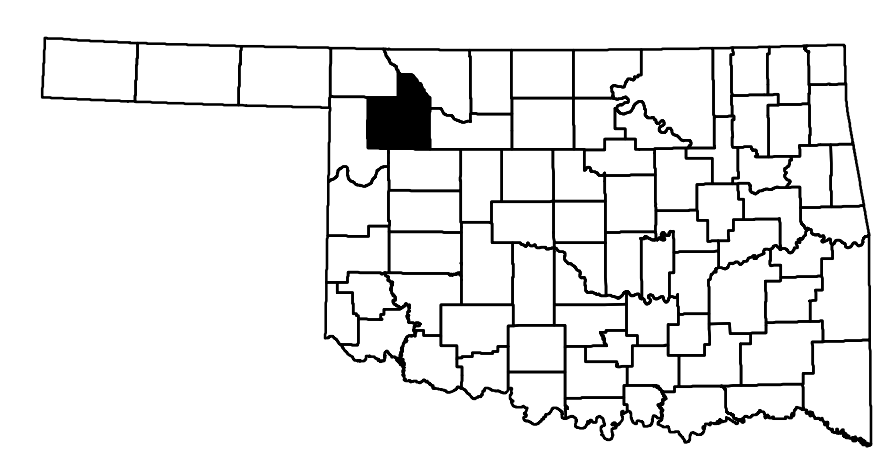
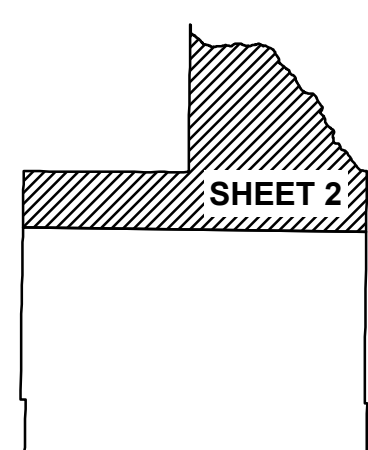
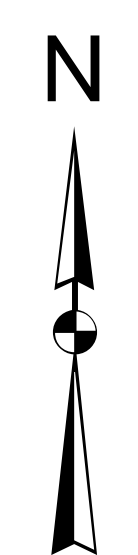
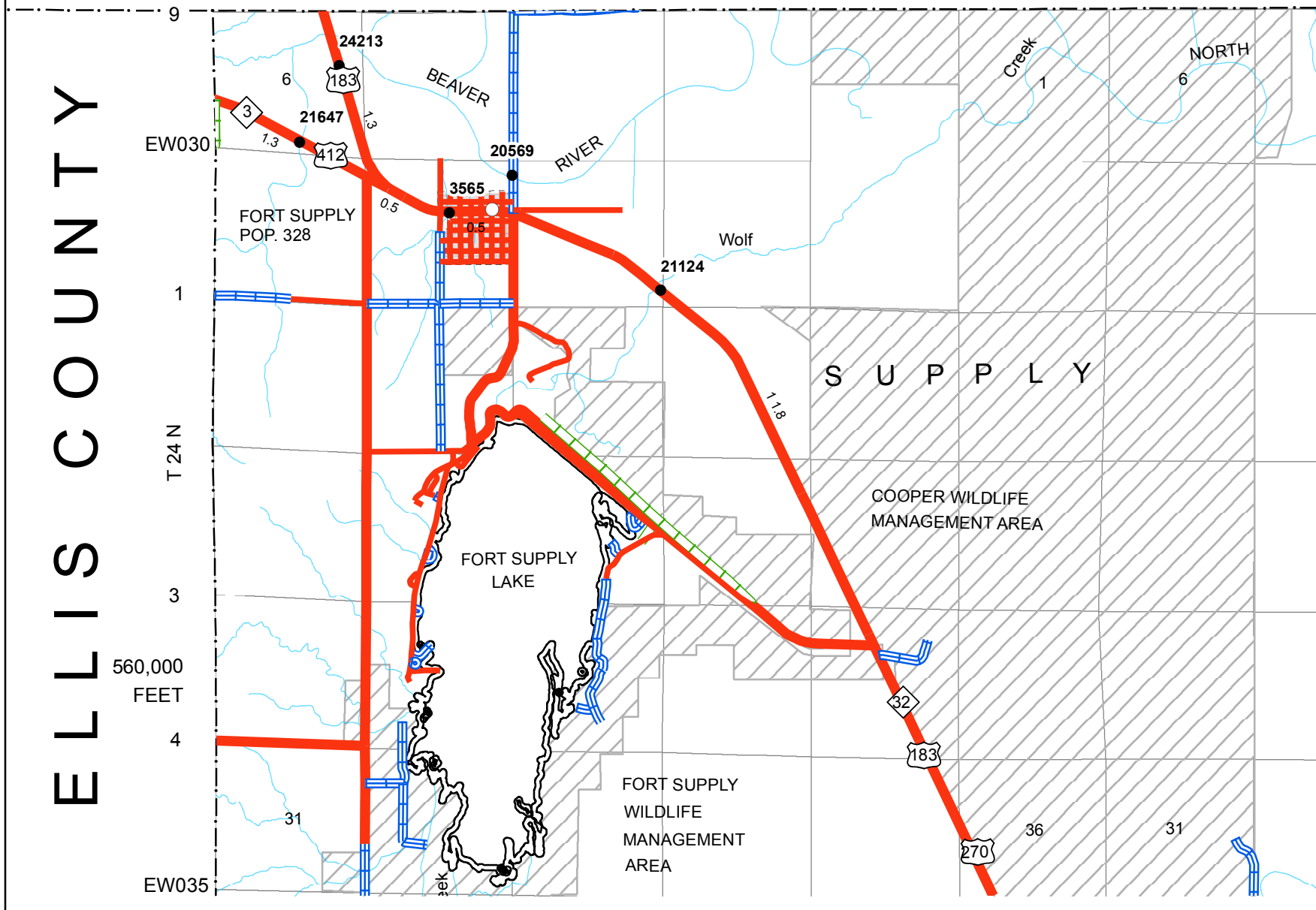
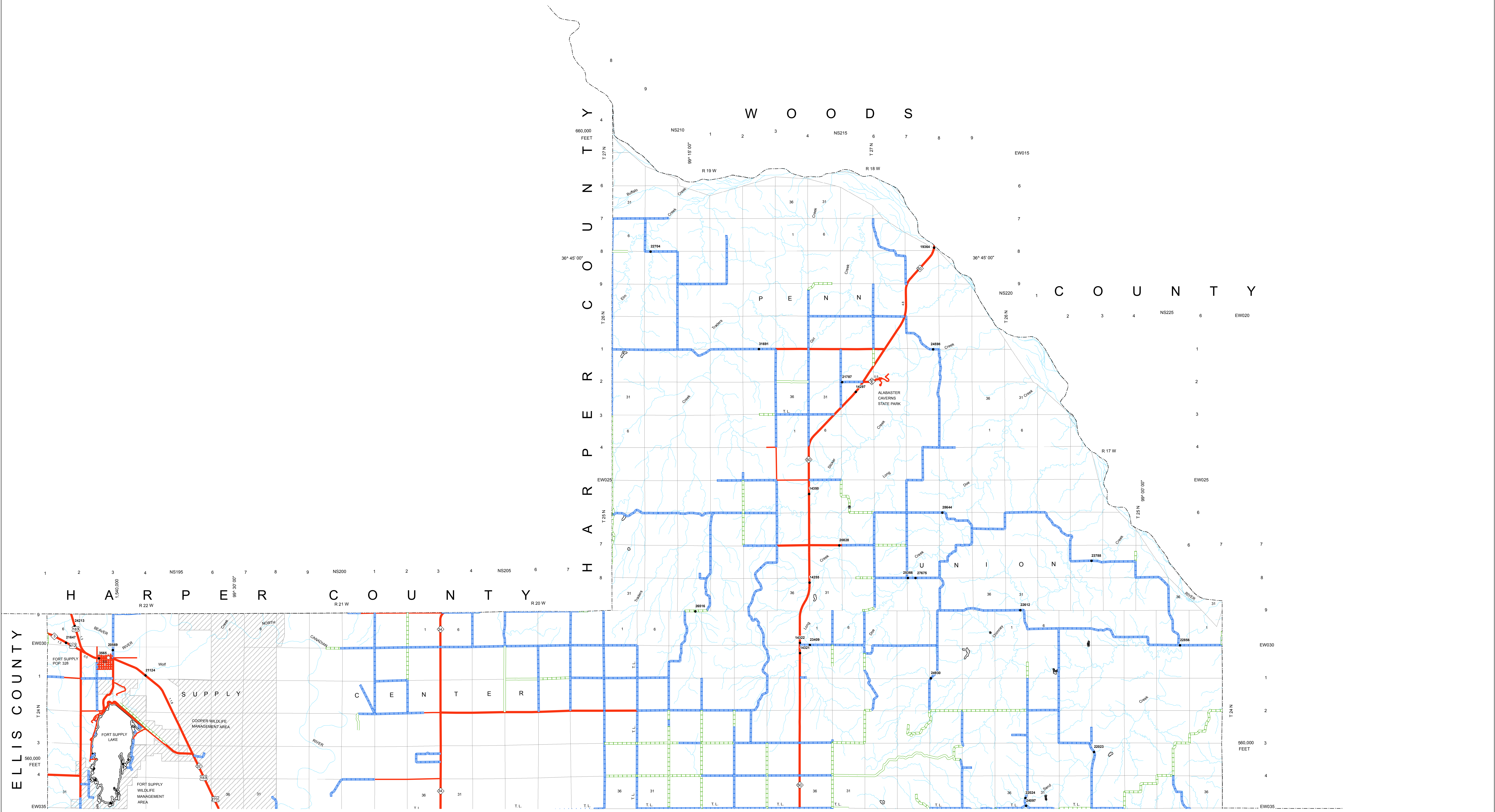
PREPARED BY THE  
 OKLAHOMA DEPARTMENT OF TRANSPORTATION  
 STRATEGIC ASSET AND PERFORMANCE  
 MANAGEMENT DIVISION

IN COOPERATION WITH THE  
 U.S. DEPARTMENT OF TRANSPORTATION  
 FEDERAL HIGHWAY ADMINISTRATION

SCALE IN MILES  
 0 1 2 3 4 5 Miles

SCALE IN KILOMETERS  
 0 1 2 3 4 5 6 7 8 9 10 Kilometers

LAMBERT CONFORMAL CONIC PROJECTION U.S. & GEOIDETIC SURVEY DATA  
 20,000 FOOT GRID, OKLAHOMA PLANE COORDINATE SYSTEM NORTH PROJECTION ZONE  
 POPULATION FIGURES BASED ON 2010 U.S. CENSUS  
 CO. POP. 20,081

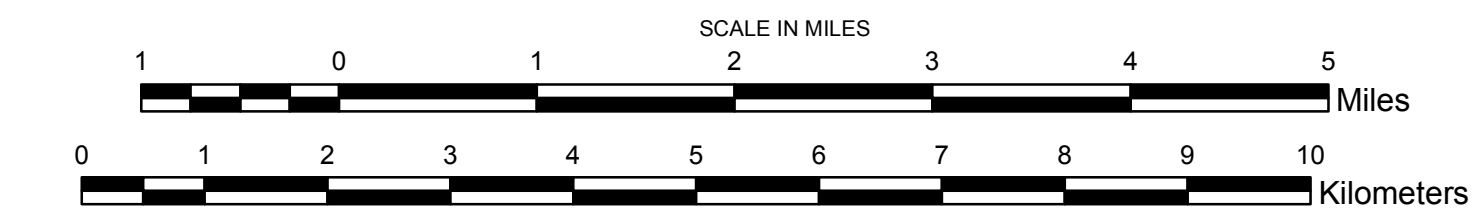


- Legend**
- Interstate Highway
  - US Highway
  - State Highway
  - Divided Highway - Asphalt
  - Divided Highway - Concrete
  - Asphalt
  - Concrete
  - Gravel
  - Grade & Drain
  - Unimproved
  - Railroad
  - State Line
  - County Line
  - Section Line
  - Corporate Limit
  - Wildlife Management Area
  - Wildlife Refuge
  - River or Stream
  - Lake or Reservoir
  - Bridges
  - Low Water Crossing
  - Natural Elevation Point
  - Natural Elevation Point

**GENERAL HIGHWAY MAP  
WOODWARD COUNTY  
OKLAHOMA**

PREPARED BY THE  
OKLAHOMA DEPARTMENT OF TRANSPORTATION  
STRATEGIC ASSET AND PERFORMANCE  
MANAGEMENT DIVISION

IN COOPERATION WITH THE  
U.S. DEPARTMENT OF TRANSPORTATION  
FEDERAL HIGHWAY ADMINISTRATION



Copies of this map are available for public use at nominal cost.  
Address:  
OKLAHOMA DEPARTMENT OF TRANSPORTATION  
PRINTING SERVICES Phone (405) 521-2586  
200 N.E. 21st STREET  
OKLAHOMA CITY, OKLAHOMA 73105-3204

This map indicates those roads known to the Department to be open to public travel. Placement of a road on the map has no relationship to maintenance responsibility by any level of government.

ALL DATA CURRENT AS OF DATE LISTED BELOW  
October 2, 2018

ALL RIGHTS RESERVED COMPUTER GENERATED