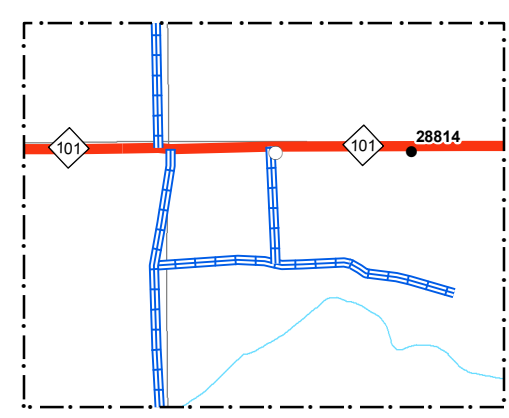
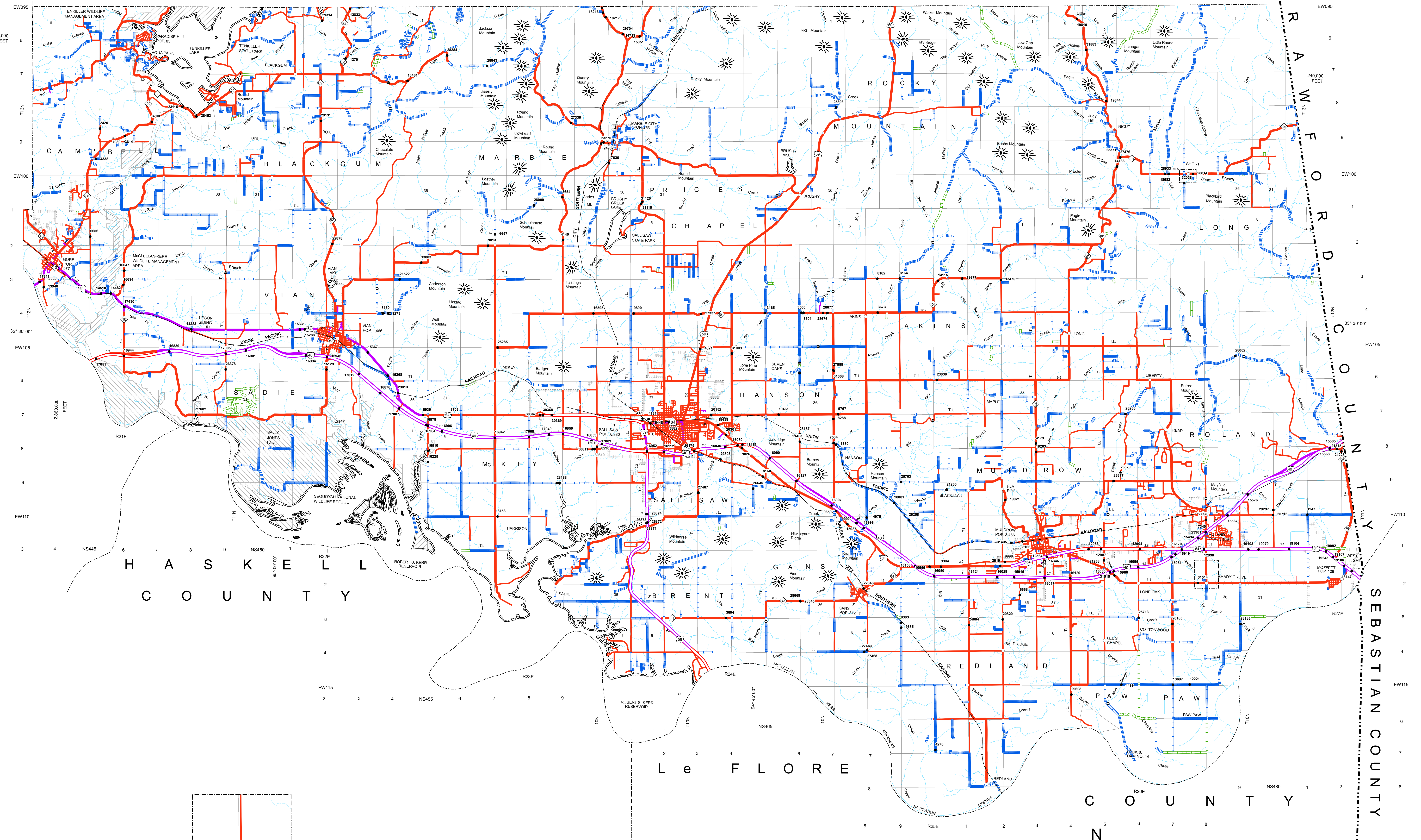


SEQUOYA COUNTY

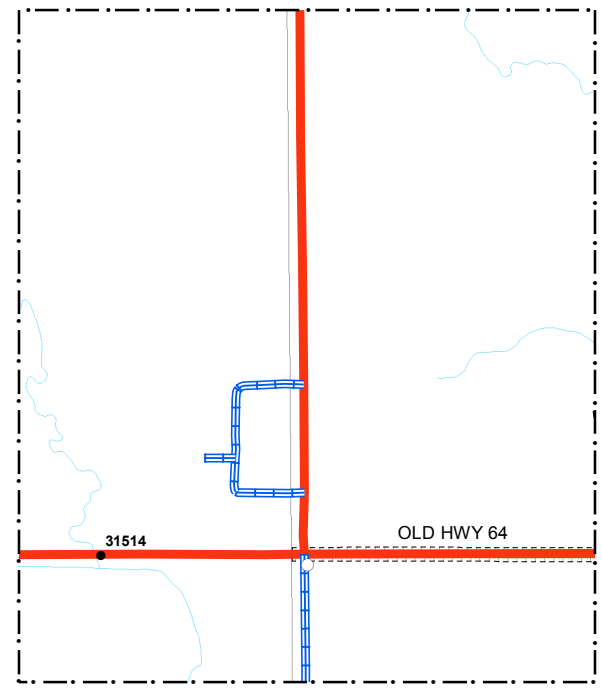
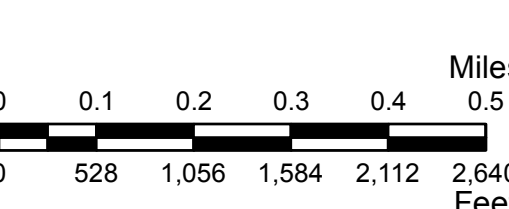
CHEROKEE COUNTY ADAIR COUNTY

STATE OF ARKANSAS

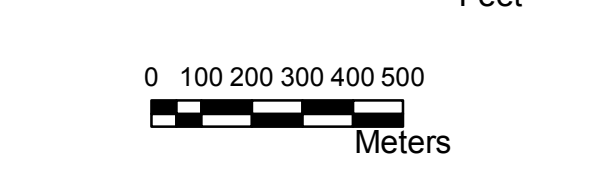
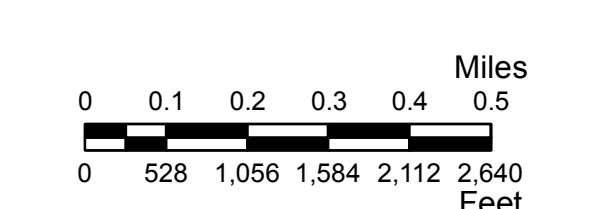
SEBASTIAN COUNTY



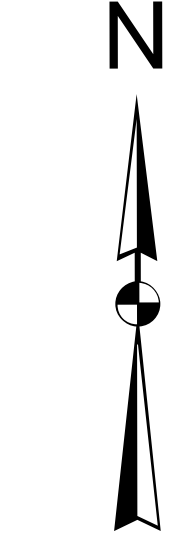
SHORT  
SEC. 26, 27, 34, 35, T 12 N, R 26 E



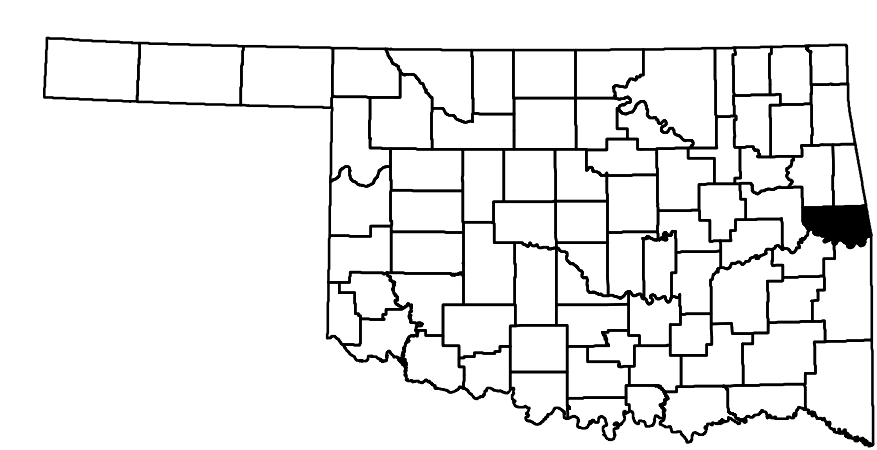
SHADY GROVE  
SEC. 25, 26, 35, 36, T 11 N, R 26 E



- Legend**
- Interstate Highway
  - US Highway
  - State Highway
  - Divided Highway - Asphalt
  - Divided Highway - Concrete
  - Asphalt
  - Concrete
  - Gravel
  - Grade & Drain
  - Unimproved
  - Railroad
  - State Line
  - County Line
  - Section Line
  - Corporate Limit
  - Wildlife Management Area
  - Wildlife Refuge
  - River or Stream
  - Lake or Reservoir
  - Bridges
  - Low Water Crossing
  - Natural Elevation Point
  - Natural Elevation Point

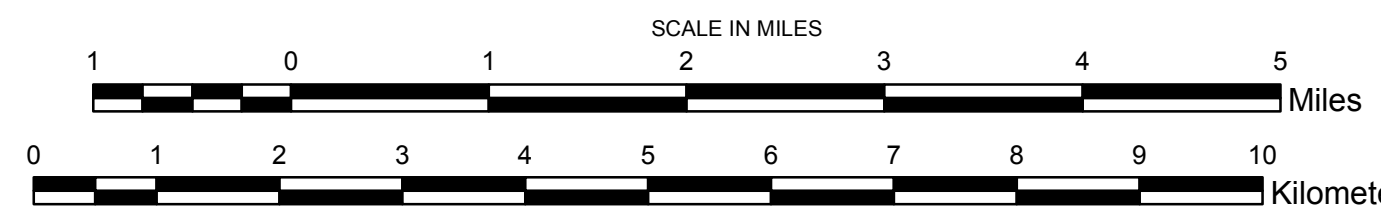


ALL DATA CURRENT AS OF DATE LISTED BELOW  
October 2, 2018



**GENERAL HIGHWAY MAP  
SEQUOYAH COUNTY  
OKLAHOMA**

PREPARED BY THE  
OKLAHOMA DEPARTMENT OF TRANSPORTATION  
STRATEGIC ASSET AND PERFORMANCE  
MANAGEMENT DIVISION  
IN COOPERATION WITH THE  
U.S. DEPARTMENT OF TRANSPORTATION  
FEDERAL HIGHWAY ADMINISTRATION



Copies of this map are available for public use at nominal cost.  
Address:  
OKLAHOMA DEPARTMENT OF TRANSPORTATION  
PRINTING SERVICES Phone (405) 521-2586  
200 N.E. 21st STREET  
OKLAHOMA CITY, OKLAHOMA 73105-3204

This map indicates those roads known to the Department to be open to public travel. Placement of a road on the map has no relationship to maintenance responsibility by any level of government.