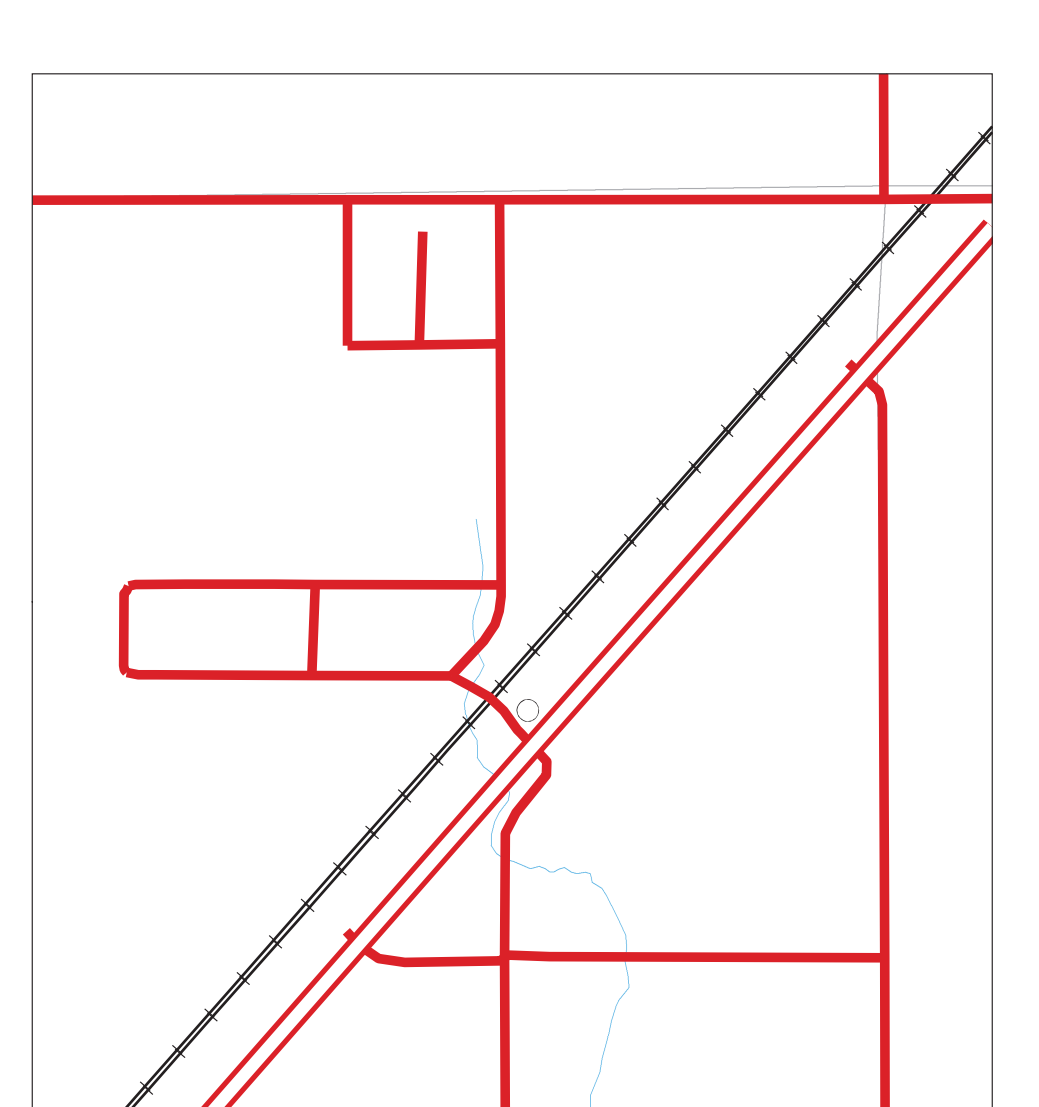
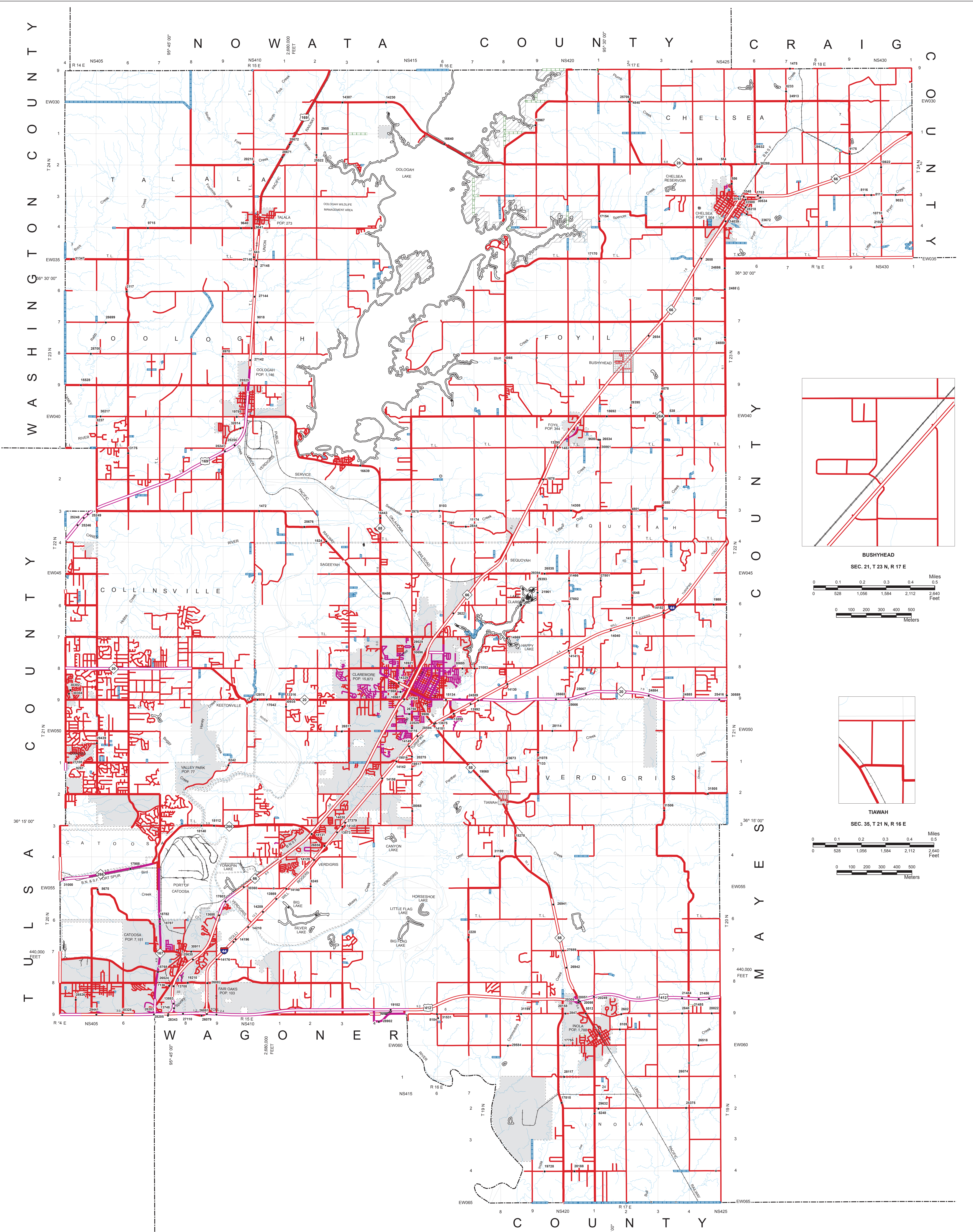
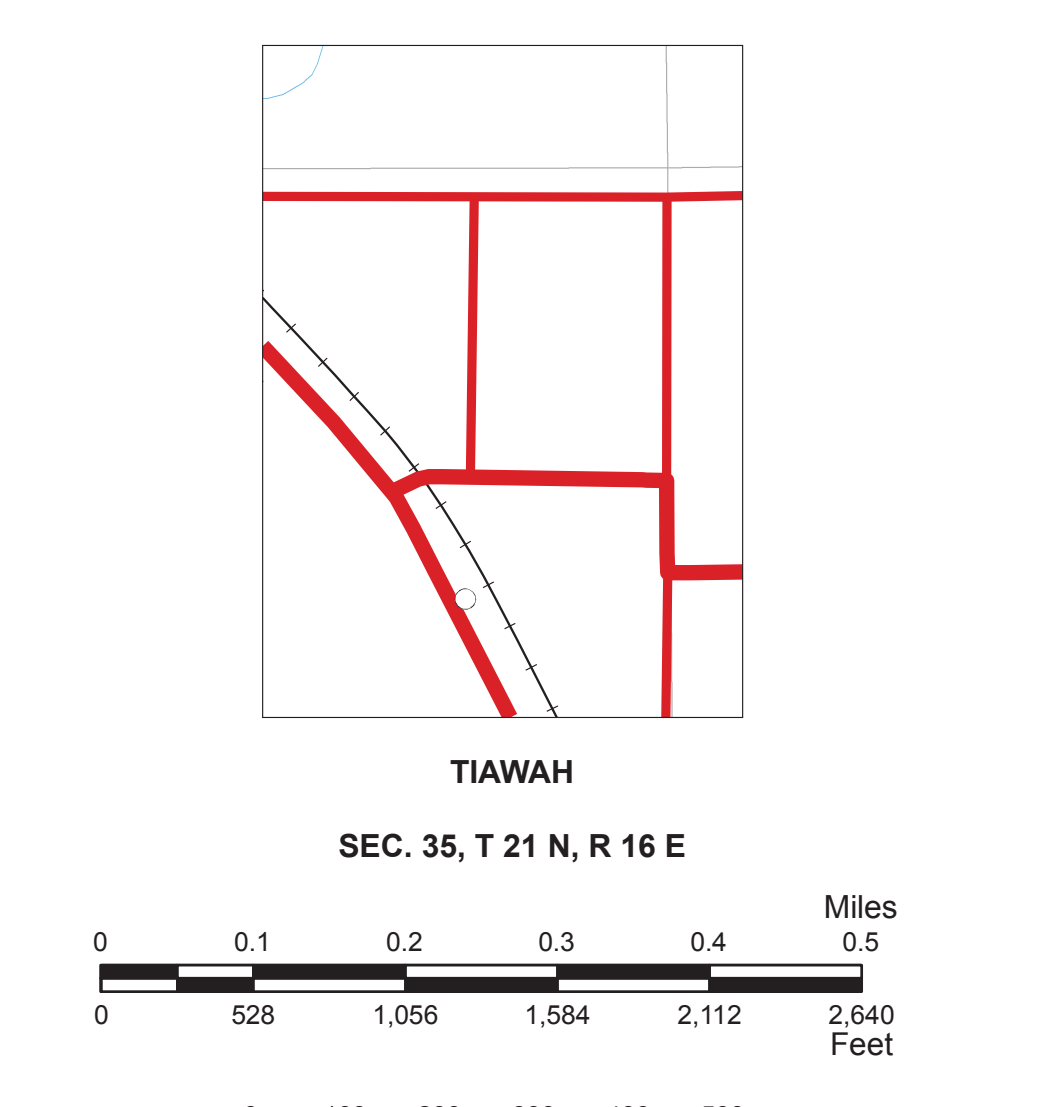


Copies of this map are available for public use at a nominal cost.  
 Address: OKLAHOMA DEPARTMENT OF TRANSPORTATION  
 PRINTING SERVICES Phone: (405) 521-2288  
 200 N. E. 24th STREET  
 OKLAHOMA CITY, OKLAHOMA 73105-3204

This map indicates those roads known to the Department to be open to public travel. Placement of a road on the map has no relationship to maintenance responsibility for any level of government.

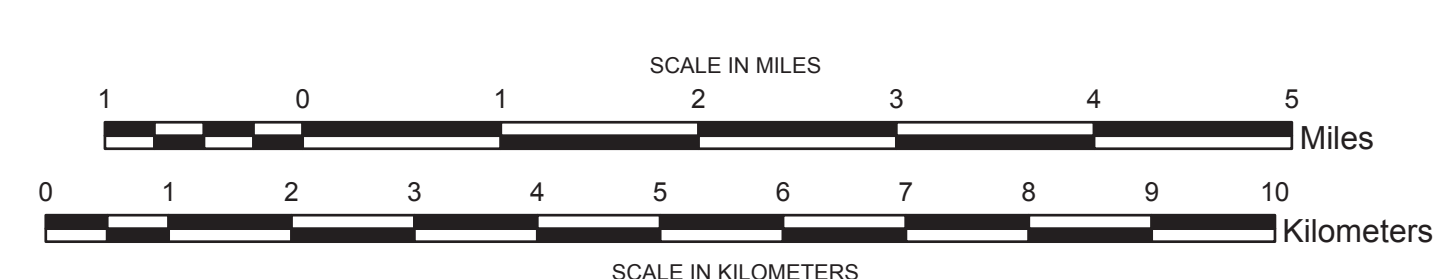
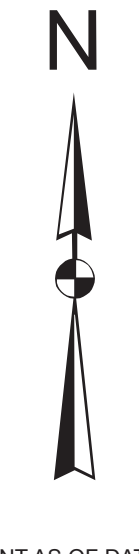
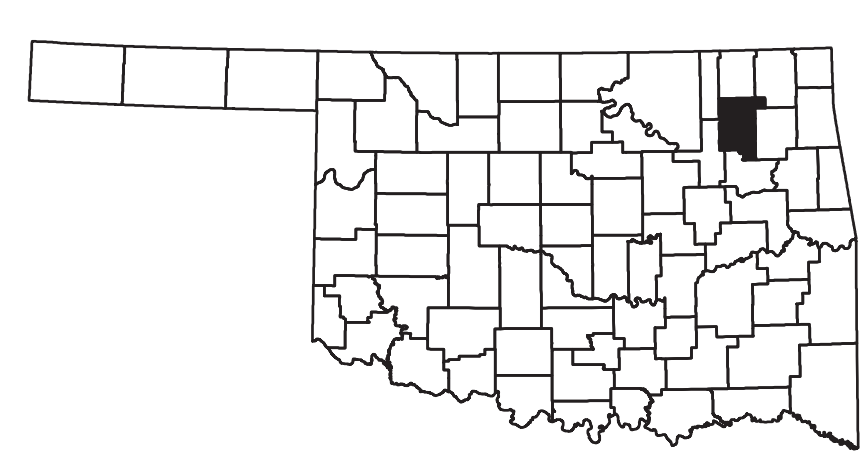


**BUSHYHEAD**  
 SEC. 21, T. 23 N., R. 17 E.



**TIAWAH**  
 SEC. 35, T. 21 N., R. 16 E.

- Legend**
- Interstate Highway
  - US Highway
  - ◇ State Highway
  - Bridge
  - Low Water Crossing
  - Town Center
  - ☀ Mesas
  - ☀ Mountains & Peaks
  - ☾ Lake or Reservoir
  - River or Stream
  - Divided, 4 or more lanes
  - Asphalt
  - Concrete
  - Road Surface Type**
  - Asphalt
  - Concrete
  - Gravel
  - Grade & Drain
  - Unimproved
  - Railroad
  - Section Line
  - Corporate Limits
  - County Line
  - Wildlife Refuge
  - Wildlife Management Area
  - State Park
  - US Military Installation
  - State Line



**GENERAL HIGHWAY MAP  
 ROGERS COUNTY  
 OKLAHOMA**

PREPARED BY THE  
 OKLAHOMA DEPARTMENT OF TRANSPORTATION  
 STRATEGIC ASSET AND PERFORMANCE  
 MANAGEMENT DIVISION

IN COOPERATION WITH THE  
 U.S. DEPARTMENT OF TRANSPORTATION  
 FEDERAL HIGHWAY ADMINISTRATION

SCALE IN MILES  
 SCALE IN KILOMETERS

LAMBERT CONFORMAL CONIC PROJECTION U.S. & GEODETIC SURVEY DATA  
 20000 FOOT GRID, OKLAHOMA PLANE COORDINATE SYSTEM NORTH PROJECTION ZONE  
 POPULATION FIGURES BASED ON 2010 U.S. CENSUS  
 CO. POP. 89,905

ALL DATA CURRENT AS OF DATE LISTED BELOW  
 August 27, 2019