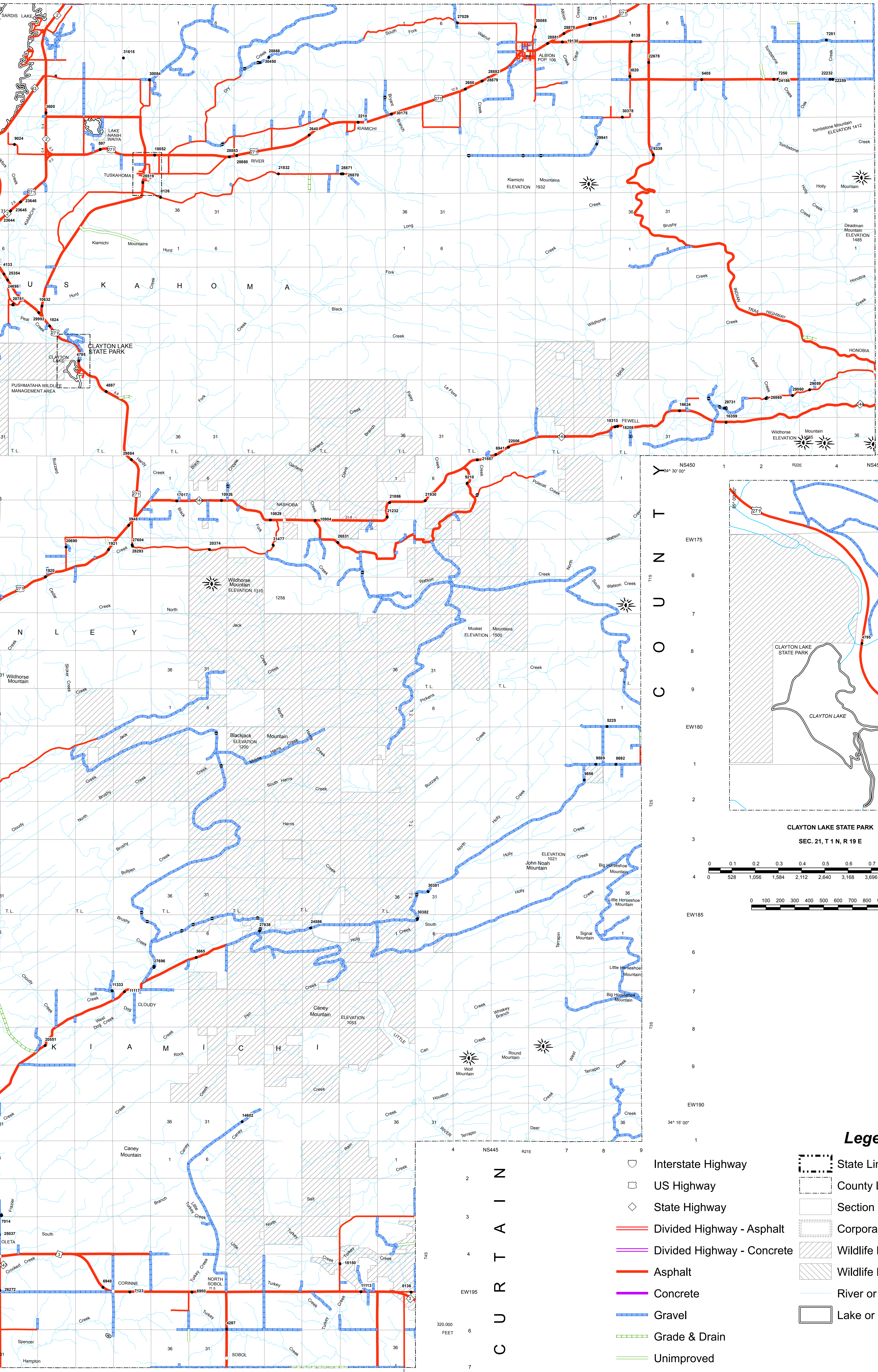


Copies of this map are available for public use at a nominal cost. Address: OKLAHOMA DEPARTMENT OF TRANSPORTATION, PRINTING SERVICES, PHOENIX (405) 521-2266, 200 N. E. 24th STREET, OKLAHOMA CITY, OKLAHOMA 73105-3204.
 This map indicates those roads known to the Department to be open to public travel. Placement of a road on the map has no relationship to maintenance responsibility by any level of government.
 © COPYRIGHT 2018, PRINTED ON STATE EXPENSE, NOT FOR RESALE, GENERAL HIGHWAY MAP, PUSHMATAHA COUNTY, OKLAHOMA, COMPUTER GENERATED, 64

L A T I M E R C O U N T Y L E F L O R E



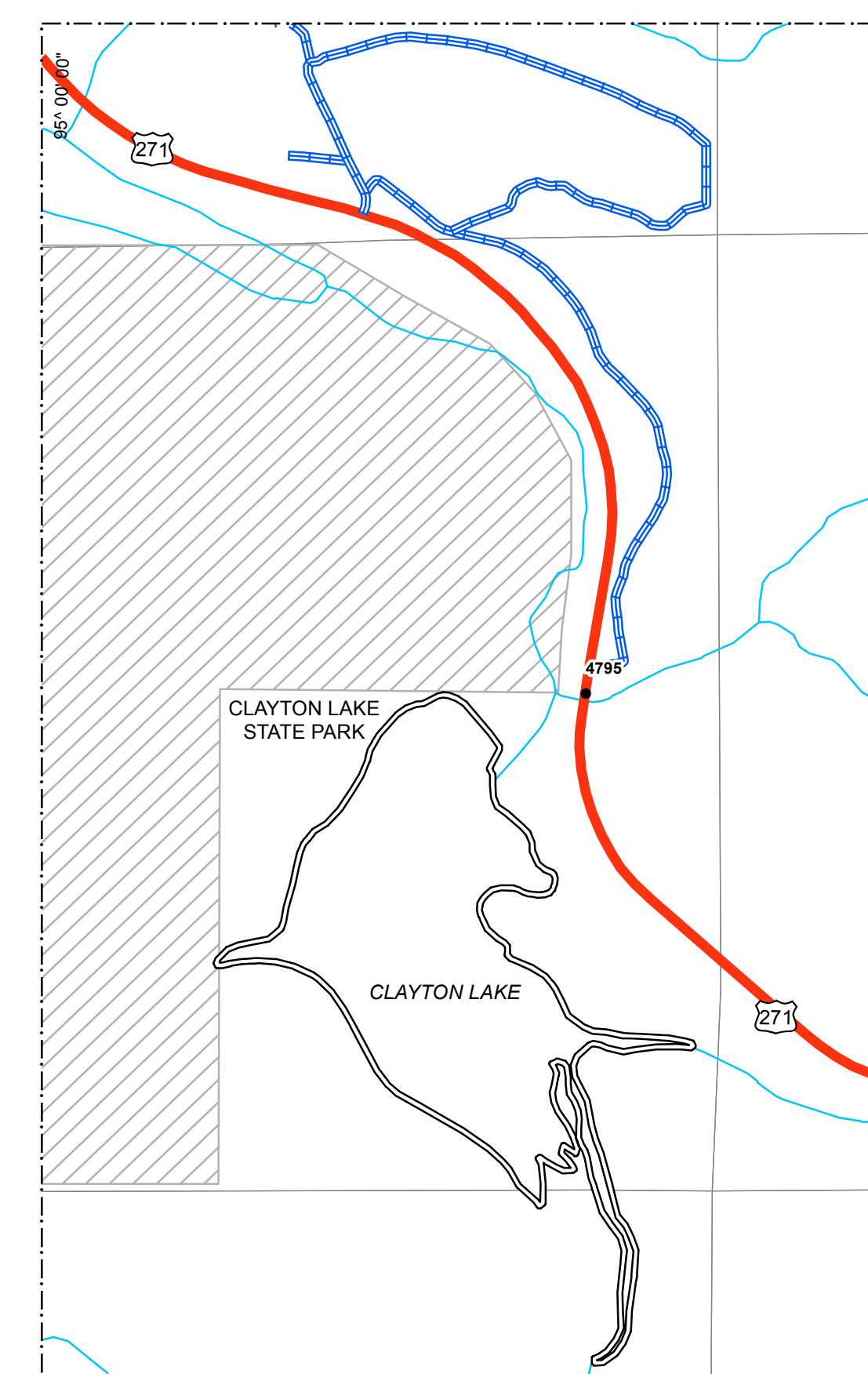
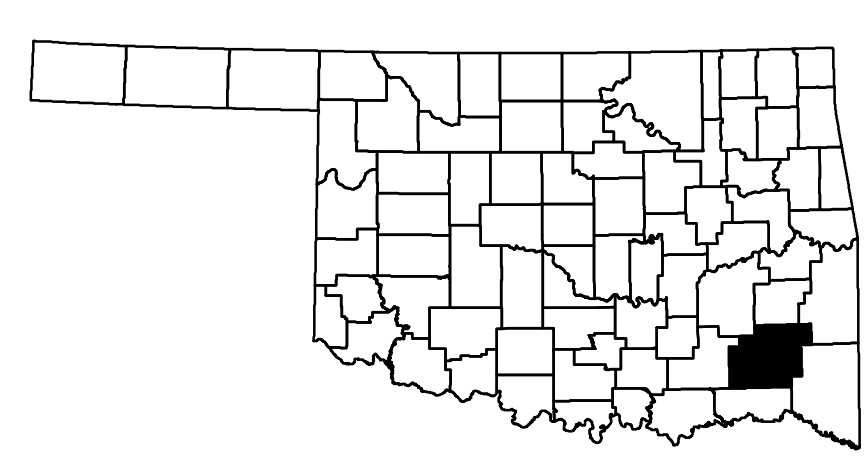
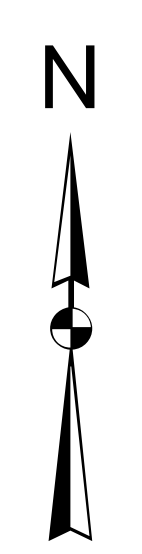
T U S K A H O M A C O U N T Y

T U S K A H O M A C O U N T Y

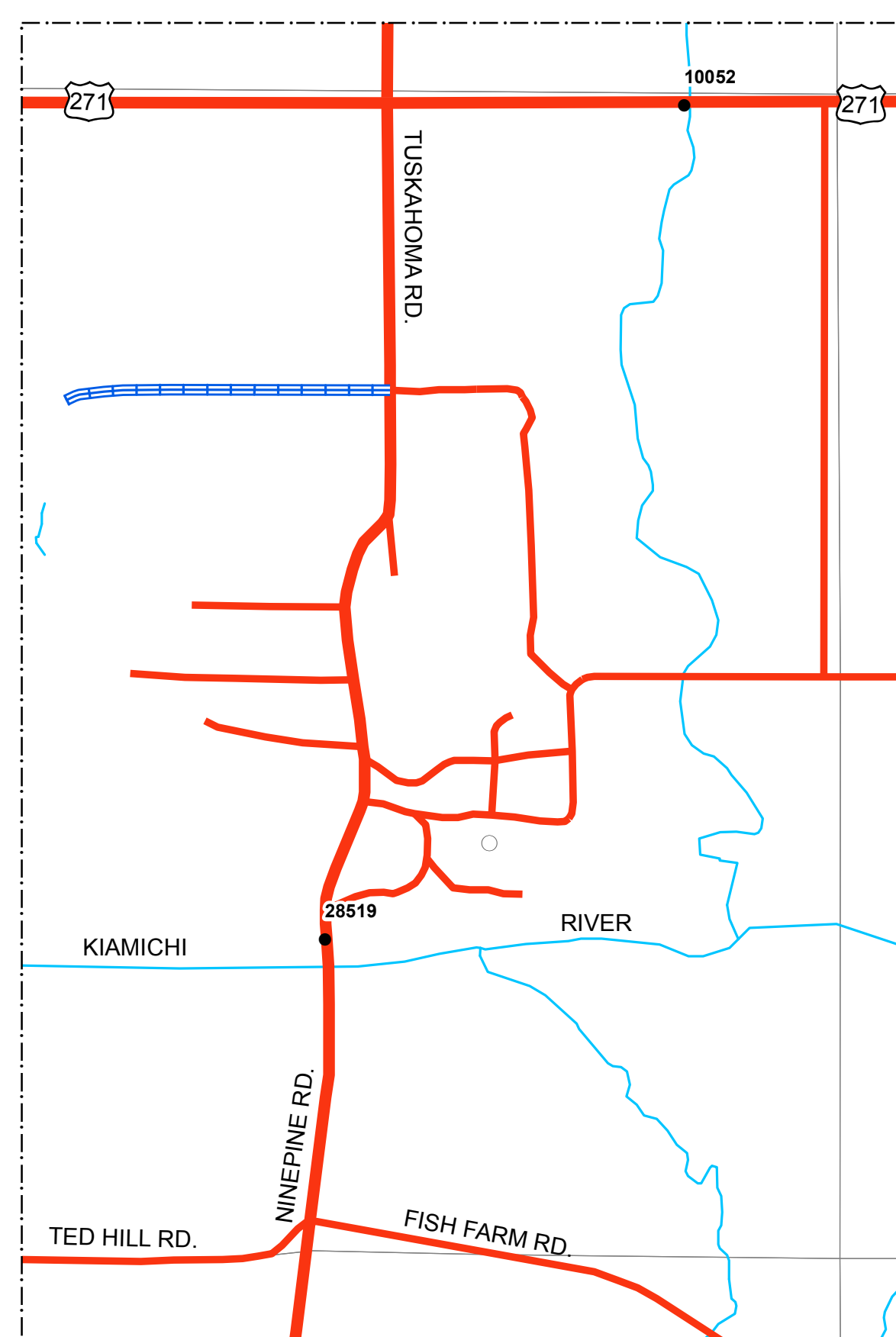
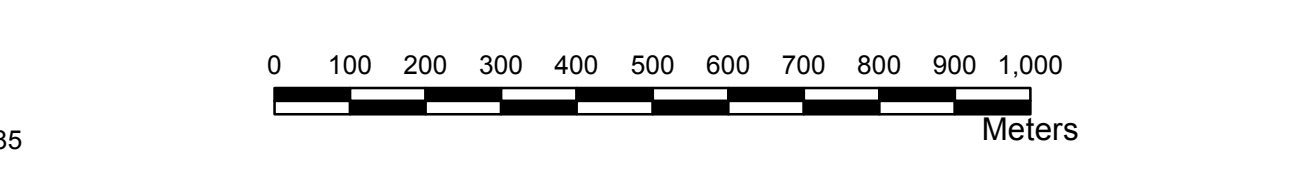
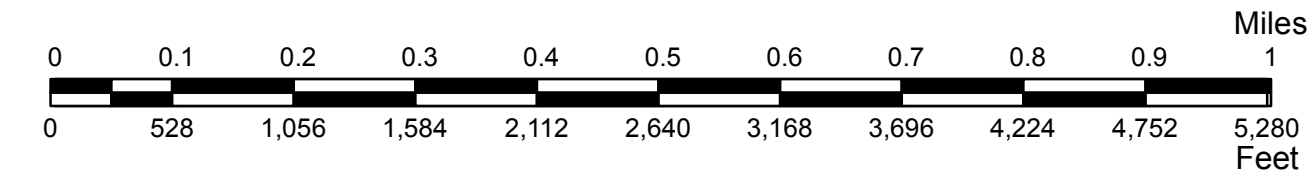
M A T A H A C O U N T Y

C H O C T A W C O U N T Y

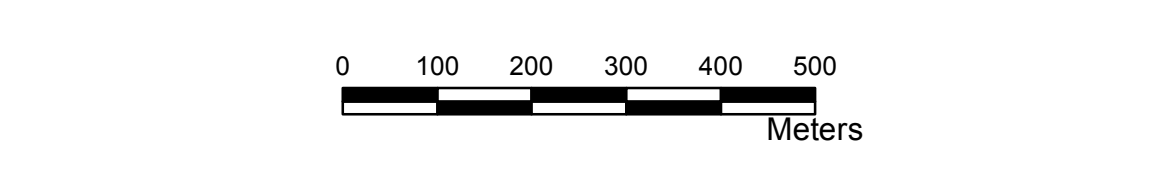
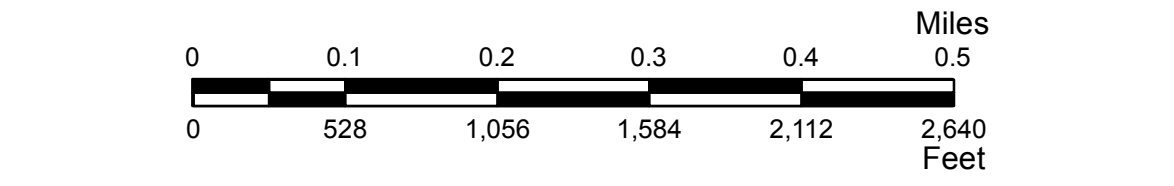
M A T A H A C O U N T Y



CLAYTON LAKE STATE PARK
SEC. 21, T 1 N, R 19 E



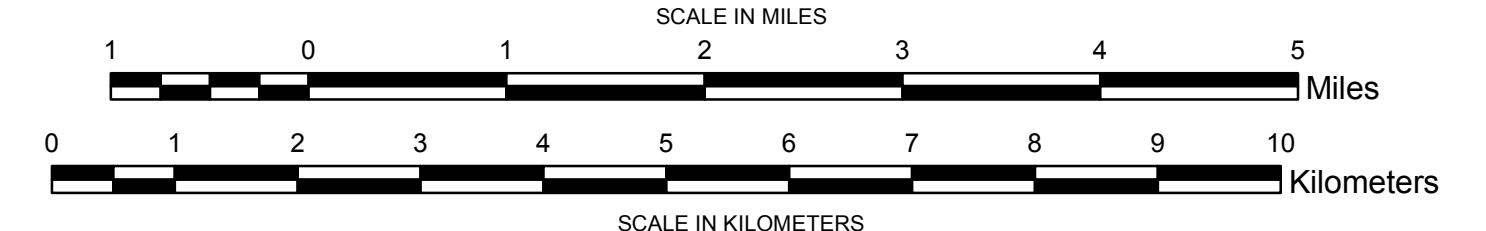
TUSKAHOMA
SEC. 26, T 2 N, R 19 E



- Legend**
- Interstate Highway
 - US Highway
 - State Highway
 - Divided Highway - Asphalt
 - Divided Highway - Concrete
 - Asphalt
 - Concrete
 - Gravel
 - Grade & Drain
 - Unimproved
 - Railroad
 - State Line
 - County Line
 - Section Line
 - Corporate Limit
 - Wildlife Management Area
 - Wildlife Refuge
 - River or Stream
 - Lake or Reservoir
 - Bridges
 - Low Water Crossing
 - Natural Elevation Point
 - Natural Elevation Point

**GENERAL HIGHWAY MAP
PUSHMATAHA COUNTY
OKLAHOMA**

PREPARED BY THE
OKLAHOMA DEPARTMENT OF TRANSPORTATION
STRATEGIC ASSET AND PERFORMANCE
MANAGEMENT DIVISION
IN COOPERATION WITH THE
U.S. DEPARTMENT OF TRANSPORTATION
FEDERAL HIGHWAY ADMINISTRATION



LAMBERT CONFORMAL CONIC PROJECTION U.S. & GEODETIC SURVEY DATA.
20,000 FOOT GRID; OKLAHOMA PLANE COORDINATE SYSTEM NORTH PROJECTION ZONE.
POPULATION FIGURES BASED ON 2010 U.S. CENSUS.
CD, POP. 11,572

This map indicates those roads known to the Department to be open to public travel. Placement of a road on the map has no relationship to maintenance responsibility by any level of government.

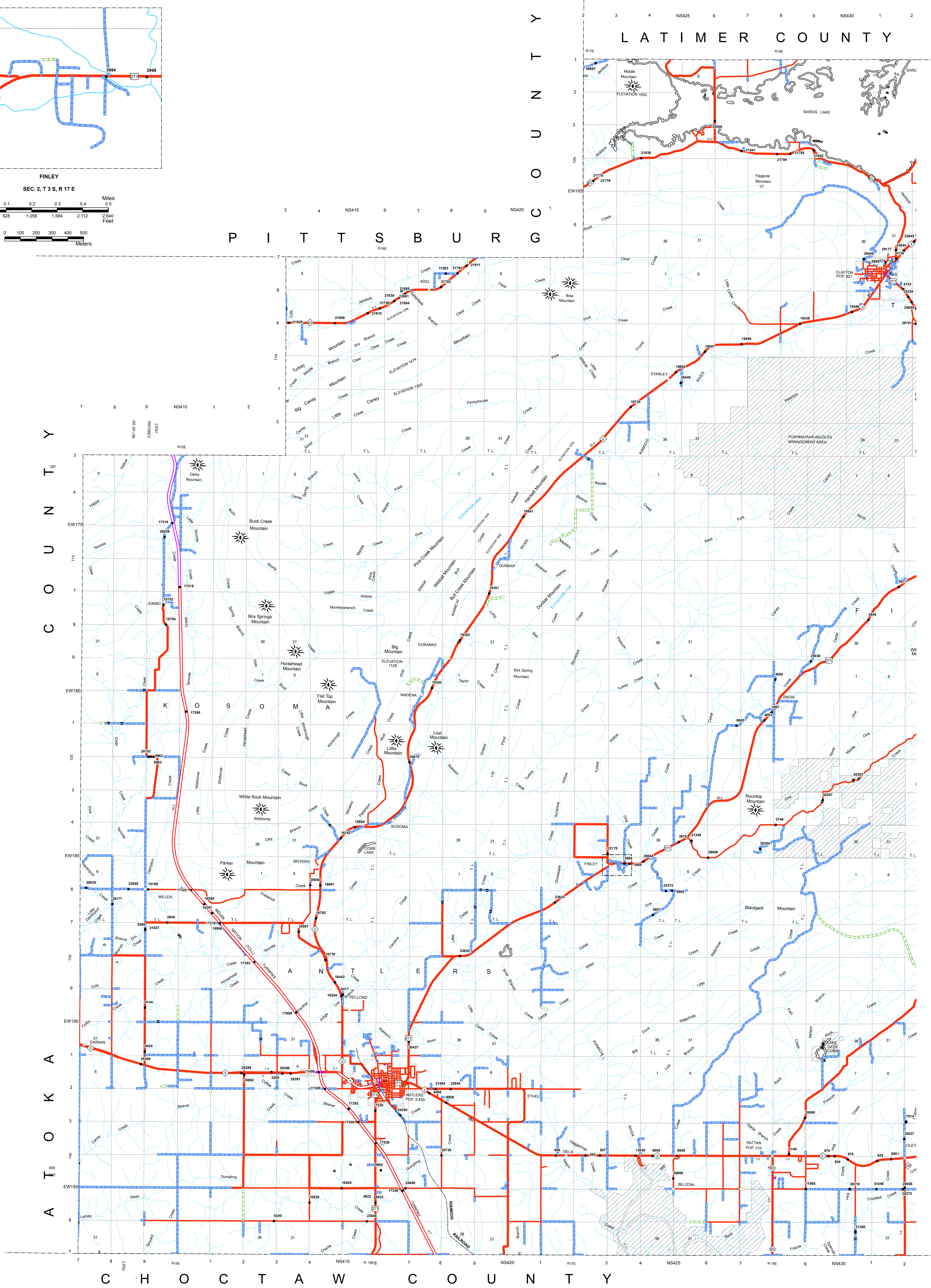
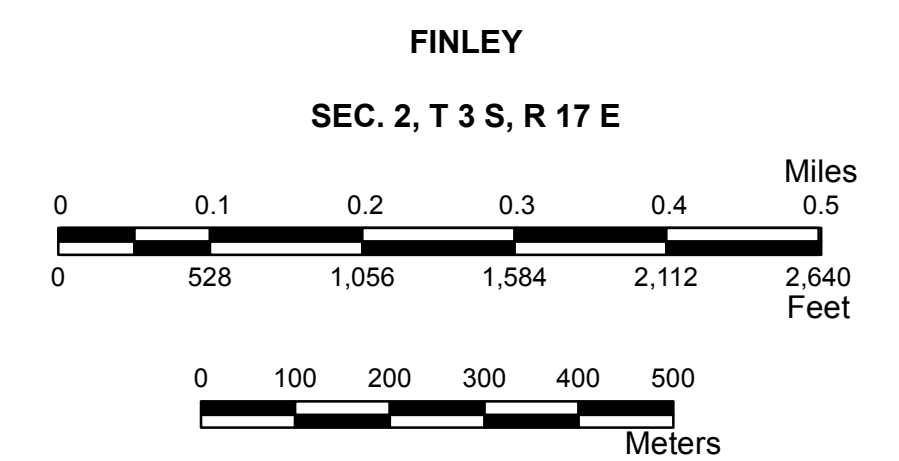
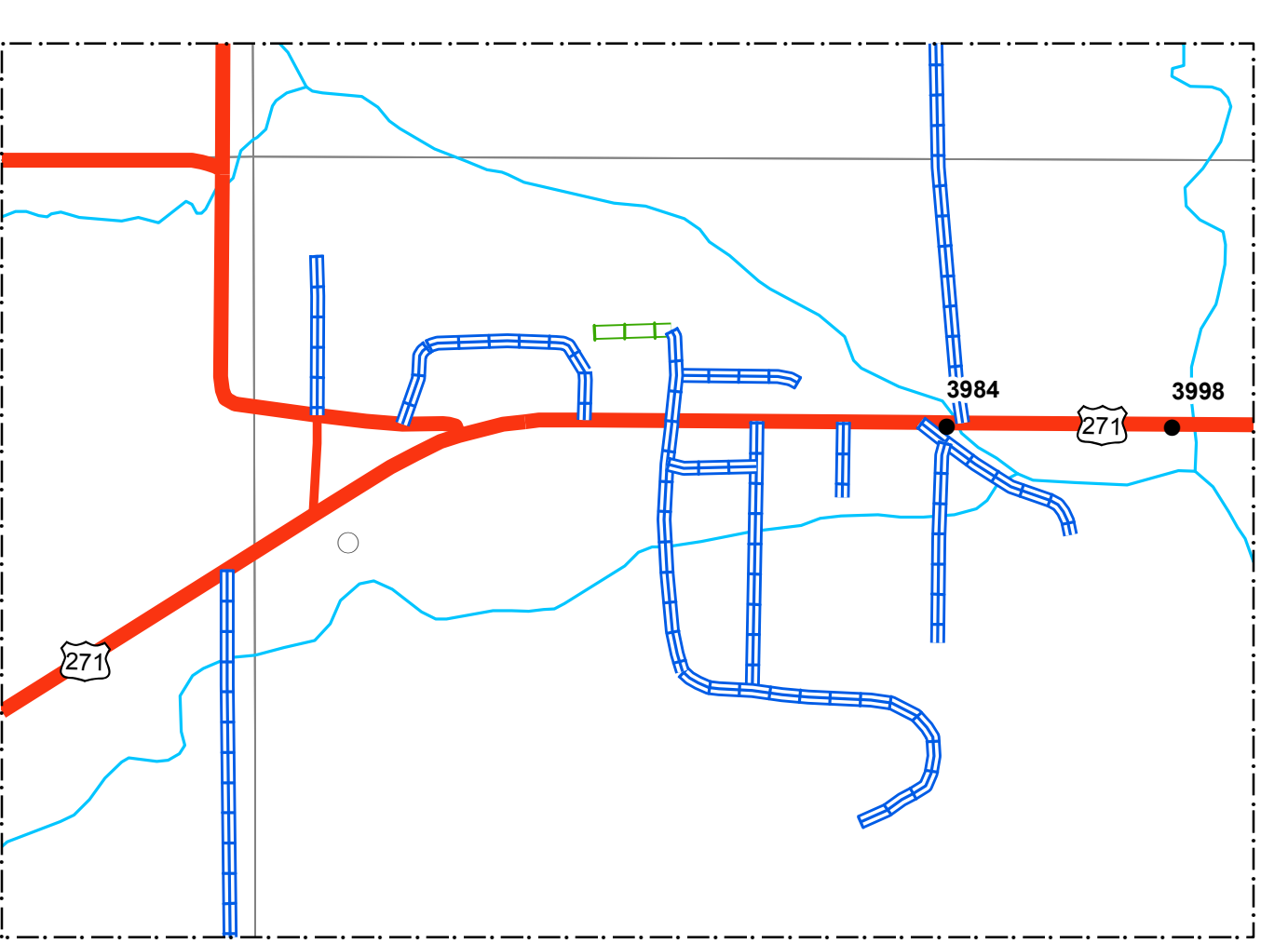
© COPYRIGHT 2018
 PRINTING STATE EXPENSE

NOT FOR RESALE

GENERAL HIGHWAY MAP
 ALL RIGHTS RESERVED

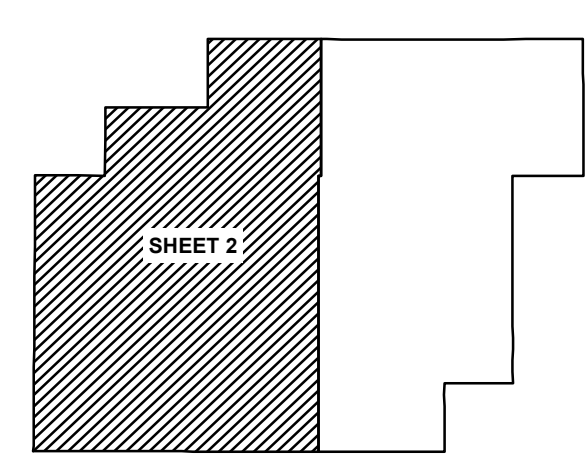
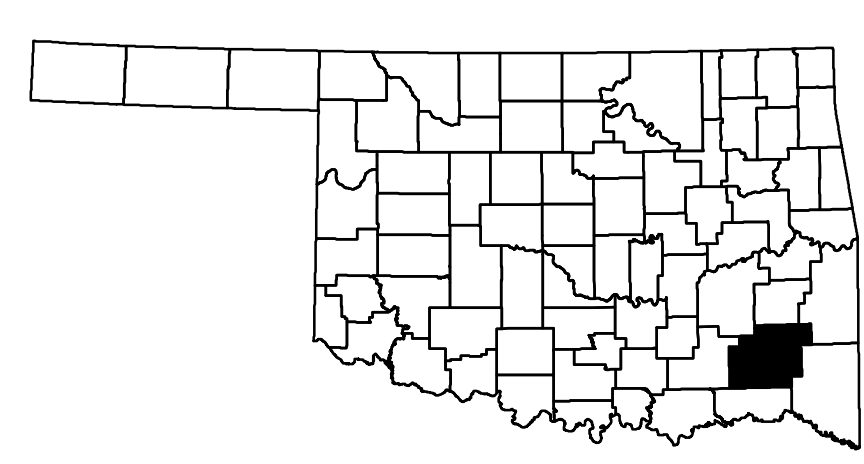
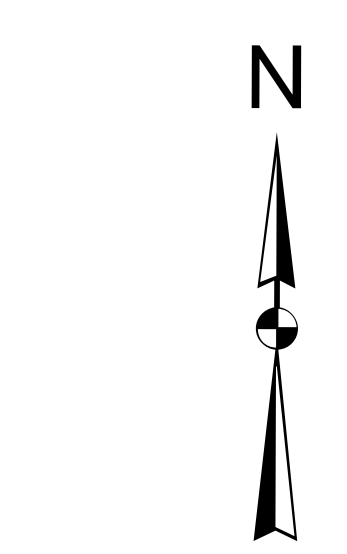
PUSHMATAHA COUNTY
 OKLAHOMA

COMPUTER GENERATED
 64



Legend

- Interstate Highway
- US Highway
- State Highway
- Divided Highway - Asphalt
- Divided Highway - Concrete
- Asphalt
- Concrete
- Gravel
- Grade & Drain
- Unimproved
- Railroad
- State Line
- County Line
- Section Line
- Corporate Limit
- Wildlife Management Area
- Wildlife Refuge
- River or Stream
- Lake or Reservoir
- Bridges
- Low Water Crossing
- Natural Elevation Point
- Natural Elevation Point

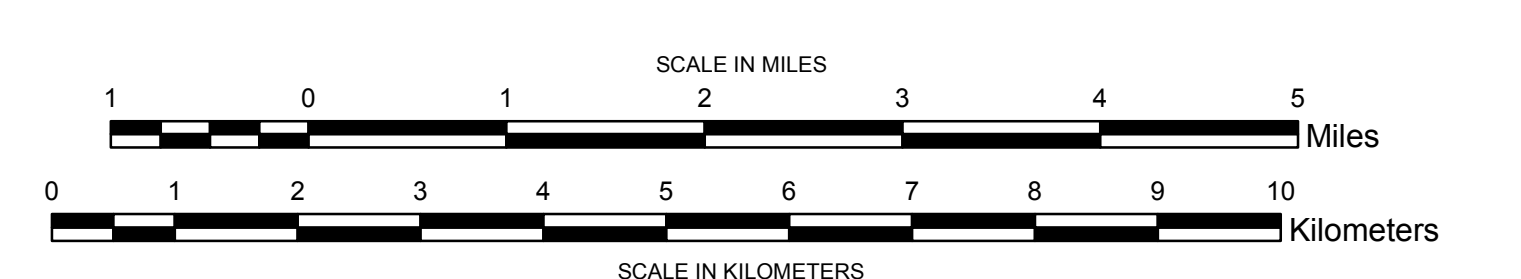


ALL DATA CURRENT AS OF DATE LISTED BELOW
 October 2, 2018

**GENERAL HIGHWAY MAP
 PUSHMATAHA COUNTY
 OKLAHOMA**

PREPARED BY THE
OKLAHOMA DEPARTMENT OF TRANSPORTATION
 STRATEGIC ASSET AND PERFORMANCE
 MANAGEMENT DIVISION

IN COOPERATION WITH THE
 U.S. DEPARTMENT OF TRANSPORTATION
 FEDERAL HIGHWAY ADMINISTRATION



LAMBERT CONFORMAL CONIC PROJECTION U.S. & GEODETIC SURVEY DATA
 20,000 FOOT GRID; OKLAHOMA PLANE COORDINATE SYSTEM NORTH PROJECTION ZONE
 POPULATION FIGURES BASED ON 2010 U.S. CENSUS
 CD, POP. 11,572