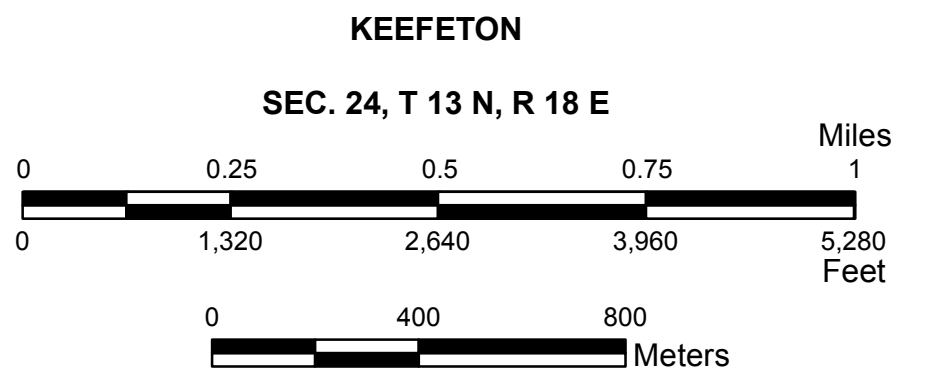
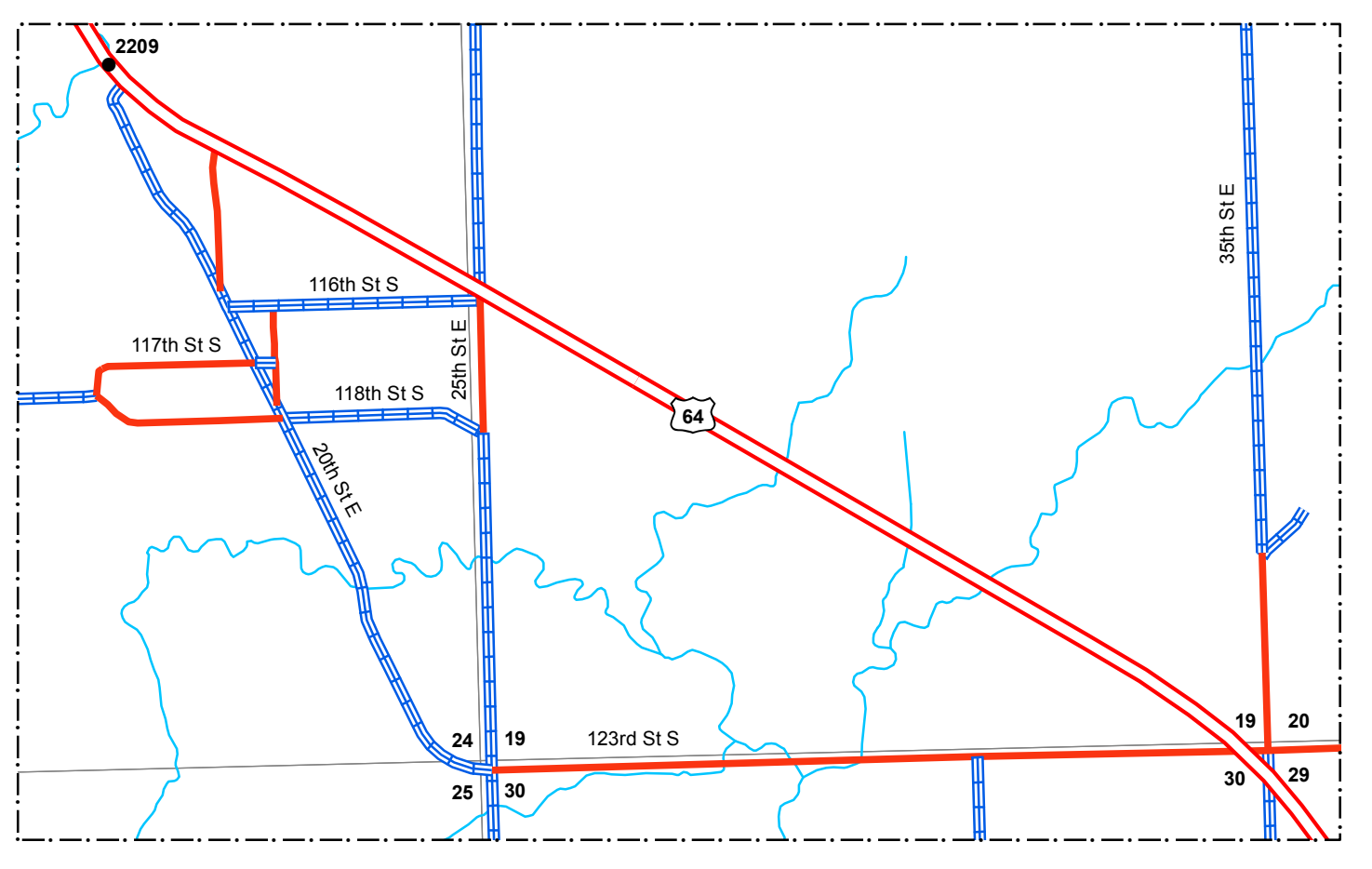
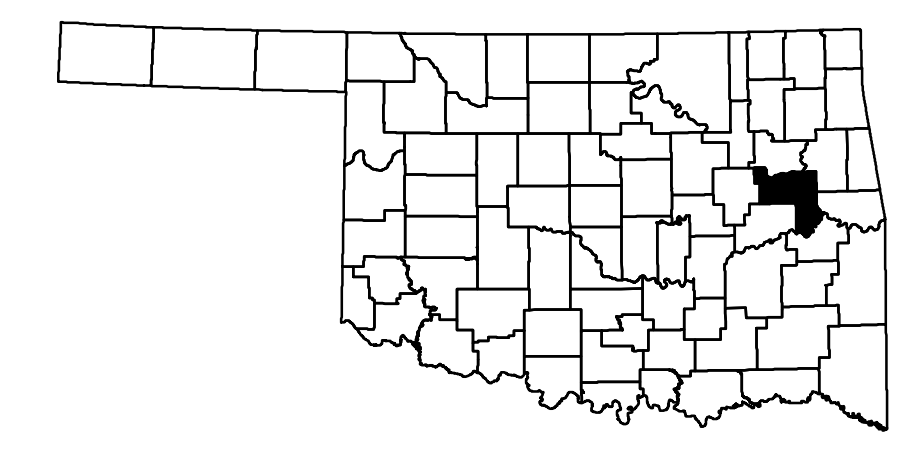


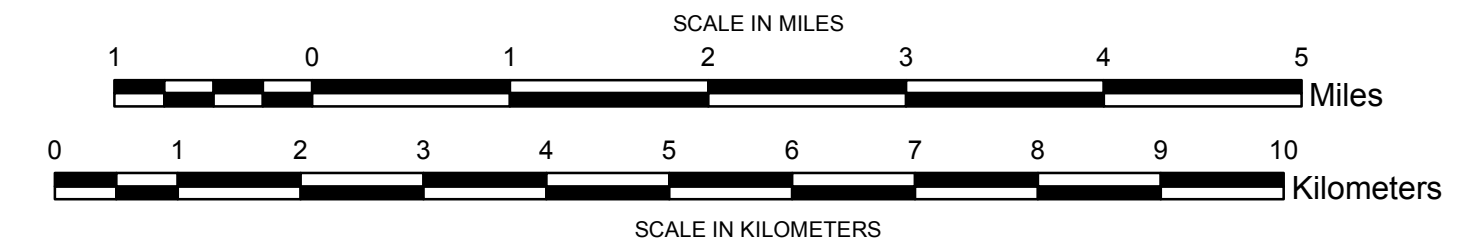
- Legend**
- ⬢ Interstate Highway
 - ⬢ US Highway
 - ⬢ State Highway
 - Divided Highway - Asphalt
 - Divided Highway - Concrete
 - Asphalt
 - Concrete
 - Gravel
 - Grade & Drain
 - Unimproved
 - Railroad
 - ⬢ State Line
 - ⬢ County Line
 - ⬢ Section Line
 - ⬢ Corporate Limit
 - ⬢ Wildlife Management Area
 - ⬢ Wildlife Refuge
 - River or Stream
 - ⬢ Lake or Reservoir
 - Bridges
 - Low Water Crossing
 - ⊙ Natural Elevation Point
 - ⊙ Natural Elevation Point



**GENERAL HIGHWAY MAP
MUSKOGEE COUNTY
OKLAHOMA**

PREPARED BY THE
OKLAHOMA DEPARTMENT OF TRANSPORTATION
STRATEGIC ASSET AND PERFORMANCE
MANAGEMENT DIVISION

IN COOPERATION WITH THE
U.S. DEPARTMENT OF TRANSPORTATION
FEDERAL HIGHWAY ADMINISTRATION

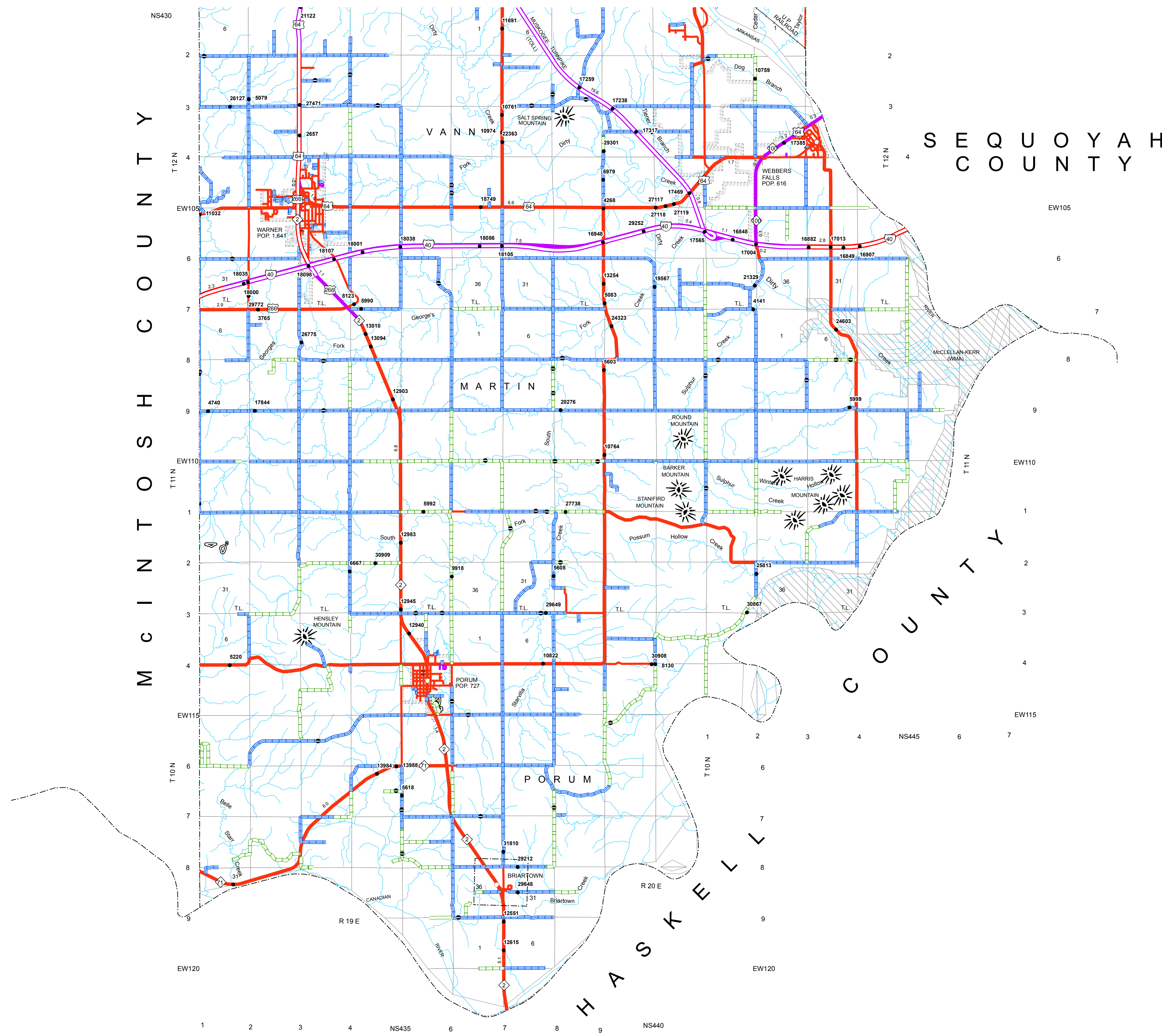


LAMBERT CONFORMAL CONIC PROJECTION U.S. & GEODETIC SURVEY DATA
2000 FOOT GRID, OKLAHOMA PLANE COORDINATE SYSTEM NORTH PROJECTION ZONE
POPULATION FIGURES BASED ON 2010 U.S. CENSUS
CD, POP. 70,969

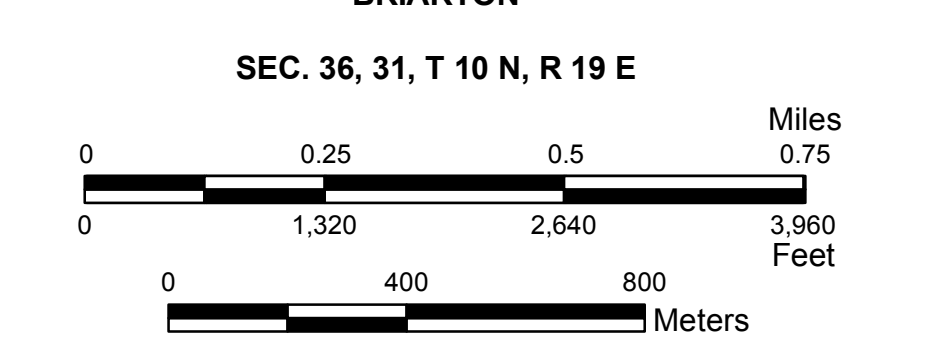
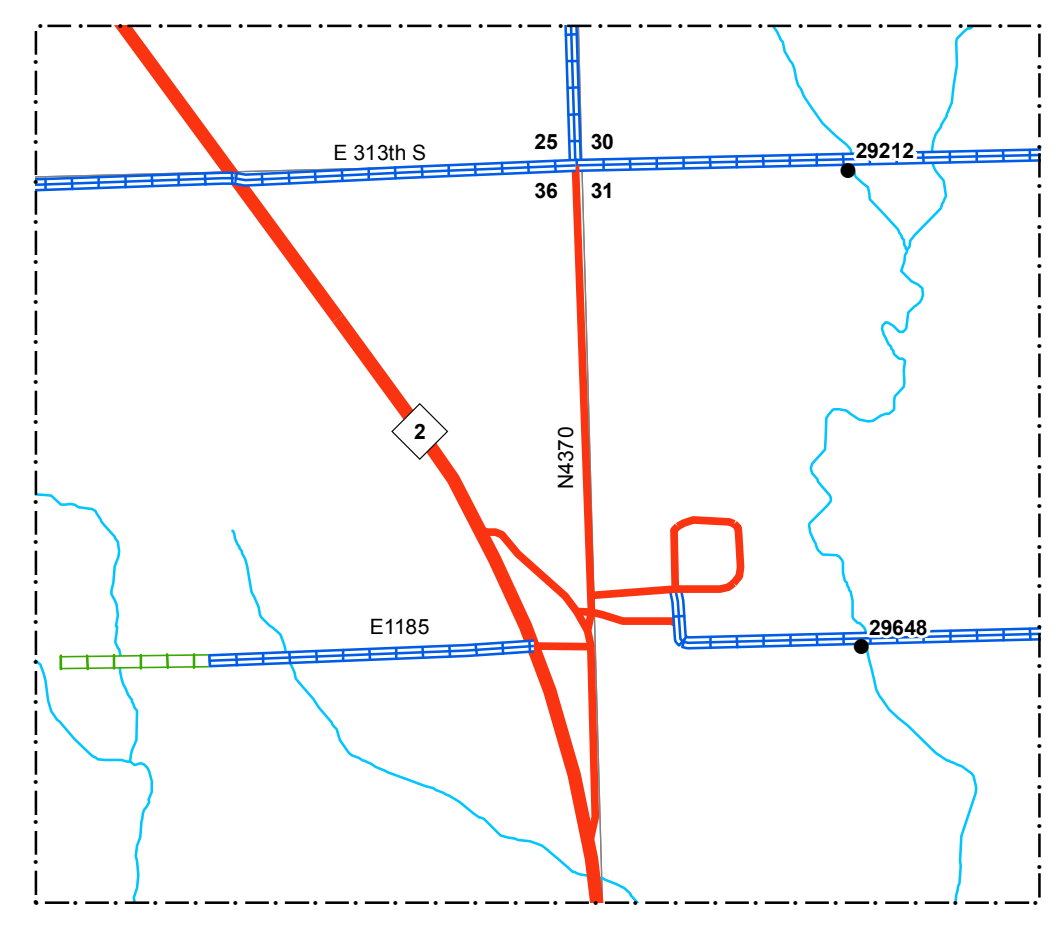
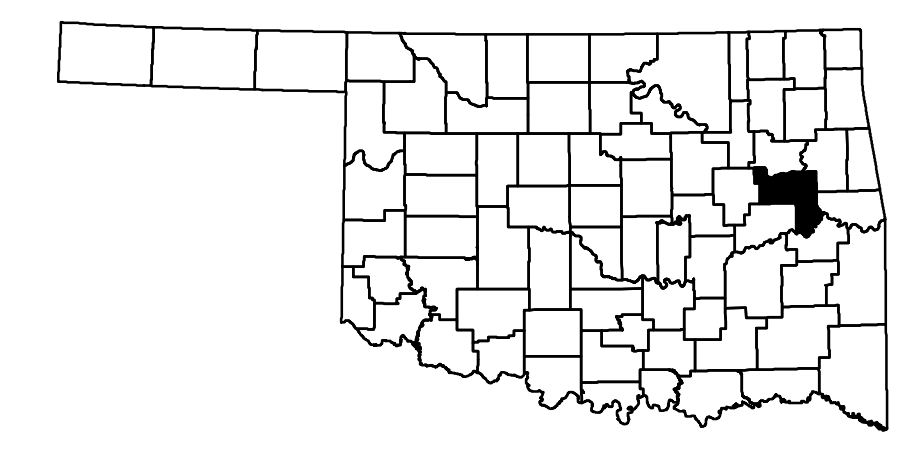
Copies of this map are available for public use at nominal cost.
Address:
OKLAHOMA DEPARTMENT OF TRANSPORTATION
PRINTING SERVICES Phone (405) 521-2586
200 N.E. 21st STREET
OKLAHOMA CITY, OKLAHOMA 73105-3204

This map indicates those roads known to the Department to be open to public travel. Placement of a road on the map has no relationship to maintenance responsibility by any level of government.

ALL DATA CURRENT AS OF DATE LISTED BELOW
October 2, 2018
ALL RIGHTS RESERVED
COMPUTER GENERATED

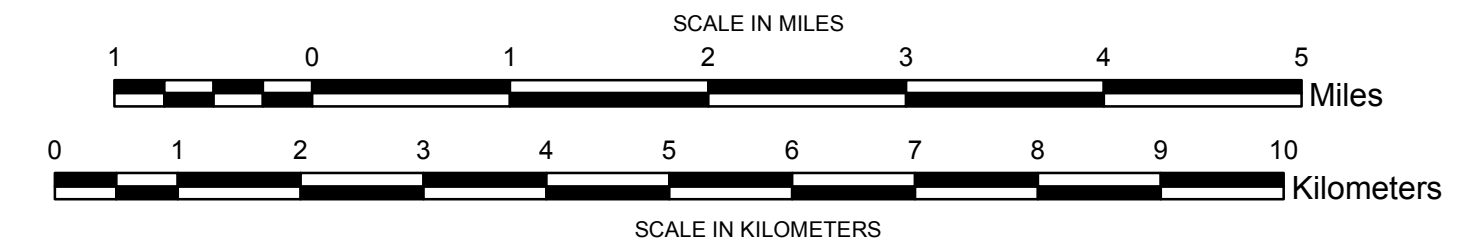


- Legend**
- Interstate Highway
 - US Highway
 - State Highway
 - Divided Highway - Asphalt
 - Divided Highway - Concrete
 - Asphalt
 - Concrete
 - Gravel
 - Grade & Drain
 - Unimproved
 - Railroad
 - State Line
 - County Line
 - Section Line
 - Corporate Limit
 - Wildlife Management Area
 - Wildlife Refuge
 - River or Stream
 - Lake or Reservoir
 - Bridges
 - Low Water Crossing
 - Natural Elevation Point
 - Natural Elevation Point



**GENERAL HIGHWAY MAP
MUSKOGEE COUNTY
OKLAHOMA**

PREPARED BY THE
OKLAHOMA DEPARTMENT OF TRANSPORTATION
STRATEGIC ASSET AND PERFORMANCE
MANAGEMENT DIVISION
IN COOPERATION WITH THE
U.S. DEPARTMENT OF TRANSPORTATION
FEDERAL HIGHWAY ADMINISTRATION



ALL DATA CURRENT AS OF DATE LISTED BELOW
October 2, 2018

ALL RIGHTS RESERVED

COMPUTER GENERATED

Copies of this map are available for public use at nominal cost.
Address:
OKLAHOMA DEPARTMENT OF TRANSPORTATION
PRINTING SERVICES Phone (405) 521-2586
200 N.E. 21st STREET
OKLAHOMA CITY, OKLAHOMA 73105-3204

This map indicates those roads known to the Department to be open to public travel. Placement of a road on the map has no relationship to maintenance responsibility by any level of government.

© COPYRIGHT 2018
PRINTED AT STATE EXPENSE

NOT FOR RESALE

GENERAL HIGHWAY MAP MUSKOGEE COUNTY OKLAHOMA