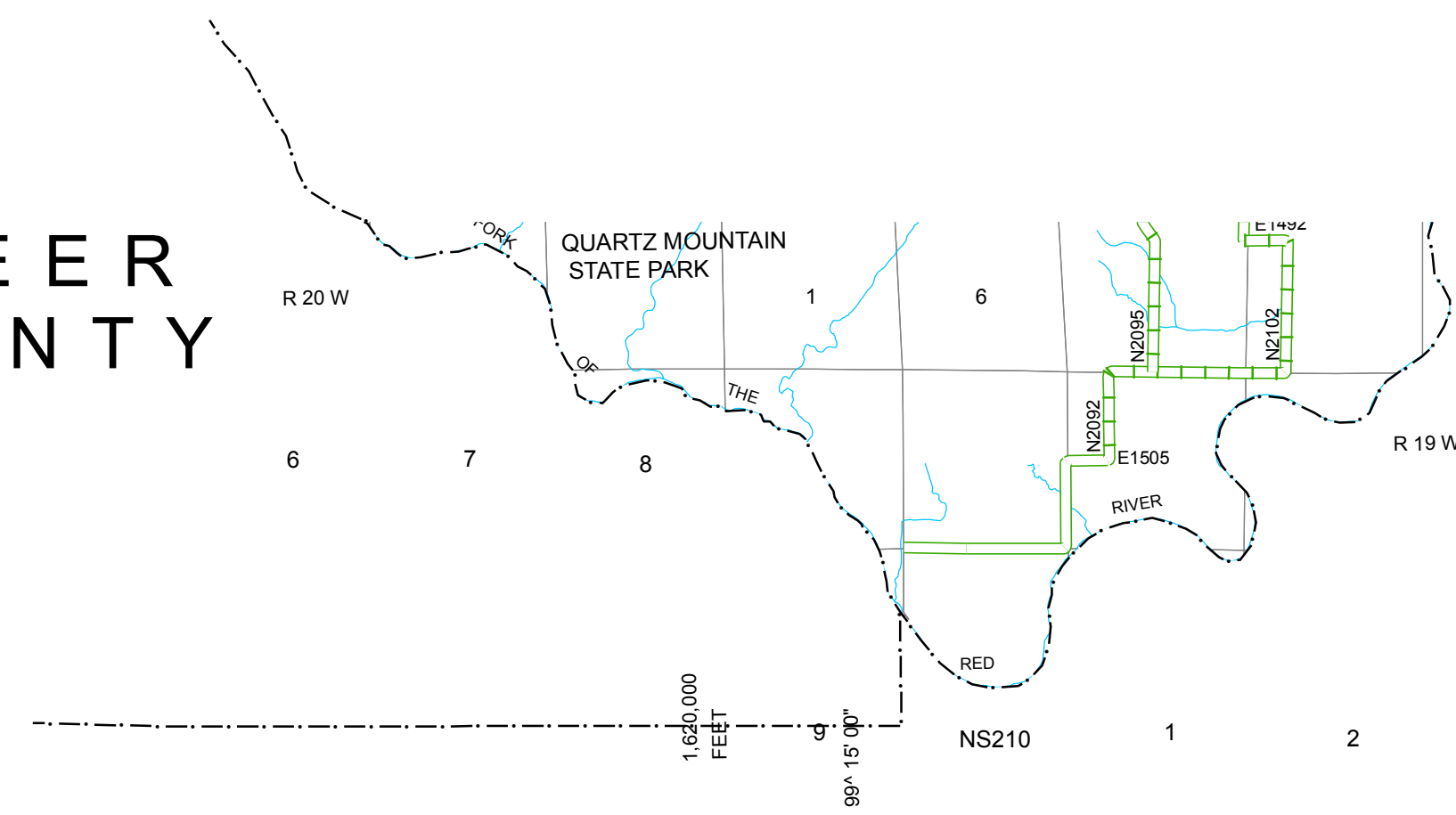
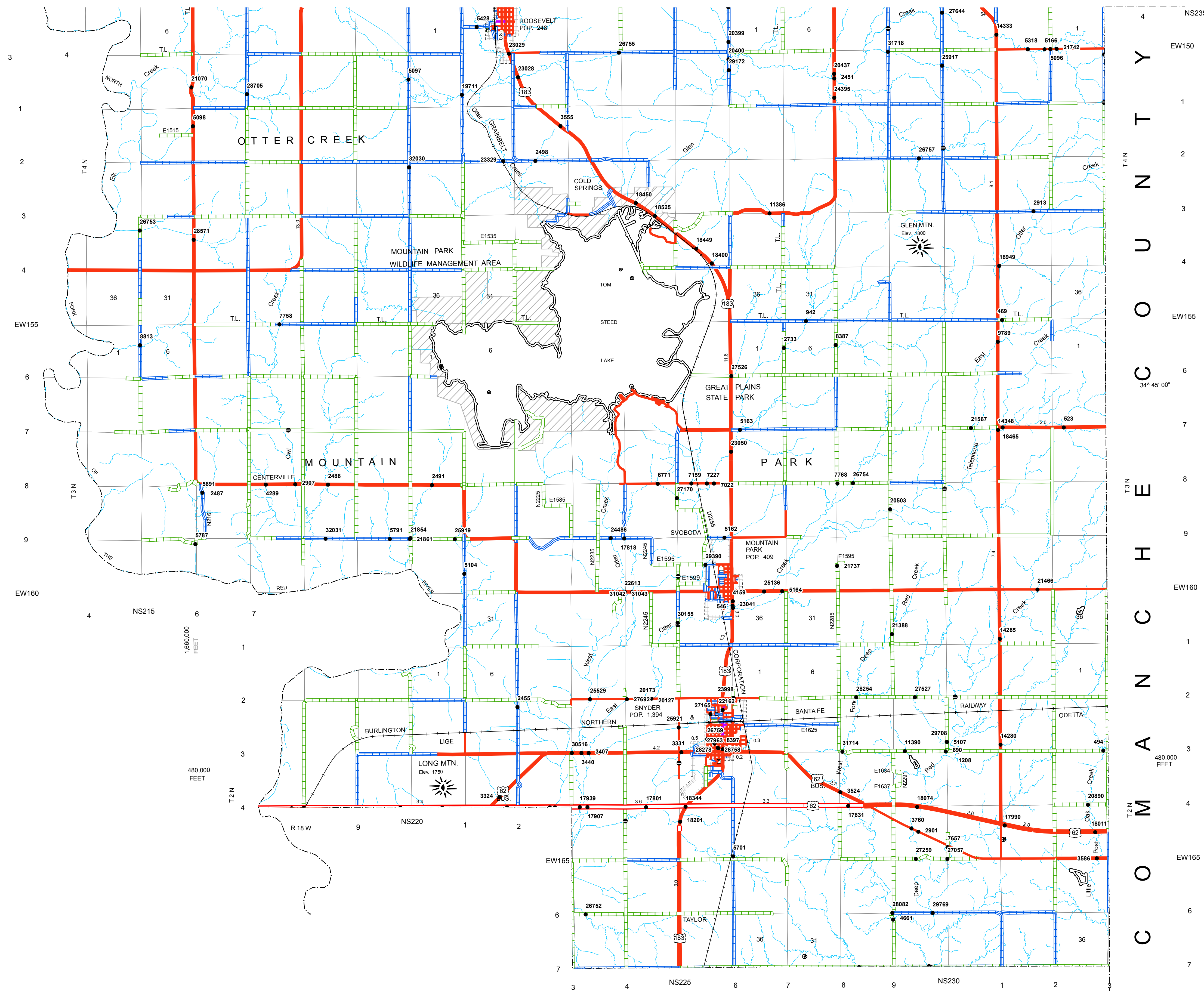


GREER COUNTY



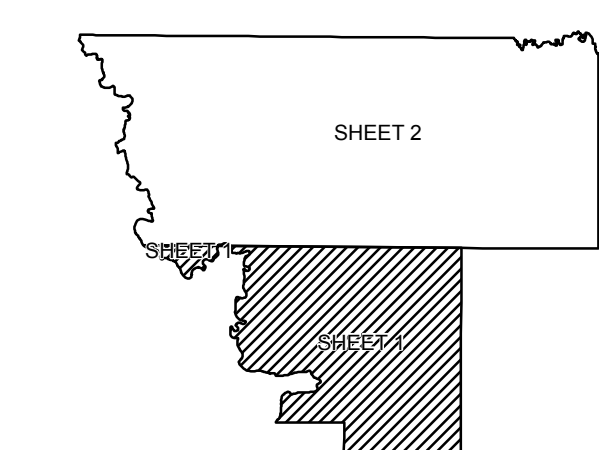
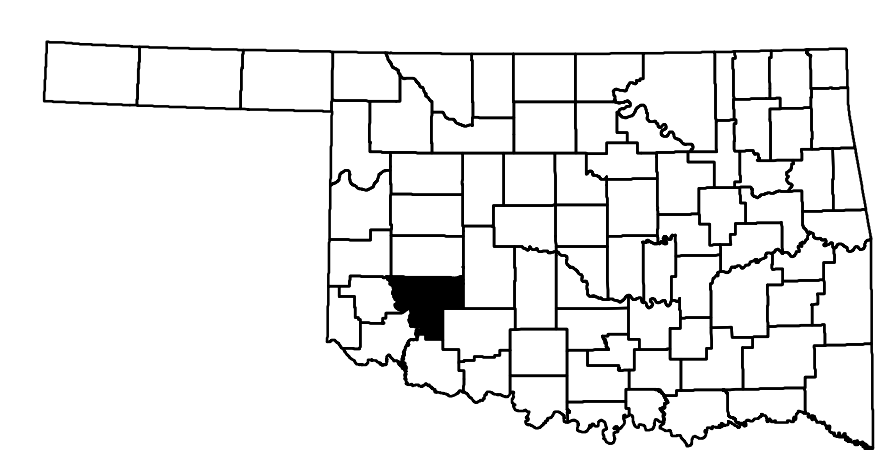
JACKSON COUNTY



TILLMAN COUNTY

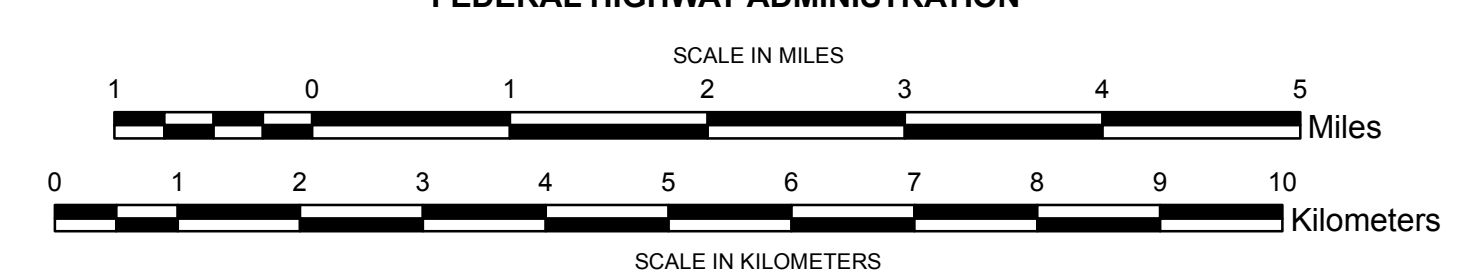
Legend

- Interstate Highway
- US Highway
- State Highway
- Divided Highway - Asphalt
- Divided Highway - Concrete
- Asphalt
- Concrete
- Gravel
- Grade & Drain
- Unimproved
- Railroad
- State Line
- County Line
- Section Line
- Corporate Limit
- Wildlife Management Area
- Wildlife Refuge
- River or Stream
- Lake or Reservoir
- Bridges
- Low Water Crossing
- Natural Elevation Point
- Natural Elevation Point



**GENERAL HIGHWAY MAP
KIOWA COUNTY
OKLAHOMA**

PREPARED BY THE
OKLAHOMA DEPARTMENT OF TRANSPORTATION
STRATEGIC ASSET AND PERFORMANCE
MANAGEMENT DIVISION
IN COOPERATION WITH THE
U.S. DEPARTMENT OF TRANSPORTATION
FEDERAL HIGHWAY ADMINISTRATION



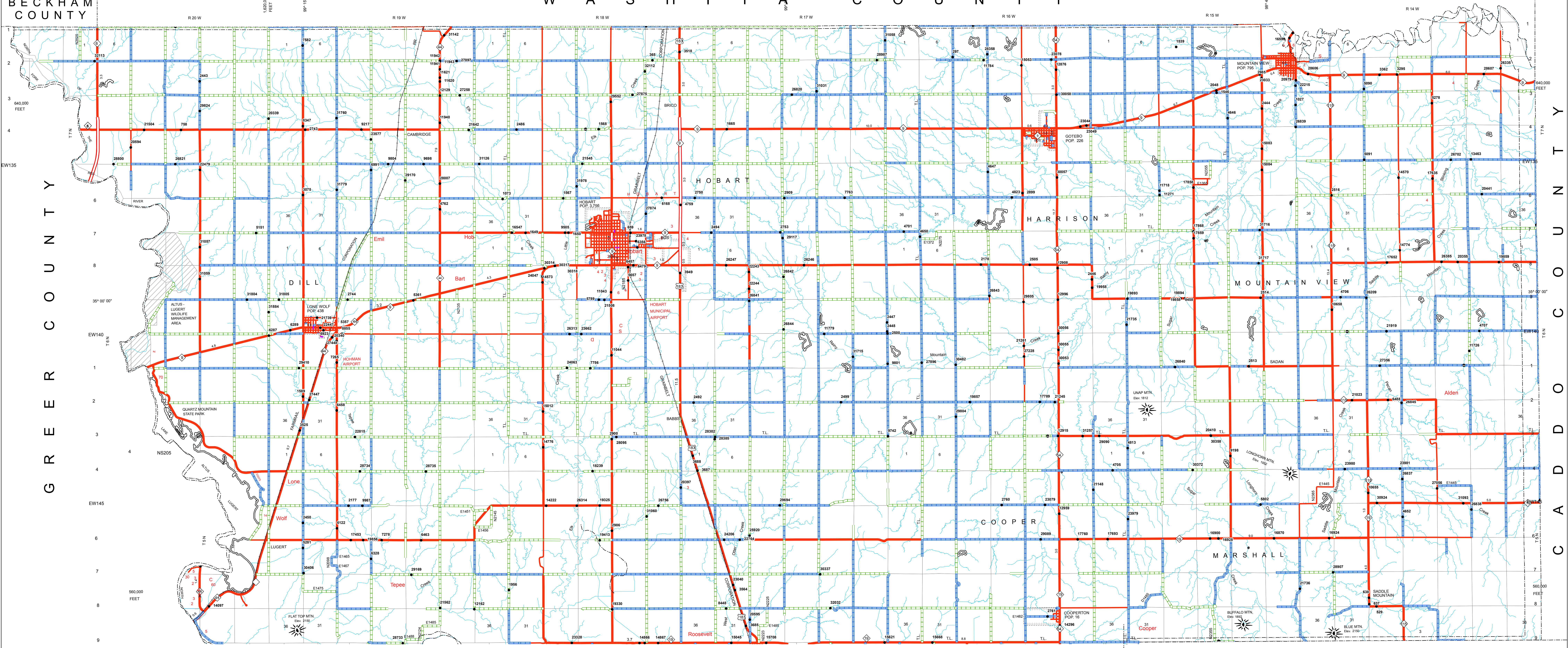
Copies of this map are available for public use at nominal cost.
Address:
OKLAHOMA DEPARTMENT OF TRANSPORTATION
PRINTING SERVICES Phone (405) 521-2586
200 N.E. 21st STREET
OKLAHOMA CITY, OKLAHOMA 73105-3204

This map indicates those roads known to the Department to be open to public travel. Placement of a road on the map has no relationship to maintenance responsibility by any level of government.

ALL DATA CURRENT AS OF DATE LISTED BELOW
October 2, 2018

ALL RIGHTS RESERVED

COMPUTER GENERATED



Legend

- Interstate Highway
- US Highway
- State Highway
- Divided Highway - Asphalt
- Divided Highway - Concrete
- Asphalt
- Concrete
- Gravel
- Grade & Drain
- Unimproved
- Railroad
- State Line
- County Line
- Section Line
- Corporate Limit
- Wildlife Management Area
- Wildlife Refuge
- River or Stream
- Lake or Reservoir
- Bridges
- Low Water Crossing
- Natural Elevation Point
- Natural Elevation Point

**GENERAL HIGHWAY MAP
KIOWA COUNTY
OKLAHOMA**

PREPARED BY THE
OKLAHOMA DEPARTMENT OF TRANSPORTATION
STRATEGIC ASSET AND PERFORMANCE
MANAGEMENT DIVISION

IN COOPERATION WITH THE
U.S. DEPARTMENT OF TRANSPORTATION
FEDERAL HIGHWAY ADMINISTRATION

SCALE IN MILES
0 1 2 3 4 5 Miles

SCALE IN KILOMETERS
0 1 2 3 4 5 Kilometers

LAMBERT CONFORMAL CONIC PROJECTION U.S. & GEODETIC SURVEY DATA
20,000 FOOT GRID, OKLAHOMA PLANE COORDINATE SYSTEM NORTH PROJECTION ZONE
POPULATION FIGURES BASED ON 2010 U.S. CENSUS
OJ, POP, 14-48

ALL DATA CURRENT AS OF DATE LISTED BELOW
October 2, 2018

ALL RIGHTS RESERVED

COMPUTER GENERATED

Copies of this map are available for public use at nominal cost.
Address:
OKLAHOMA DEPARTMENT OF TRANSPORTATION
PRINTING SERVICES Phone (405) 521-2586
200 N.E. 21st STREET
OKLAHOMA CITY, OKLAHOMA 73105-3204

This map indicates those roads known to the Department to be open to public travel. Placement of a road on the map has no relationship to maintenance responsibility by any level of government.