

Copies of this map are available for public use at a nominal cost.
 Address: OKLAHOMA DEPARTMENT OF TRANSPORTATION
 PRINTING SERVICES Phone: (405) 521-2288
 200 N. E. 24th STREET
 OKLAHOMA CITY, OKLAHOMA 73105-3204

This map indicates those roads known to the Department to be open to public travel. Placement of a road on the map has no relationship to maintenance responsibility by any level of government.

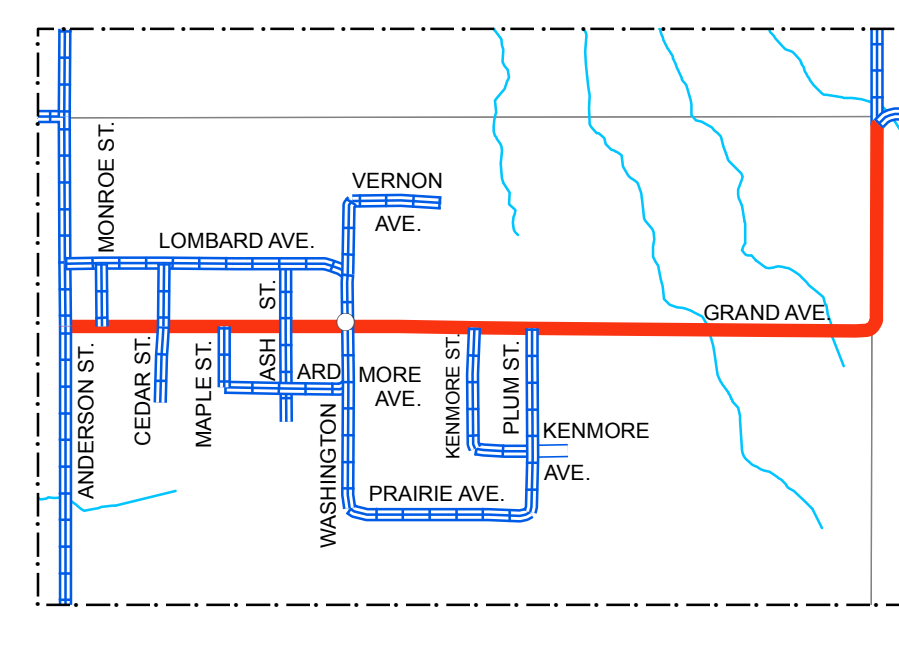
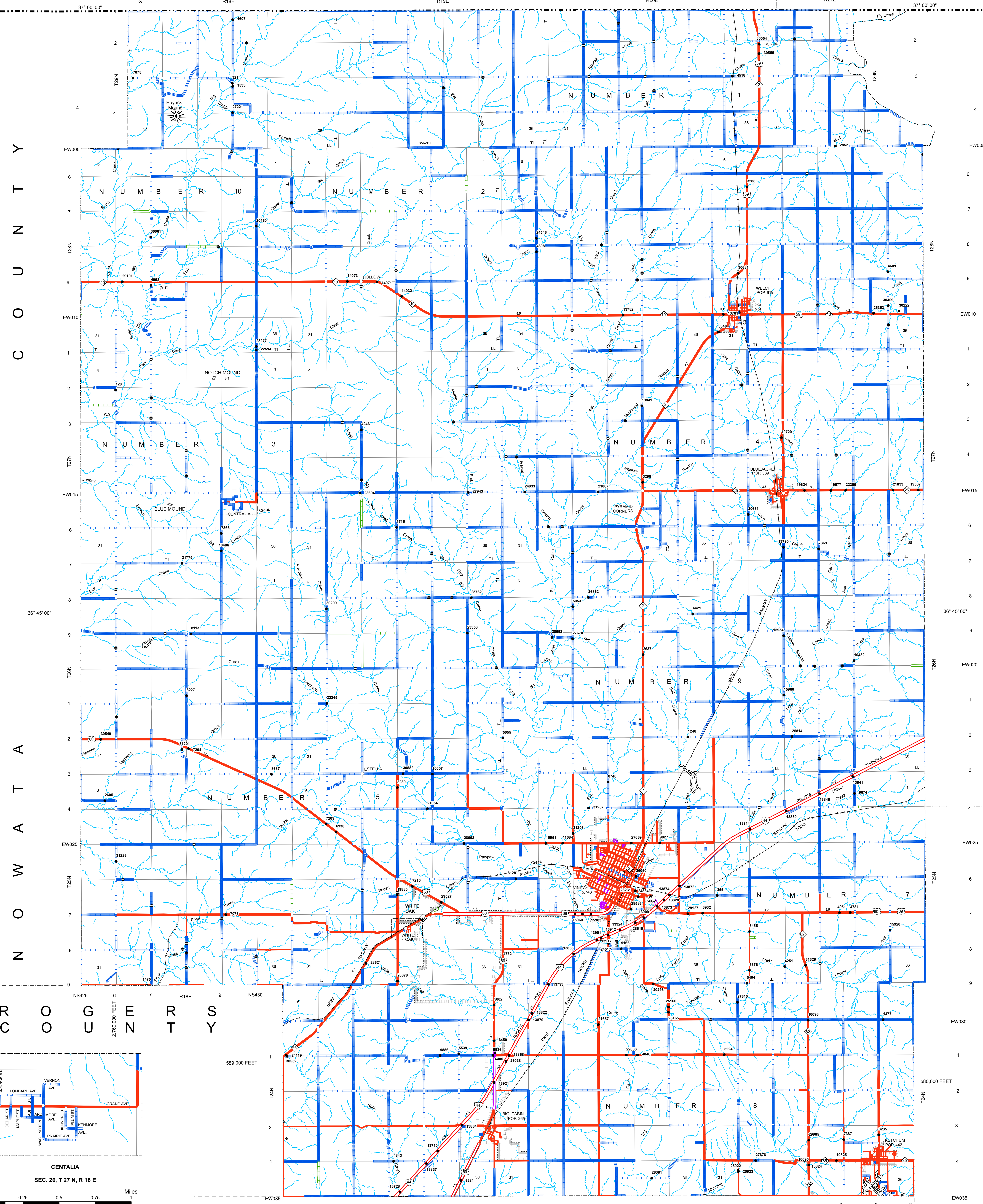
© COPYRIGHT 2018
 PRINTED ON STATE EXPENSE

NOT FOR RESALE

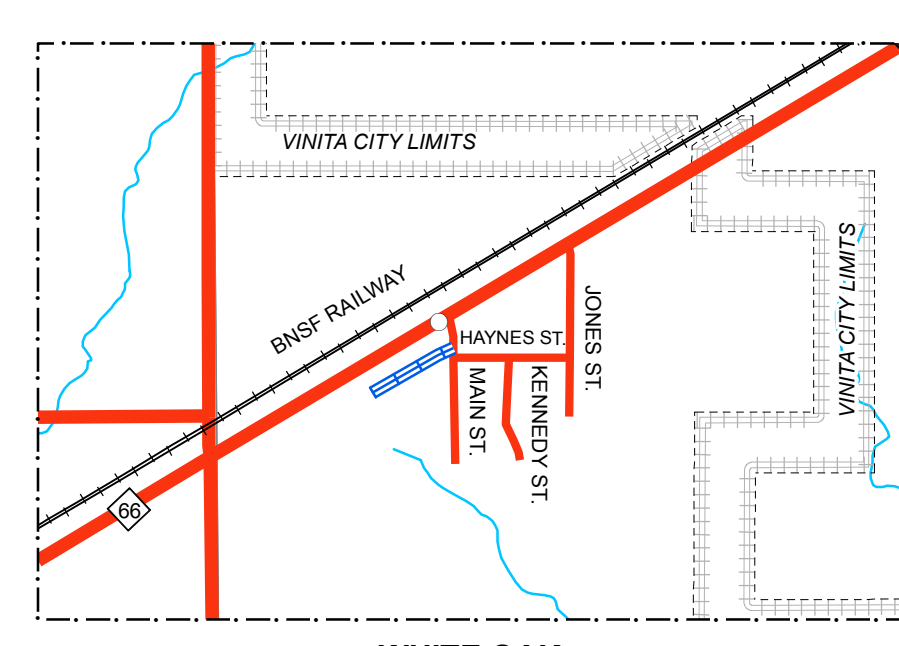
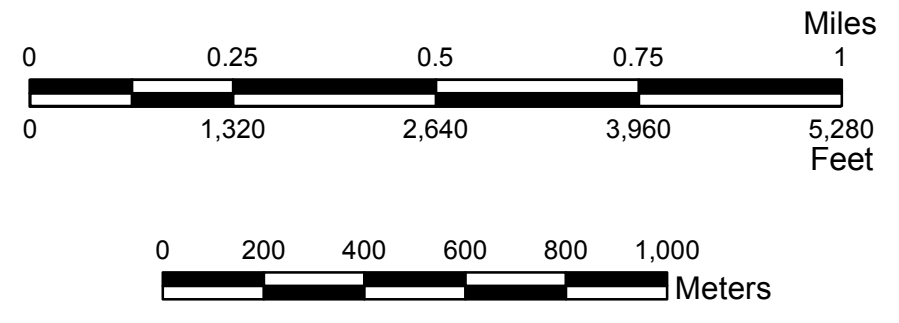
ALL RIGHTS RESERVED

CRAIG COUNTY

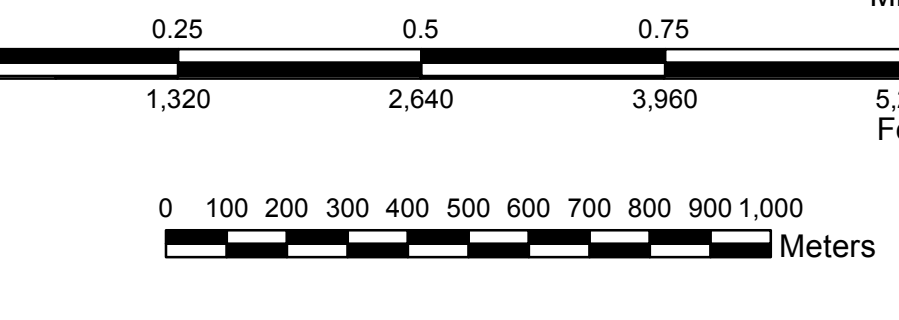
OKLAHOMA
 COMPUTER GENERATED



CENTALIA
 SEC. 26, T 27 N, R 18 E

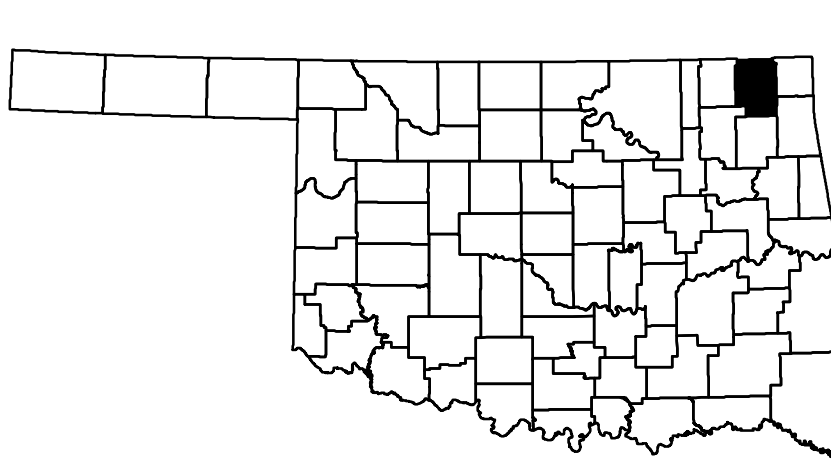


WHITE OAK
 SEC. 27, T 24 N, R 19 E



Legend

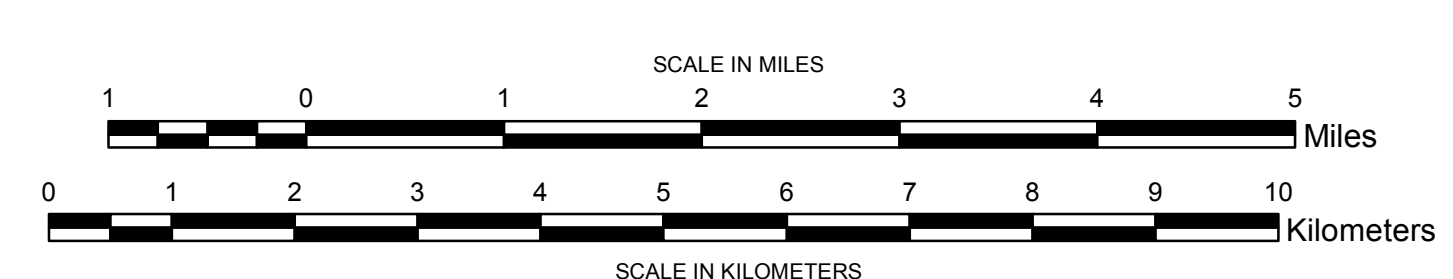
Interstate Highway	Railroad	Bridges
US Highway	River or Stream	Low Water Crossing
State Highway	State Line	Natural Elevation Point
Divided Highway - Asphalt	County Line	Natural Elevation Point
Divided Highway - Concrete	Section Line	
Asphalt	Corporate Limit	
Concrete	Wildlife Management Area	
Gravel	Wildlife Refuge	
Grade & Drain	Lake or Reservoir	
Unimproved		



**GENERAL HIGHWAY MAP
 CRAIG COUNTY
 OKLAHOMA**

PREPARED BY THE
 OKLAHOMA DEPARTMENT OF TRANSPORTATION
 STRATEGIC ASSET AND PERFORMANCE
 MANAGEMENT DIVISION

IN COOPERATION WITH THE
 U.S. DEPARTMENT OF TRANSPORTATION
 FEDERAL HIGHWAY ADMINISTRATION



LAMBERT CONFORMAL CONIC PROJECTION U.S. & GEODETIC SURVEY DATA
 20,000 FOOT GRID; OKLAHOMA PLANE COORDINATE SYSTEM NORTH PROJECTION ZONE
 POPULATION FIGURES BASED ON 2010 U.S. CENSUS
 CD: POP 15,029