

Copies of this map are available for public use at a nominal cost.
 Address: Oklahoma Department of Transportation
 Printing Services Division
 200 N. E. 24th Street
 Oklahoma City, Oklahoma 73105-3204

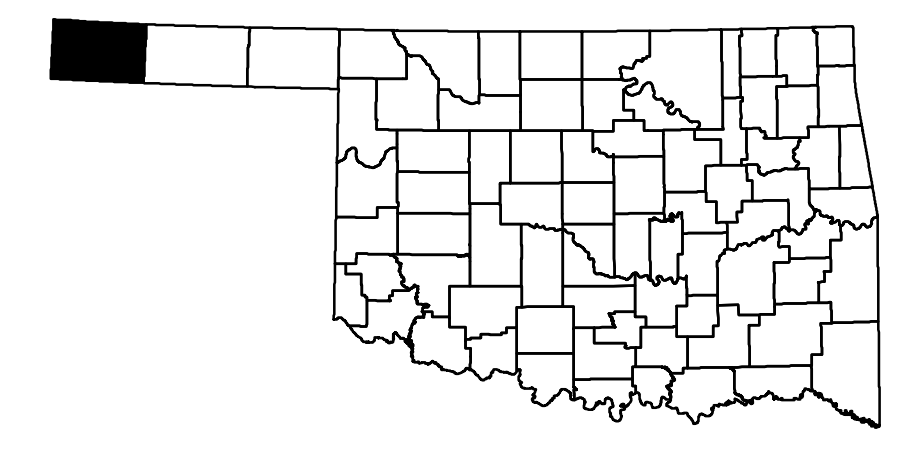
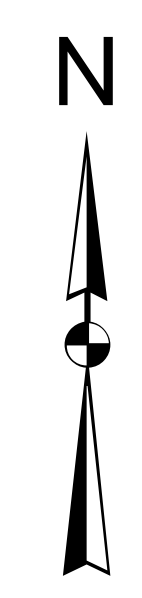
This map indicates those roads known to the Department to be open to public travel. Placement of a road on the map has no relationship to maintenance responsibility by any level of government.

© Copyright 2018
 Printed on Recycled Paper
NOT FOR RESALE

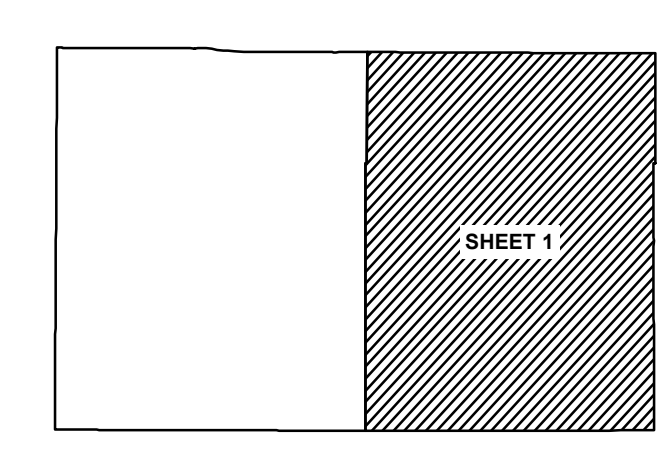
ALL RIGHTS RESERVED
 GENERAL HIGHWAY MAP
CIMARRON COUNTY
 OKLAHOMA
 COMPUTER GENERATED

Legend

- | | | |
|------------------------------|----------------------------|---------------------------|
| ◇ State Highway | — Railroad | • Bridges |
| ⊠ US Highway | — River or Stream | • Low Water Crossing |
| — Divided Highway - Asphalt | — State Line | ☼ Natural Elevation Point |
| — Divided Highway - Concrete | — County Line | • Natural Elevation Point |
| — Asphalt | — Section Line | |
| — Concrete | — Corporate Limit | |
| — Gravel | ▨ Wildlife Management Area | |
| — Grade & Drain | ▨ Wildlife Refuge | |
| — Unimproved | ▭ Lake or Reservoir | |



ALL DATA CURRENT AS OF DATE LISTED BELOW
 October 2, 2018



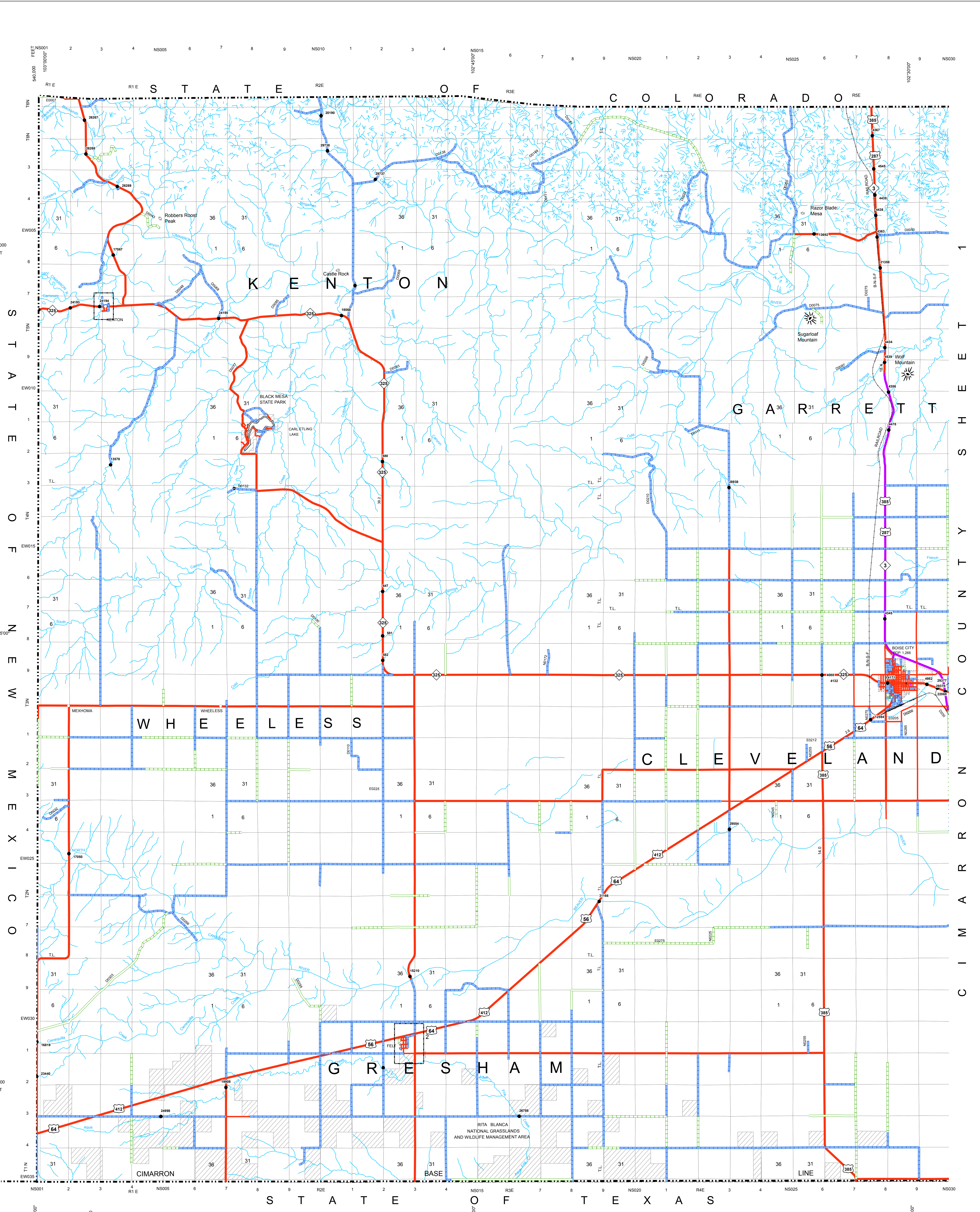
GENERAL HIGHWAY MAP
CIMARRON COUNTY
OKLAHOMA

PREPARED BY THE
OKLAHOMA DEPARTMENT OF TRANSPORTATION
 STRATEGIC ASSET AND PERFORMANCE
 MANAGEMENT DIVISION

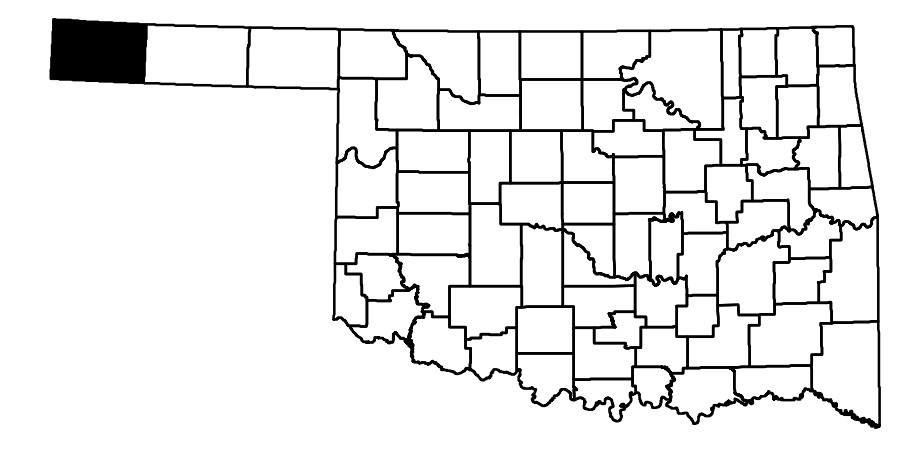
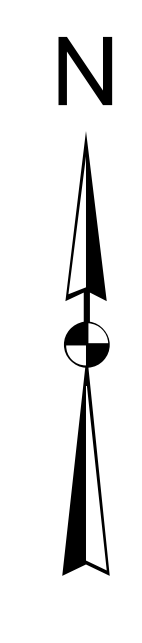
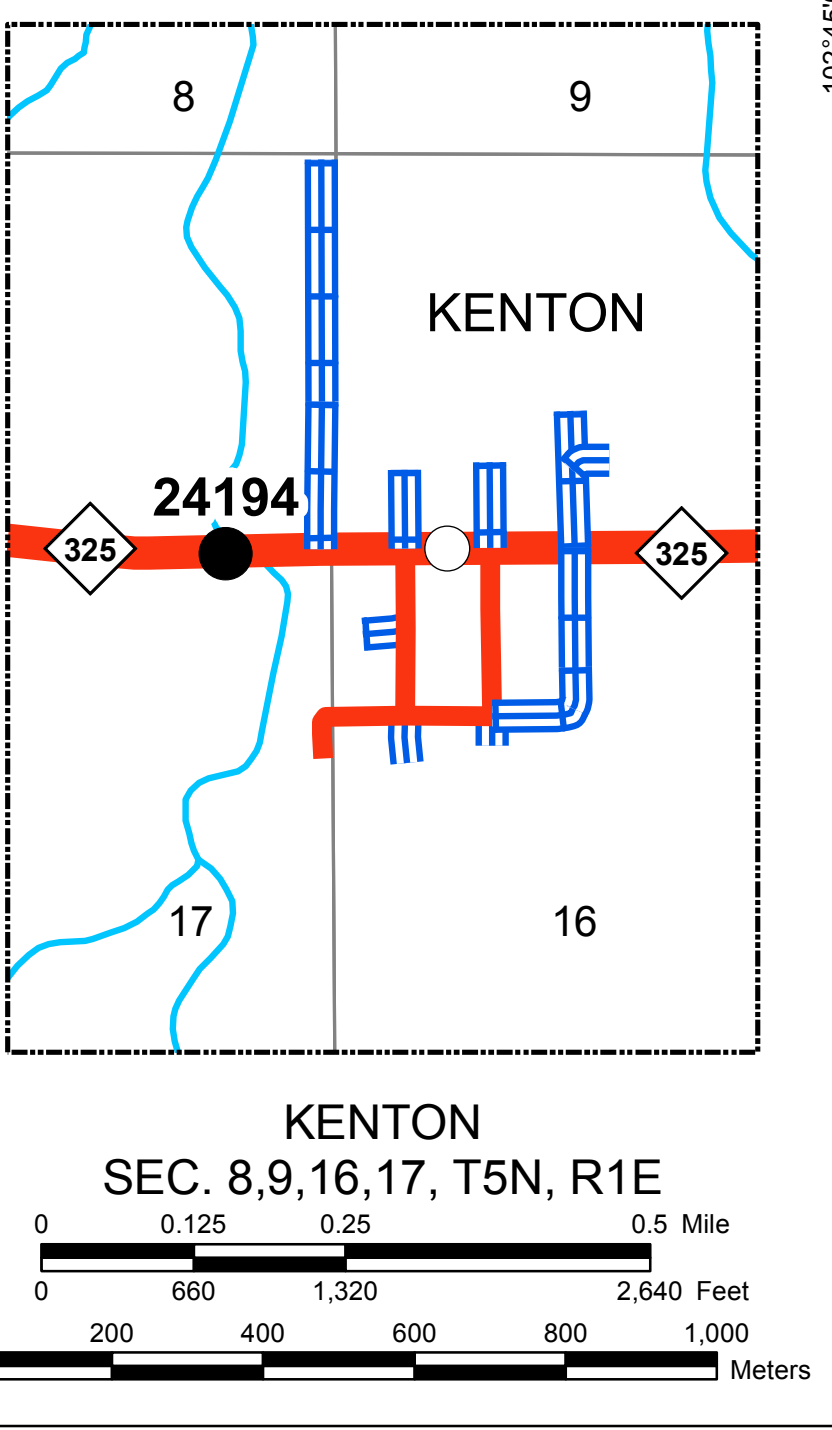
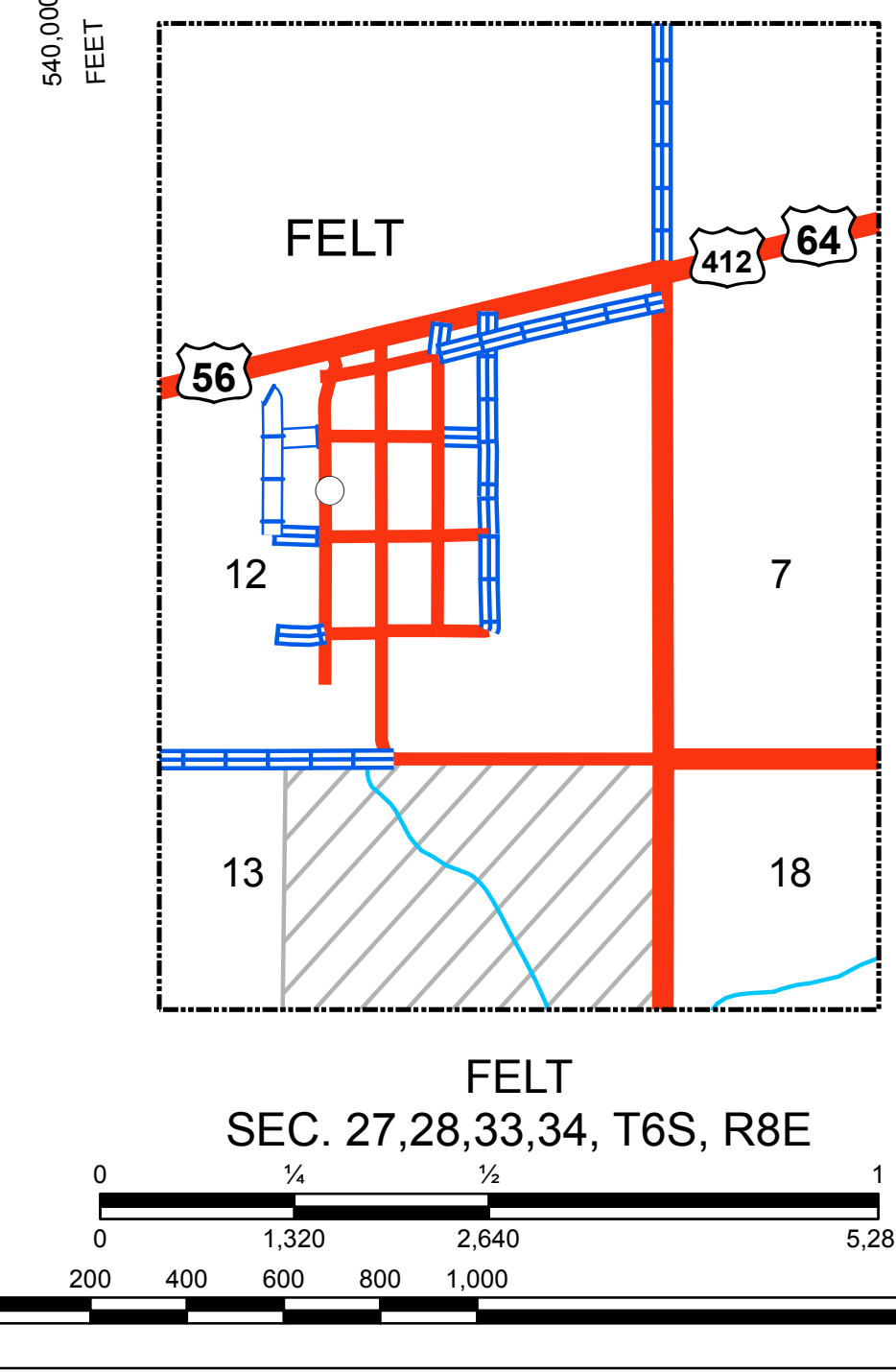
IN COOPERATION WITH THE
U.S. DEPARTMENT OF TRANSPORTATION
 FEDERAL HIGHWAY ADMINISTRATION

LAMBERT CONFORMAL CONIC PROJECTION U.S. & GEODETIC SURVEY DATA
 20,000 FOOT GRID; OKLAHOMA PLANE COORDINATE SYSTEM NORTH PROJECTION ZONE
 POPULATION FIGURES BASED ON 2010 U.S. CENSUS
 CD, POP 2,475

Address: OKLAHOMA DEPARTMENT OF TRANSPORTATION
PRINTING SERVICES Phone (405) 521-2285
200 N. E. 24th STREET
OKLAHOMA CITY, OKLAHOMA 73105-3204



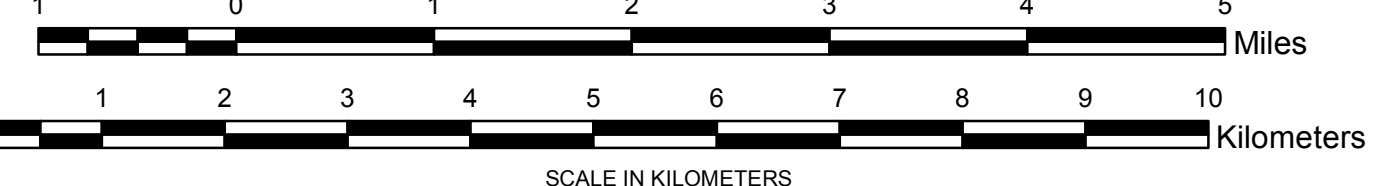
Copyright 2018
PRINTED ON SUSTAINABLE PAPER
ALL RIGHTS RESERVED



ALL DATA CURRENT AS OF DATE LISTED BELOW
October 2, 2018

GENERAL HIGHWAY MAP CIMARRON COUNTY OKLAHOMA

PREPARED BY THE
OKLAHOMA DEPARTMENT OF TRANSPORTATION
STRATEGIC ASSET AND PERFORMANCE
MANAGEMENT DIVISION
IN COOPERATION WITH THE
U.S. DEPARTMENT OF TRANSPORTATION
FEDERAL HIGHWAY ADMINISTRATION



LAMBERT CONFORMAL CONIC PROJECTION U.S. & GEODETIC SURVEY DATA
2000 FOOT GRID; OKLAHOMA PLANE COORDINATE SYSTEM NORTH PROJECTION ZONE
POPULATION FIGURES BASED ON 2010 U.S. CENSUS
CD POP 2-475