

Copies of this map are available for public use at a nominal cost.
 Address: TRANSPORTATION SERVICES DIVISION
 200 N. E. 21st STREET
 OKLAHOMA CITY, OKLAHOMA 73105-3204

This map indicates those roads known to the Department to be open to public travel. Placement of a road on the map has no relationship to maintenance responsibility by any level of government.

© COPYRIGHT 2018
 PRINTED ON SUSTAINABLE PAPER

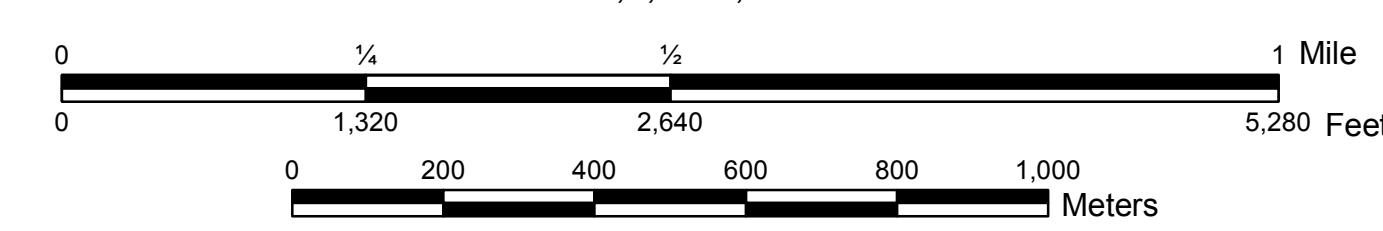
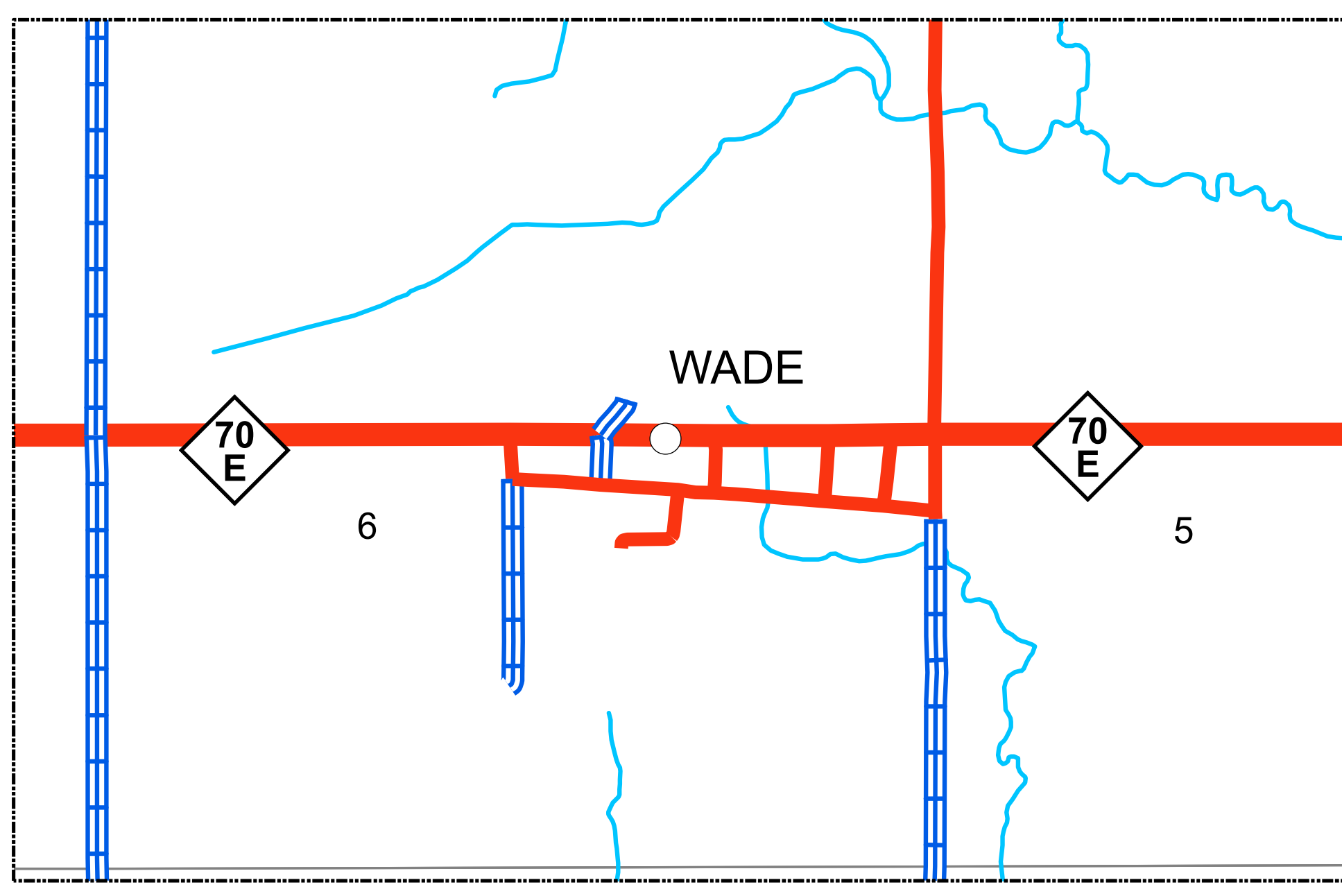
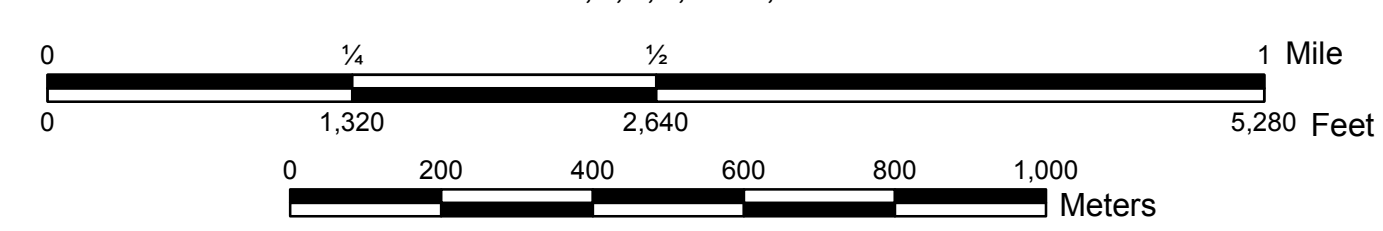
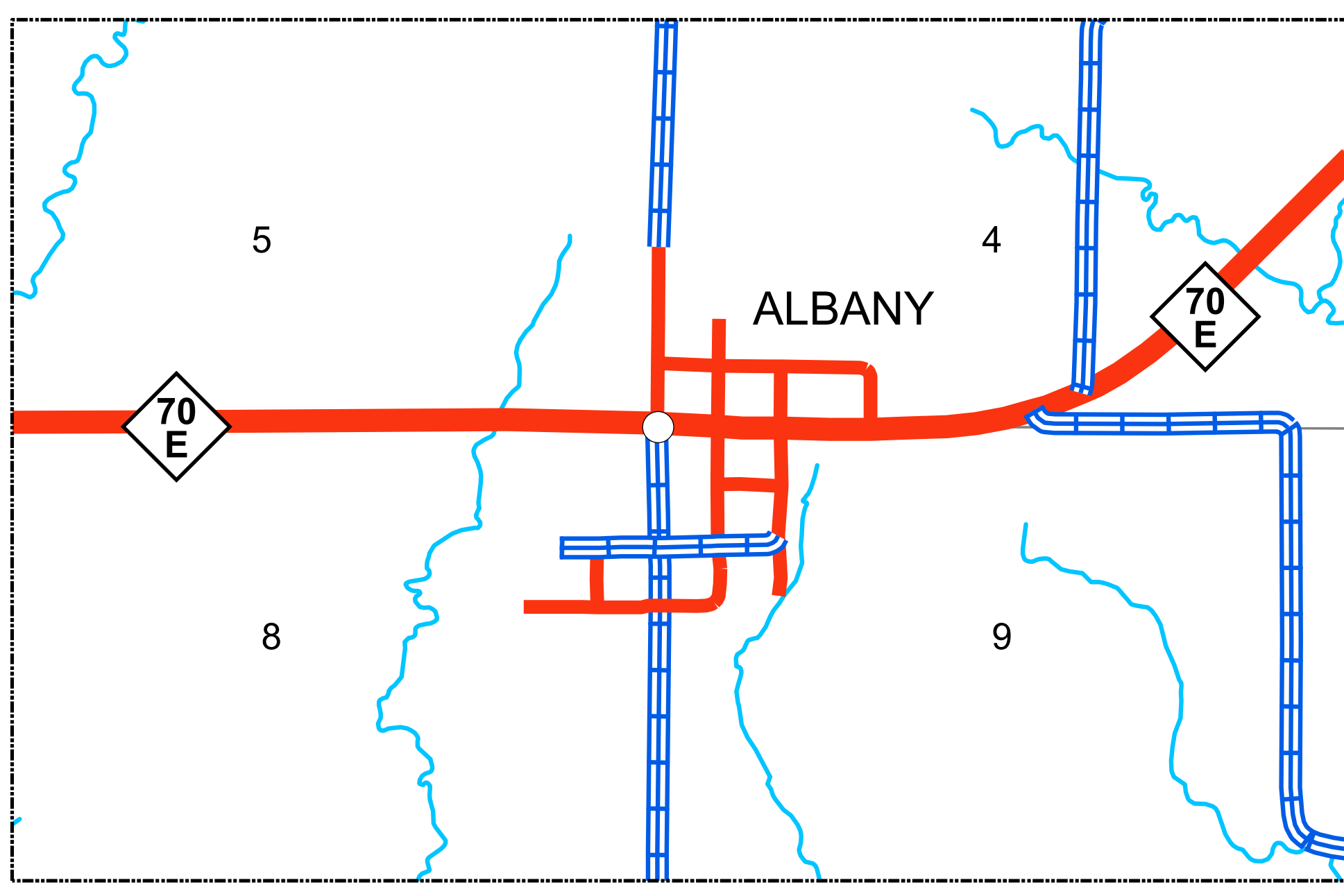
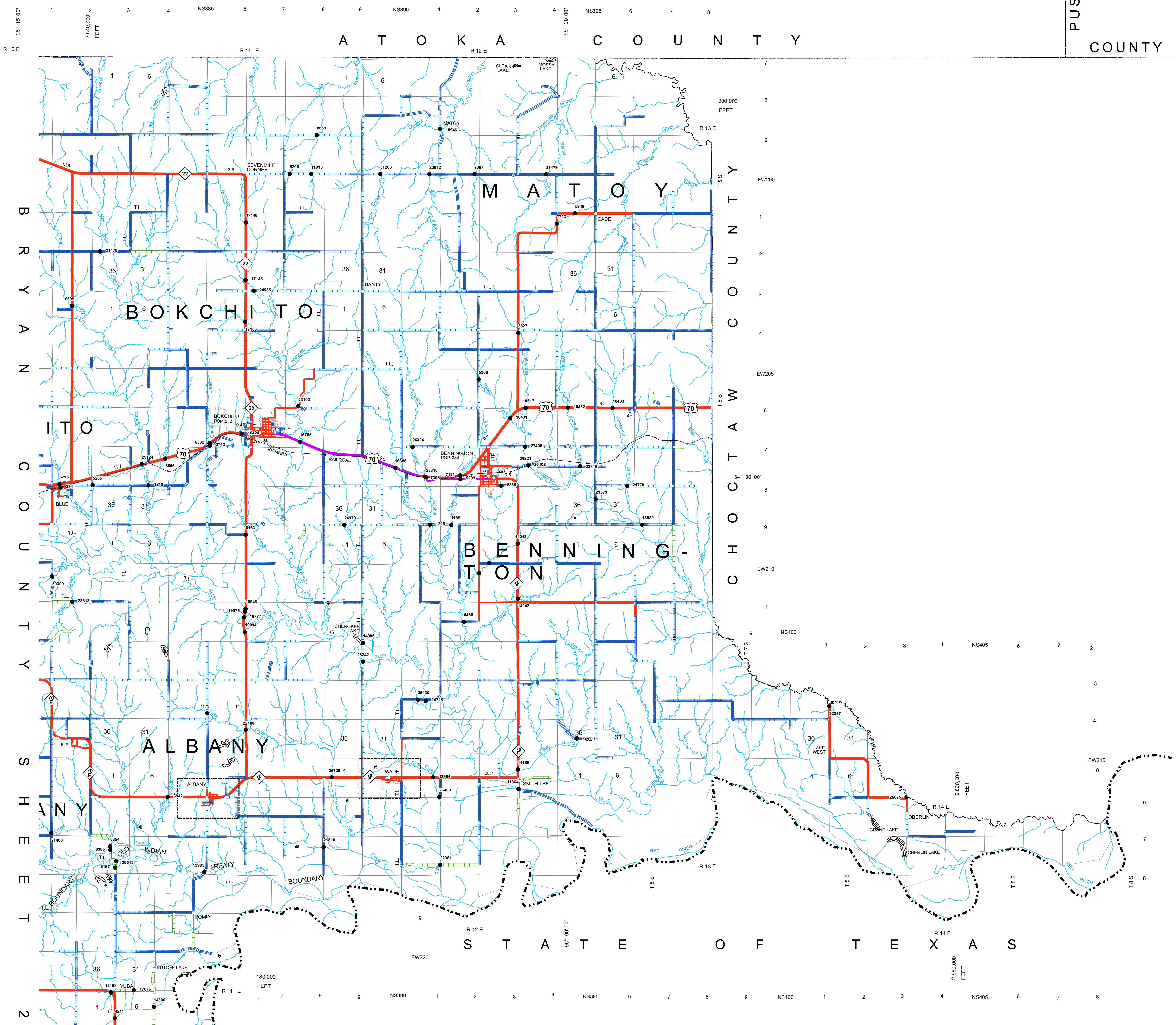
NOT FOR RESALE

ALL RIGHTS RESERVED

GENERAL HIGHWAY MAP
 BRYAN COUNTY

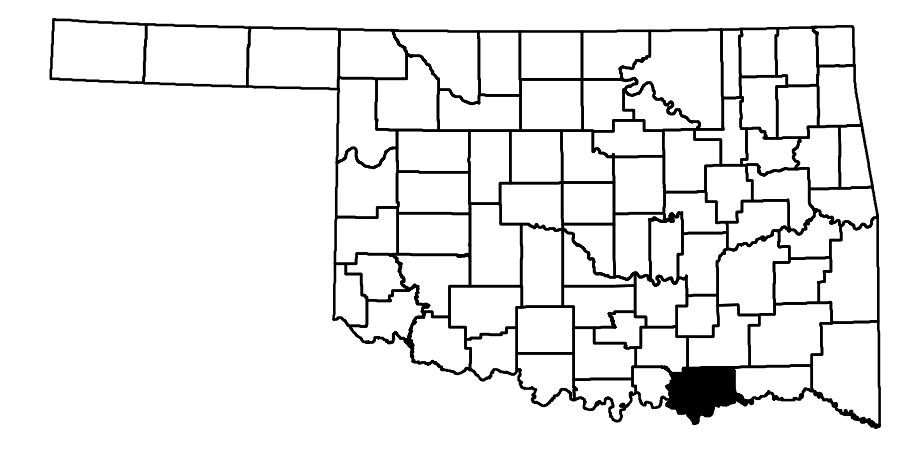
OKLAHOMA
 COMPUTER GENERATED

PUSHMATAHA COUNTY



Legend

- ◇ State Highway
- US Highway
- Divided Highway - Asphalt
- Divided Highway - Concrete
- Asphalt
- Concrete
- Gravel
- Grade & Drain
- Unimproved
- Railroad
- State Line
- County Line
- Section Line
- Corporate Limit
- Wildlife Management Area
- Wildlife Refuge
- River or Stream
- Lake or Reservoir
- Bridges
- Low Water Crossing
- ☼ Natural Elevation Point
- ◊ Natural Elevation Point

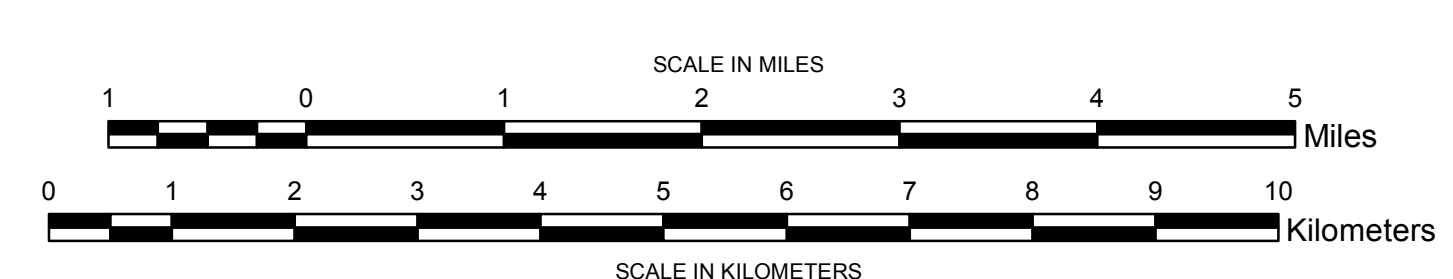


ALL DATA CURRENT AS OF DATE LISTED BELOW
 October 2, 2018

GENERAL HIGHWAY MAP
 BRYAN COUNTY
 OKLAHOMA

PREPARED BY THE
 OKLAHOMA DEPARTMENT OF TRANSPORTATION
 STRATEGIC ASSET AND PERFORMANCE
 MANAGEMENT DIVISION

IN COOPERATION WITH THE
 U.S. DEPARTMENT OF TRANSPORTATION
 FEDERAL HIGHWAY ADMINISTRATION



LAMBERT CONFORMAL CONIC PROJECTION U.S. & GEODETIC SURVEY DATA
 20,000 FOOT GRID; OKLAHOMA PLANE COORDINATE SYSTEM NORTH PROJECTION ZONE
 POPULATION FIGURES BASED ON 2010 U.S. CENSUS
 CD: POP-42-416

This map indicates those roads known to the Department to be open to public travel. Placement of a road on the map has no relationship to maintenance responsibility by any level of government.

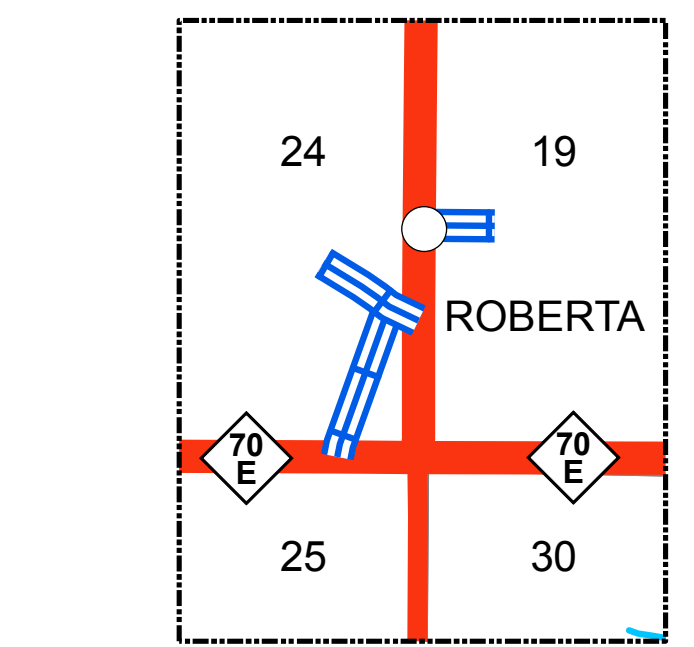
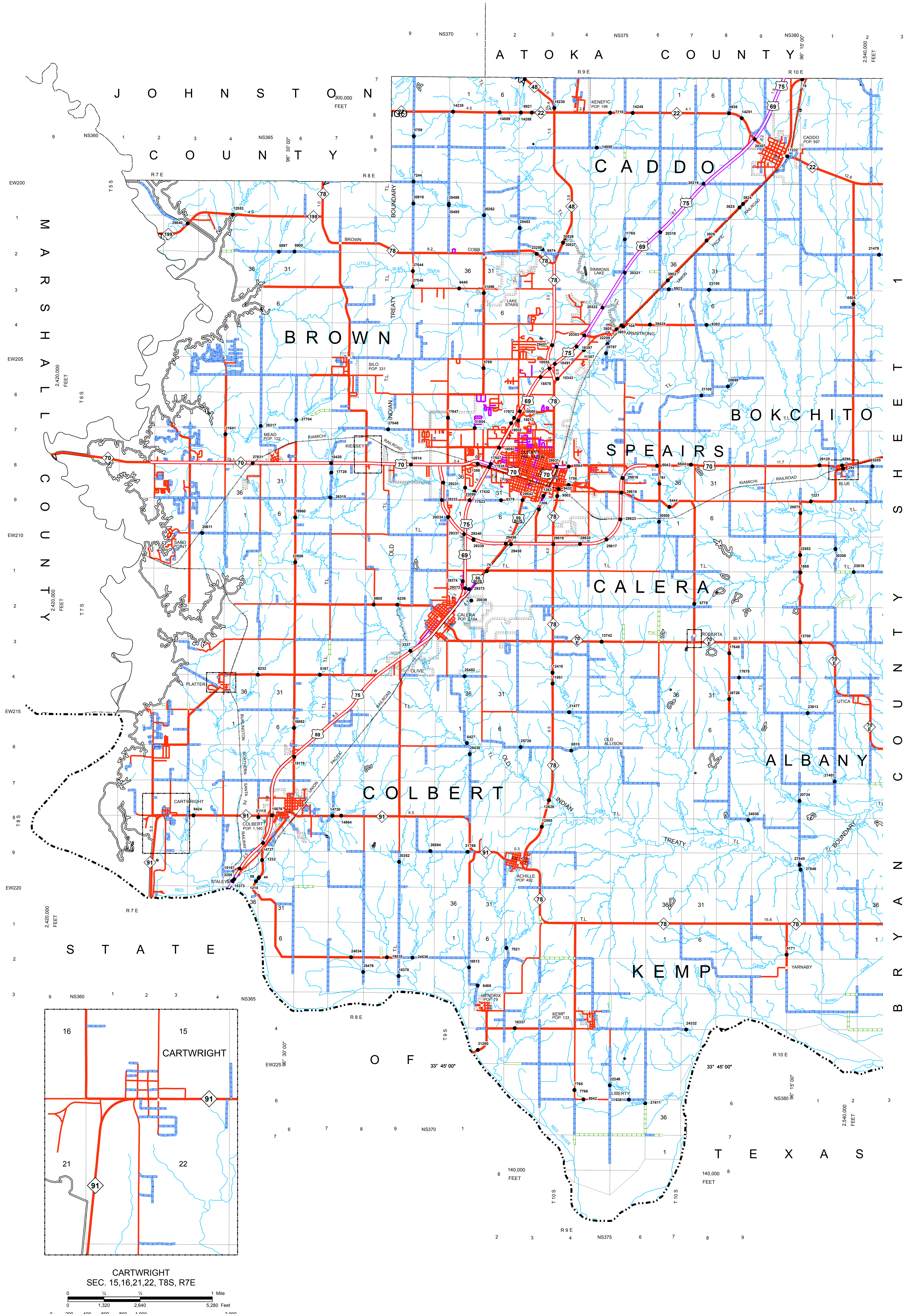
© COPYRIGHT 2018
 PRINTING SERVICE EXPENSE

NOT FOR RESALE

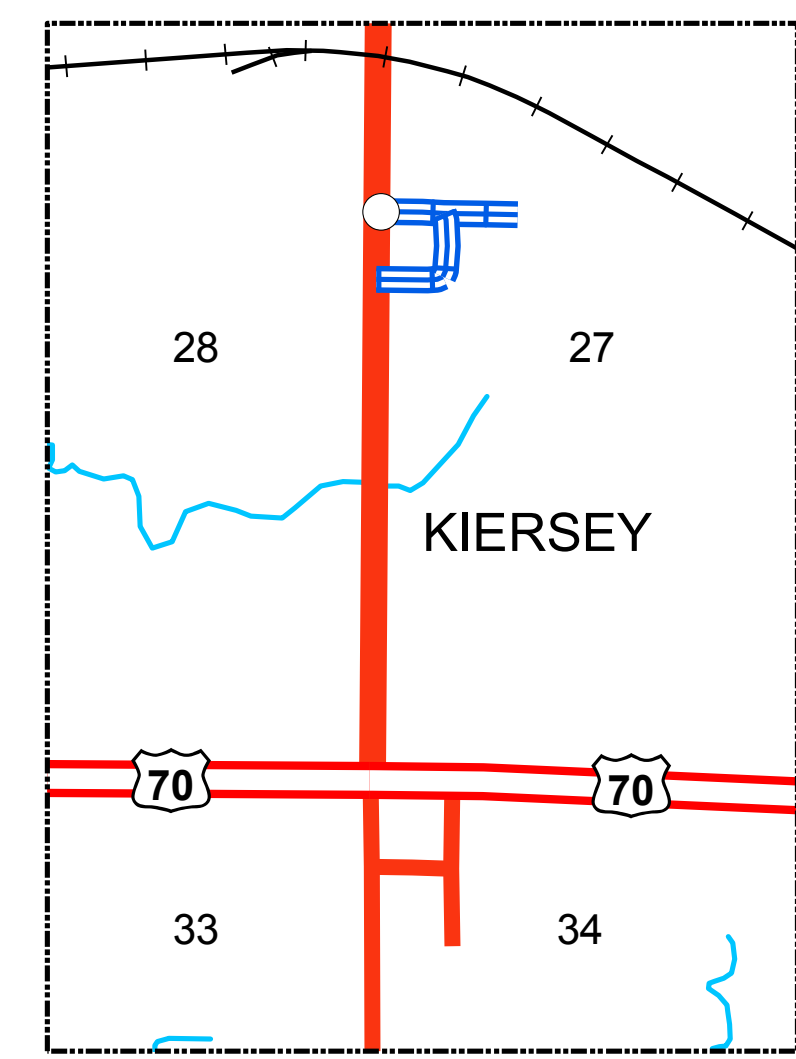
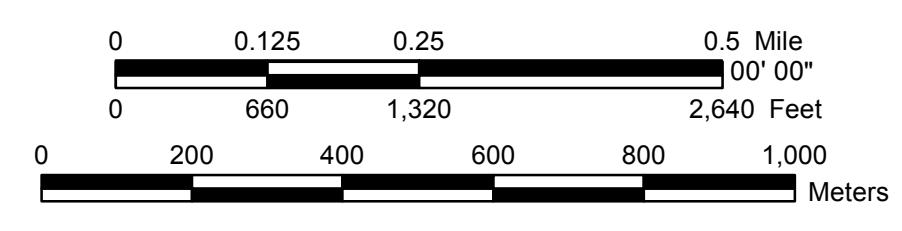
ALL RIGHTS RESERVED

GENERAL HIGHWAY MAP
 BRYAN COUNTY

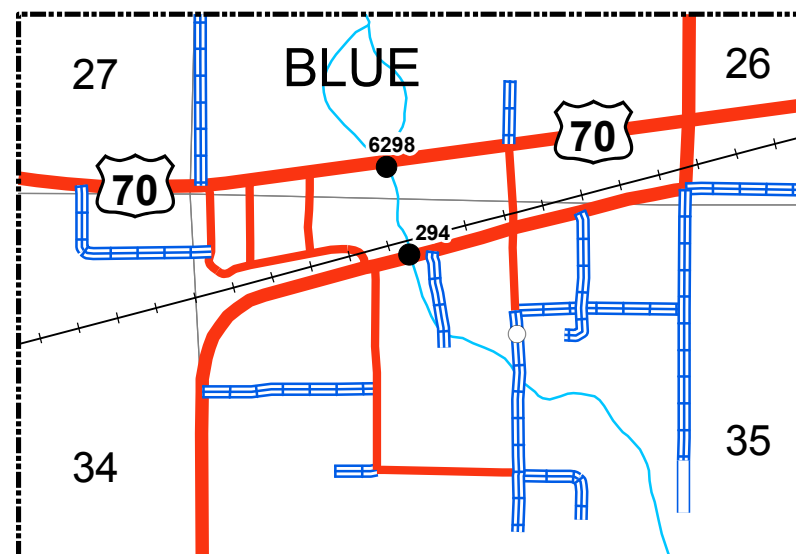
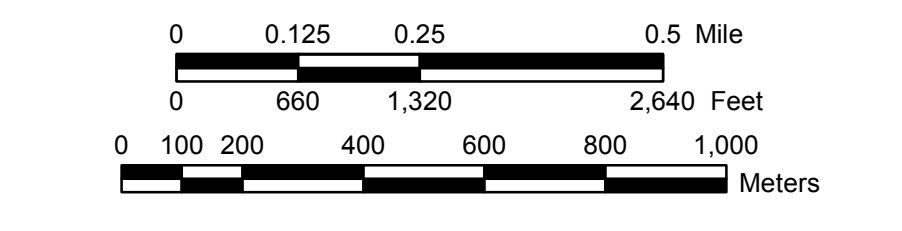
OKLAHOMA
 COMPUTER GENERATED
 7



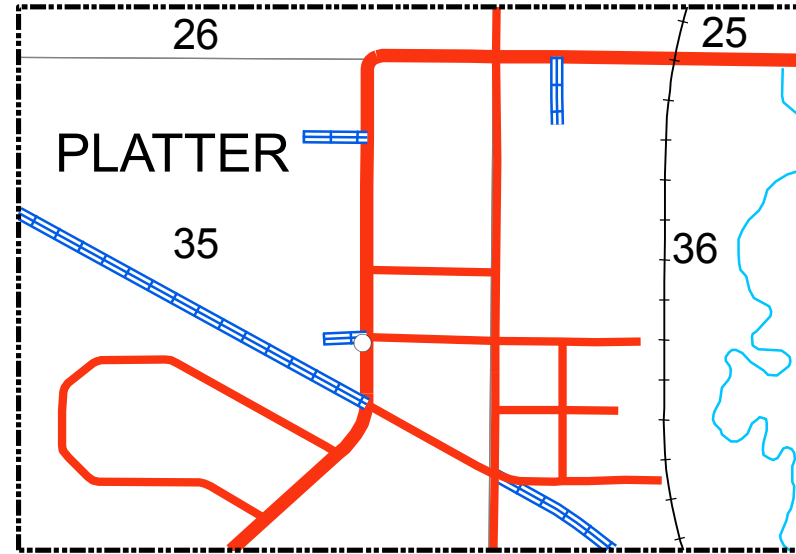
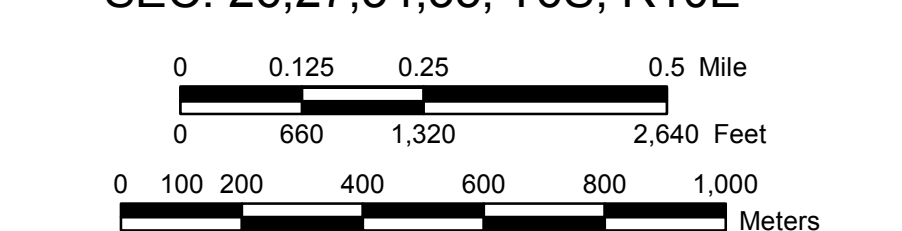
ROBERTA
 SEC. 19,24,25,30, T7S, R9,10E



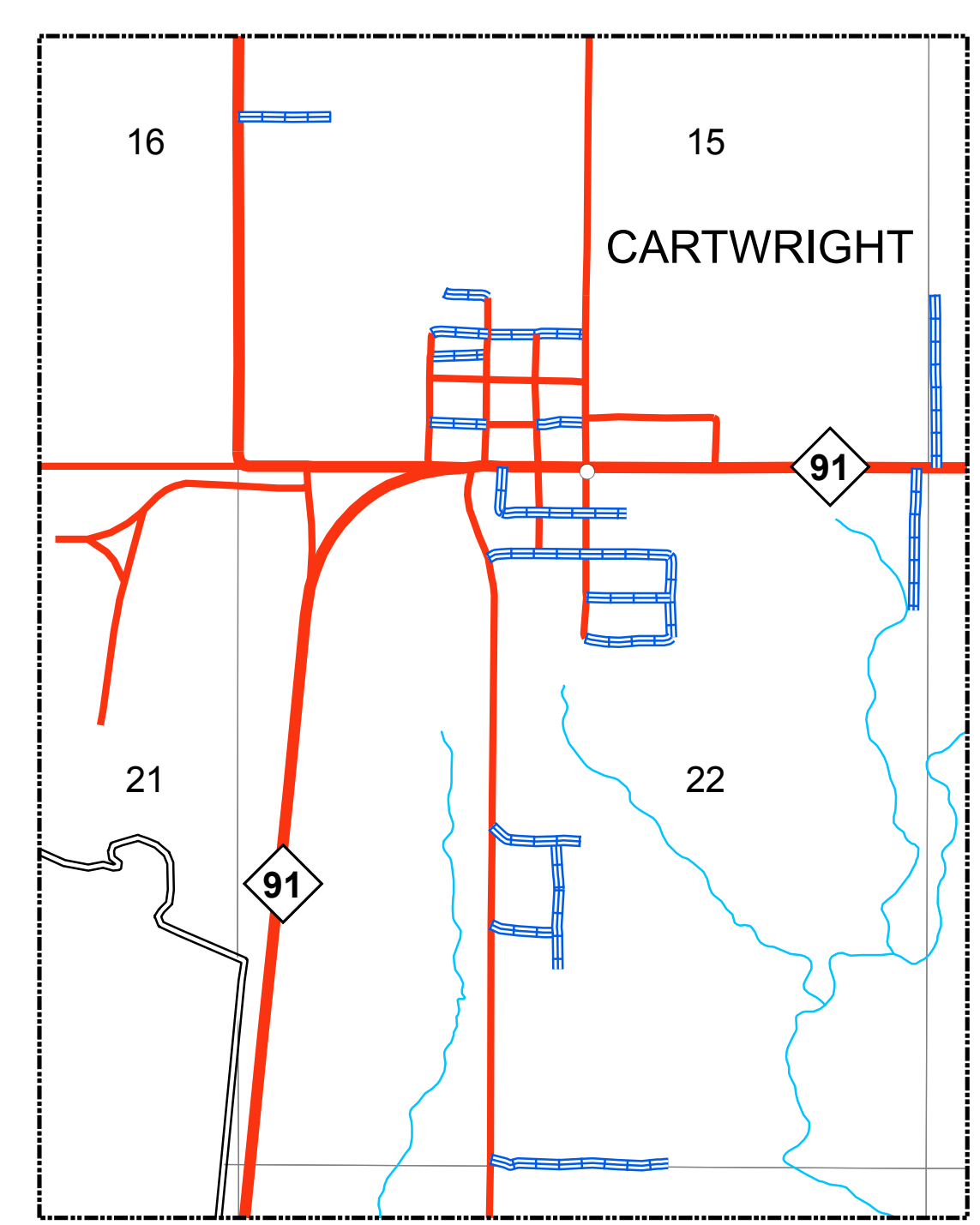
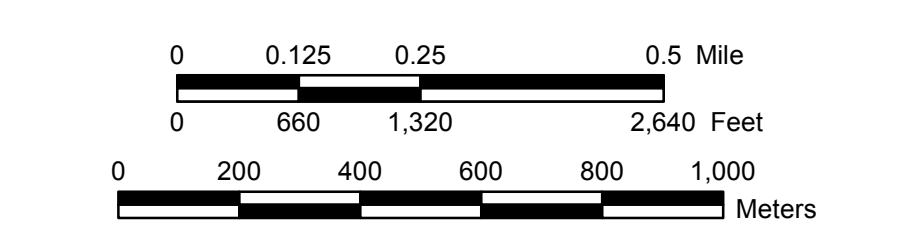
KIERSEY
 SEC. 27,28,33,34, T6S, R8E



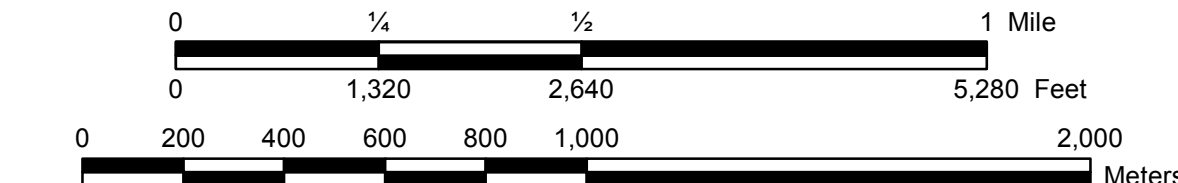
BLUE
 SEC. 26,27,34,35, T6S, R10E



PLATTER
 SEC. 25,26,35,36, T7S, R7E

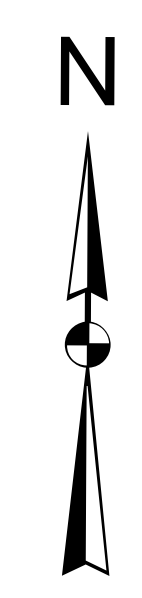
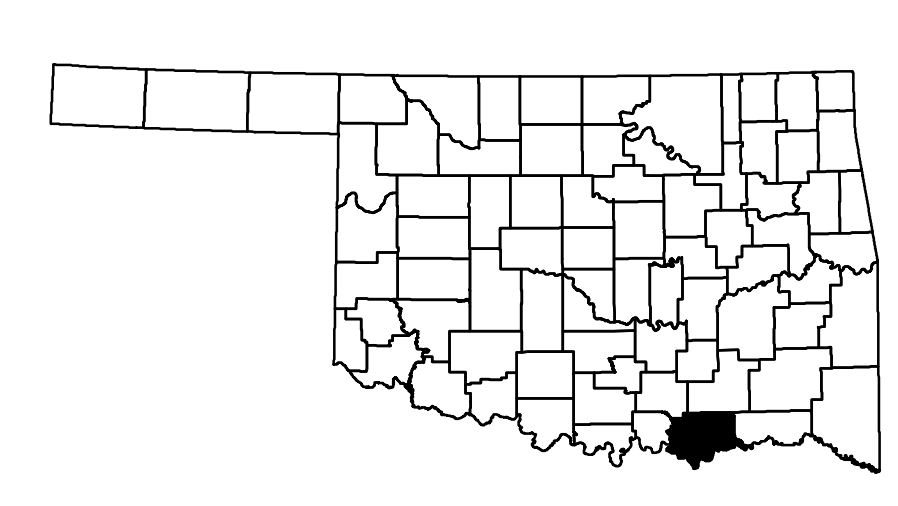


CARTWRIGHT
 SEC. 15,16,21,22, T8S, R7E



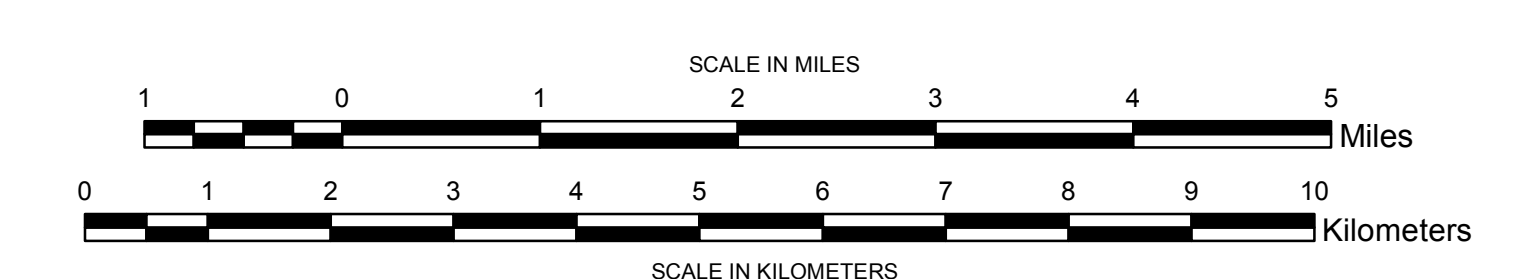
Legend

- | | | |
|------------------------------|----------------------------|---------------------------|
| ◇ State Highway | ▬ State Line | • Bridges |
| □ US Highway | ▬ County Line | • Low Water Crossing |
| ▬ Divided Highway - Asphalt | ▬ Section Line | ☼ Natural Elevation Point |
| ▬ Divided Highway - Concrete | ▬ Corporate Limit | • Natural Elevation Point |
| ▬ Asphalt | ▨ Wildlife Management Area | |
| ▬ Concrete | ▨ Wildlife Refuge | |
| ▬ Gravel | ▬ River or Stream | |
| ▬ Grade & Drain | ▭ Lake or Reservoir | |
| ▬ Unimproved | | |
| ▬ Railroad | | |



**GENERAL HIGHWAY MAP
 BRYAN COUNTY
 OKLAHOMA**

PREPARED BY THE
 OKLAHOMA DEPARTMENT OF TRANSPORTATION
 STRATEGIC ASSET AND PERFORMANCE
 MANAGEMENT DIVISION
 IN COOPERATION WITH THE
 U.S. DEPARTMENT OF TRANSPORTATION
 FEDERAL HIGHWAY ADMINISTRATION



LAMBERT CONFORMAL CONIC PROJECTION U.S. & GEODETIC SURVEY DATA
 2000 FOOT GRID, OKLAHOMA PLANE COORDINATE SYSTEM NORTH PROJECTION ZONE
 POPULATION FIGURES BASED ON 2010 U.S. CENSUS
 CD: POP-42-416