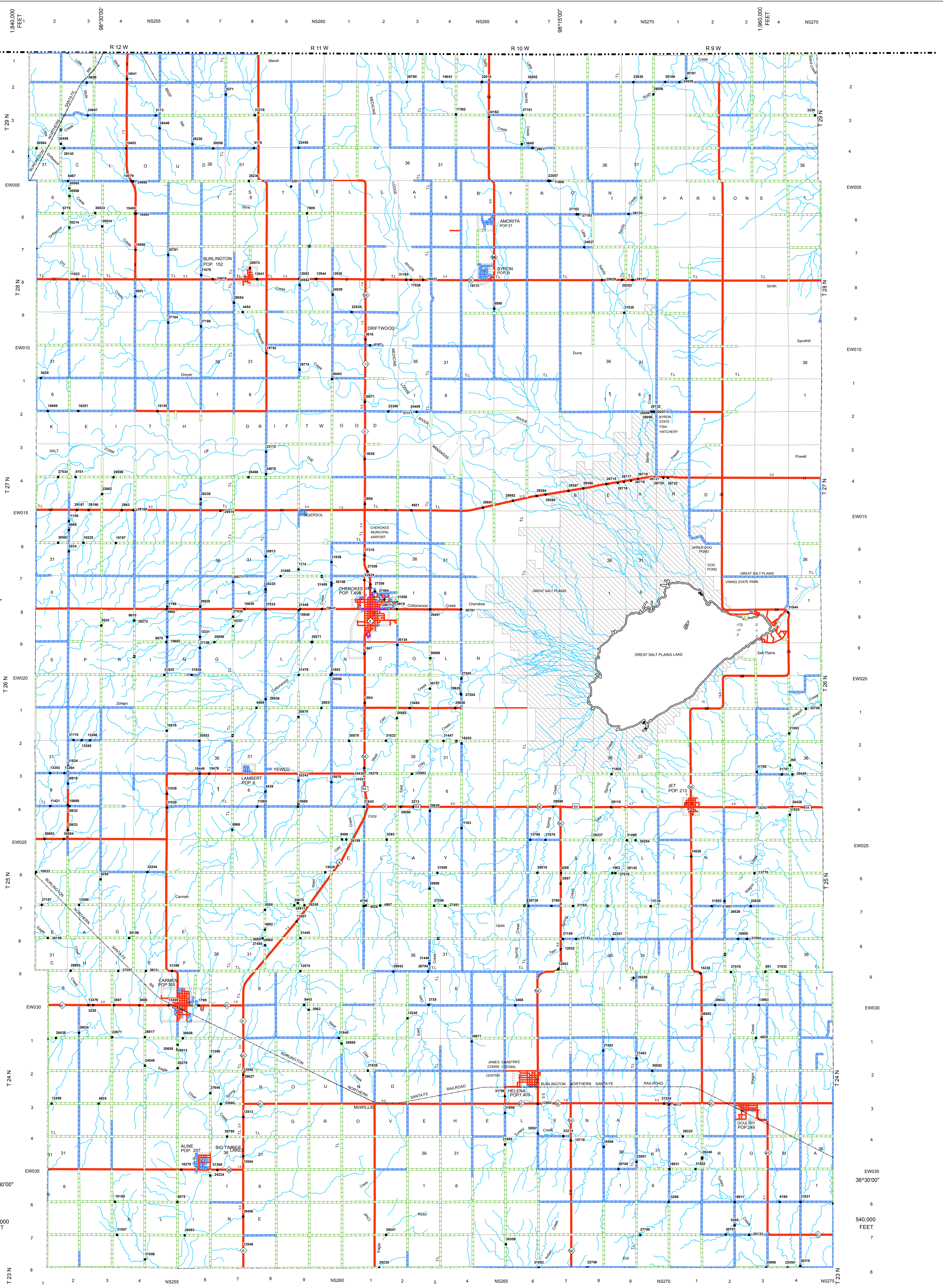


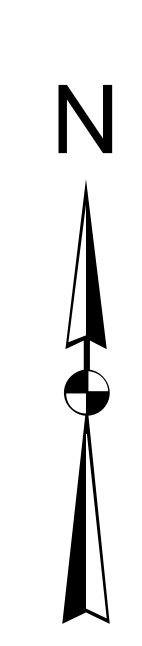
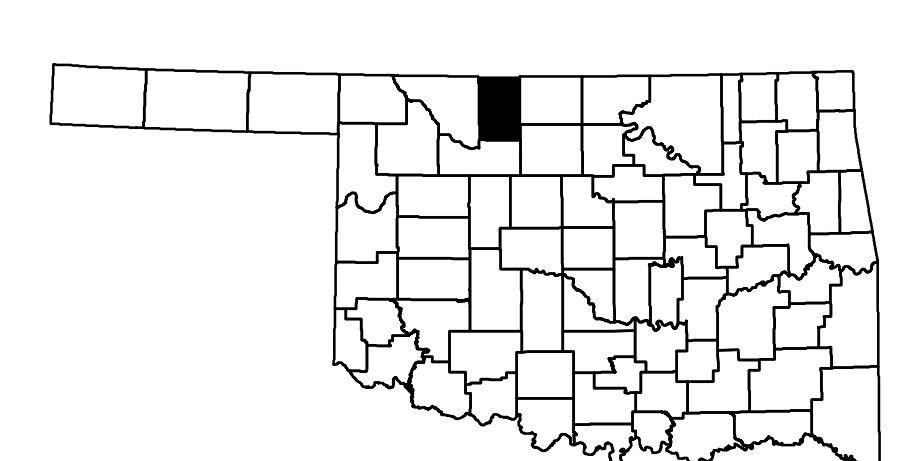
Copies of this map are available for public use at a nominal cost.  
 Address: OPERATIONS DIVISION OF TRANSPORTATION  
 PRINTING SERVICES Phone (405) 521-2288  
 200 N. E. 24th STREET  
 OKLAHOMA CITY, OKLAHOMA 73105-3204

This map indicates those roads known to the Department to be open to public travel. Placement of a road on the map has no relationship to maintenance responsibility by any level of government.



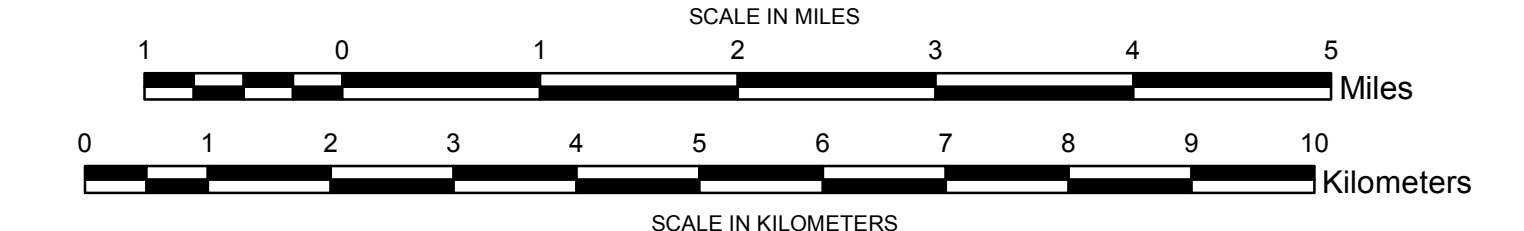
**Legend**

- Natural Elevation Point
- Divided Highway - Asphalt
- State Line
- County Line
- Natural Elevation Point
- Divided Highway - Concrete
- Lake or Reservoir
- River or Stream
- State Highway
- Asphalt
- Wildlife Management Area
- Wildlife Refuge
- US Highway
- Concrete
- Section Line
- Bridges
- Gravel
- Corporate Limit
- Low Water Crossing
- Grade & Drain
- Railroad
- Unimproved



**GENERAL HIGHWAY MAP  
 ALFALFA COUNTY  
 OKLAHOMA**

PREPARED BY THE  
 OKLAHOMA DEPARTMENT OF TRANSPORTATION  
 STRATEGIC ASSET AND PERFORMANCE  
 MANAGEMENT DIVISION  
 IN COOPERATION WITH THE  
 U.S. DEPARTMENT OF TRANSPORTATION  
 FEDERAL HIGHWAY ADMINISTRATION



ALL DATA CURRENT AS OF DATE LISTED BELOW  
 October 2, 2018

LAMBERT CONFORMAL CONIC PROJECTION U.S. & GEODETIC SURVEY DATA  
 30,000(7) FOOT GRID; OKLAHOMA PLANE COORDINATE SYSTEM (NORTH); PROJECTION ZONE:  
 POPULATION FIGURES BASED ON 2010 U.S. CENSUS  
 CO. POP. 5,642