

Copies of this map are available for public use at a nominal cost.
 Address: OKLAHOMA DEPARTMENT OF TRANSPORTATION
 PRINTING SERVICES Phone (405) 521-2266
 200 N. E. 24th STREET
 OKLAHOMA CITY, OKLAHOMA 73105-3204

This map indicates those roads known to the Department to be open to public travel. Placement of a road on the map has no relationship to maintenance responsibility by any level of government.

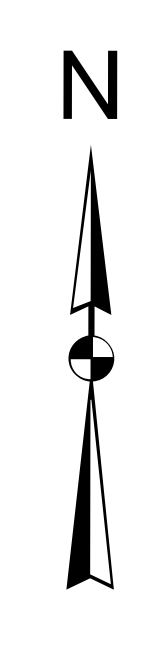
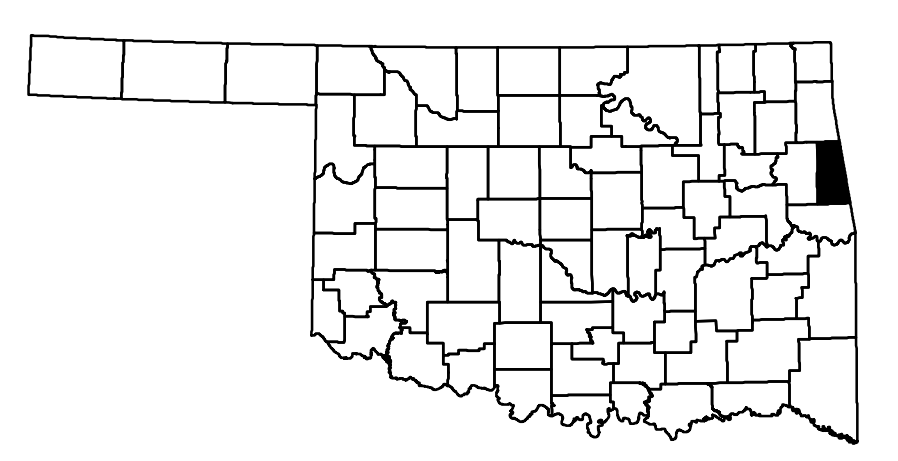
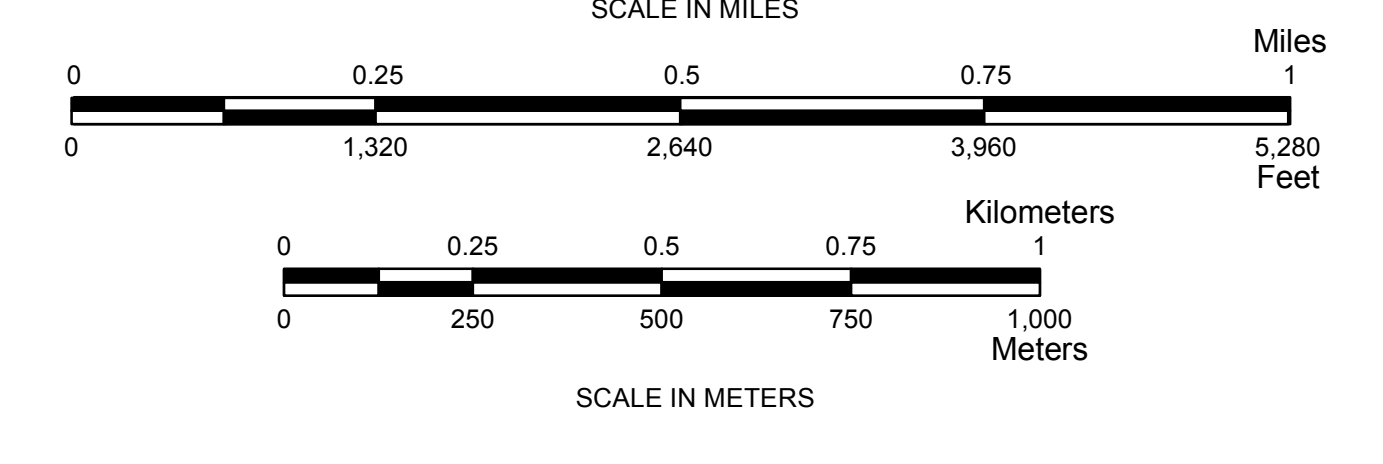
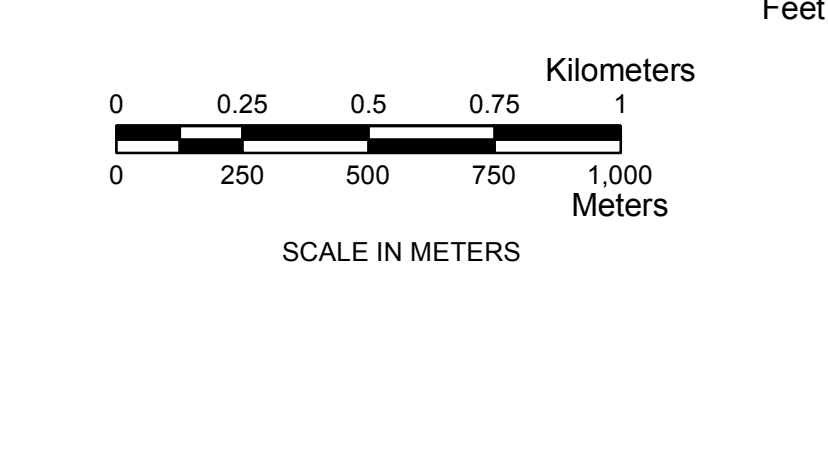
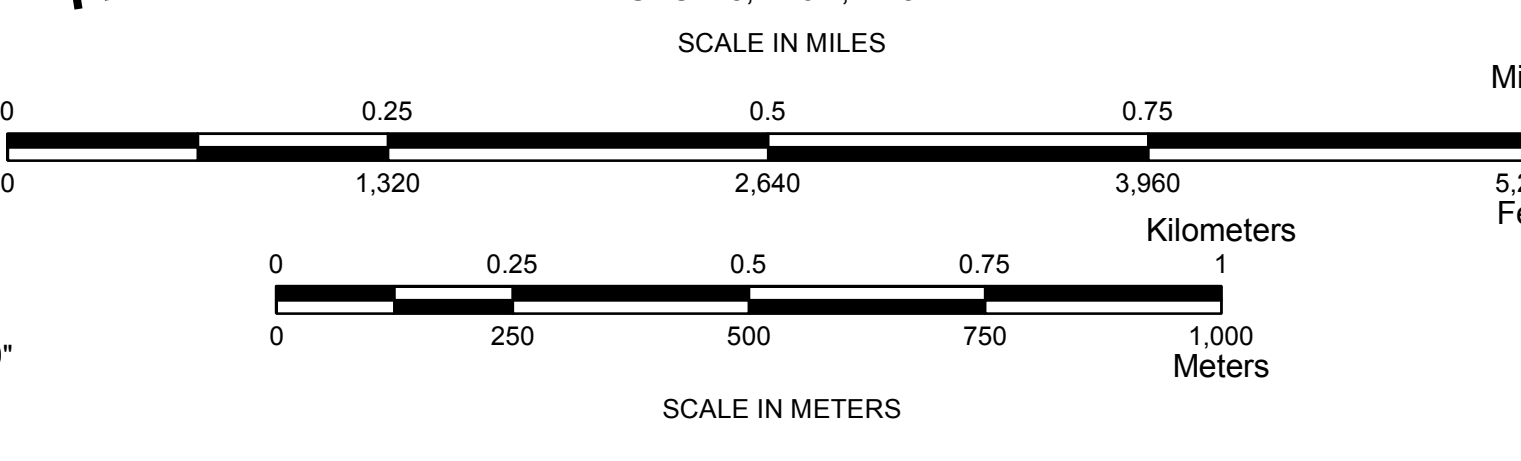
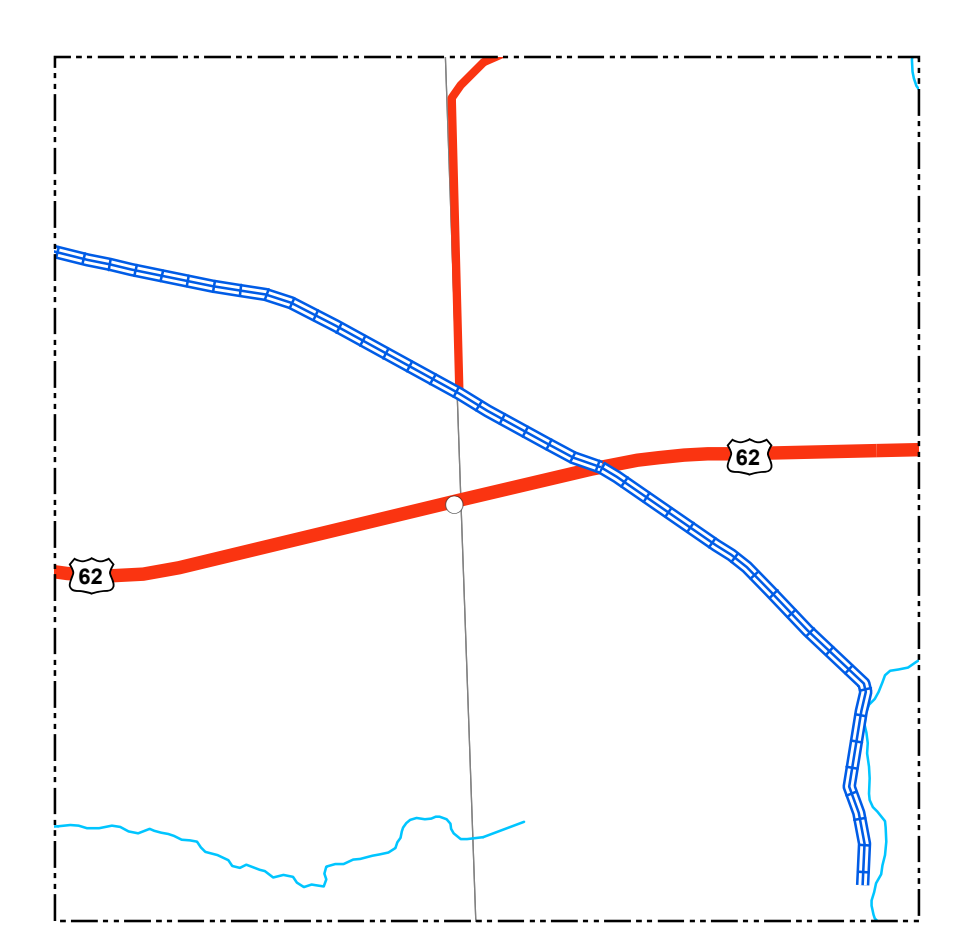
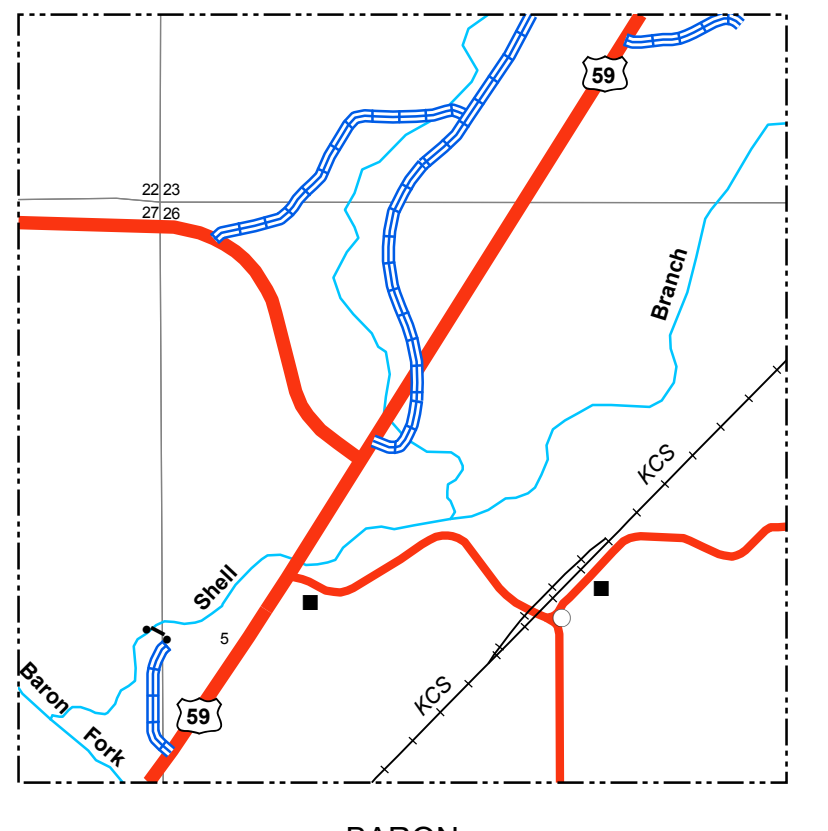
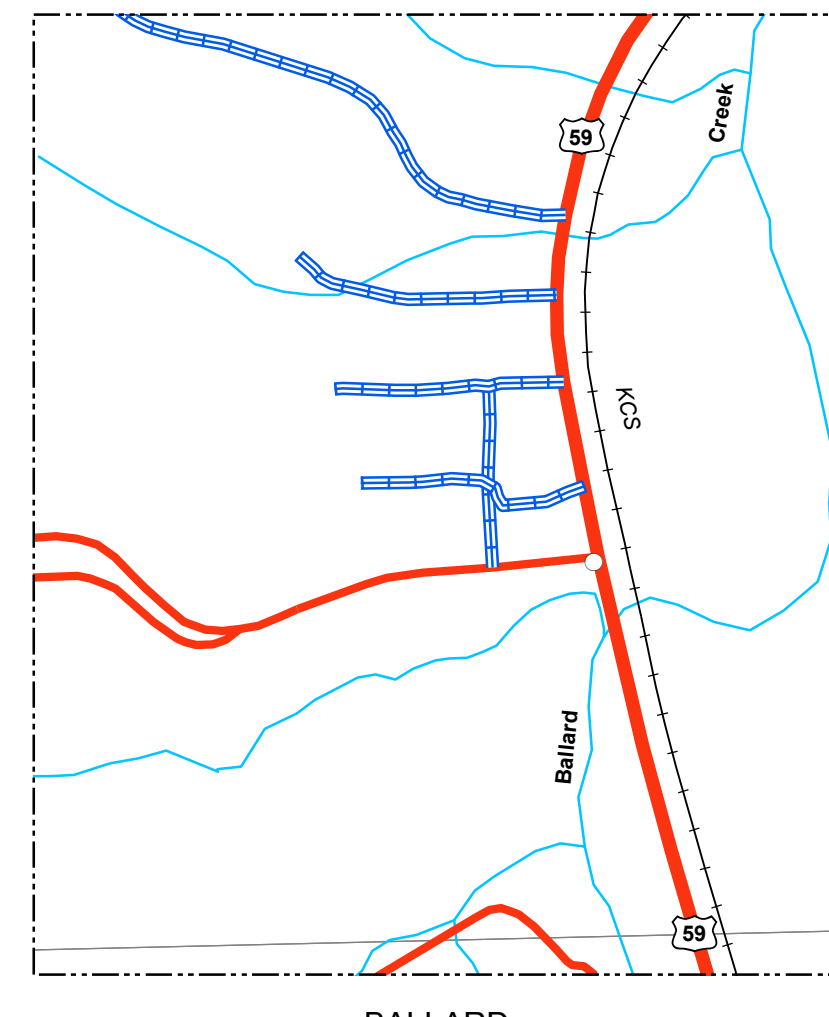
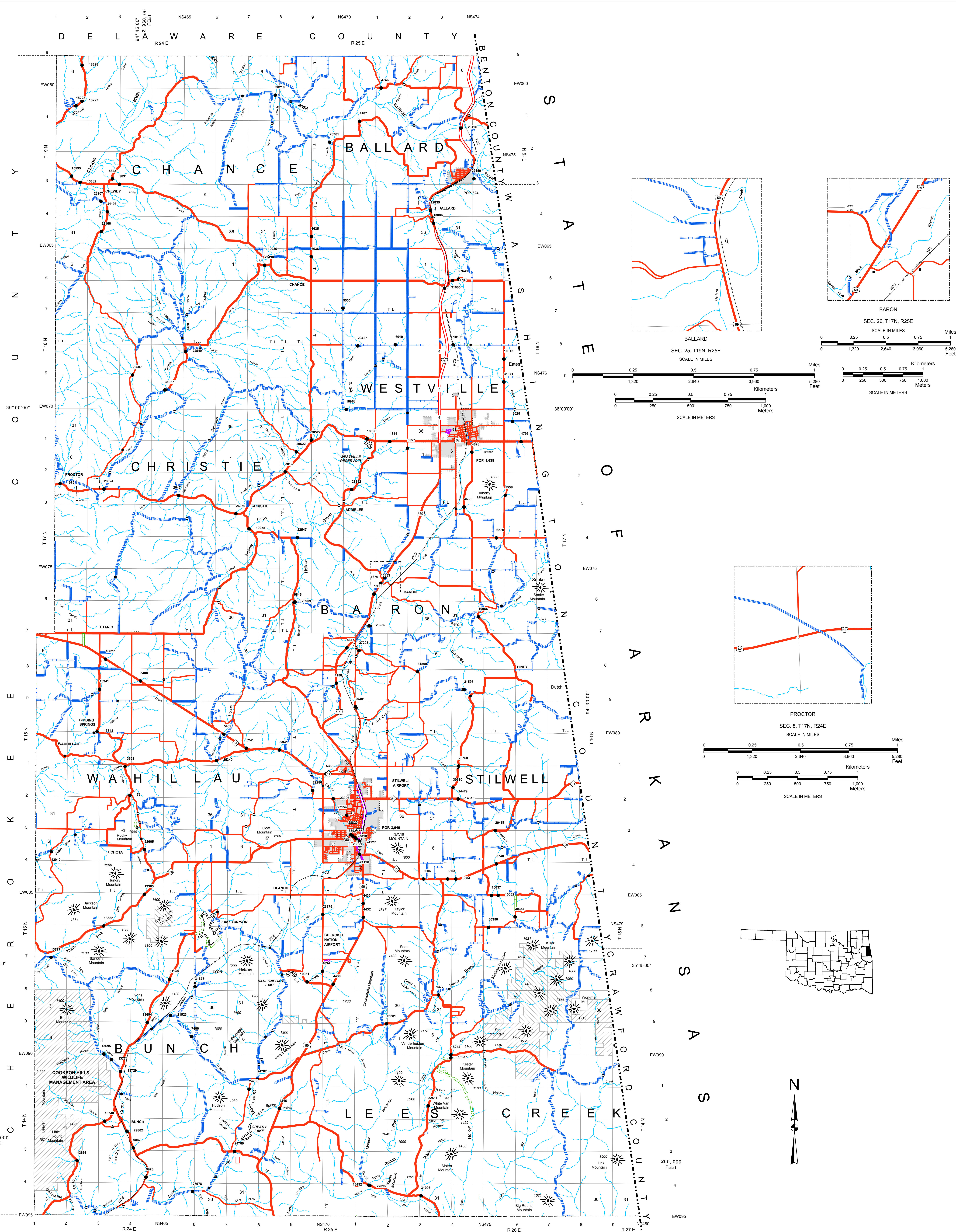
© COPYRIGHT 2018
 PRINTED ON STABLE PAPER

NOT FOR RESALE

ALL RIGHTS RESERVED
 GENERAL HIGHWAY MAP

ADAIR COUNTY

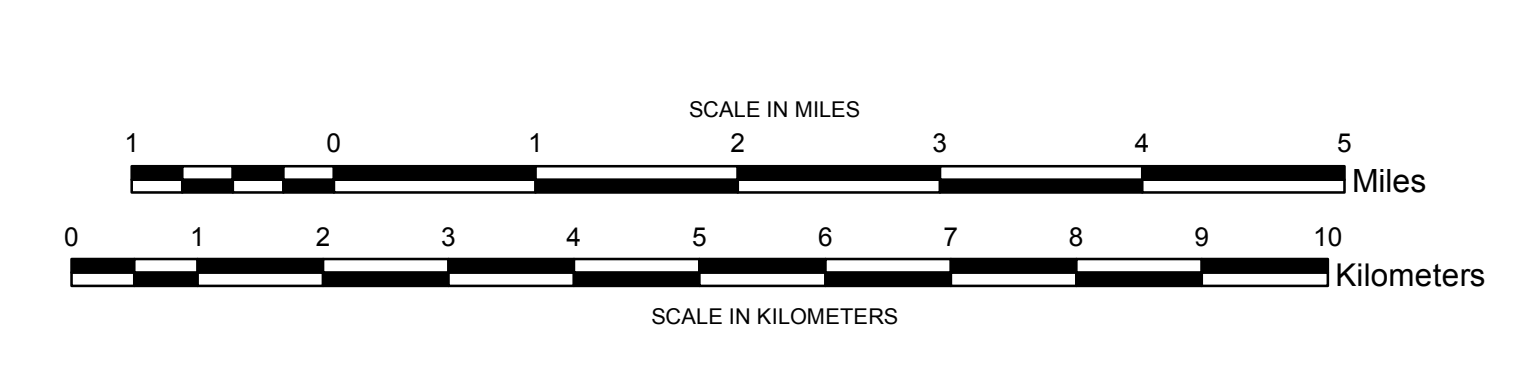
OKLAHOMA
 COMPUTER GENERATED
 1



Legend

- | | | | | | |
|--|----------------------------|--|-----------------|--|--------------------------|
| | State Highway | | Asphalt | | State Line |
| | US Highway | | Concrete | | County Line |
| | Bridge | | Gravel | | Section Line |
| | Low Water Crossing | | Grade & Drain | | Corporate Limit |
| | Natural Elevation Point | | Unimproved | | Wildlife Management Area |
| | Natural Elevation Point | | Railroad | | Wildlife Refuge |
| | Divided Highway - Asphalt | | River or Stream | | Lake or Reservoir |
| | Divided Highway - Concrete | | | | |

ALL DATA CURRENT AS OF DATE LISTED BELOW
 October 2, 2018



**GENERAL HIGHWAY MAP
 ADAIR COUNTY
 OKLAHOMA**
 PREPARED BY THE
 OKLAHOMA DEPARTMENT OF TRANSPORTATION
 STRATEGIC ASSET AND PERFORMANCE
 MANAGEMENT DIVISION
 IN COOPERATION WITH THE
 U.S. DEPARTMENT OF TRANSPORTATION
 FEDERAL HIGHWAY ADMINISTRATION

LAMBERT CONFORMAL CONIC PROJECTION U.S. & GEODETIC SURVEY DATA
 20,000 FOOT GRID; OKLAHOMA PLANE COORDINATE SYSTEM NORTH PROJECTION ZONE
 POPULATION FIGURES BASED ON 2010 U.S. CENSUS
 CD: POP 12.693