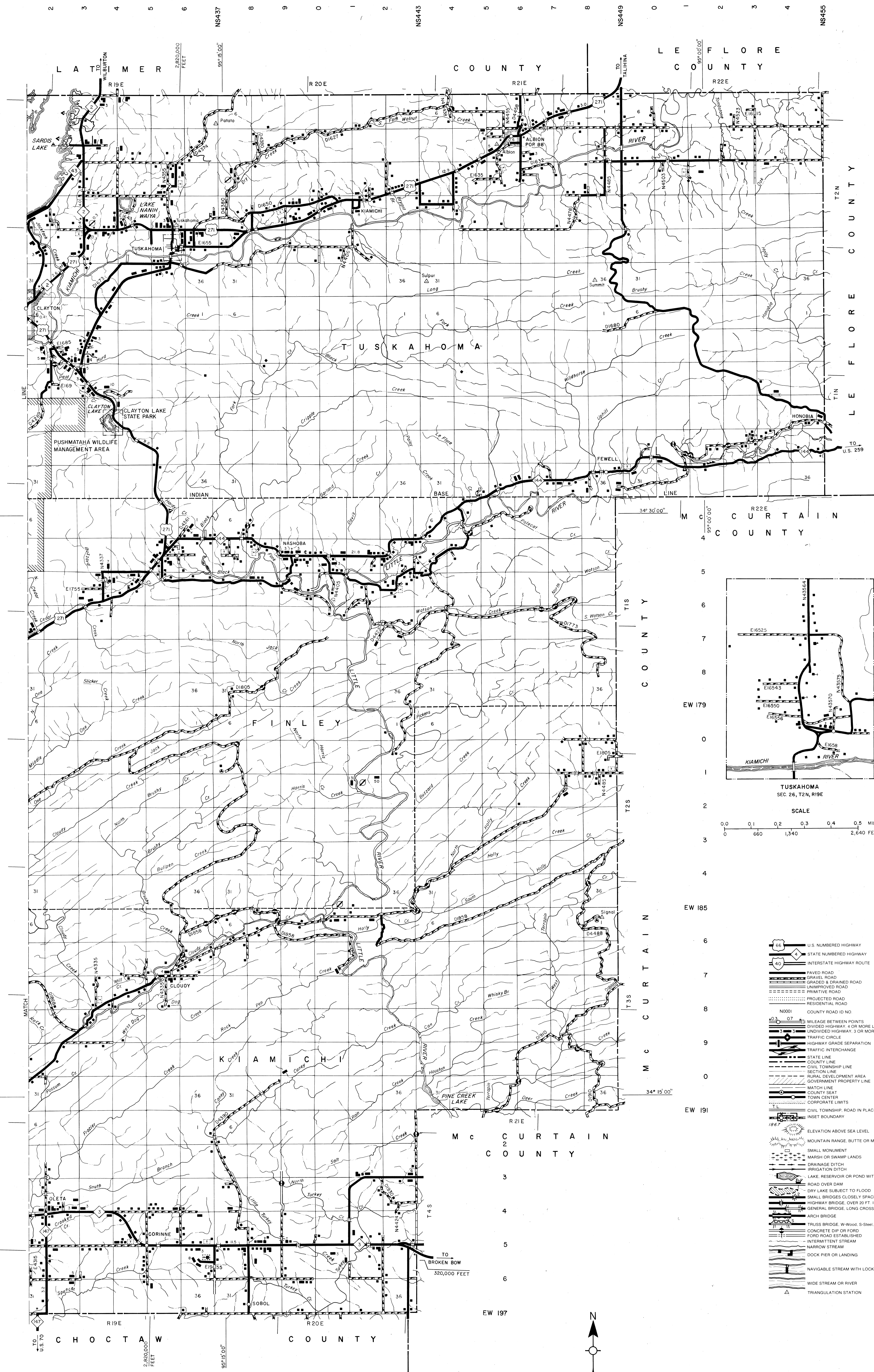
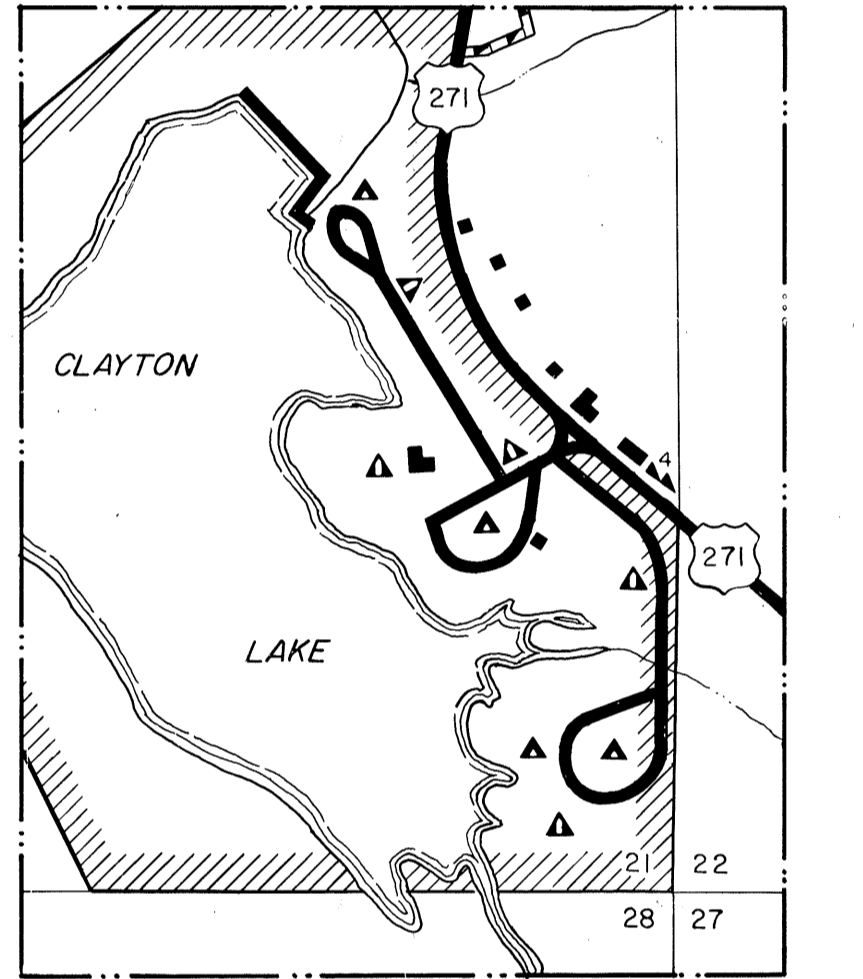
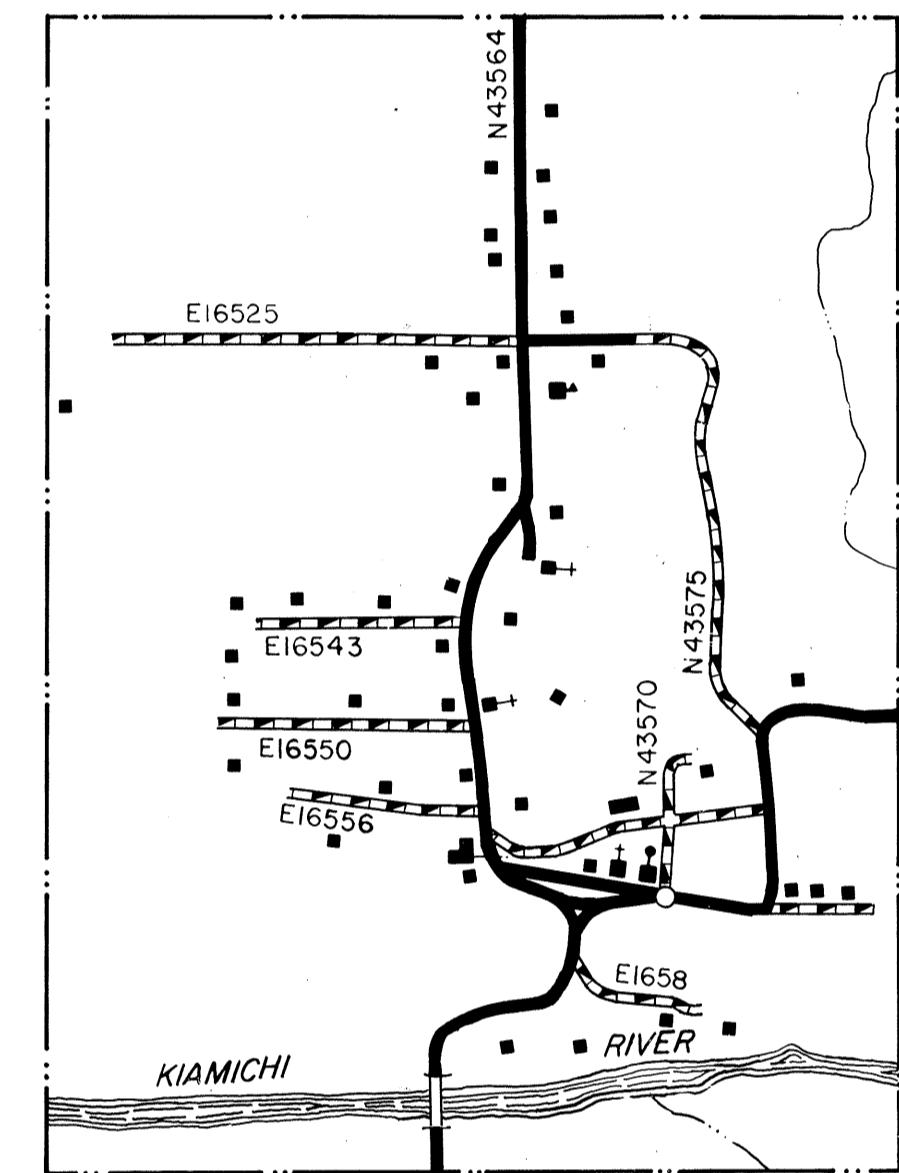


NOT FOR RESALE

This map includes those roads known to the Department to be open to public use. It does not include roads that are not open to public use. It is the responsibility of the user to determine the status of any road shown on this map. The Department of Transportation is not responsible for any errors or omissions on this map. The Department of Transportation is not responsible for any damage or injury resulting from the use of this map. The Department of Transportation is not responsible for any loss of property or other damage resulting from the use of this map. The Department of Transportation is not responsible for any other damage or injury resulting from the use of this map.

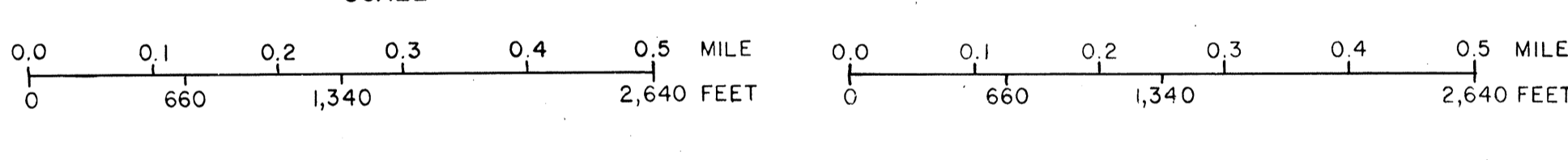


EW 161  
2  
3  
4  
5  
6  
EW 167  
8  
9  
0  
1  
2  
EW 173



TUSKAHOMA  
SEC. 26, T2N, R9E

CLAYTON LAKE STATE PARK  
SEC. 21, T1N, R9E



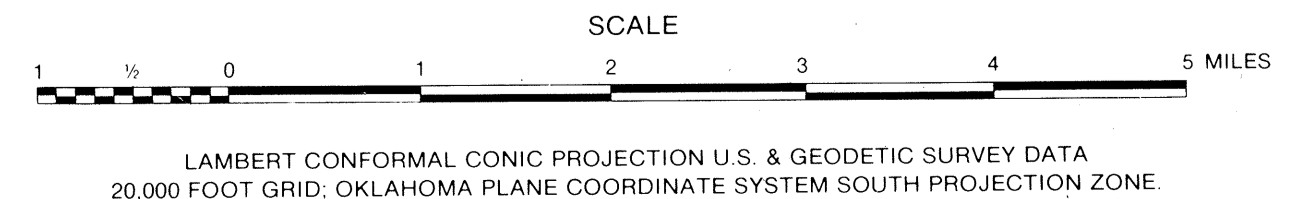
LEGEND

- U.S. NUMBERED HIGHWAY
- STATE NUMBERED HIGHWAY
- INTERSTATE HIGHWAY ROUTE
- PAVED ROAD
- GRAVEL ROAD
- UNIMPROVED ROAD
- PRIMITIVE ROAD
- PROJECTED ROAD
- RESIDENTIAL ROAD
- COUNTY ROAD ID NO.
- MILEAGE BETWEEN POINTS
- DIVIDED HIGHWAY - 4 OR MORE LANES
- UNDIVIDED HIGHWAY - 3 OR MORE LANES
- UNDIVIDED HIGHWAY - 2 LANES
- TRAFFIC CIRCLE
- HIGHWAY GRADE SEPARATION
- TRAFFIC INTERCHANGE
- STATE LINE
- COUNTY LINE
- CIVIL TOWNSHIP LINE
- RURAL DEVELOPMENT AREA
- GOVERNMENT PROPERTY LINE
- MATCH LINE
- COUNTY SEAT
- TOWN CENTER
- CORPORATE LIMITS
- CIVIL TOWNSHIP ROAD IN PLACE
- INSET BOUNDARY
- ELEVATION ABOVE SEA LEVEL
- MOUNTAIN RANGE, BUTTE OR MESA
- SMALL MONUMENT
- MARSH OR SWAMP LANDS
- DRAINAGE SWITCH
- IRRIGATION DITCH
- LAKE, RESERVOIR OR POND WITH DAM
- ROAD OVER DAM
- DRY LAKE SUBJECT TO FLOOD
- SMALL BRIDGES CLOSELY SPACED
- HIGHWAY BRIDGE OVER 20 FT. IN LENGTH
- GENERAL BRIDGE LONG CROSSING
- ARCH BRIDGE
- TRUSS BRIDGE, W-Wood, S-Steel, C-Concrete
- CONCRETE DIP OR FORD
- FORD ROAD ESTABLISHED
- INTERMITTENT STREAM
- NARROW STREAM
- DOCK, PIER OR LANDING
- NAVIGABLE STREAM WITH LOCK & DAM
- WIDE STREAM OR RIVER
- TRIANGULATION STATION
- RAILROAD ANY NUMBER OF TRACKS
- RAILROAD WITH STATIONS INDICATED
- GRADE CROSSING
- UNDERPASS, S.R. ABOVE
- OVERPASS, R.R. BELOW
- RAILROAD ON STREET
- MILITARY AIRFIELD
- AIRPORT WITH COMPLETE FACILITIES
- AIRPORT WITH LIMITED FACILITIES
- LANDING STRIP, PRIVATE FIELD
- CAMP SITE
- AIRPORT - GENERAL OUTLINE OF FIELD
- ROADSIDE PARK
- PUBLIC GROUNDS
- PLAYGROUNDS
- BATHING BEACH OR SWIMMING POOL
- SCENIC SITE
- CAMP OR LODGE, Permanent With Buildings
- MOTEL
- SMALL PARK
- 20-50 Acre, CP County
- 100-500 Acre, CP County
- FOREST RANGER STATION
- OBSERVATION OR LOOKOUT TOWER
- CAMP SITE
- FISH HATCHERY
- GOLF COURSE OR COUNTRY CLUB
- ATHLETIC FIELD OR AMUSEMENT PARK
- FAIRGROUNDS, RACE COURSE
- DWELLING
- NUMBER OF DWELLINGS CLOSELY SPACED
- COMBINED BUSINESS AND DWELLING
- POST OFFICE
- POST OFFICE COMBINATIONS
- SEASONAL DWELLINGS
- CHURCH OR OTHER RELIGIOUS BUILDING
- CEMETERY
- CHURCH WITH CEMETERY ADJACENT
- REST HOME
- HOSPITAL
- SMALL BUSINESS
- INDUSTRY
- SAW MILL
- MINE SHAFT OR DRIFT
- OIL OR GAS FIELD
- GASOLINE OR PUMPING STATION
- WAREHOUSE
- GRAVEL PIT
- QUARRY
- SCHOOL
- COMMUNITY HALL OR LODGE
- DRIVE-IN THEATER
- CORRECTIONAL INSTITUTION
- HIGHWAY GARAGE
- JUNK YARDS & CLUMPS
- A-Automobile, B-Scrap, C-Burning Material, D-Refuse, Garbage or Trash Dump, F-Sanitary Fill, G-Other
- WATER SUPPLY STAND PIPE
- POWER PLANT
- RODENTER STATION
- POWER SUBSTATION
- TELEVISION OR RADIO STATION
- MILITARY INSTALLATION

GENERAL HIGHWAY MAP  
**PUSHMATAHA COUNTY**  
OKLAHOMA

PREPARED BY THE  
OKLAHOMA DEPARTMENT OF TRANSPORTATION  
PLANNING DIVISION

IN COOPERATION WITH THE  
U.S. DEPARTMENT OF TRANSPORTATION  
FEDERAL HIGHWAY ADMINISTRATION



LAMBERT CONFORMAL CONIC PROJECTION U.S. & GEODETIC SURVEY DATA  
20,000 FOOT GRID, OKLAHOMA PLANE COORDINATE SYSTEM SOUTH PROJECTION ZONE  
POPULATION FIGURES BASED ON 1990 U.S. CENSUS  
CO. POP. 10,997

ALL DATA CURRENT TO  
DATE OF INVENTORY  
SEPT. 1991  
ORIGINAL DRAFTING BY R.G.R. AUG. 1993  
STATE SYSTEM REVISED TO MAR. 1998

