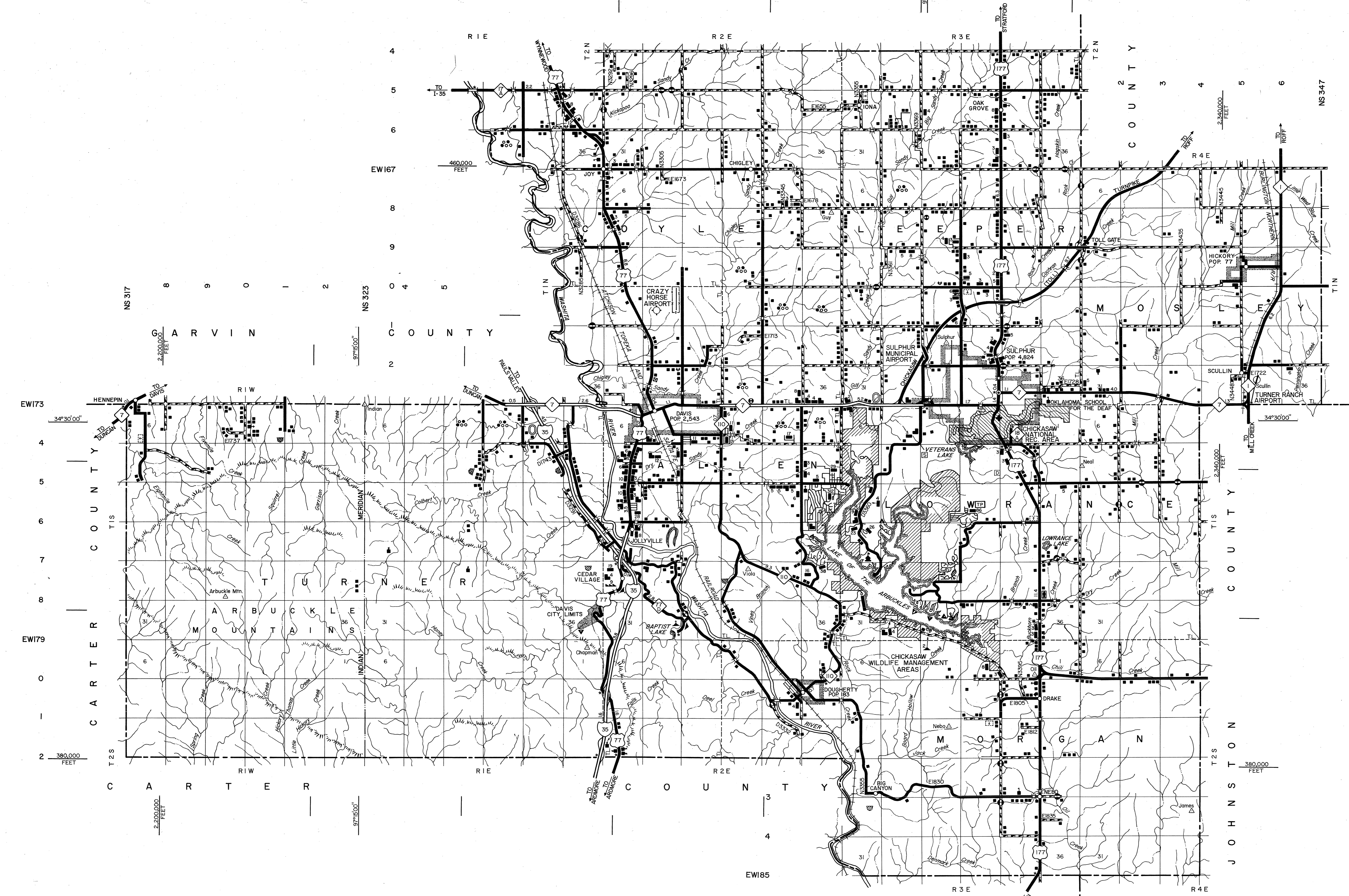
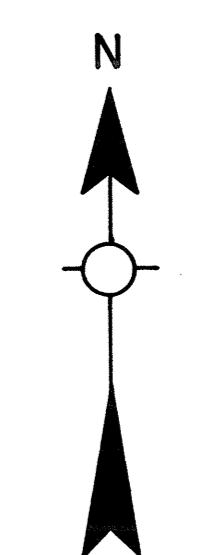
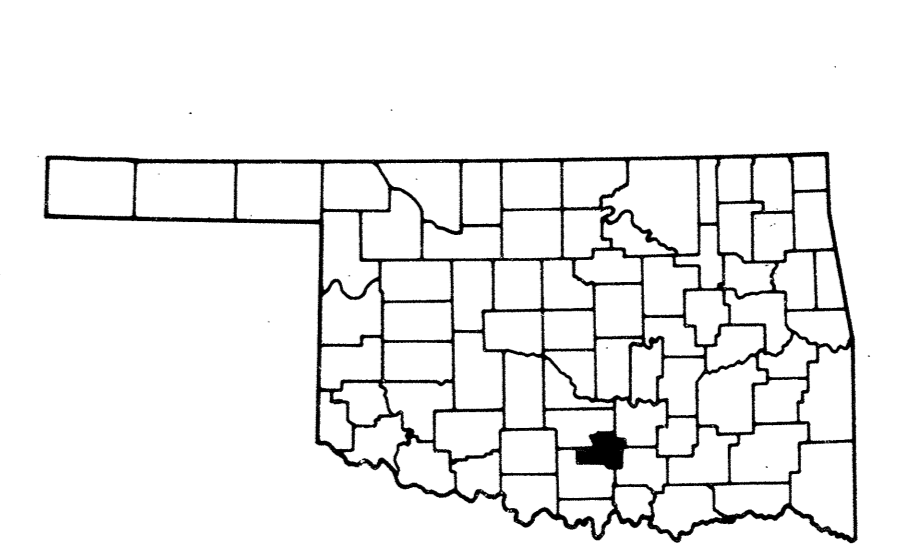


G A R V I N C O U N T Y



LEGEND

- U.S. NUMBERED HIGHWAY
- STATE NUMBERED HIGHWAY
- INTERSTATE HIGHWAY ROUTE
- PAVED ROAD
- GRAVEL ROAD
- GRADED & DRAINED ROAD
- UNIMPROVED ROAD
- PRIMITIVE ROAD
- PROJECTED ROAD
- RESIDENTIAL ROAD
- RAILROAD, ANY NUMBER OF TRACKS
- RAILROAD WITH STATIONS INDICATED
- GRADE CROSSING
- UNDERPASS, R.R. ABOVE
- OVERPASS, R.R. BELOW
- RAILROAD ON STREET
- MILITARY AIRFIELD
- AIRPORT WITH COMPLETE FACILITIES
- AIRPORT WITH LIMITED FACILITIES
- LANDING STRIP, PRIVATE FIELD
- AIRPORT, GENERAL OUTLINE OF FIELD
- RUNWAYS SHOWN IN POSITION
- ROADSIDE PARK, Picnic Grounds
- PLAYGROUNDS
- BATHING BEACH OR SWIMMING POOL
- SCENIC SITE
- MOTEL
- CAMP OR LODGE, Permanent With Buildings
- SMALL PARK, SP, State, CP, County
- MP, Municipal, TP, Trailer Park
- FOREST RANGER STATION
- OBSERVATION OR LOOKOUT TOWER
- CAMP SITE
- FISH HATCHERY
- GOLF COURSE OR COUNTRY CLUB
- ATHLETIC FIELD OR AMUSEMENT PARK
- FAIRGROUNDS, RACE COURSE
- DWELLING
- NUMBER OF DWELLINGS CLOSELY SPACED
- COMBINED BUSINESS AND DWELLING
- POST OFFICE
- POST OFFICE COMBINATIONS
- SEASONAL DWELLINGS
- CHURCH OR OTHER RELIGIOUS BUILDING
- CEMETERY
- CHURCH WITH CEMETERY ADJACENT
- REST HOME
- HOSPITAL
- SMALL BUSINESS
- INDUSTRY
- SAW MILL
- MINE SHAFT OR DRIFT
- OIL OR GAS FIELD
- GALVANIZING OR PUMPING STATION
- WAREHOUSE
- GRAVEL PIT
- QUARRY
- SCHOOL
- COMMUNITY HALL OR LODGE
- DRIVE-IN THEATER
- CORRECTIONAL INSTITUTION
- HIGHWAY GARAGE
- JUNK YARDS & DUMPS, A, Automobile, B, Store Building Material, C, Refuse, Garbage or Trash Dump
- D, Refuse, Garbage or Trash Dump
- F, Battery Pile, G, Other
- SEWAGE DISPOSAL PLANT
- WATER SUPPLY STAND PIPE
- POWER PLANT
- BOOSTER STATION
- POWER SUBSTATION
- TELEVISION OR RADIO STATION
- MILITARY INSTALLATION
- TRANGULATION STATION



ALL DATA CURRENT TO DATE OF INVENTORY JUNE 1990 ORIGINAL DRAFTING BY L.R.K. DEC. 1993 STATE SYSTEM REVISED TO JAN. 1994

GENERAL HIGHWAY MAP MURRAY COUNTY OKLAHOMA

PREPARED BY THE OKLAHOMA DEPARTMENT OF TRANSPORTATION PLANNING DIVISION

IN COOPERATION WITH THE U.S. DEPARTMENT OF TRANSPORTATION FEDERAL HIGHWAY ADMINISTRATION

SCALE 1 2 3 4 5 MILES

LAMBERT CONFORMAL CONIC PROJECTION U.S. & GEODETIC SURVEY DATA 20,000 FOOT GRID, OKLAHOMA PLANE COORDINATE SYSTEM SOUTH PROJECTION ZONE POPULATION FIGURES BASED ON 1990 U.S. CENSUS CO. POP. 12,042

ALL RIGHTS RESERVED

This map indicates those roads known to the Department to be open to public travel. Placement of a road on the map has no relationship to maintenance responsibility by any level of government. Copies of this map are available for public use at nominal cost. Address: OKLAHOMA DEPARTMENT OF TRANSPORTATION REPRODUCTION BRANCH Phone (405) 521-2586 200 N.E. 21st STREET OKLAHOMA CITY, OKLAHOMA 73105

NOT FOR RESALE