

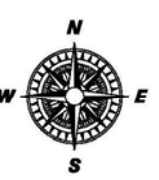
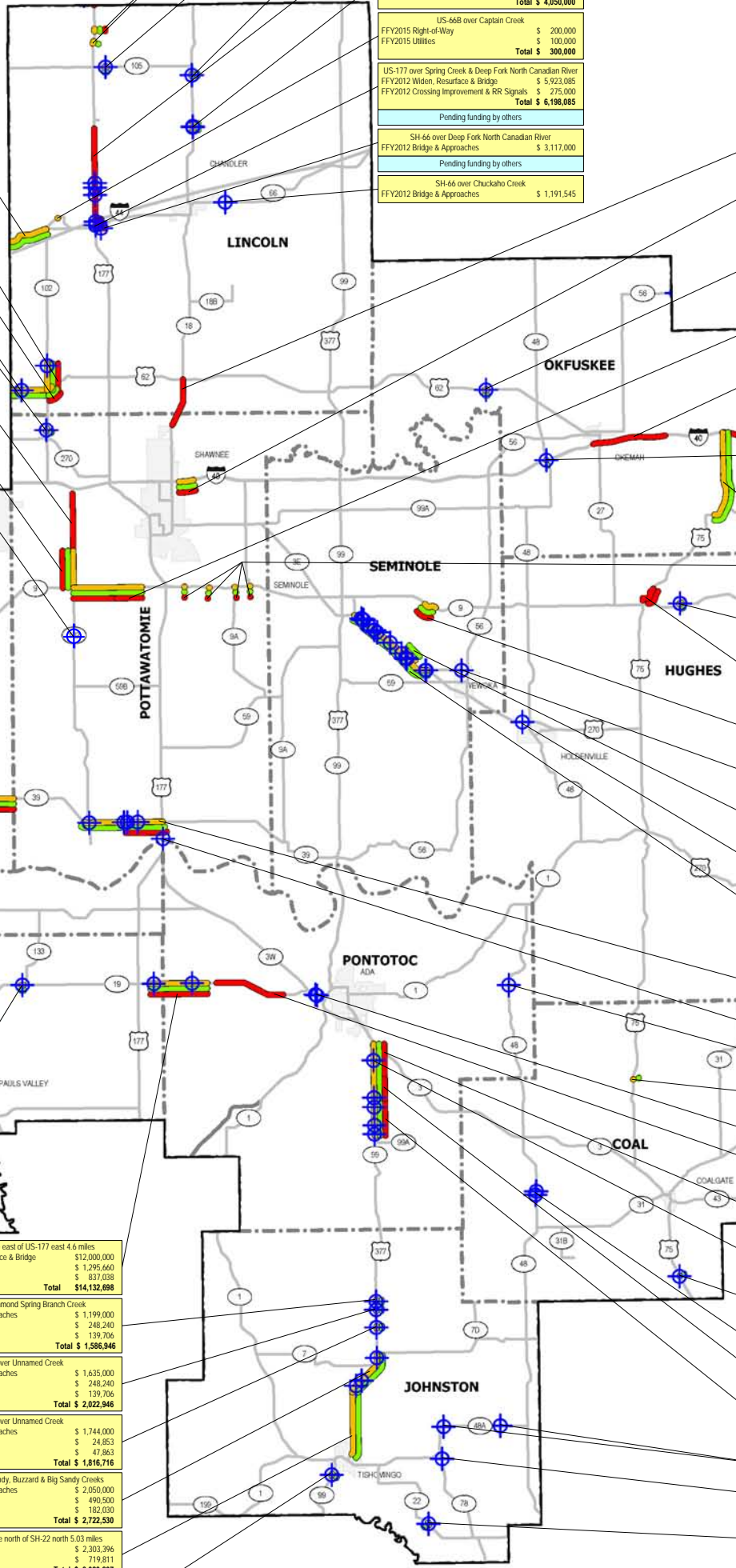
OKLAHOMA DEPARTMENT OF TRANSPORTATION

2011 to 2018 Construction Work Plan

Division 3

US-66 from Oklahoma CL east 3.25 miles	
FFY2016 Right-of-Way	\$ 400,000
FFY2016 Utilities	\$ 200,000
Total	\$ 600,000
US-42 from 0.86 mi. east of SH-102 east 42 mi	
FFY2011 Widen & Resurface	\$ 700,000
FFY2011 Right-of-Way	\$ 50,000
FFY2011 Utilities	\$ 50,000
Total	\$ 800,000
Pending funding by others	
SH-102 from US-62 north 2.1 miles	
FFY2015 Widen, Resurface & Bridge	\$ 3,600,000
FFY2011 Right-of-Way	\$ 1,463,630
FFY2011 Utilities	\$ 8,292
Total	\$ 5,071,922
US-42 from 0.42 mi. east of Oklahoma CL east 3.65 mi.	
FFY2015 Widen, Resurface & Bridge	\$ 7,950,000
FFY2011 Right-of-Way	\$ 3,858,380
FFY2011 Utilities	\$ 19,264
Total	\$ 11,827,744
SH-102 over North Canadian River	
FFY2014 Bridge & Approaches	\$ 5,199,300
FFY2011 Right-of-Way	\$ 406,850
FFY2011 Utilities	\$ 43,775
Total	\$ 5,649,925
SH-102 from 3.06 mi. N. of SH-9 north to 35 mi. S. of I-40	
FFY2014 Widen & Resurface	\$ 12,644,000
SH-102 from SH-9 north 3.06 miles	
FFY2017 Widen & Resurface	\$ 9,625,000
FFY2013 Right-of-Way	\$ 490,500
FFY2013 Utilities	\$ 327,000
Total	\$ 10,442,500
SH-102 over Unnamed Creek	
FFY2011 Bridge & Approaches	\$ 264,538
SH-9 from 72nd to 108th	
FFY2018 Right-of-Way	\$ 600,000
FFY2018 Utilities	\$ 300,000
Total	\$ 900,000
SH-9 from 36th east to 72nd	
FFY2015 Grade, Drain, Bridge, & Surface	\$ 9,633,028
FFY2011 Right-of-Way	\$ 1,531,983
FFY2011 Utilities	\$ 1,617,983
Total	\$ 12,782,994
SH-9 from 24th east to 36th	
FFY2013 Grade, Drain, Bridge, & Surface	\$ 3,675,000
FFY2011 Right-of-Way	\$ 608,645
FFY2011 Utilities	\$ 642,778
Total	\$ 4,926,423
I-35 at Robinson Street Ramp	
FFY2011 Grade, Drain & Surface	\$ 2,610,000
Pending funding by others	
I-35 from River north to Main Street	
FFY2011 Safety Improvement (Soundwalks)	\$ 4,000,000
FFY2012 Grade, Drain & Bridge	\$ 22,145,000
FFY2013 Grade, Drain & Bridge	\$ 12,826,000
FFY2013 Grade & Drain	\$ 5,300,000
FFY2014 Grade, Drain & Bridge	\$ 26,051,000
FFY2015 Grade, Drain & Surface	\$ 11,600,000
FFY2016 Grade, Drain & Bridge	\$ 14,700,000
FFY2017 Grade, Drain & Surface	\$ 8,400,000
FFY2011 Utilities	\$ 1,700,000
FFY2012 Right-of-Way	\$ 1,030,000
FFY2012 Utilities	\$ 2,369,000
Total	\$ 110,121,000
Western Ave. from Tecumseh Rd. north to OKC CL	
FFY2011 Grade, Drain, Bridge & Surface	\$ 4,500,000
I-35 over South Canadian River	
FFY2013 Bridge Rehabilitation	\$ 19,600,000
FFY2011 Right-of-Way	\$ 750,000
FFY2011 Utilities	\$ 250,000
Total	\$ 20,600,000
I-35 Southbound Ramp at SH-74	
FFY2016 Grade, Drain & Surface	\$ 900,000
I-35/SH-9 Interchange	
FFY2016 Interchange	\$ 7,175,000
FFY2012 Right-of-Way	\$ 10,600,000
FFY2012 Utilities	\$ 225,000
Total	\$ 18,000,000
Not fully funded	
I-35 under Ladd Road	
FFY2016 Grade, Drain & Surface	\$ 2,000,000
SH-76 over North Fork Walnut Creek	
FFY2016 Bridge & Approaches	\$ 1,900,000
FFY2012 Right-of-Way	\$ 206,000
FFY2012 Utilities	\$ 103,000
Total	\$ 2,209,000
SH-76 over Walnut Creek	
FFY2016 Grade, Drain, Bridge & Surface	\$ 4,800,000
FFY2013 Right-of-Way	\$ 386,490
FFY2013 Utilities	\$ 661,887
Total	\$ 5,848,377
US-77 from 7.4 miles north of SH-39 north 3.25 miles	
FFY2016 Grade, Drain, Bridge & Surface	\$ 15,250,000
US-77 from 4.05 miles north of SH-39 north 2.5 miles	
FFY2012 Grade, Drain & Surface	\$ 8,858,000
SH-39 from Grady CL east 1 mile	
FFY2018 Grade, Drain & Surface	\$ 2,400,000
FFY2016 Right-of-Way	\$ 200,000
FFY2016 Utilities	\$ 150,000
Total	\$ 2,750,000
US-77 from SH-39 north 4.05 miles	
FFY2018 Grade, Drain, Bridge, & Surface	\$ 15,000,000
SH-39 from 1.78 miles east of SH-24 east to US-77	
FFY2011 Widen, Resurface & Bridge	\$ 10,857,282
US-77 over South Canadian River	
FFY2017 Right-of-Way	\$ 750,000
FFY2017 Utilities	\$ 250,000
Total	\$ 1,000,000
SH-76 from SH-19 north 8 miles	
FFY2015 Grade, Drain, Bridge & Surface	\$ 9,000,000
FFY2012 Right-of-Way	\$ 4,017,000
FFY2012 Utilities	\$ 401,700
FFY2018 Right-of-Way	\$ 3,000,000
FFY2018 Utilities	\$ 850,000
Total	\$ 17,268,700
SH-76 over Washita River	
FFY2018 Bridge & Approaches	\$ 4,000,000
FFY2015 Right-of-Way	\$ 350,000
FFY2015 Utilities	\$ 150,000
Total	\$ 4,500,000
SH-39 from 2 miles east of US-77 jct. east 5 miles	
FFY2016 Widen, Resurface & Bridge	\$ 8,525,000
FFY2011 Right-of-Way	\$ 819,864
FFY2011 Utilities	\$ 777,359
Total	\$ 10,122,043
SH-74 over Washita River	
FFY2015 Right-of-Way	\$ 350,000
FFY2015 Utilities	\$ 150,000
Total	\$ 500,000
SH-74 over Beef Creek	
FFY2017 Bridge & Approaches	\$ 1,242,600
FFY2014 Right-of-Way	\$ 442,540
FFY2014 Utilities	\$ 143,880
Total	\$ 1,829,020
SH-39 from 7 miles east of US-77 jct. east 4.43 miles	
FFY2018 Widen, Resurface & Bridge	\$ 8,300,000
FFY2016 Right-of-Way	\$ 747,389
FFY2016 Utilities	\$ 540,000
Total	\$ 9,587,389
SH-74 over Rush, Overflow, Lighting, and Unnamed Creeks	
FFY2012 Bridge & Approaches	\$ 4,770,000
US-77 over Owl Creek	
FFY2017 Bridge & Approaches	\$ 1,401,700
FFY2014 Right-of-Way	\$ 40,330
FFY2014 Utilities	\$ 12,099
Total	\$ 1,454,129
I-35 from SH-19 north 3.21 miles	
FFY2015 Resurface	\$ 7,200,000
SH-76 over Unnamed Creek (In Division 7)	
FFY2013 Bridge & Approaches	\$ 1,749,000
SH-74 over Unnamed Creek	
FFY2014 Bridge & Approaches	\$ 1,199,000
FFY2011 Right-of-Way	\$ 248,230
FFY2011 Utilities	\$ 139,706
Total	\$ 1,586,936
SH-74 over Unnamed Creek	
FFY2013 Bridge & Approaches	\$ 2,594,199
SH-19 over Washita River	
FFY2014 Grade, Drain, Bridge & Surface	\$ 6,894,250
FFY2011 Right-of-Way	\$ 248,240
FFY2011 Utilities	\$ 139,707
Total	\$ 7,282,197
SH-19 over Little Peavine Creek	
FFY2017 Bridge & Approaches	\$ 1,086,800
FFY2014 Right-of-Way	\$ 152,560
FFY2014 Utilities	\$ 93,740
Total	\$ 1,333,100
US-77 over Washita River	
FFY2015 Right-of-Way	\$ 350,000
FFY2015 Utilities	\$ 150,000
Total	\$ 500,000

Note: The depicted information is based on project data currently available. Project estimates and schedules will remain subject to further refinement as more definitive data becomes available.



US-177 at Intersections of EW-75 & EW-76	
FFY2012 Intersection Modification	\$ 700,000
FFY2011 Right-of-Way	\$ 100,000
FFY2011 Utilities	\$ 200,000
Total	\$ 1,000,000
Pending funding by others	
SH-105 over Headquarters Creek	
FFY2017 Bridge & Approaches	\$ 1,847,600
FFY2014 Right-of-Way	\$ 55,590
FFY2014 Utilities	\$ 51,993
Total	\$ 1,955,183
SH-18 over West Beaver Creek	
FFY2014 Bridge & Approaches	\$ 2,488,470
FFY2011 Right-of-Way	\$ 64,890
FFY2011 Utilities	\$ 152,852
Total	\$ 2,706,212
US-177 from .74 miles north of SH-66 north 7.25 miles	
FFY2015 Widen, Resurface & Bridge	\$ 17,000,000
SH-18 over Dry Creek & Overflow	
FFY2018 Bridge & Approaches	\$ 3,800,000
FFY2015 Right-of-Way	\$ 150,000
FFY2015 Utilities	\$ 100,000
Total	\$ 4,050,000
US-668 over Captain Creek	
FFY2015 Right-of-Way	\$ 200,000
FFY2015 Utilities	\$ 100,000
Total	\$ 300,000
Pending funding by others	
US-177 over Spring Creek & Deep Fork North Canadian River	
FFY2012 Widen, Resurface & Bridge	\$ 5,923,085
FFY2012 Crossing Improvement & RR Signals	\$ 275,000
Total	\$ 6,198,085
Pending funding by others	
SH-66 over Deep Fork North Canadian River	
FFY2012 Bridge & Approaches	\$ 3,117,000
Pending funding by others	
SH-66 over Chuchok Creek	
FFY2012 Bridge & Approaches	\$ 1,191,545

SH-18 from EW-108 north 3.85 miles to US-42 jct.	
FFY2011 Widen & Resurface	\$ 9,653,204
I-40 Ingress/Egress Improvement at mile marker 187	
FFY2012 Interchange	\$ 2,400,000
FFY2011 Right-of-Way	\$ 140,000
FFY2011 Utilities	\$ 140,000
Total	\$ 5,900,000
Pending funding by others	
SH-9 over Bailey Creek	
FFY2018 Bridge & Approaches	\$ 2,000,000
FFY2015 Right-of-Way	\$ 200,000
FFY2015 Utilities	\$ 100,000
Total	\$ 2,300,000
SH-9 from SH-102 jct. east 5.49 miles	
FFY2017 Grade, Drain & Surface	\$ 7,950,000
FFY2018 Grade, Drain & Surface	\$ 10,500,000
FFY2015 Right-of-Way	\$ 1,800,000
FFY2015 Utilities	\$ 1,000,000
Total	\$ 21,250,000
I-40 from 8 miles east of Seminole CL east 5.86 miles	
FFY2018 Resurface	\$ 8,000,000
I-40 from US-75 east to Okmulgee CL	
FFY2017 Pavement Rehabilitation	\$ 8,000,000
SH-48 over I-40	
FFY2017 Bridge & Approaches	\$ 3,954,900
FFY2014 Right-of-Way	\$ 28,340
FFY2004 Utilities	\$ 23,326
Total	\$ 4,006,566
US-75 from Seminole Ave in Weleetka north 7.1 miles	
FFY2017 Right-of-Way	\$ 1,495,550
FFY2017 Utilities	\$ 2,000,550
Total	\$ 3,544,100
SH-9 Intersection Improvements	
FFY2013 Intersection Modification	\$ 1,250,000
FFY2011 Right-of-Way	\$ 250,000
FFY2011 Utilities	\$ 150,000
Total	\$ 1,650,000
SH-9 over Weverka Creek	
FFY2017 Bridge & Approaches	\$ 4,799,000
FFY2017 Right-of-Way	\$ 220,480
FFY2013 Utilities	\$ 74,412
Total	\$ 5,093,892
US-75 from Weleetka northeast 1.58 miles	
FFY2011 Grade, Drain, Bridge & Surface	\$ 9,527,500
FFY2011 Crossing Improvement & RR Signals	\$ 235,719
Total	\$ 9,763,219
SH-9 from 8.58 miles east of SH-3E east 1 mile	
FFY2017 Grade, Drain & Surface	\$ 1,846,400
FFY2013 Right-of-Way	\$ 187,000
FFY2013 Utilities	\$ 205,100
Total	\$ 2,238,500
US-270B over Unnamed Creek	
FFY2012 Bridge & Approaches	\$ 1,686,831
US-270 over Weverka Creek & Railroad	
FFY2016 Bridge & Approaches	\$ 6,700,000
FFY2013 Right-of-Way	\$ 404,764
FFY2013 Utilities	\$ 333,182
Total	\$ 7,437,946
US-270 over Abandoned Railroad	
FFY2014 Bridge & Approaches	\$ 2,616,000
US-270 over Carter & 9 Unnamed Creeks	
FFY2018 Bridge & Approaches	\$ 4,000,000
FFY2016 Right-of-Way	\$ 1,737,946
FFY2016 Utilities	\$ 650,000
Total	\$ 6,387,946
Not fully funded	
SH-39 from 6.5 miles east of Cleveland CL east 6.4 miles	
FFY2015 Widen, Resurface & Bridge	\$ 187,000
FFY2014 Right-of-Way	\$ 1,295,660
FFY2014 Utilities	\$ 31,886
Total	\$ 1,514,546
SH-3W over South Canadian River	
FFY2014 Bridge & Approaches	\$ 15,260,000
SH-48 over Sincere Creek	
FFY2011 Bridge & Approaches	\$ 1,714,972
US-75 over Rock Creek	
FFY2015 Right-of-Way	\$ 200,000
FFY2015 Utilities	\$ 100,000
Total	\$ 300,000
SH-19 over Big Sandy Creek	
FFY2016 Bridge Rehabilitation	\$ 2,000,000
SH-19 from 4.3 miles east of Garvin CL east 5.61 mile	
FFY2013 Widen & Resurface	\$ 13,432,740
SH-99 from 3.5 mile north to SH-99A	
FFY2017 Widen & Resurface	\$ 4,200,000
FFY2018 Widen & Resurface	\$ 3,560,000
FFY2015 Right-of-Way	\$ 802,075
FFY2015 Utilities	\$ 1,465,330
Total	\$ 10,027,405
SH-99 over Clear Boggy Creek	
FFY2012 Bridge & Approaches	\$ 1,378,000
US-75 over Coal Creek	
FFY2016 Bridge & Approaches	\$ 1,550,500
FFY2013 Right-of-Way	\$ 163,500
FFY2013 Utilities	\$ 109,000
Total	\$ 1,823,000
SH-48 over Clear Boggy Creek	
FFY2013 Bridge & Approaches	\$ 5,150,250
SH-99 over Bois D'Arc Creek	
FFY2011 Bridge & Approaches	\$ 757,050
SH-99 over Walnut & 2 Unnamed Creeks	
FFY2016 Widen, Resurface & Bridge	\$ 6,675,000
FFY2013 Right-of-Way	\$ 495,802
FFY2013 Utilities	\$ 758,158
Total	\$ 7,928,960
SH-48A over Little Sandy & Unnamed Creeks	
FFY2013 Bridge & Approaches	\$ 3,733,250
SH-78 over Brushy Creek	
FFY2011 Bridge & Approaches	\$ 3,615,300
SH-22 over Butcher Pen Creek	
FFY2017 Bridge & Approaches	\$ 1,751,600
FFY2014 Right-of-Way	\$ 49,050
FFY2014 Utilities	\$ 70,087
Total	\$ 1,870,737

