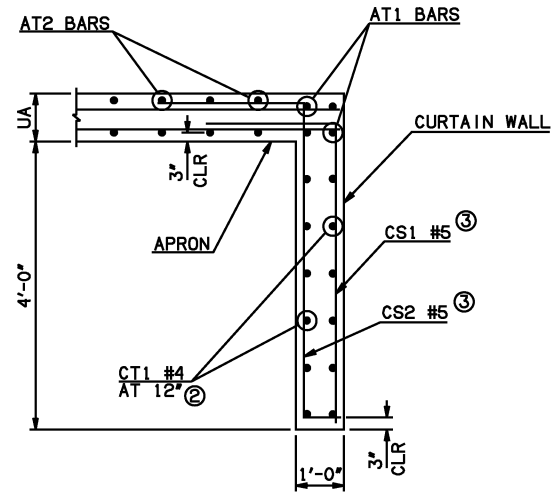


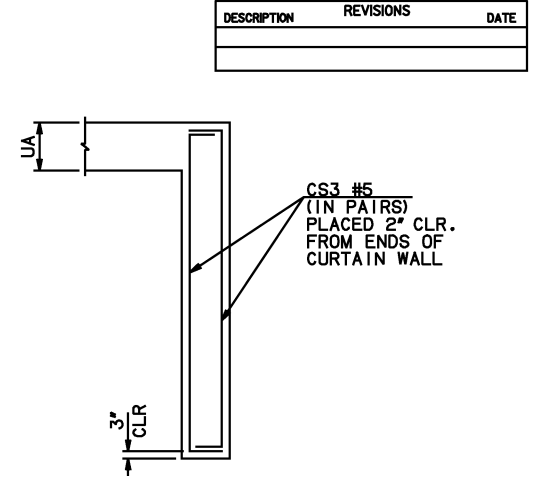
SECTION ① DIMENSIONS			REINFORCING STEEL									
S	H	UA	CS1-#5 AT 12" MAX		CS2-#5 AT 12" MAX		CS3-#5 BARS			CT1-#4 AT 12"		
QTY	LENGTH	QTY	*M*	LENGTH	QTY	*M*	LENGTH	QTY	*M*	LENGTH	QTY	LENGTH
3'	2'	8"	17	5'-9"	17	4'-3"	6'-8"	4	4'-3"	5'-7"	8	17'-2"
3'	3'	8"	21	5'-9"	21	4'-3"	6'-8"	4	4'-3"	5'-7"	8	20'-8"
4'	2'	8"	18	5'-9"	18	4'-3"	6'-8"	4	4'-3"	5'-7"	8	18'-2"
4'	3'	8"	22	5'-9"	22	4'-3"	6'-8"	4	4'-3"	5'-7"	8	21'-8"
4'	4'	10"	24	5'-9"	24	4'-5"	6'-10"	4	4'-5"	5'-9"	8	25'-2"
5'	2'	8"	19	5'-9"	19	4'-3"	6'-8"	4	4'-3"	5'-7"	8	19'-2"
5'	3'	8"	23	5'-9"	23	4'-3"	6'-8"	4	4'-3"	5'-7"	8	22'-8"
5'	4'	10"	25	5'-9"	25	4'-5"	6'-10"	4	4'-5"	5'-9"	8	26'-2"
5'	5'	10"	29	5'-9"	29	4'-5"	6'-10"	4	4'-5"	5'-9"	8	30'-0"
5'	7'	11"	37	5'-9"	37	4'-6"	6'-11"	4	4'-6"	5'-10"	8	37'-4"
6'	3'	8"	26	5'-9"	26	4'-3"	6'-8"	4	4'-3"	5'-7"	8	23'-8"
6'	4'	10"	26	5'-9"	26	4'-5"	6'-10"	4	4'-5"	5'-9"	8	27'-2"
6'	5'	10"	30	5'-9"	30	4'-5"	6'-10"	4	4'-5"	5'-9"	8	31'-0"
6'	6'	11"	34	5'-9"	34	4'-6"	6'-11"	4	4'-6"	5'-10"	8	34'-8"
8'	3'	8"	26	5'-9"	26	4'-3"	6'-8"	4	4'-3"	5'-7"	8	25'-8"
8'	4'	10"	28	5'-9"	28	4'-5"	6'-10"	4	4'-5"	5'-9"	8	29'-2"
8'	5'	10"	32	5'-9"	32	4'-5"	6'-10"	4	4'-5"	5'-9"	8	33'-0"
8'	6'	11"	36	5'-9"	36	4'-6"	6'-11"	4	4'-6"	5'-10"	8	36'-8"
8'	7'	11"	40	5'-9"	40	4'-6"	6'-11"	4	4'-6"	5'-10"	8	40'-4"
8'	8'	12"	42	5'-9"	42	4'-7"	7'-0"	4	4'-7"	5'-11"	8	43'-10"
10'	3'	8"	30	5'-9"	30	4'-3"	6'-8"	4	4'-3"	5'-7"	8	27'-8"
10'	4'	10"	32	5'-9"	32	4'-5"	6'-10"	4	4'-5"	5'-9"	8	31'-2"
10'	5'	10"	36	5'-9"	36	4'-5"	6'-10"	4	4'-5"	5'-9"	8	35'-0"
10'	6'	11"	40	5'-9"	40	4'-6"	6'-11"	4	4'-6"	5'-10"	8	38'-8"
10'	7'	11"	44	5'-9"	44	4'-6"	6'-11"	4	4'-6"	5'-10"	8	42'-4"
10'	8'	12"	46	5'-9"	46	4'-7"	7'-0"	4	4'-7"	5'-11"	8	45'-10"
10'	9'	13"	50	5'-9"	50	4'-8"	7'-1"	4	4'-8"	6'-0"	8	49'-4"
10'	10'	13"	54	5'-9"	54	4'-8"	7'-1"	4	4'-8"	6'-0"	8	52'-10"
12'	4'	10"	34	5'-9"	34	4'-5"	6'-10"	4	4'-5"	5'-9"	8	33'-2"
12'	5'	10"	38	5'-9"	38	4'-5"	6'-10"	4	4'-5"	5'-9"	8	37'-0"
12'	6'	11"	42	5'-9"	42	4'-6"	6'-11"	4	4'-6"	5'-10"	8	40'-8"
12'	7'	11"	46	5'-9"	46	4'-6"	6'-11"	4	4'-6"	5'-10"	8	44'-4"
12'	8'	12"	48	5'-9"	48	4'-7"	7'-0"	4	4'-7"	5'-11"	8	47'-10"
12'	9'	13"	52	5'-9"	52	4'-8"	7'-1"	4	4'-8"	6'-0"	8	51'-4"
12'	10'	13"	56	5'-9"	56	4'-8"	7'-1"	4	4'-8"	6'-0"	8	54'-10"
12'	11'	14"	60	5'-9"	60	4'-9"	7'-2"	4	4'-9"	6'-1"	8	58'-4"
12'	12'	14"	62	5'-9"	62	4'-9"	7'-2"	4	4'-9"	6'-1"	8	64'-4"
14'	5'	10"	40	5'-9"	40	4'-5"	6'-10"	4	4'-5"	5'-9"	8	39'-0"
14'	6'	11"	44	5'-9"	44	4'-6"	6'-11"	4	4'-6"	5'-10"	8	42'-8"
14'	7'	11"	48	5'-9"	48	4'-6"	6'-11"	4	4'-6"	5'-10"	8	46'-4"
14'	8'	12"	50	5'-9"	50	4'-7"	7'-0"	4	4'-7"	5'-11"	8	49'-10"
14'	9'	13"	54	5'-9"	54	4'-8"	7'-1"	4	4'-8"	6'-0"	8	53'-4"
14'	10'	13"	58	5'-9"	58	4'-8"	7'-1"	4	4'-8"	6'-0"	8	56'-10"
14'	11'	14"	62	5'-9"	62	4'-9"	7'-2"	4	4'-9"	6'-1"	8	62'-10"
14'	12'	14"	64	5'-9"	64	4'-9"	7'-2"	4	4'-9"	6'-1"	8	66'-4"
16'	6'	11"	46	5'-9"	46	4'-6"	6'-11"	4	4'-6"	5'-10"	8	44'-8"
16'	7'	11"	50	5'-9"	50	4'-6"	6'-11"	4	4'-6"	5'-10"	8	48'-4"
16'	8'	12"	52	5'-9"	52	4'-7"	7'-0"	4	4'-7"	5'-11"	8	51'-10"
16'	9'	13"	56	5'-9"	56	4'-8"	7'-1"	4	4'-8"	6'-0"	8	55'-4"
16'	10'	13"	60	5'-9"	60	4'-8"	7'-1"	4	4'-8"	6'-0"	8	58'-10"
16'	11'	14"	64	5'-9"	64	4'-9"	7'-2"	4	4'-9"	6'-1"	8	64'-10"
16'	12'	14"	66	5'-9"	66	4'-9"	7'-2"	4	4'-9"	6'-1"	8	68'-4"
16'	15'	16"	76	5'-9"	76	4'-11"	7'-4"	4	4'-11"	6'-3"	8	78'-8"
18'	7'	11"	52	5'-9"	52	4'-6"	6'-11"	4	4'-6"	5'-10"	8	50'-4"
18'	8'	12"	54	5'-9"	54	4'-7"	7'-0"	4	4'-7"	5'-11"	8	53'-10"
18'	9'	13"	58	5'-9"	58	4'-8"	7'-1"	4	4'-8"	6'-0"	8	57'-4"
18'	10'	13"	62	5'-9"	62	4'-8"	7'-1"	4	4'-8"	6'-0"	8	63'-4"
18'	11'	14"	66	5'-9"	66	4'-9"	7'-2"	4	4'-9"	6'-1"	8	66'-10"
18'	12'	14"	68	5'-9"	68	4'-9"	7'-2"	4	4'-9"	6'-1"	8	70'-4"
18'	15'	16"	78	5'-9"	78	4'-11"	7'-4"	4	4'-11"	6'-3"	8	80'-8"
20'	8'	12"	56	5'-9"	56	4'-7"	7'-0"	4	4'-7"	5'-11"	8	55'-10"
20'	9'	13"	60	5'-9"	60	4'-8"	7'-1"	4	4'-8"	6'-0"	8	59'-4"
20'	10'	13"	64	5'-9"	64	4'-8"	7'-1"	4	4'-8"	6'-0"	8	65'-4"
20'	11'	14"	68	5'-9"	68	4'-9"	7'-2"	4	4'-9"	6'-1"	8	68'-10"
20'	12'	14"	70	5'-9"	70	4'-9"	7'-2"	4	4'-9"	6'-1"	8	72'-4"
20'	15'	16"	80	5'-9"	80	4'-11"	7'-4"	4	4'-11"	6'-3"	8	82'-8"
20'	17'	20"	88	5'-9"	88	5'-3"	7'-8"	4	5'-3"	6'-7"	8	89'-10"

QUANTITIES	
CONC. (C. Y.)	REINF. (LB.)
2.60	340.00
3.20	410.00
2.80	360.00
3.30	430.00
3.80	480.00
2.90	380.00
3.50	450.00
4.00	500.00
4.50	570.00
5.60	720.00
3.60	470.00
4.10	520.00
4.70	590.00
5.20	660.00
3.90	500.00
4.40	550.00
5.00	630.00
5.50	700.00
6.10	770.00
6.60	820.00
4.20	560.00
4.70	620.00
5.30	690.00
5.80	760.00
6.40	840.00
6.90	890.00
7.40	960.00
7.90	1040.00
5.00	650.00
5.60	730.00
6.10	800.00
6.70	870.00
7.20	920.00
7.70	1000.00
8.20	1070.00
8.70	1150.00
9.30	1210.00
5.90	760.00
6.40	840.00
7.00	910.00
7.50	960.00
8.00	1040.00
8.50	1110.00
9.00	1200.00
9.60	1250.00
6.70	880.00
7.30	950.00
7.80	1000.00
8.30	1080.00
8.80	1150.00
9.30	1240.00
9.90	1280.00
11.40	1490.00
7.60	980.00
8.10	1040.00
8.60	1110.00
9.10	1200.00
9.60	1280.00
10.10	1320.00
11.70	1530.00
8.40	1070.00
8.90	1150.00
9.40	1240.00
9.90	1310.00
10.40	1360.00
12.00	1560.00
13.00	1740.00

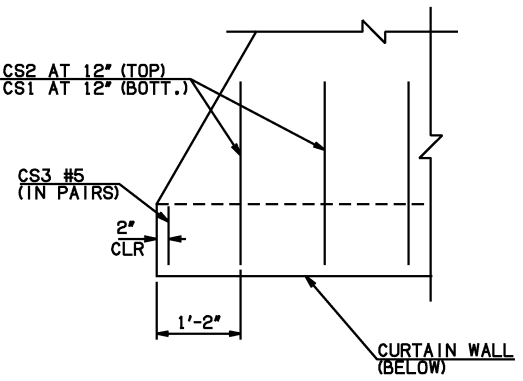


CURTAIN WALL DETAIL

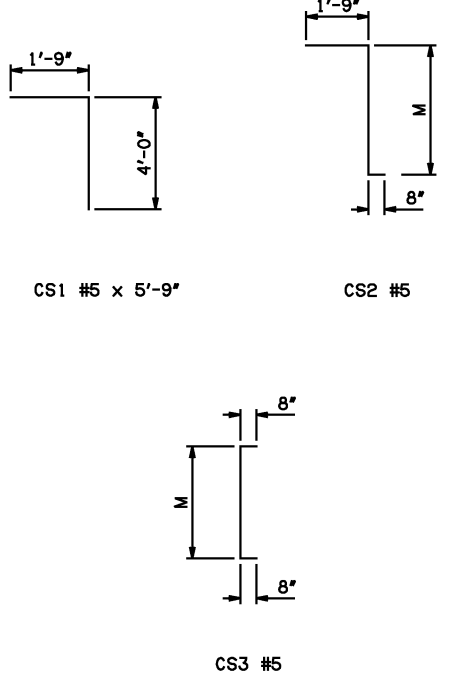
- NOTE: ① SEE RCB CULVERTS - BARREL DETAILS FOR ADDITIONAL INFORMATION
 ② NUMBER & SPACING OF CT1 BARS SHOWN IN DETAIL MAY NOT BE REPRESENTATIVE OF ACTUAL CURTAIN WALL SECTION. SEE SCHEDULE FOR NUMBER AND SPACING OF CT1 BARS.
 ③ CS1 AND CS2 BARS ALIGN WITH AL BARS IN APRON SLAB.
 ④ INCLUDES 2'-6" LAP



CURTAIN WALL END DETAIL



CURTAIN WALL-APRON PLAN



APPROVED BY BRIDGE ENGINEER *Scott J. Smith* DATE 4/2/10

OKLAHOMA DEPT. OF TRANSPORTATION
 BRIDGE STANDARD (ENGLISH)

RCB CULVERTS - CURTAIN WALL DETAILS
 SINGLE CELL - 4'-0" DEPTH - 0°

2009 SPECIFICATIONS | RCB-CW1-D4-0 | 01E
 B-800E