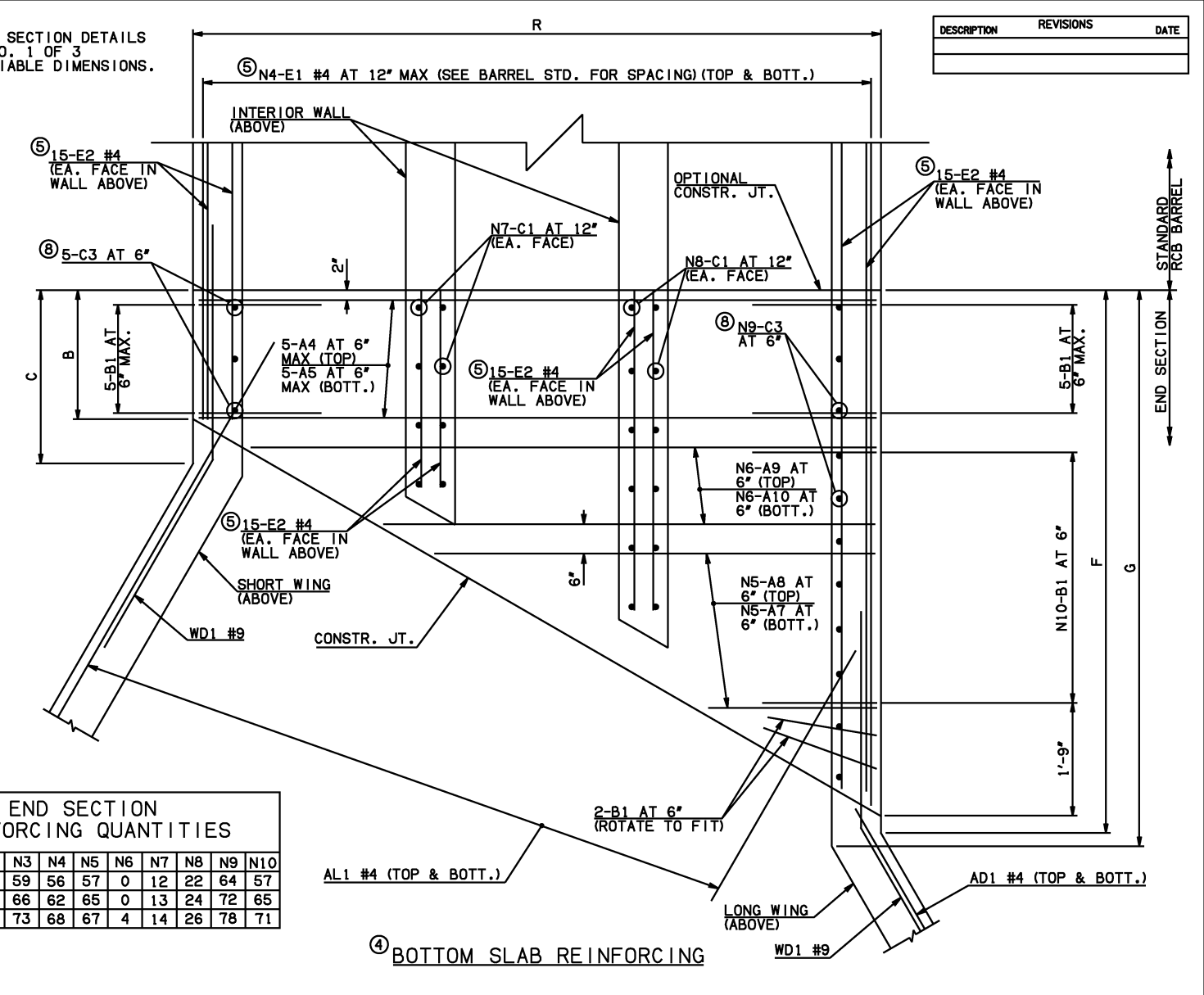


NOTE: SEE END SECTION DETAILS SHEET NO. 1 OF 3 FOR VARIABLE DIMENSIONS.



END SECTION REINFORCING QUANTITIES

SPAN	N1	N2	N3	N4	N5	N6	N7	N8	N9	N10
16'	16	34	59	56	57	0	12	22	64	57
18'	20	30	66	62	65	0	13	24	72	65
20'	24	26	73	68	67	4	14	26	78	71

END CONNECTION BAR LIST  
(VARIABLE QUANTITIES AND LENGTHS)

MARK	FORM	16' SPAN			18' SPAN			20' SPAN					
		SIZE	QTY.	LENGTH	REMARKS	SIZE	QTY.	LENGTH	REMARKS	SIZE	QTY.	LENGTH	REMARKS
A4	STR	#7	10	51'-10"		#8	10	58'-2"		#8	10	70'-0" (9)	
A5	STR	#8	10	51'-10"		#9	10	58'-2"		#9	10	70'-0" (9)	
A6	STR	#8	57	25'-7" AVG.	1'-4" TO 49'-10"	#9	65	29'-0 1/2" AVG.	1'-4" TO 56'-9"	#9	67	29'-11" AVG.	1'-4" TO 58'-6"
A7	STR	#9	114	26'-9" AVG.	2'-6" TO 51'-0"	#9	130	30'-2 1/2" AVG.	2'-6" TO 57'-11"	#10	134	31'-1" AVG.	2'-6" TO 59'-8"
A8	STR	#8	57	26'-9" AVG.	2'-6" TO 51'-0"	#9	65	30'-2 1/2" AVG.	2'-6" TO 57'-11"	#9	67	31'-1" AVG.	2'-6" TO 59'-8"
A9	STR		0				0			#10	8	67'-7 1/2" AVG.	66'-4" TO 68'-11" (9)
A10	STR		0				0			#9	8	67'-7 1/2" AVG.	66'-4" TO 68'-11" (9)
B1	BNT	#7	69	7'-0"		#7	77	7'-5"		#7	83	7'-7"	
B2	BNT	#7	69	19'-2"		#7	77	19'-7"		#7	83	19'-9"	
C1	STR	#4	68	2'-5"		#4	74	2'-8"		#4	80	2'-8"	
C2	STR	#4	68	16'-1"		#4	74	16'-4"		#4	80	16'-4"	
C3	STR	#5	69	2'-9"		#5	77	3'-0"		#5	83	3'-0"	
C4	STR	#5	69	16'-1"		#5	77	16'-4"		#5	83	16'-4"	
E1	STR	#4	224	17'-9 1/2" AVG.	2'-10" TO 32'-9"	#4	248	18'-9 1/2" AVG.	2'-0" TO 35'-7"	#4	272	20'-9" AVG.	2'-3" TO 39'-3"
E2	STR	#4	120	17'-2 1/2" AVG.	2'-10", 11'-11", 21'-9", 32'-4"	#4	120	18'-2" AVG.	2'-0", 12'-4", 23'-3", 35'-0"	#4	120	20'-2" AVG.	2'-3", 13'-9", 25'-10", 38'-9"

QUANTITIES

ITEM	UNIT	16' SPAN	18' SPAN	20' SPAN
CLASS AA CONCRETE	CY	456.80	516.90	567.30
REINFORCING STEEL	LB	66150.00	78040.00	91010.00

NOTE: QUANTITIES ABOVE ARE FOR ONE END SECTION, WHICH IS COMPRISED OF ONE END CONNECTION, ONE HEADWALL, ONE APRON, AND TWO WINGWALLS.

- NOTES:
- (3) QUANTITY SHOWN REPRESENTS TWO SETS.
  - (4) FOR FURTHER INFORMATION REGARDING END SECTION A, B, C, AND E BARS REFER TO RCB CULVERT - BARREL DETAILS.
  - (5) LENGTHS OF E1 & E2 BARS SHOWN ARE ADDITIONAL LENGTHS REQUIRED FOR THE END SECTION. LAP SPLICES, AS REQUIRED, SHALL BE IN ACCORDANCE WITH RCB BARREL STANDARD NOTES.
  - (6) 4-SETS OF N4-E1 BARS REQUIRED
  - (7) 4-SETS OF 30-E2 BARS REQUIRED WITH LENGTHS AS SHOWN CORRESPONDING TO SHORT EXTERIOR WALL, INTERIOR WALLS, AND LONG EXTERIOR WALL.
  - (8) C3 AND C4 BAR SIZE AND SPACING MAY DIFFER FROM BARREL SECTION.
  - (9) INCLUDES 5'-10" LAP.

APPROVED BY BRIDGE ENGINEER *Scott J. Smith* DATE 4/2/10

OKLAHOMA DEPT. OF TRANSPORTATION  
BRIDGE STANDARD (ENGLISH)

RCB CULVERTS - END SECTION DETAILS  
TRIPLE CELL - 15'-0" HEIGHT - 30°  
SHEET NO. 2 OF 3

2009 SPECIFICATIONS RCB-E3-H15-30-2 01E B-778E