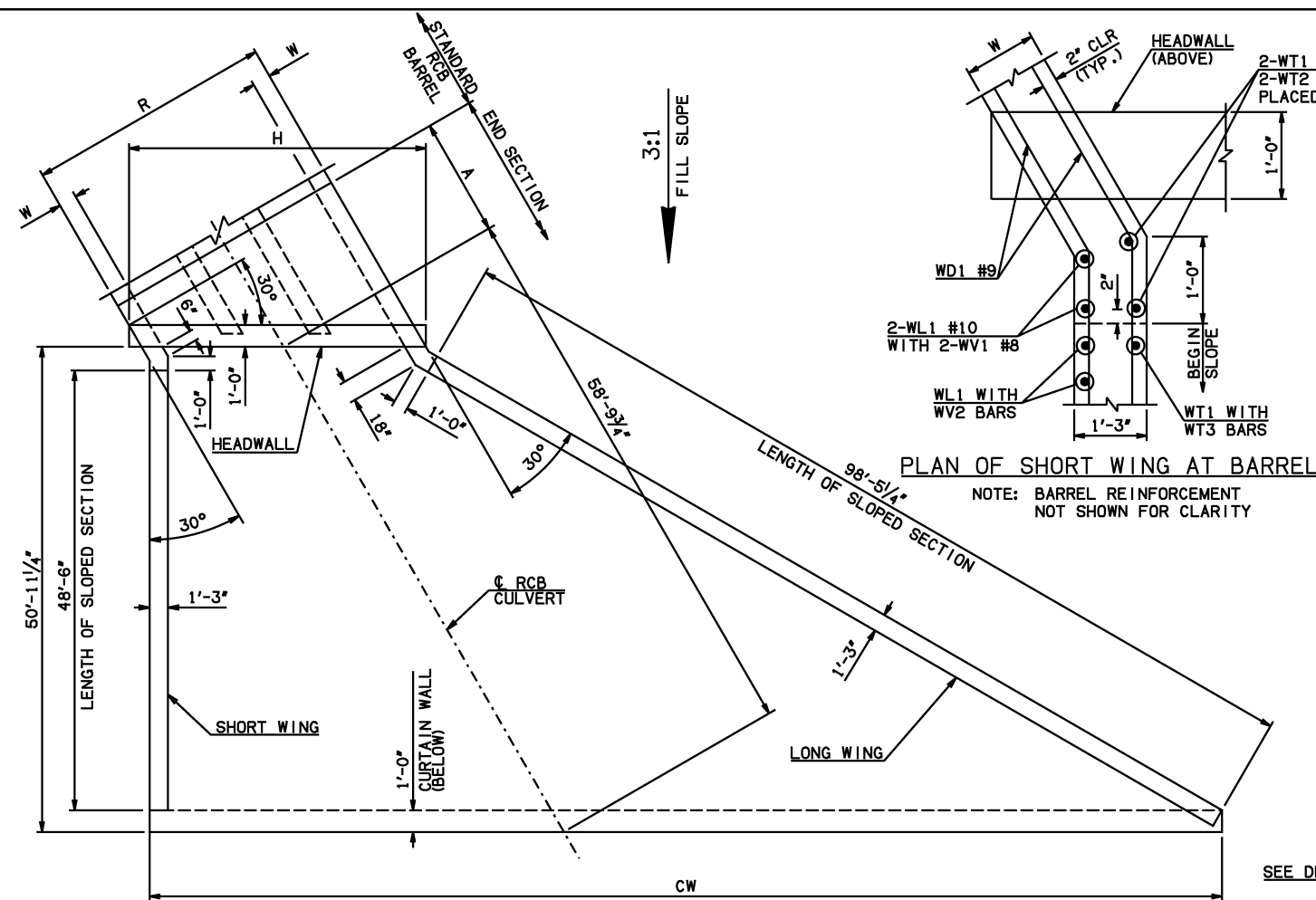


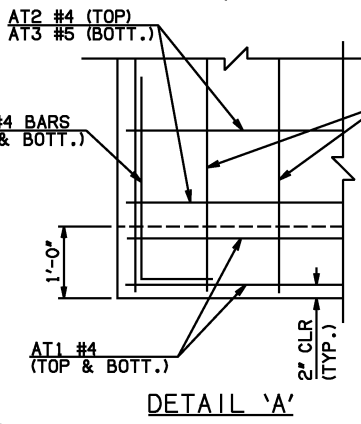
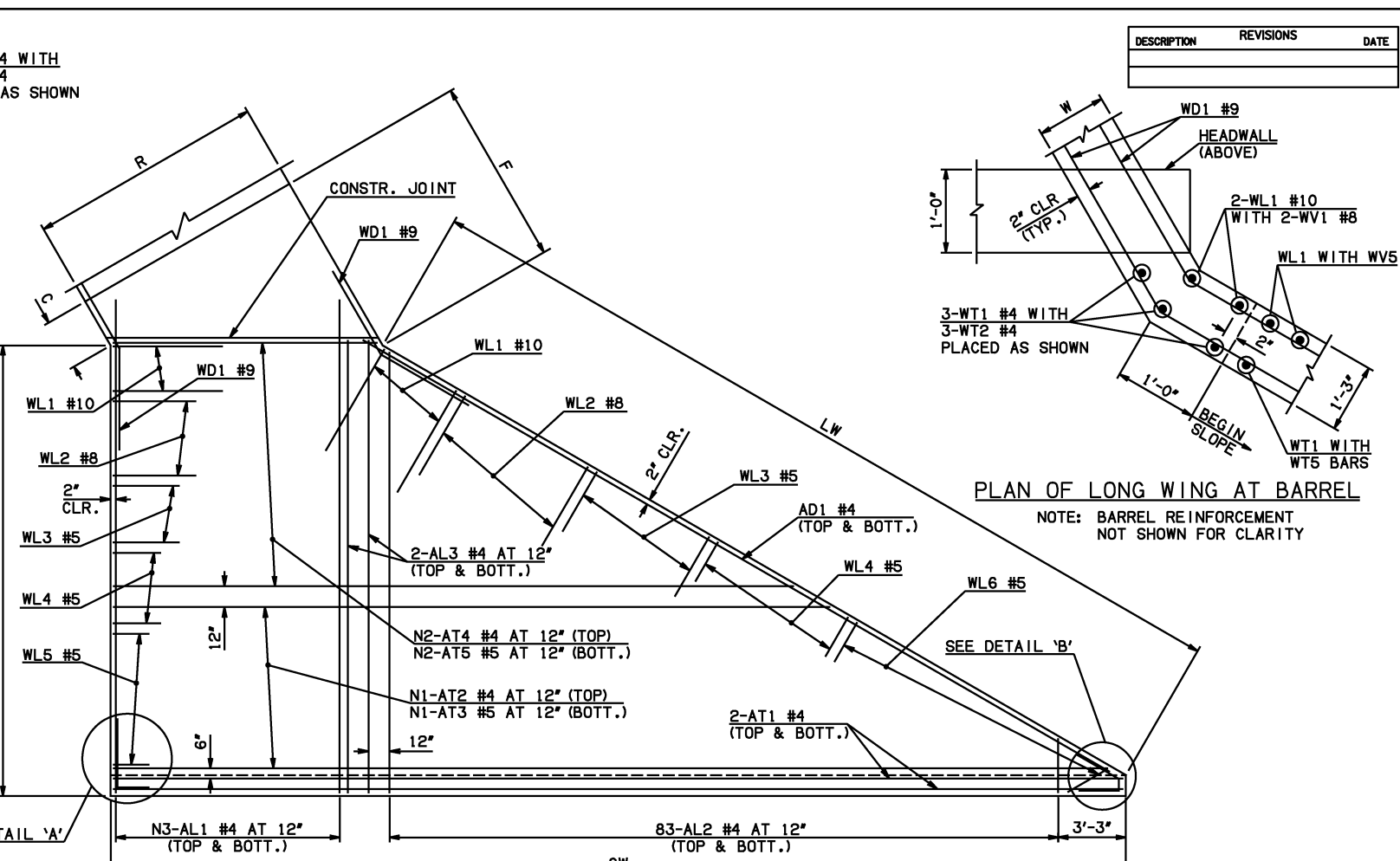
DESCRIPTION	REVISIONS	DATE



END SECTION PLAN

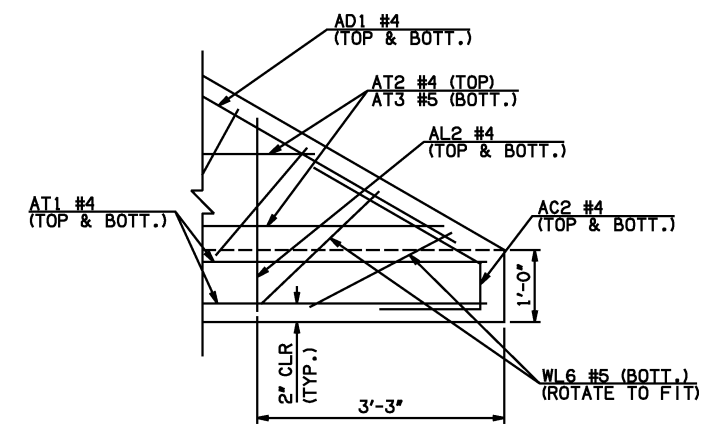
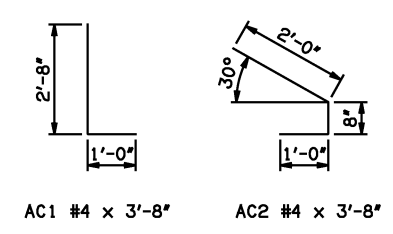
NOTE: SEE END SECTION DETAILS SHEET NO. 2 OF 3 FOR VARIABLE REINFORCING QUANTITIES.

SPAN	W	A	B	C	CW	D	E	F	G	H	LW	R	SW
16'	13'	18'-0"	2'-11 1/4"	3'-5 3/4"	148'-2 3/4"	4'-0 3/4"	33'-0 3/4"	33'-3 3/4"	33'-11 1/4"	60'-9 3/4"	99'-5 1/4"	52'-2"	50'-6"
18'	15'	19'-0"	2'-1 1/4"	3'-0"	153'-1 3/4"	3'-4"	35'-10 3/4"	36'-4"	36'-8"	68'-1 1/2"	99'-1 1/4"	58'-6"	50'-2"
20'	15'	21'-0"	2'-4 1/2"	3'-3 3/4"	160'-1"	3'-7 1/4"	39'-7 1/2"	40'-0 3/4"	40'-4 3/4"	75'-0 3/4"	99'-1 1/4"	64'-6"	50'-2"



DETAIL 'A'

APRON REINFORCING



DETAIL 'B'

- ① INCLUDES 2'-6" LAP
- ② INCLUDES TWO 2'-6" LAPS.
- ③ QUANTITY SHOWN REPRESENTS TWO SETS.
- ④ INCLUDES 5'-10" LAP.

MARK	SIZE	FORM	ONE APRON AND ONE HEADWALL SHOWN							
			16' SPAN		18' SPAN		20' SPAN			
QTY.	LENGTH	REMARKS	QTY.	LENGTH	REMARKS	QTY.	LENGTH	REMARKS		
AC1 #4	BNT	2	3'-8"		2	3'-8"		2	3'-8"	
AC2 #4	BNT	2	3'-8"		2	3'-8"		2	3'-8"	
AD1 #4	STR	2	102'-0"		2	102'-0"		2	102'-0"	
AL1 #4	STR	118	52'-9"		132	52'-9"		146	52'-9"	
AL2 #4	STR	166	26'-2" AVG.	2'-6" TO 49'-10"	166	26'-2" AVG.	2'-6" TO 49'-10"	166	26'-2" AVG.	2'-6" TO 49'-10"
AL3 #4	STR	4	50'-9"		4	50'-9"		4	50'-9"	
AT1 #4	STR	4	150'-10"		4	157'-9"		4	164'-8"	
AT2 #4	STR	16	137'-1" AVG.	124'-1" TO 150'-1"	20	140'-6 1/2" AVG.	124'-1" TO 157'-0"	24	144'-0 1/2" AVG.	124'-1" TO 164'-0"
AT3 #5	STR	16	137'-1" AVG.	124'-1" TO 150'-1"	20	140'-6 1/2" AVG.	124'-1" TO 157'-0"	24	144'-0 1/2" AVG.	124'-1" TO 164'-0"
AT4 #4	STR	34	91'-4" AVG.	62'-9" TO 119'-11"	30	94'-9 1/2" AVG.	69'-8" TO 119'-11"	26	98'-3" AVG.	76'-7" TO 119'-11"
AT5 #5	STR	34	91'-4" AVG.	62'-9" TO 119'-11"	30	94'-9 1/2" AVG.	69'-8" TO 119'-11"	26	98'-3" AVG.	76'-7" TO 119'-11"
CH #8	STR	4	66'-3" ④		4	73'-5" ④		4	80'-6" ④	
CL1 #5	BNT	61	4'-4"		68	4'-4"		75	4'-4"	
CL2 #5	BNT	61	4'-3"		68	4'-3"		75	4'-3"	
HD #9	STR	2	66'-3" ④		2	73'-5" ④		2	80'-6" ④	

APPROVED BY BRIDGE ENGINEER *Scott J. Smith* DATE 4/2/10

OKLAHOMA DEPT. OF TRANSPORTATION
BRIDGE STANDARD (ENGLISH)
 RCB CULVERTS - END SECTION DETAILS
 TRIPLE CELL - 15'-0" HEIGHT - 30°
 SHEET NO. 1 OF 3

2009 SPECIFICATIONS | RCB-E3-H15-30-1 | 01E | B-777E