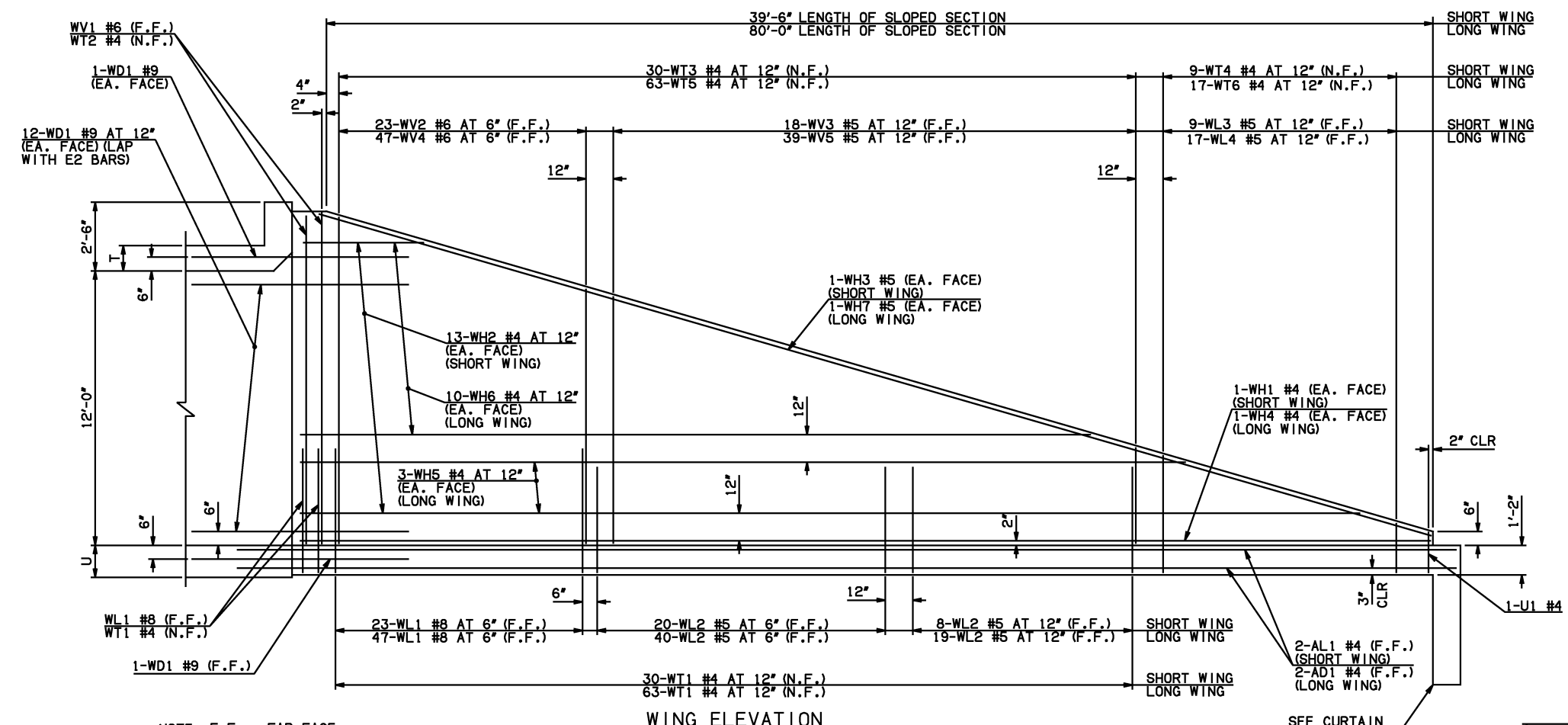
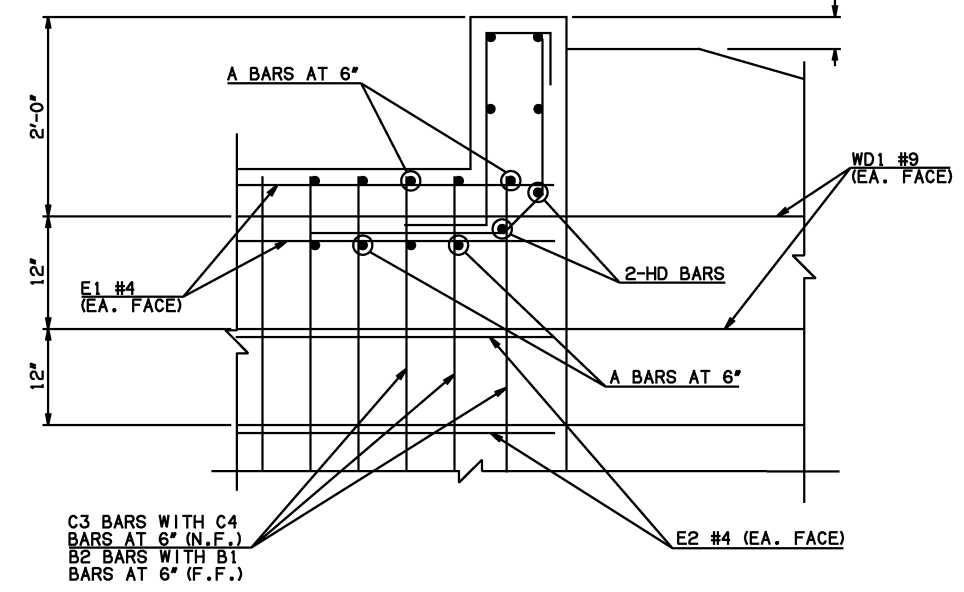


DESCRIPTION	REVISIONS	DATE

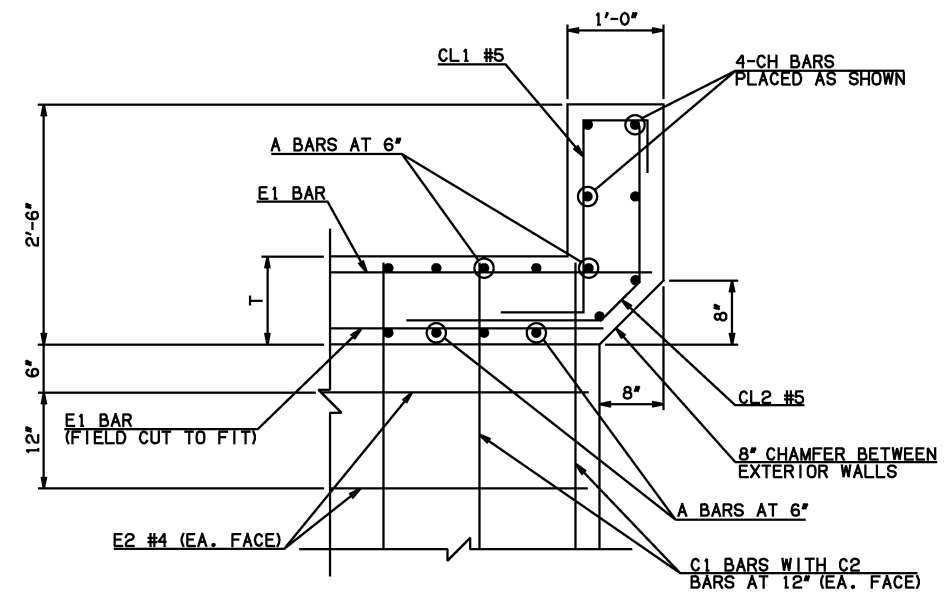


NOTE: F.F. = FAR FACE
N.F. = NEAR FACE

WING ELEVATION

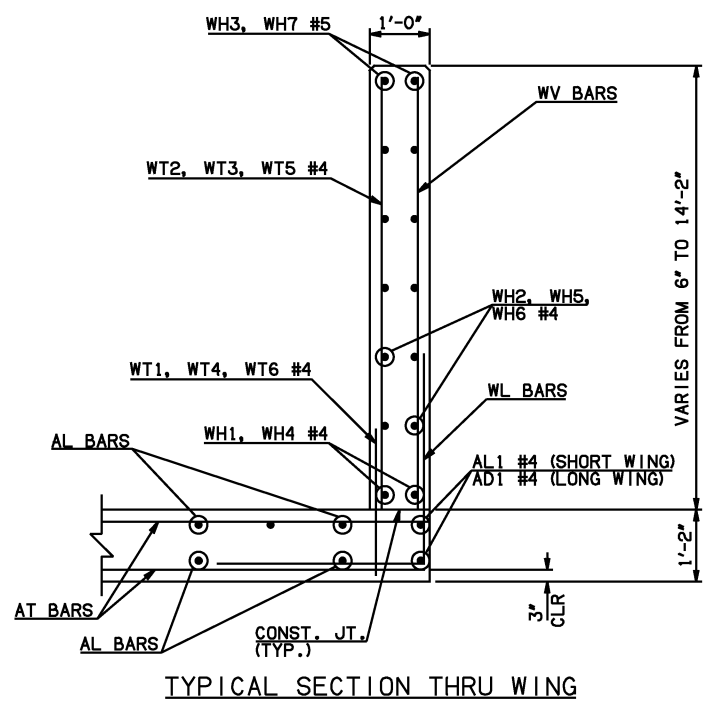


④ HEADWALL DETAIL AT EXTERIOR WALL

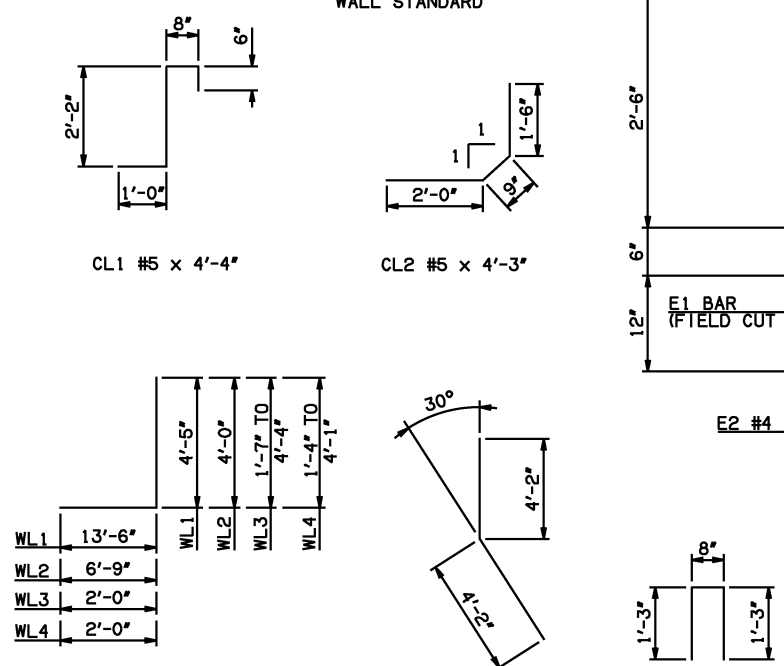


④ HEADWALL DETAIL AT INTERIOR WALL

NOTES:
 ① INCLUDES 2'-6" LAP
 ③ QUANTITY SHOWN REPRESENTS TWO SETS.
 ④ FOR FURTHER INFORMATION REGARDING END SECTION BARS A, B, C, E1, AND E2, REFER TO RCB CULVERT - BARREL DETAILS.
 ⑤ INCLUDES 5'-10" LAP.



TYPICAL SECTION THRU WING



WL1 #8 x 17'-11"
 WL2 #5 x 10'-9"
 WL3 #5 x 4'-11 1/2" AVG.
 WL4 #5 x 4'-8 1/2" AVG.
 WD1 #9 x 8'-4"
 U1 #4 x 3'-2"

WINGWALL BAR LIST
(LONG AND SHORT WING INCLUDED)

MARK	SIZE	QTY.	FORM	LENGTH	REMARKS
WD1	#9	54	BNT	8'-4"	
WH1	#4	2	STR	40'-4"	
WH2	#4	26	STR	20'-7 1/2" AVG.	3'-3" TO 38'-0"
WH3	#5	2	STR	41'-7"	
WH4	#4	2	STR	83'-4"	
WH5	#4	6	STR	72'-8 1/2" AVG.	66'-10" TO 78'-7"
WH6	#4	20	STR	32'-2" AVG.	5'-10" TO 58'-6"
WH7	#5	2	STR	83'-5"	
WL1	#8	74	BNT	17'-11"	
WL2	#5	87	BNT	10'-9"	
WL3	#5	9	BNT	4'-11 1/2" AVG.	3'-7" TO 6'-4"
WL4	#5	17	BNT	4'-8 1/2" AVG.	3'-4" TO 6'-1"
WT1	#4	98	STR	2'-10"	
WT2	#4	5	STR	14'-0"	
WT3	#4	30	STR	8'-10" AVG.	3'-10" TO 13'-10"
WT4	#4	9	STR	2'-11 1/2" AVG.	1'-7" TO 4'-4"
WT5	#4	63	STR	8'-7 1/2" AVG.	3'-4" TO 13'-11"
WT6	#4	17	STR	2'-8 1/2" AVG.	1'-4" TO 4'-1"
WV1	#6	4	STR	14'-0"	
WV2	#6	23	STR	11'-11" AVG.	10'-0" TO 13'-10"
WV3	#5	18	STR	6'-9" AVG.	3'-10" TO 9'-8"
WV4	#6	47	STR	11'-11 1/2" AVG.	10'-0" TO 13'-11"
WV5	#5	39	STR	6'-7" AVG.	3'-4" TO 9'-10"
U1	#4	2	BNT	3'-2"	

HEADWALL BAR LIST

MARK	FORM	ONE HEADWALL SHOWN																	
		12' SPAN				14' SPAN				16' SPAN				18' SPAN				20' SPAN	
SIZE	QTY.	LENGTH	SIZE	QTY.	LENGTH	SIZE	QTY.	LENGTH	SIZE	QTY.	LENGTH	SIZE	QTY.	LENGTH	SIZE	QTY.	LENGTH		
CH	STR	#6	4	46'-5"	#6	4	53'-4"	#8	4	66'-3" ⑤	#8	4	73'-5" ⑤	#8	4	80'-6" ⑤			
CL1	BNT	#5	47	4'-4"	#5	54	4'-4"	#5	61	4'-4"	#5	68	4'-4"	#5	75	4'-4"			
CL2	BNT	#5	47	4'-3"	#5	54	4'-3"	#5	61	4'-3"	#5	68	4'-3"	#5	75	4'-3"			
HD	STR	#8	2	46'-5"	#8	2	53'-4"	#9	2	66'-3" ⑤	#9	2	73'-5" ⑤	#9	2	80'-6" ⑤			

APPROVED BY BRIDGE ENGINEER *Scott Lueck* DATE 4/2/10

OKLAHOMA DEPT. OF TRANSPORTATION
BRIDGE STANDARD (ENGLISH)
 RCB CULVERTS - END SECTION DETAILS
 TRIPLE CELL - 12'-0" HEIGHT - 30°
 SHEET NO. 3 OF 3

2009 SPECIFICATIONS RCB-E3-H12-30-3 01E B-776E