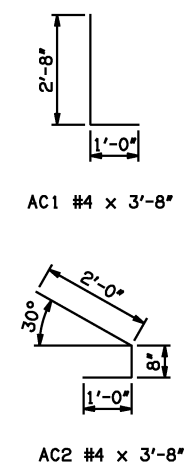


APRON BAR LIST

ONE APRON SHOWN

MARK	SIZE	FORM	12' SPAN		14' SPAN		16' SPAN		18' SPAN		20' SPAN			
			QTY.	LENGTH	REMARKS	QTY.	LENGTH	REMARKS	QTY.	LENGTH	REMARKS	QTY.	LENGTH	REMARKS
AC1	#4	BNT	2	3'-8"		2	3'-8"		2	3'-8"		2	3'-8"	
AC2	#4	BNT	2	3'-8"		2	3'-8"		2	3'-8"		2	3'-8"	
AD1	#4	STR	2	84'-0"		2	84'-0"		2	84'-0"		2	84'-0"	
AL1	#4	STR	90	43'-9"		104	43'-9"		118	43'-9"		132	43'-9"	
AL2	#4	STR	134	21'-6 1/2" AVG.	2'-6" TO 40'-7"	134	21'-6 1/2" AVG.	2'-6" TO 40'-7"	134	21'-6 1/2" AVG.	2'-6" TO 40'-7"	134	21'-6 1/2" AVG.	2'-6" TO 40'-7"
AL3	#4	STR	4	41'-9"		4	41'-9"		4	41'-9"		4	41'-9"	
AT1	#4	STR	4	118'-2" ①		4	127'-7" ②		4	134'-6" ②		4	141'-5" ②	
AT2	#4	STR	32	90'-7" AVG. ①	63'-9" TO 117'-5"	3	125'-1" AVG. ②	123'-4" TO 126'-10"	7	128'-6 1/2" AVG. ②	123'-4" TO 133'-9"	11	132'-0" AVG. ②	123'-4" TO 140'-8"
AT3	#5	STR	32	90'-7" AVG. ①	63'-9" TO 117'-5"	3	125'-1" AVG. ②	123'-4" TO 126'-10"	7	128'-6 1/2" AVG. ②	123'-4" TO 133'-9"	11	132'-0" AVG. ②	123'-4" TO 140'-8"
AT4	#4	STR	9	52'-7" AVG.	45'-8" TO 59'-6"	38	87'-1 1/2" AVG. ①	55'-1" TO 119'-2"	34	90'-7" AVG. ①	62'-0" TO 119'-2"	30	94'-0 1/2" AVG. ①	68'-11" TO 119'-2"
AT5	#5	STR	9	52'-7" AVG.	45'-8" TO 59'-6"	38	87'-1 1/2" AVG. ①	55'-1" TO 119'-2"	34	90'-7" AVG. ①	62'-0" TO 119'-2"	30	94'-0 1/2" AVG. ①	68'-11" TO 119'-2"

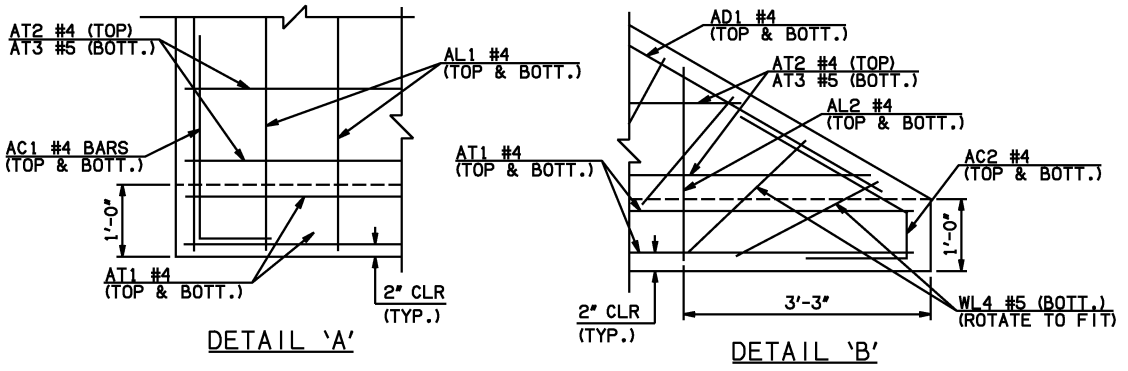


- ① INCLUDES 2'-6" LAP
- ② INCLUDES TWO 2'-6" LAPS
- ③ QUANTITY SHOWN REPRESENTS TWO SETS.

NOTE: SEE END SECTION DETAILS SHEET NO. 2 OF 3 FOR VARIABLE REINFORCING QUANTITIES.

END SECTION VARIABLE DIMENSIONS

SPAN	W	A	B	C	CW	D	E	F	G	H	LW	R	SW
12'	12"	14'-0"	2'-5 1/2"	3'-3 1/4"	116'-0 1/4"	3'-6 1/4"	25'-6 1/2"	26'-2 1/2"	26'-5 3/4"	46'-9 1/4"	80'-8 3/4"	40'-0"	41'-2 3/4"
14'	12"	16'-0"	2'-8 3/4"	3'-6 1/4"	122'-11 1/2"	3'-9 1/2"	29'-3 1/4"	29'-11 1/4"	30'-2 1/2"	53'-8 1/4"	80'-8 3/4"	46'-0"	41'-2 3/4"
16'	13"	18'-0"	2'-11 1/4"	3'-11 1/4"	129'-10 1/2"	4'-0 3/4"	33'-0 3/4"	33'-9 3/4"	33'-11 1/4"	60'-9 3/4"	80'-6 3/4"	52'-2"	41'-0 3/4"
18'	14"	19'-0"	2'-2"	3'-4 1/4"	136'-9 3/4"	3'-4"	35'-10"	36'-8 1/4"	36'-8"	67'-11 1/4"	80'-4 3/4"	58'-4"	40'-10 3/4"
20'	15"	21'-0"	2'-4 1/2"	3'-9 1/4"	143'-8 3/4"	3'-7 1/4"	39'-7 1/2"	40'-6 3/4"	40'-4 3/4"	75'-0 3/4"	80'-2 3/4"	64'-6"	40'-8 3/4"



APPROVED BY BRIDGE ENGINEER *Scott Luch* DATE 4/2/10

OKLAHOMA DEPT. OF TRANSPORTATION
BRIDGE STANDARD (ENGLISH)

RCB CULVERTS - END SECTION DETAILS
 TRIPLE CELL - 12'-0" HEIGHT - 30°

SHEET NO. 1 OF 3

2009 SPECIFICATIONS	RCB-E3-H12-30-1	01E
---------------------	-----------------	-----

B-774E