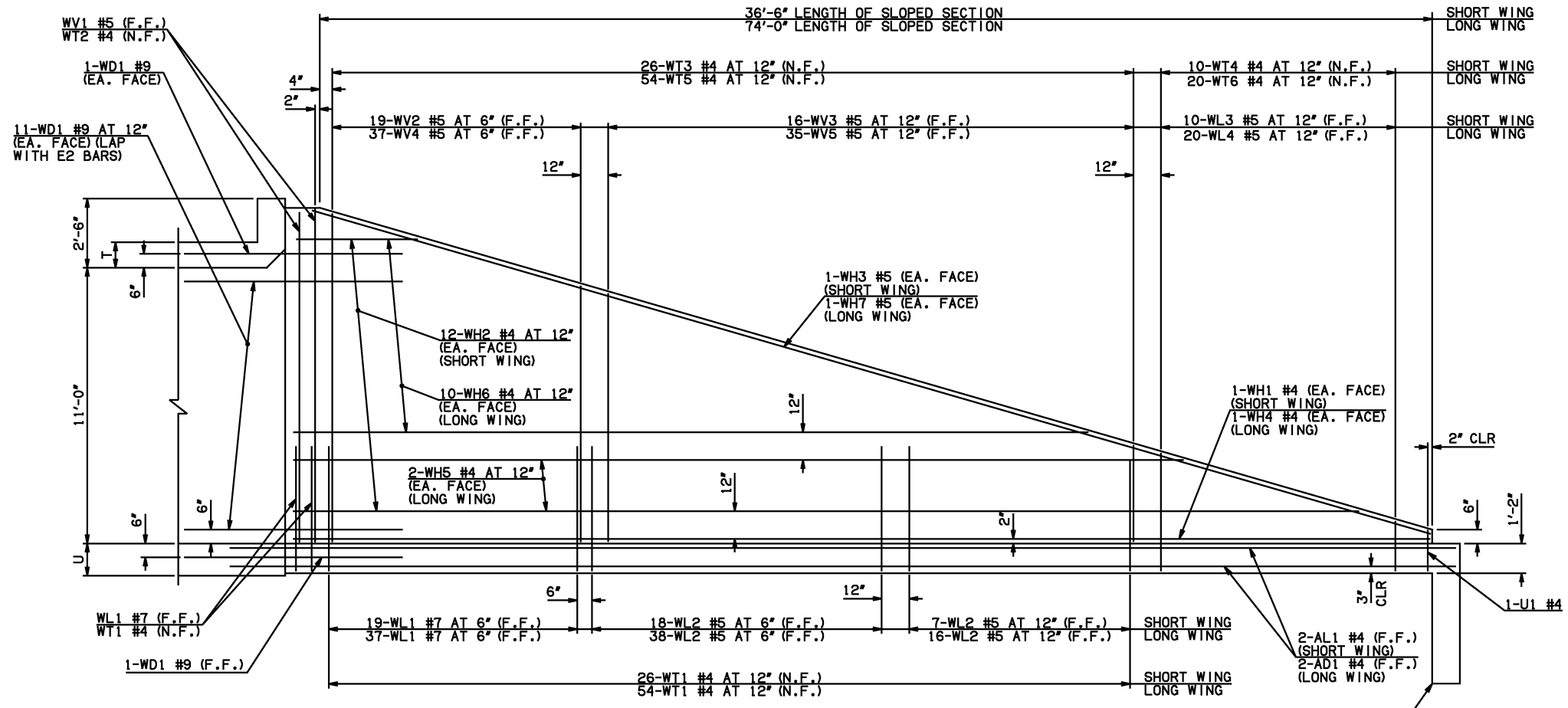
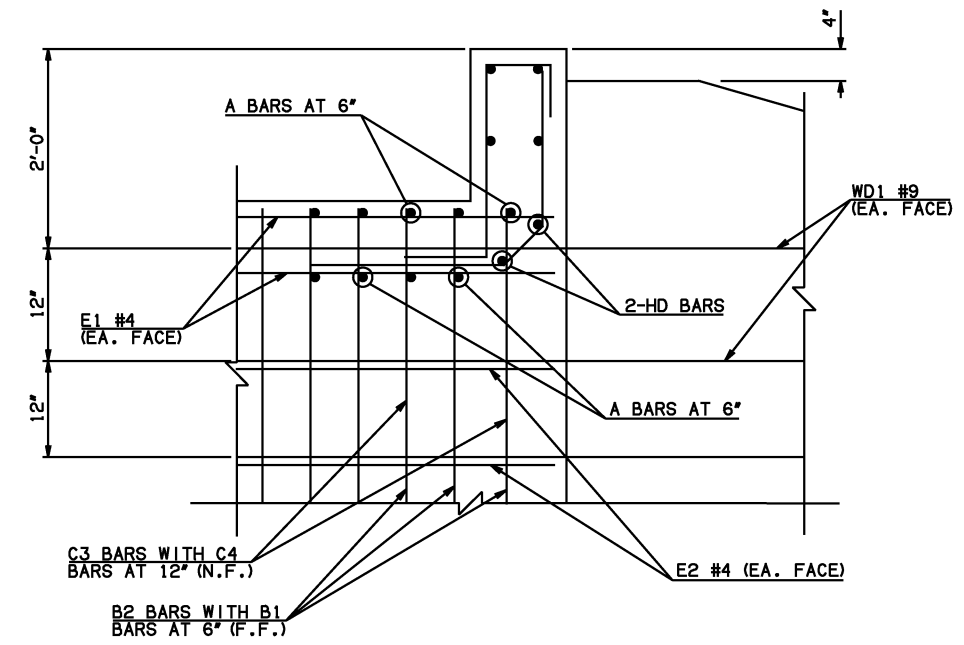


DESCRIPTION	REVISIONS	DATE

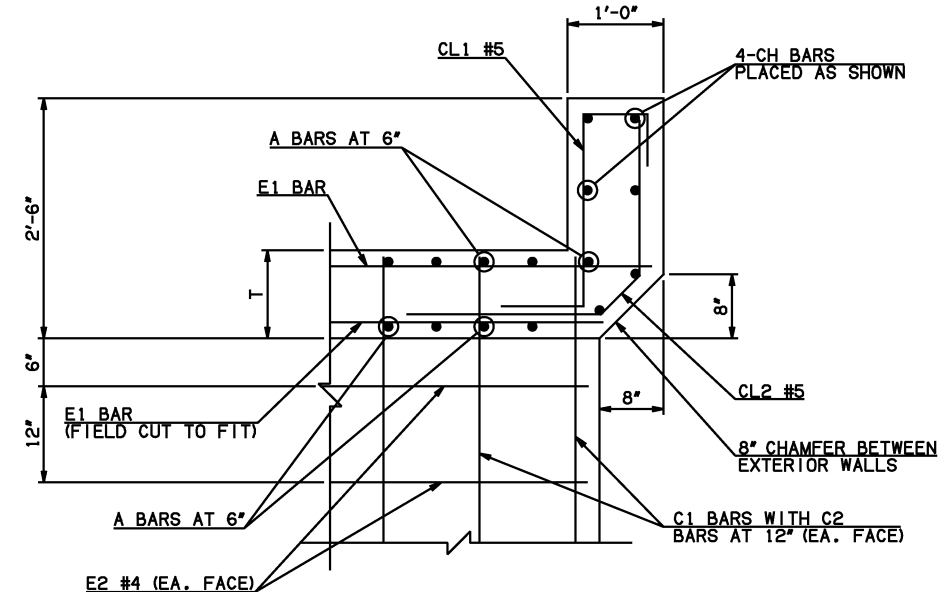


NOTE: F.F. = FAR FACE
N.F. = NEAR FACE

WING ELEVATION



④ HEADWALL DETAIL AT EXTERIOR WALL

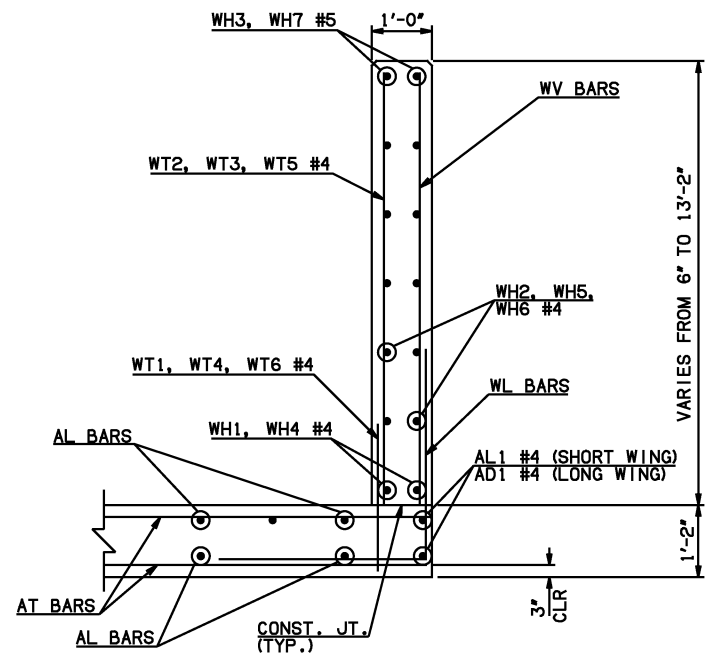


④ HEADWALL DETAIL AT INTERIOR WALL
DIMENSION SHOWN NORMAL TO HEADWALL

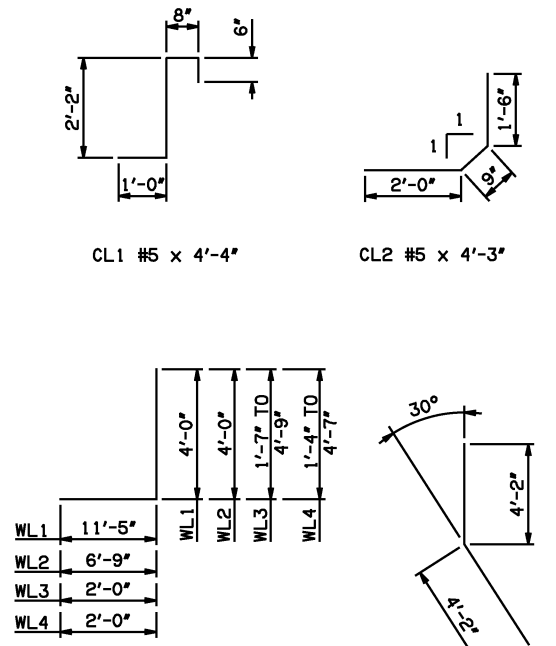
- NOTES:
- ① INCLUDES 2'-6" LAP
 - ③ QUANTITY SHOWN REPRESENTS TWO SETS.
 - ④ FOR FURTHER INFORMATION REGARDING END SECTION BARS A, B, C, E1, AND E2, REFER TO RCB CULVERT - BARREL DETAILS.
 - ⑤ INCLUDES 5'-10" LAP.

WINGWALL BAR LIST
(LONG AND SHORT WING INCLUDED)

MARK	SIZE	QTY.	FORM	LENGTH	REMARKS
WD1	#9	50	BNT	8'-4"	
WH1	#4	2	STR	37'-4"	
③ WH2	#4	24	STR	19'-11 1/2" AVG.	3'-3" TO 35'-0"
① WH3	#5	2	STR	38'-5"	
① WH4	#4	2	STR	77'-4"	
③ WH5	#4	4	STR	69'-8" AVG.	66'-9" TO 72'-7"
③ WH6	#4	20	STR	32'-0 1/2" AVG.	5'-9" TO 58'-4"
① WH7	#5	2	STR	77'-4"	
WL1	#7	60	BNT	15'-5"	
WL2	#5	79	BNT	10'-9"	
WL3	#5	10	BNT	5'-2" AVG.	3'-7" TO 6'-9"
WL4	#5	20	BNT	4'-11 1/2" AVG.	3'-4" TO 6'-7"
WT1	#4	85	STR	2'-10"	
WT2	#4	5	STR	13'-0"	
WT3	#4	26	STR	8'-6" AVG.	4'-2" TO 12'-10"
WT4	#4	10	STR	3'-2" AVG.	1'-7" TO 4'-9"
WT5	#4	54	STR	8'-4 1/2" AVG.	3'-10" TO 12'-11"
WT6	#4	20	STR	2'-11 1/2" AVG.	1'-4" TO 4'-7"
WV1	#5	4	STR	13'-0"	
WV2	#5	19	STR	11'-3 1/2" AVG.	9'-9" TO 12'-10"
WV3	#5	16	STR	6'-9" AVG.	4'-2" TO 9'-4"
WV4	#5	37	STR	11'-4 1/2" AVG.	9'-10" TO 12'-11"
WV5	#5	35	STR	6'-9" AVG.	3'-10" TO 9'-8"
U1	#4	2	BNT	3'-2"	



TYPICAL SECTION THRU WING



- WL1 #7 x 15'-5"
- WL2 #5 x 10'-9"
- WL3 #5 x 5'-2" AVG.
- WL4 #5 x 4'-11 1/2" AVG.
- WD1 #9 x 8'-4"
- U1 #4 x 3'-2"

HEADWALL BAR LIST
ONE HEADWALL SHOWN

MARK	FORM	12' SPAN			14' SPAN			16' SPAN			18' SPAN			20' SPAN		
		SIZE	QTY.	LENGTH	SIZE	QTY.	LENGTH	SIZE	QTY.	LENGTH	SIZE	QTY.	LENGTH	SIZE	QTY.	LENGTH
CH	STR	#6	4	46'-5"	#6	4	53'-4"	#8	4	66'-3" ⑤	#8	4	73'-5" ⑤	#8	4	80'-6" ⑤
CL1	BNT	#5	47	4'-4"	#5	54	4'-4"	#5	61	4'-4"	#5	68	4'-4"	#5	75	4'-4"
CL2	BNT	#5	47	4'-3"	#5	54	4'-3"	#5	61	4'-3"	#5	68	4'-3"	#5	75	4'-3"
HD	STR	#8	2	46'-5"	#8	2	53'-4"	#9	2	66'-3" ⑤	#9	2	73'-5" ⑤	#9	2	80'-6" ⑤

APPROVED BY BRIDGE ENGINEER *Scott J. Smith* DATE 4/2/10

OKLAHOMA DEPT. OF TRANSPORTATION
BRIDGE STANDARD (ENGLISH)
 RCB CULVERTS - END SECTION DETAILS
 TRIPLE CELL - 11'-0" HEIGHT - 30°
 SHEET NO. 3 OF 3

2009 SPECIFICATIONS RCB-E3-H11-30-3 01E B-773E