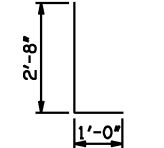


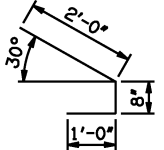
**APRON BAR LIST**

ONE APRON SHOWN

MARK	SIZE	FORM	12' SPAN		14' SPAN		16' SPAN		18' SPAN		20' SPAN			
			QTY.	LENGTH	REMARKS	QTY.	LENGTH	REMARKS	QTY.	LENGTH	REMARKS	QTY.	LENGTH	REMARKS
AC1	#4	BNT	2	3'-8"		2	3'-8"		2	3'-8"		2	3'-8"	
AC2	#4	BNT	2	3'-8"		2	3'-8"		2	3'-8"		2	3'-8"	
AD1	#4	STR	2	78'-0"		2	78'-0"		2	78'-0"		2	78'-0"	
AL1	#4	STR	90	40'-9"		104	40'-9"		118	40'-9"		132	40'-9"	
AL2	#4	STR	124	20'-1" AVG.	2'-6" TO 37'-8"	124	20'-1" AVG.	2'-6" TO 37'-8"	124	20'-1" AVG.	2'-6" TO 37'-8"	124	20'-1" AVG.	2'-6" TO 37'-8"
AL3	#4	STR	4	38'-9"		4	38'-9"		4	38'-9"		4	38'-9"	
AT1	#4	STR	4	112'-11"	①	4	119'-11"	①	4	129'-4"	②	4	143'-2"	②
AT2	#4	STR	29	88'-0" AVG.	①	33	91'-5 1/2" AVG.	①	4	125'-11 1/2" AVG.	②	12	132'-10 1/2" AVG.	②
AT3	#5	STR	29	88'-0" AVG.	①	33	91'-5 1/2" AVG.	①	4	125'-11 1/2" AVG.	②	12	132'-10 1/2" AVG.	②
AT4	#4	STR	9	52'-7" AVG.		5	56'-0 1/2" AVG.		34	90'-7" AVG.	①	30	94'-0 1/2" AVG.	①
AT5	#5	STR	9	52'-7" AVG.		5	56'-0 1/2" AVG.		34	90'-7" AVG.	①	30	94'-0 1/2" AVG.	①



AC1 #4 x 3'-8"



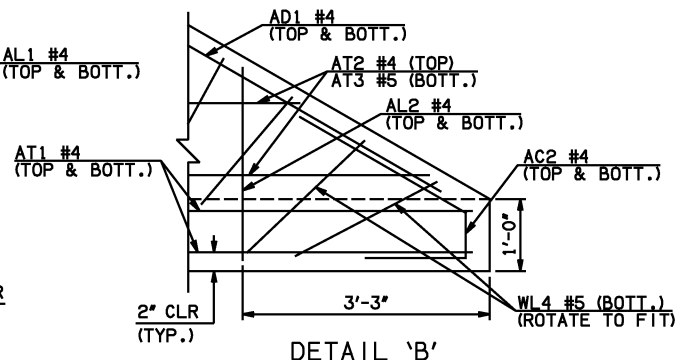
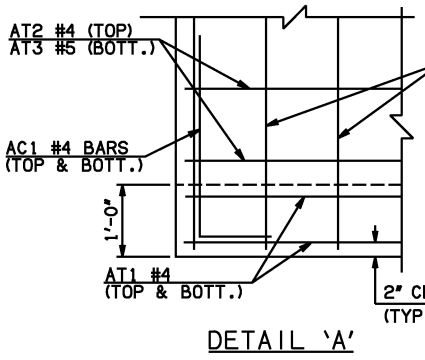
AC2 #4 x 3'-8"

- ① INCLUDES 2'-6" LAP
- ② INCLUDES TWO 2'-6" LAPS
- ③ QUANTITY SHOWN REPRESENTS TWO SETS.

NOTE: SEE END SECTION DETAILS SHEET NO. 2 OF 3 FOR VARIABLE REINFORCING QUANTITIES.

**END SECTION VARIABLE DIMENSIONS**

SPAN	W	A	B	C	CW	D	E	F	G	H	LW	R	SW
12'	12"	14'-0"	2'-5 1/2"	3'-3 1/4"	110'-10"	3'-6 1/4"	25'-6 1/2"	26'-2 1/2"	26'-5 3/4"	46'-9 1/4"	74'-8 3/4"	40'-0"	38'-2 3/4"
14'	12"	16'-0"	2'-8 3/4"	3'-6 1/4"	117'-9"	3'-9 1/2"	29'-3 1/4"	29'-11 1/4"	30'-2 1/2"	53'-8 1/4"	74'-8 3/4"	46'-0"	38'-2 3/4"
16'	13"	18'-0"	2'-11 1/4"	3'-11 1/4"	124'-8 1/4"	4'-0 3/4"	33'-0 3/4"	33'-9 3/4"	33'-11 1/4"	60'-9 3/4"	74'-6 3/4"	52'-2"	38'-0 3/4"
18'	14"	19'-0"	2'-2"	3'-4 1/4"	131'-7 1/2"	3'-4"	35'-10"	36'-8 1/4"	36'-8"	67'-11 1/4"	74'-4 3/4"	58'-4"	37'-10 3/4"
20'	15"	21'-0"	2'-4 1/2"	3'-9 1/4"	138'-6 1/2"	3'-7 1/4"	39'-7 1/2"	40'-6 3/4"	40'-4 3/4"	75'-0 3/4"	74'-2 3/4"	64'-6"	37'-8 3/4"



APPROVED BY BRIDGE ENGINEER *Scott Luchs* DATE 4/2/10

**OKLAHOMA DEPT. OF TRANSPORTATION**  
**BRIDGE STANDARD (ENGLISH)**  
 RCB CULVERTS - END SECTION DETAILS  
 TRIPLE CELL - 11'-0" HEIGHT - 30°  
 SHEET NO. 1 OF 3

2009 SPECIFICATIONS RCB-E3-H11-30-1 01E B-771E