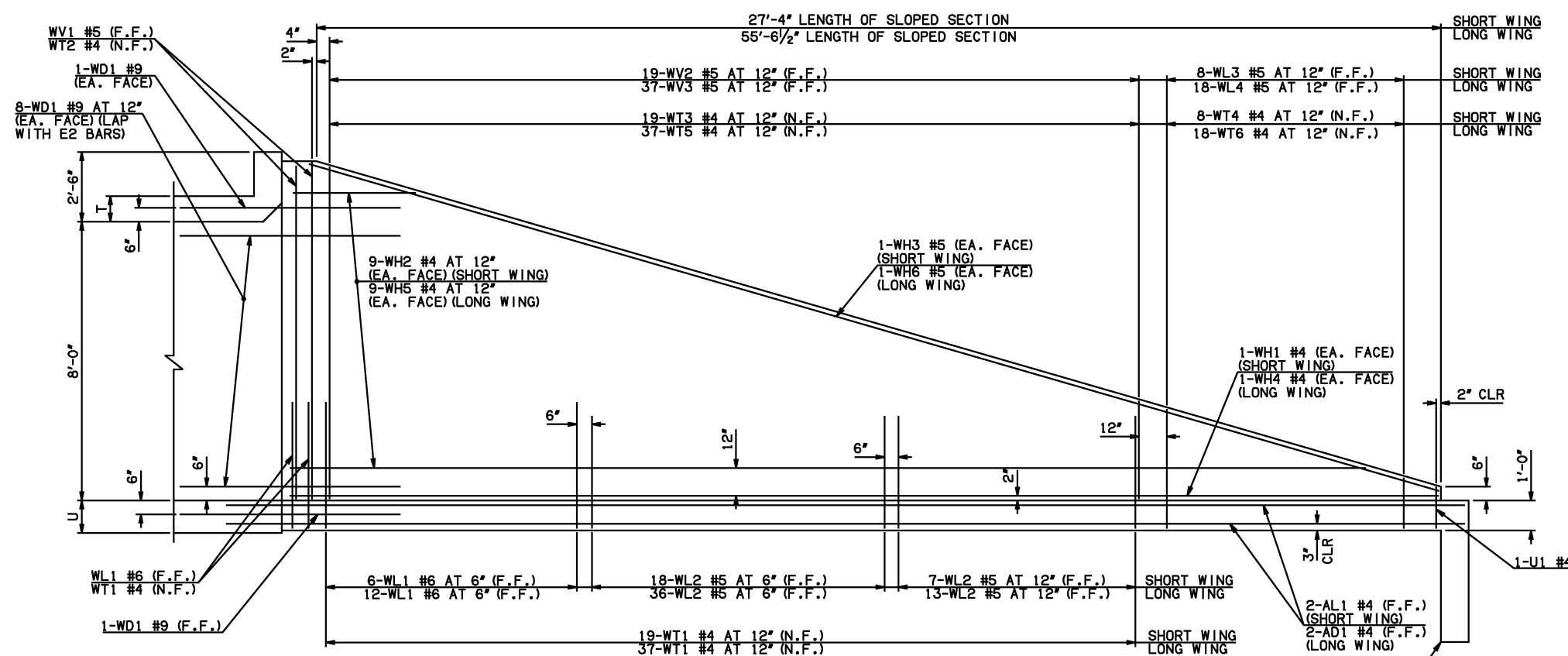
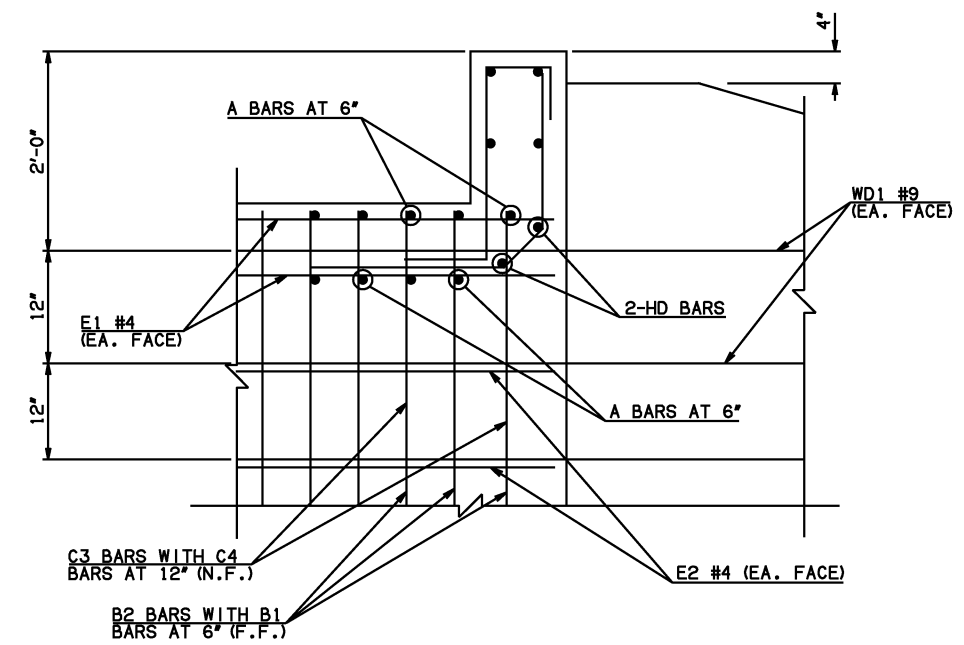


| DESCRIPTION | REVISIONS | DATE |
|-------------|-----------|------|
| | | |

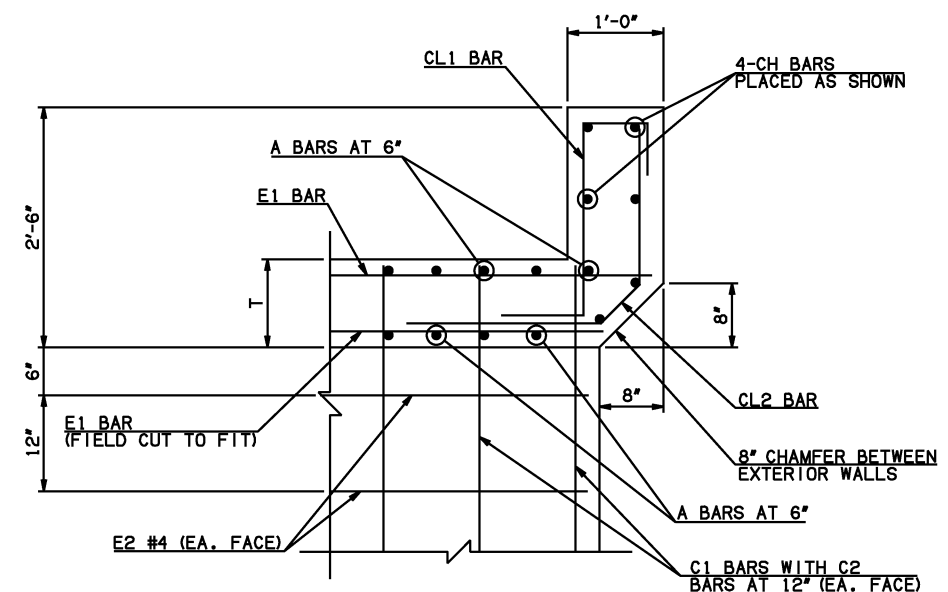


NOTE: F.F. = FAR FACE
N.F. = NEAR FACE

WING ELEVATION

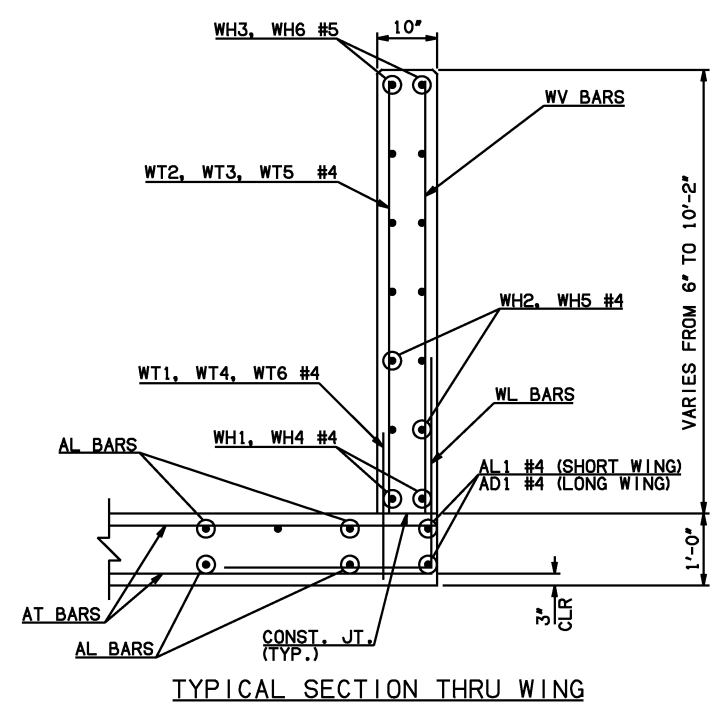


HEADWALL DETAIL AT EXTERIOR WALL

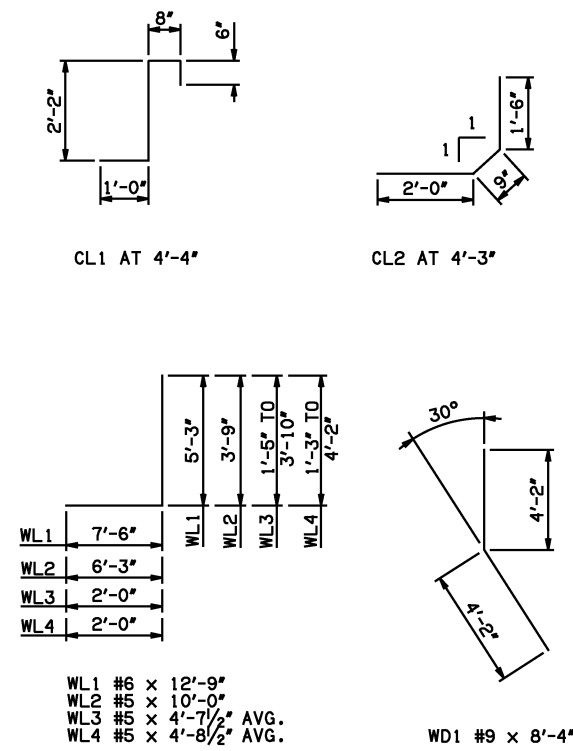


HEADWALL DETAIL AT INTERIOR WALL

NOTES:
 ② QUANTITY SHOWN REPRESENTS TWO SETS.
 ③ FOR FURTHER INFORMATION REGARDING END SECTION BARS A, B, C, E1, AND E2, REFER TO RCB CULVERT - BARREL DETAILS.
 ④ INCLUDES 5'-10\"/>



TYPICAL SECTION THRU WING



WL1 #6 x 12'-9"
 WL2 #5 x 10'-0"
 WL3 #5 x 4'-7 1/2\"/>

WD1 #9 x 8'-4"

U1 #4 x 2'-8"

| WINGWALL BAR LIST (LONG AND SHORT WING INCLUDED) | | | | | |
|---|------|------|------|----------------|-------------------|
| MARK | SIZE | QTY. | FORM | LENGTH | REMARKS |
| WD1 | #9 | 38 | BNT | 8'-4" | |
| WH1 | #4 | 2 | STR | 28'-4" | |
| WH2 | #4 | 18 | STR | 14'-9" AVG. | 3'-5" TO 26'-1" |
| WH3 | #5 | 2 | STR | 28'-9" | |
| WH4 | #4 | 2 | STR | 56'-6" | |
| WH5 | #4 | 18 | STR | 28'-10" AVG. | 5'-10" TO 51'-10" |
| WH6 | #5 | 2 | STR | 56'-2" | |
| WL1 | #6 | 22 | BNT | 12'-9" | |
| WL2 | #5 | 74 | BNT | 10'-0" | |
| WL3 | #5 | 8 | BNT | 4'-7 1/2" AVG. | 3'-5" TO 5'-10" |
| WL4 | #5 | 18 | BNT | 4'-8 1/2" AVG. | 3'-3" TO 6'-2" |
| WT1 | #4 | 61 | STR | 2'-10" | |
| WT2 | #4 | 5 | STR | 10'-0" | |
| WT3 | #4 | 19 | STR | 6'-8" AVG. | 3'-6" TO 9'-10" |
| WT4 | #4 | 8 | STR | 2'-7 1/2" AVG. | 1'-5" TO 3'-10" |
| WT5 | #4 | 37 | STR | 6'-9 1/2" AVG. | 3'-8" TO 9'-11" |
| WT6 | #4 | 18 | STR | 2'-8 1/2" AVG. | 1'-3" TO 4'-2" |
| WV1 | #5 | 4 | STR | 10'-0" | |
| WV2 | #5 | 19 | STR | 6'-8" AVG. | 3'-6" TO 9'-10" |
| WV3 | #5 | 37 | STR | 6'-9 1/2" AVG. | 3'-8" TO 9'-11" |
| U1 | #4 | 2 | BNT | 2'-8" | |

HEADWALL BAR LIST

| ONE HEADWALL SHOWN | | | | | | | | | | | | | | | | | | | | | | |
|--------------------|------|---------|------|--------|----|----------|--------|--------|----|----------|------|--------|--------|----------|------|----------|--|----------|------|--------|--|--|
| MARK | FORM | 8' SPAN | | | | 10' SPAN | | | | 12' SPAN | | | | 14' SPAN | | | | 16' SPAN | | | | |
| | | SIZE | QTY. | LENGTH | | SIZE | QTY. | LENGTH | | SIZE | QTY. | LENGTH | | SIZE | QTY. | LENGTH | | SIZE | QTY. | LENGTH | | |
| CH | STR | #4 | 4 | 32'-6" | #6 | 4 | 39'-6" | #6 | 4 | 46'-5" | #6 | 4 | 53'-4" | #8 | 4 | 66'-3" ⑧ | | | | | | |
| CL1 | BNT | #4 | 33 | 4'-4" | #5 | 40 | 4'-4" | #5 | 47 | 4'-4" | #5 | 54 | 4'-4" | #5 | 61 | 4'-4" | | | | | | |
| CL2 | BNT | #4 | 33 | 4'-3" | #5 | 40 | 4'-3" | #5 | 47 | 4'-3" | #5 | 54 | 4'-3" | #5 | 61 | 4'-3" | | | | | | |
| HD | STR | #6 | 2 | 32'-6" | #8 | 2 | 39'-6" | #8 | 2 | 46'-5" | #8 | 2 | 53'-4" | #9 | 2 | 66'-3" ⑧ | | | | | | |

APPROVED BY BRIDGE ENGINEER *Scott J. Smith* DATE 4/2/10

OKLAHOMA DEPT. OF TRANSPORTATION
BRIDGE STANDARD (ENGLISH)
 RCB CULVERTS - END SECTION DETAILS
 TRIPLE CELL - 8'-0" HEIGHT - 30°
 SHEET NO. 3 OF 3

2009 SPECIFICATIONS RCB-E3-H8-30-3 01E B-764E