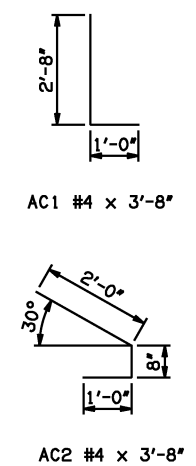


APRON BAR LIST

ONE APRON SHOWN

MARK	SIZE	FORM	8' SPAN		10' SPAN		12' SPAN		14' SPAN		16' SPAN			
			QTY.	LENGTH	REMARKS	QTY.	LENGTH	REMARKS	QTY.	LENGTH	REMARKS	QTY.	LENGTH	REMARKS
AC1	#4	BNT	2	3'-8"		2	3'-8"	2	3'-8"	2	3'-8"	2	3'-8"	
AC2	#4	BNT	2	3'-8"		2	3'-8"	2	3'-8"	2	3'-8"	2	3'-8"	
AD1	#4	STR	2	57'-6"		2	57'-6"	2	57'-6"	2	57'-6"	2	57'-6"	
AL1	#4	STR	62	31'-9"		76	31'-9"	90	31'-9"	104	31'-9"	118	31'-9"	
AL2	#4	STR	92	15'-5 1/2" AVG.	2'-6" TO 28'-5"	92	15'-5 1/2" AVG.	2'-6" TO 28'-5"	92	15'-5 1/2" AVG.	2'-6" TO 28'-5"	92	15'-5 1/2" AVG.	2'-6" TO 28'-5"
AL3	#4	STR	4	29'-9"		4	29'-9"	4	29'-9"	4	29'-9"	4	29'-9"	
AT1	#4	STR	4	83'-0"		4	89'-11"	4	96'-10"	4	103'-10"	4	110'-9"	
AT2	#4	STR	12	72'-9" AVG.	63'-3" TO 82'-3"	16	76'-2 1/2" AVG.	63'-3" TO 89'-2"	20	79'-8" AVG.	63'-3" TO 96'-1"	24	83'-2" AVG.	63'-3" TO 103'-1"
AT3	#5	STR	12	72'-9" AVG.	63'-3" TO 82'-3"	16	76'-2 1/2" AVG.	63'-3" TO 89'-2"	20	79'-8" AVG.	63'-3" TO 96'-1"	24	83'-2" AVG.	63'-3" TO 103'-1"
AT4	#4	STR	17	45'-1 1/2" AVG.	31'-3" TO 59'-0"	13	48'-7" AVG.	38'-2" TO 59'-0"	9	52'-1" AVG.	45'-2" TO 59'-0"	5	55'-6 1/2" AVG.	52'-1" TO 59'-0"
AT5	#5	STR	17	45'-1 1/2" AVG.	31'-3" TO 59'-0"	13	48'-7" AVG.	38'-2" TO 59'-0"	9	52'-1" AVG.	45'-2" TO 59'-0"	5	55'-6 1/2" AVG.	52'-1" TO 59'-0"

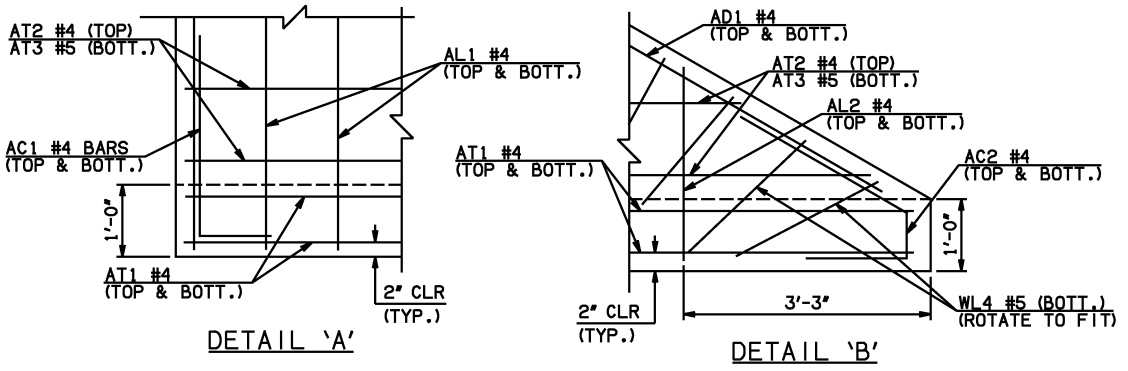


- ① INCLUDES 2'-6" LAP
- ② QUANTITY SHOWN REPRESENTS TWO SETS.

NOTE: SEE END SECTION DETAILS SHEET NO. 2 OF 3 FOR VARIABLE REINFORCING QUANTITIES.

END SECTION VARIABLE DIMENSIONS

SPAN	W	A	B	C	CW	D	E	F	G	H	LW	R	SW
8'	12"	11'-0"	2'-11"	4'-0 3/4"	80'-10 3/4"	4'-0"	19'-1"	20'-0 3/4"	20'-0"	32'-11"	56'-1 3/4"	28'-0"	28'-11 1/4"
10'	12"	12'-0"	2'-2 1/4"	3'-4"	87'-9 3/4"	3'-3/4"	21'-9 3/4"	22'-9 3/4"	22'-8 3/4"	39'-10"	56'-1 3/4"	34'-0"	28'-11 1/4"
12'	12"	14'-0"	2'-5 1/2"	3'-7 1/4"	94'-9"	3'-6 1/4"	25'-6 1/2"	26'-6 1/2"	26'-5 3/4"	46'-9 1/4"	56'-1 3/4"	40'-0"	28'-11 1/4"
14'	12"	16'-0"	2'-8 3/4"	3'-10 1/4"	101'-8"	3'-9 1/2"	29'-3 1/4"	30'-3 1/4"	30'-2 1/2"	53'-8 1/4"	56'-1 3/4"	46'-0"	28'-11 1/4"
16'	13"	18'-0"	2'-11 1/4"	4'-3 1/4"	108'-7 1/4"	4'-0 3/4"	33'-0 3/4"	34'-1 1/4"	33'-11 1/4"	60'-9 3/4"	55'-11 3/4"	52'-2"	28'-9 1/4"



APPROVED BY BRIDGE ENGINEER *Scott Lusk* DATE 4/2/10

OKLAHOMA DEPT. OF TRANSPORTATION
BRIDGE STANDARD (ENGLISH)
 RCB CULVERTS - END SECTION DETAILS
 TRIPLE CELL - 8'-0" HEIGHT - 30°
 SHEET NO. 1 OF 3

2009 SPECIFICATIONS | RCB-E3-H8-30-1 | 01E | B-762E