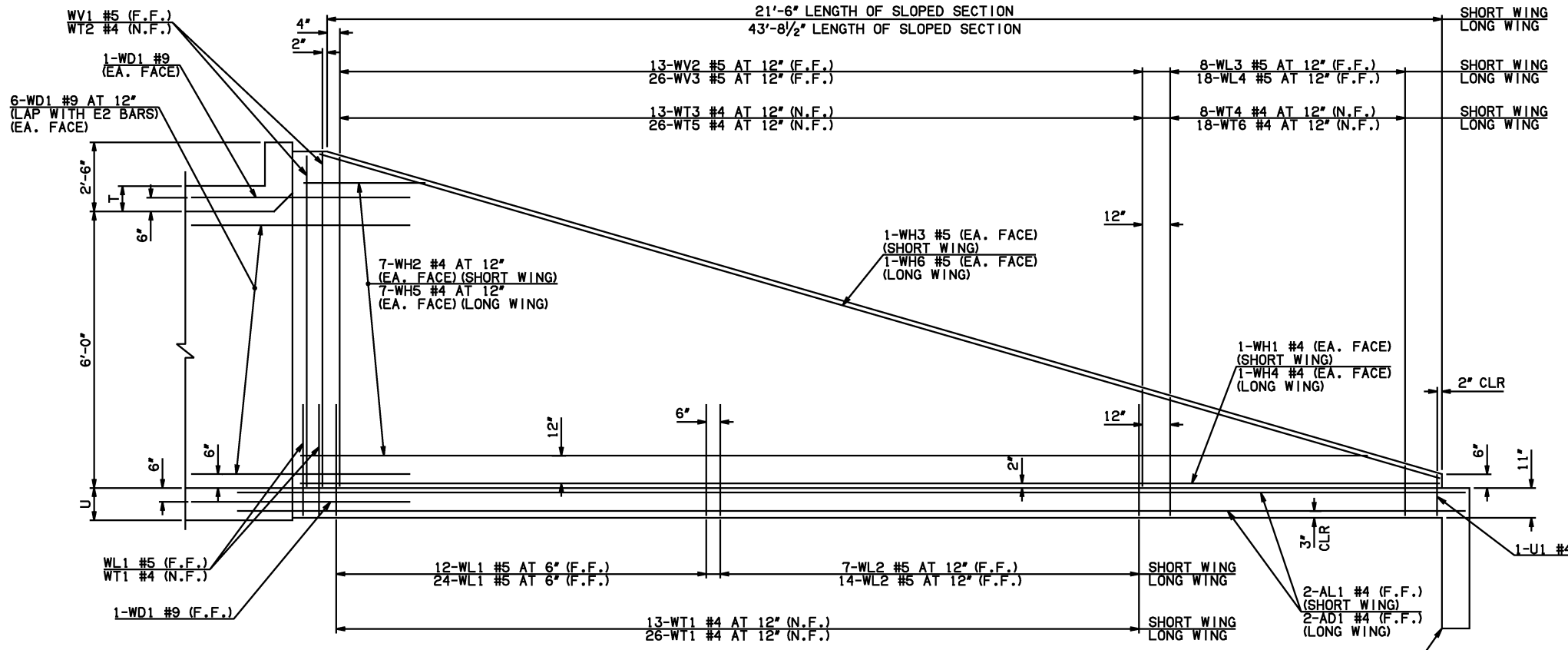
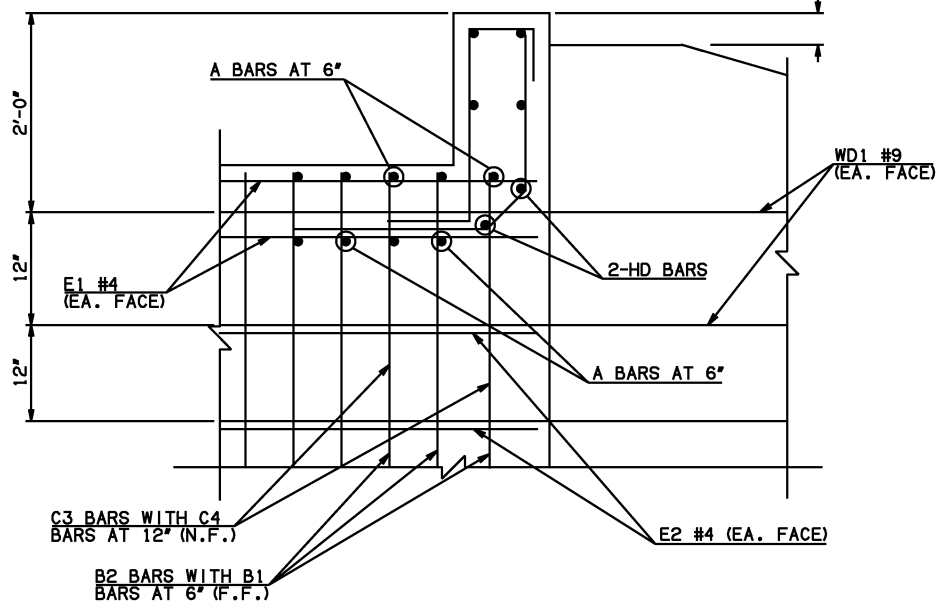


| DESCRIPTION | REVISIONS | DATE |
|-------------|-----------|------|
| | | |

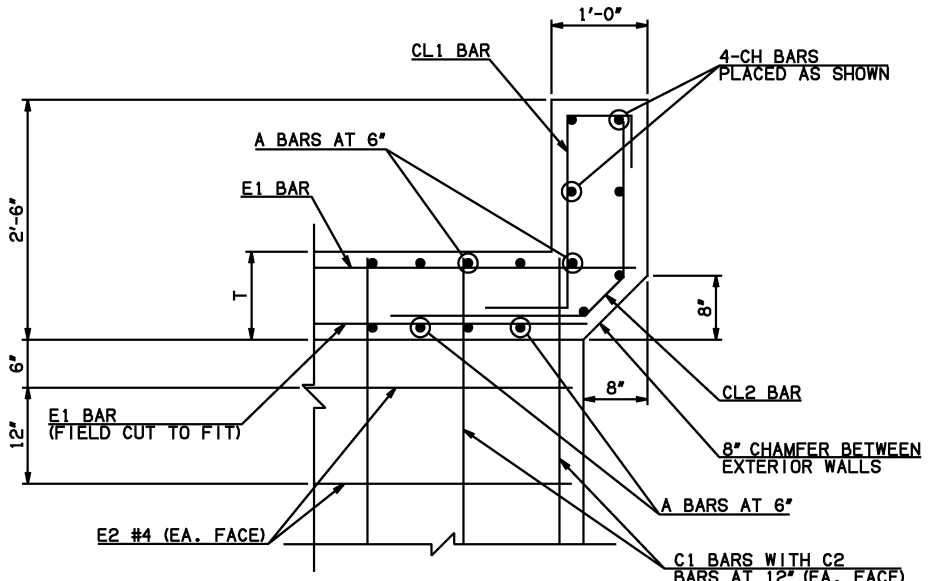


NOTE: F.F. = FAR FACE
N.F. = NEAR FACE

WING ELEVATION

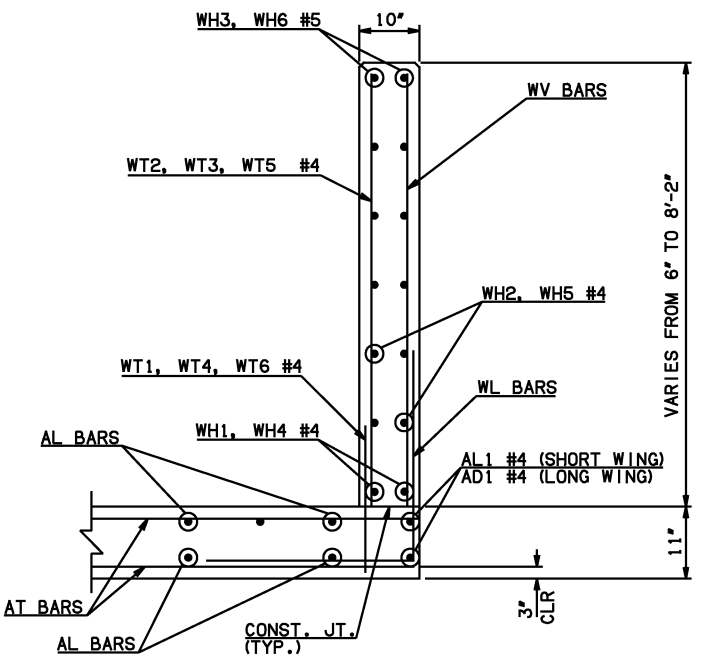


③ HEADWALL DETAIL AT EXTERIOR WALL

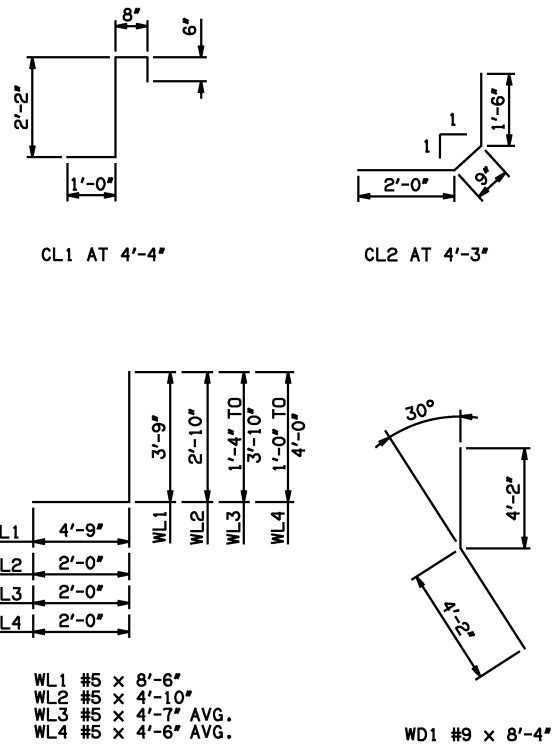


③ HEADWALL DETAIL AT INTERIOR WALL

NOTES:
② QUANTITY SHOWN REPRESENTS TWO SETS.
③ FOR FURTHER INFORMATION REGARDING END SECTION BARS A, B, C, E1, AND E2, REFER TO RCB CULVERT - BARREL DETAILS.



TYPICAL SECTION THRU WING



| WINGWALL BAR LIST (LONG AND SHORT WING INCLUDED) | | | | | |
|---|------|------|------|-----------------|------------------|
| MARK | SIZE | QTY. | FORM | LENGTH | REMARKS |
| WD1 | #9 | 30 | BNT | 8'-4" | |
| WH1 | #4 | 2 | STR | 22'-4" | |
| ② WH2 | #4 | 14 | STR | 11'-8" AVG. | 3'-3" TO 20'-1" |
| WH3 | #5 | 2 | STR | 22'-7" | |
| WH4 | #4 | 2 | STR | 44'-6" | |
| ② WH5 | #4 | 14 | STR | 22'-9 1/2" AVG. | 5'-8" TO 39'-11" |
| WH6 | #5 | 2 | STR | 44'-2" | |
| WL1 | #5 | 40 | BNT | 8'-6" | |
| WL2 | #5 | 21 | BNT | 4'-10" | |
| WL3 | #5 | 8 | BNT | 4'-7" AVG. | 3'-4" TO 5'-10" |
| WL4 | #5 | 18 | BNT | 4'-6" AVG. | 3'-0" TO 6'-0" |
| WT1 | #4 | 44 | STR | 2'-10" | |
| WT2 | #4 | 5 | STR | 8'-0" | |
| WT3 | #4 | 13 | STR | 5'-8 1/2" AVG. | 3'-7" TO 7'-10" |
| WT4 | #4 | 8 | STR | 2'-7" AVG. | 1'-4" TO 3'-10" |
| WT5 | #4 | 26 | STR | 5'-8 1/2" AVG. | 3'-6" TO 7'-11" |
| WT6 | #4 | 18 | STR | 2'-6" AVG. | 1'-0" TO 4'-0" |
| WV1 | #5 | 4 | STR | 8'-0" | |
| WV2 | #5 | 13 | STR | 5'-8 1/2" AVG. | 3'-7" TO 7'-10" |
| WV3 | #5 | 26 | STR | 5'-8 1/2" AVG. | 3'-6" TO 7'-11" |
| U1 | #4 | 2 | BNT | 2'-6" | |

| HEADWALL BAR LIST | | | | | | | | | | | | | |
|--------------------|------|---------|------|--------|---------|------|--------|----------|------|--------|----------|------|--------|
| ONE HEADWALL SHOWN | | | | | | | | | | | | | |
| MARK | FORM | 6' SPAN | | | 8' SPAN | | | 10' SPAN | | | 12' SPAN | | |
| | | SIZE | QTY. | LENGTH | SIZE | QTY. | LENGTH | SIZE | QTY. | LENGTH | SIZE | QTY. | LENGTH |
| CH | STR | #4 | 4 | 25'-7" | #4 | 4 | 32'-6" | #6 | 4 | 39'-6" | #6 | 4 | 46'-5" |
| CL1 | BNT | #4 | 26 | 4'-4" | #4 | 33 | 4'-4" | #5 | 40 | 4'-4" | #5 | 47 | 4'-4" |
| CL2 | BNT | #4 | 26 | 4'-3" | #4 | 33 | 4'-3" | #5 | 40 | 4'-3" | #5 | 47 | 4'-3" |
| HD | STR | #6 | 2 | 25'-7" | #6 | 2 | 32'-6" | #8 | 2 | 39'-6" | #8 | 2 | 46'-5" |

APPROVED BY BRIDGE ENGINEER *Scott Lueck* DATE 4/2/10

OKLAHOMA DEPT. OF TRANSPORTATION
BRIDGE STANDARD (ENGLISH)
 RCB CULVERTS - END SECTION DETAILS
 TRIPLE CELL - 6'-0" HEIGHT - 30°
 SHEET NO. 3 OF 3

2009 SPECIFICATIONS RCB-E3-H6-30-3 01E B-758E