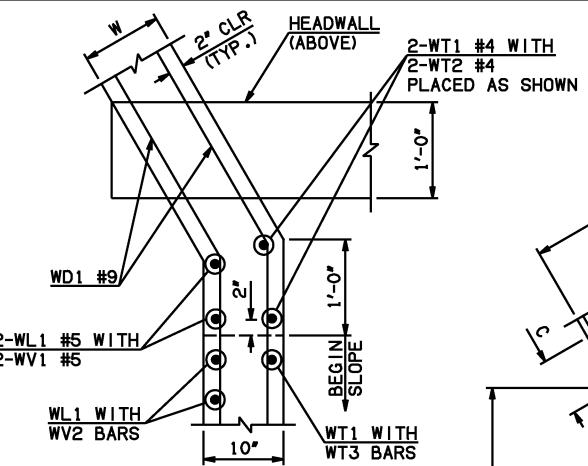
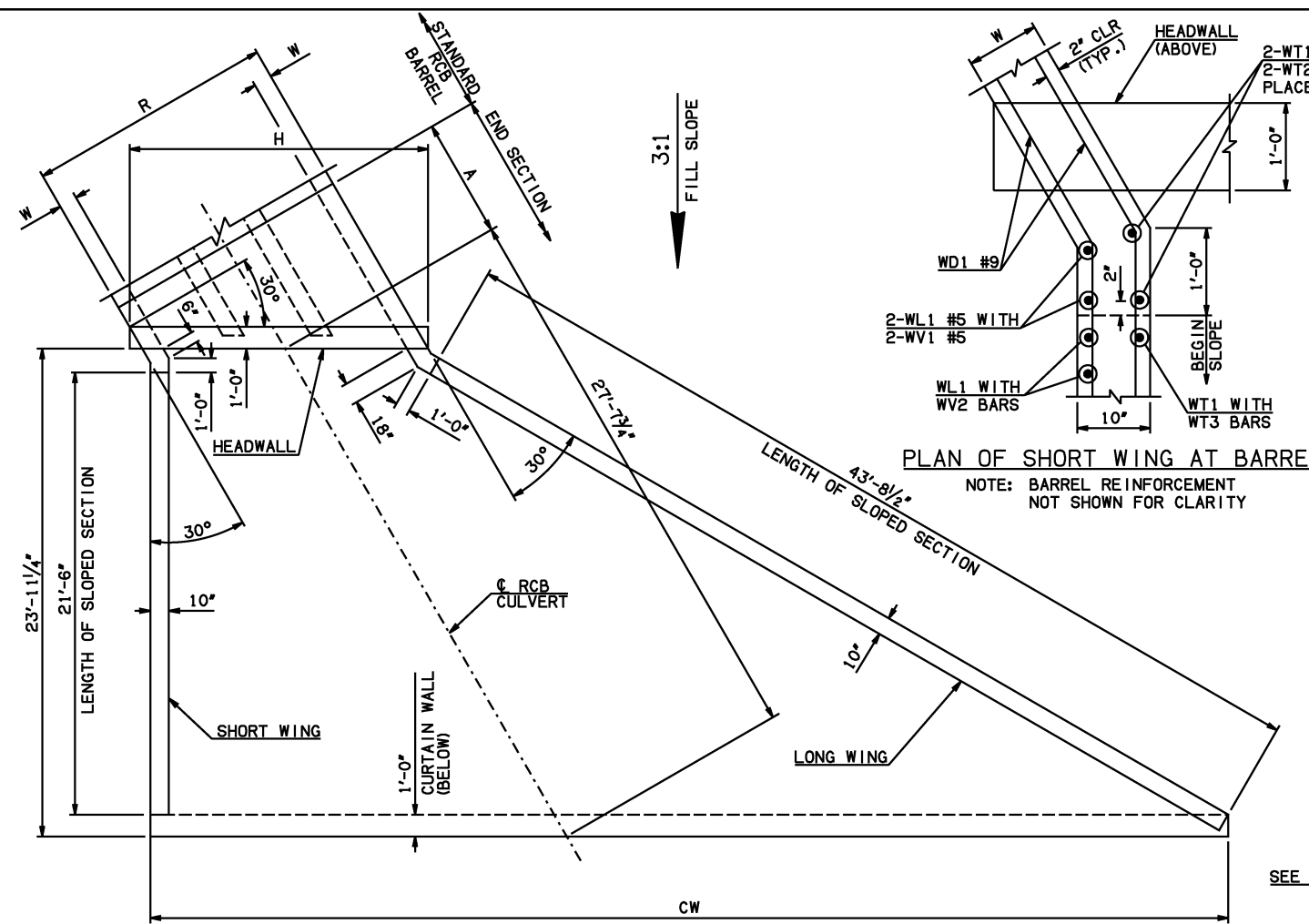
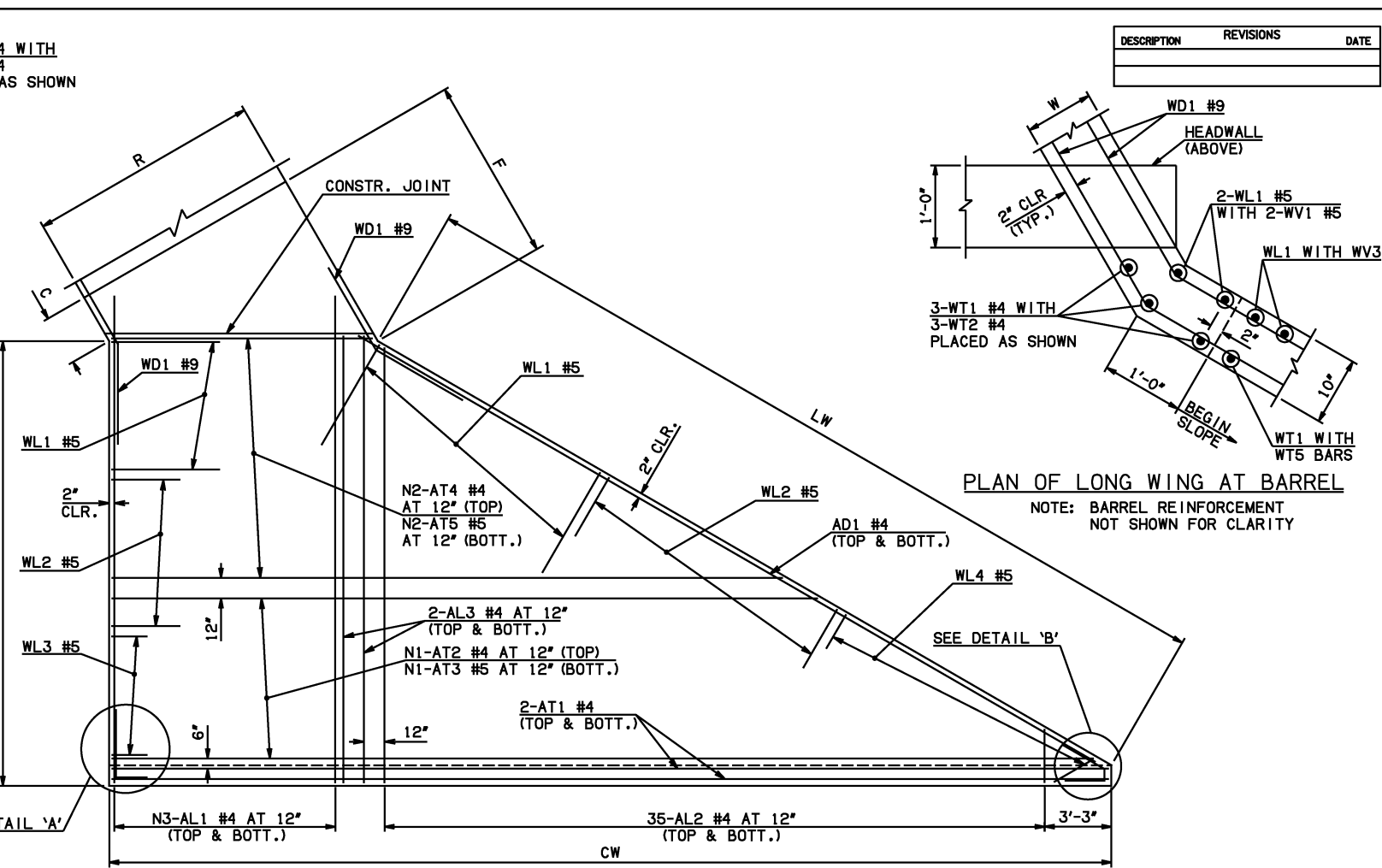


DESCRIPTION	REVISIONS	DATE



PLAN OF SHORT WING AT BARREL
NOTE: BARREL REINFORCEMENT NOT SHOWN FOR CLARITY



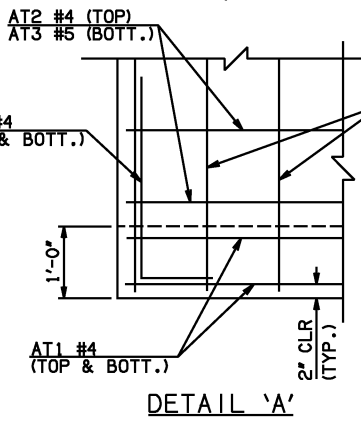
PLAN OF LONG WING AT BARREL
NOTE: BARREL REINFORCEMENT NOT SHOWN FOR CLARITY

END SECTION PLAN

NOTE: SEE END SECTION DETAILS SHEET NO. 2 OF 3 FOR VARIABLE REINFORCING QUANTITIES.

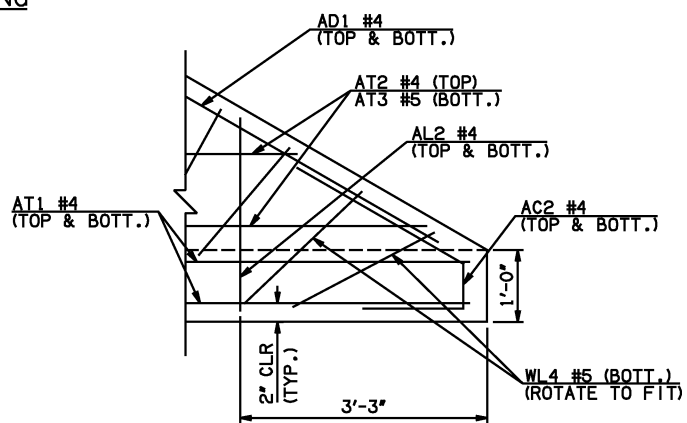
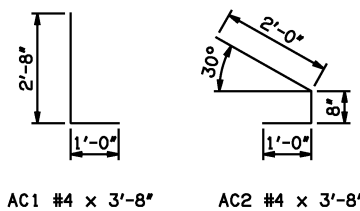
END SECTION VARIABLE DIMENSIONS

SPAN	W	A	B	C	CW	D	E	F	G	H	LW	R	SW
6'	12"	9'-0"	2'-7 3/4"	3'-9 1/2"	63'-6 3/4"	3'-8 3/4"	15'-4 1/4"	16'-4"	16'-3 1/4"	25'-11 3/4"	44'-1 3/4"	22'-0"	22'-11 1/4"
8'	12"	11'-0"	2'-11"	4'-0 3/4"	70'-6"	4'-0"	19'-1"	20'-0 3/4"	20'-0"	32'-11"	44'-1 3/4"	28'-0"	22'-11 1/4"
10'	12"	12'-0"	2'-2 1/4"	3'-4"	77'-5"	3'-3 1/4"	21'-9 3/4"	22'-9 3/4"	39'-10"	44'-1 3/4"	34'-0"	34'-0"	22'-11 1/4"
12'	12"	14'-0"	2'-5 1/2"	3'-7 1/4"	84'-4 1/4"	3'-6 1/4"	25'-6 1/2"	26'-6 1/2"	26'-5 3/4"	46'-9 1/4"	44'-1 3/4"	40'-0"	22'-11 1/4"



DETAIL 'A'

APRON REINFORCING



DETAIL 'B'

- ① INCLUDES 2'-6" LAP
- ② QUANTITY SHOWN REPRESENTS TWO SETS.

APRON BAR LIST

MARK	SIZE	FORM	ONE APRON SHOWN										
			6' SPAN		8' SPAN		10' SPAN		12' SPAN				
QTY.	LENGTH	REMARKS	QTY.	LENGTH	REMARKS	QTY.	LENGTH	REMARKS	QTY.	LENGTH	REMARKS		
AC1	#4	BNT	2	3'-8"		2	3'-8"		2	3'-8"		2	3'-8"
AC2	#4	BNT	2	3'-8"		2	3'-8"		2	3'-8"		2	3'-8"
AD1	#4	STR	2	45'-6"		2	45'-6"		2	45'-6"		2	45'-6"
AL1	#4	STR	48	25'-9"		62	25'-9"		76	25'-9"		90	25'-9"
AL2	#4	STR	70	12'-3 1/2" AVG.	2'-6" TO 22'-1"	70	12'-3 1/2" AVG.	2'-6" TO 22'-1"	70	12'-3 1/2" AVG.	2'-6" TO 22'-1"	70	12'-3 1/2" AVG.
AL3	#4	STR	4	23'-9"		4	23'-9"		4	23'-9"		4	23'-9"
AT1	#4	STR	4	65'-8"		4	72'-7"		4	79'-7"		4	86'-6"
AT2	#4	STR	2	64'-1" AVG.	63'-3" TO 64'-11"	6	67'-6 1/2" AVG.	63'-3" TO 71'-10"	10	71'-0 1/2" AVG.	63'-3" TO 78'-10"	14	74'-6" AVG.
AT3	#5	STR	2	64'-1" AVG.	63'-3" TO 64'-11"	6	67'-6 1/2" AVG.	63'-3" TO 71'-10"	10	71'-0 1/2" AVG.	63'-3" TO 78'-10"	14	74'-6" AVG.
AT4	#4	STR	21	41'-8" AVG.	24'-4" TO 59'-0"	17	45'-1 1/2" AVG.	31'-3" TO 59'-0"	13	48'-7" AVG.	38'-2" TO 59'-0"	9	52'-1" AVG.
AT5	#5	STR	21	41'-8" AVG.	24'-4" TO 59'-0"	17	45'-1 1/2" AVG.	31'-3" TO 59'-0"	13	48'-7" AVG.	38'-2" TO 59'-0"	9	52'-1" AVG.

APPROVED BY BRIDGE ENGINEER *Scott J. Smith* DATE 4/2/10

OKLAHOMA DEPT. OF TRANSPORTATION
BRIDGE STANDARD (ENGLISH)
 RCB CULVERTS - END SECTION DETAILS
 TRIPLE CELL - 6'-0" HEIGHT - 30°
 SHEET NO. 1 OF 3

2009 SPECIFICATIONS | RCB-E3-H6-30-1 | 01E | B-756E