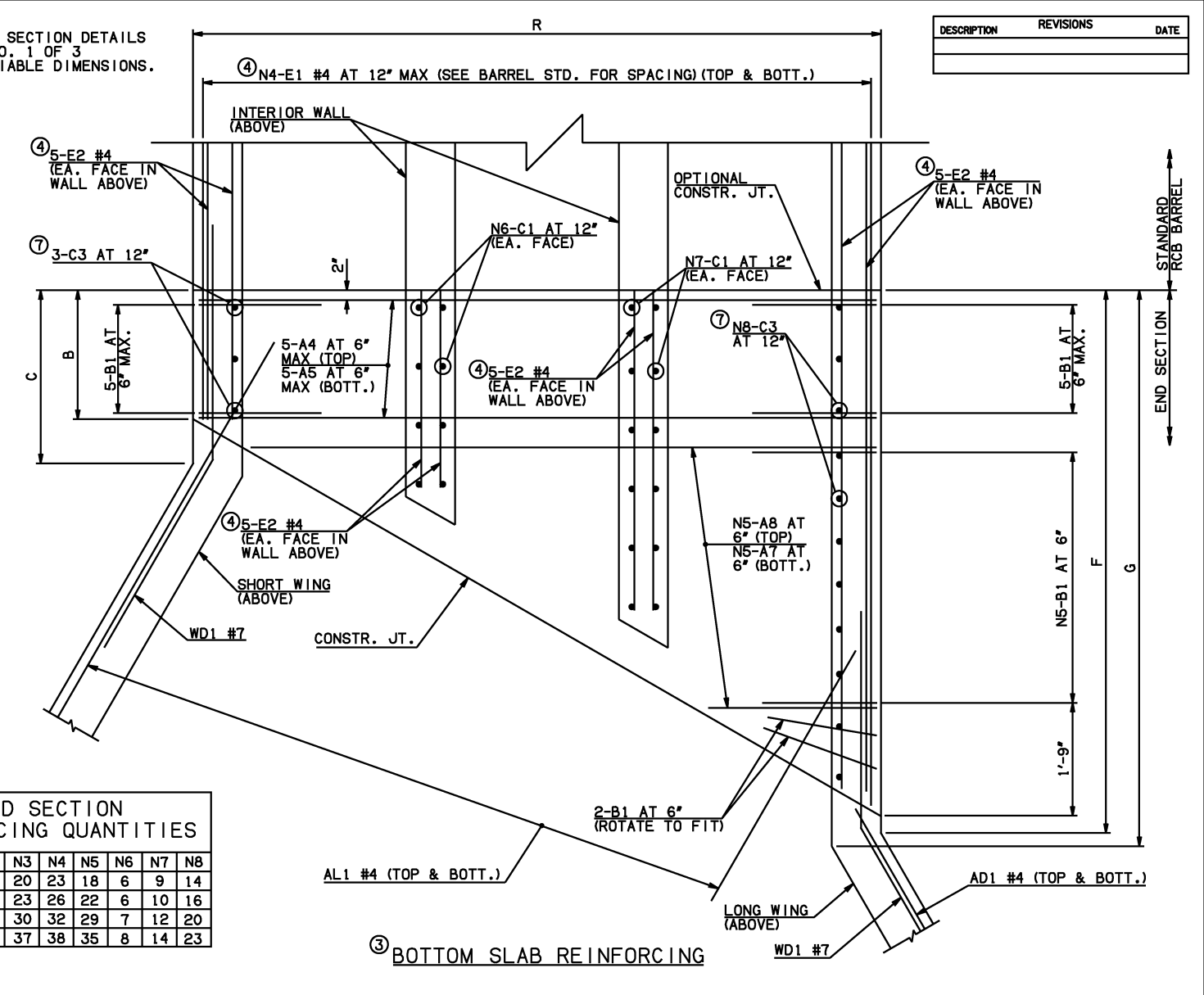


NOTE: SEE END SECTION DETAILS SHEET NO. 1 OF 3 FOR VARIABLE DIMENSIONS.



END SECTION REINFORCING QUANTITIES

SPAN	N1	N2	N3	N4	N5	N6	N7	N8
5'	20	0	20	23	18	6	9	14
6'	20	0	23	26	22	6	10	16
8'	3	17	30	32	29	7	12	20
10'	7	13	37	38	35	8	14	23

END CONNECTION BAR LIST (VARIABLE QUANTITIES AND LENGTHS)

MARK	FORM	ONE END CONNECTION SHOWN												
		5' SPAN			6' SPAN			8' SPAN			10' SPAN			
		SIZE	QTY.	LENGTH	REMARKS	SIZE	QTY.	LENGTH	REMARKS	SIZE	QTY.	LENGTH	REMARKS	
	A4	STR	#5	10	18'-0"	#5	10	21'-0"	#6	10	27'-0"	#6	10	33'-0"
	A5	STR	#5	10	18'-0"	#6	10	21'-0"	#6	10	27'-0"	#7	10	33'-0"
	A6	STR	#6	18	8'-8 1/2" AVG.	1'-4" TO 16'-1"	#6	22	10'-5" AVG.	1'-4" TO 19'-6"	#7	29	13'-5 1/2" AVG.	1'-4" TO 25'-7"
②	A7	STR	#5	36	9'-10 1/2" AVG.	2'-6" TO 17'-3"	#6	44	11'-7" AVG.	2'-6" TO 20'-8"	#7	58	14'-7 1/2" AVG.	2'-6" TO 26'-9"
	A8	STR	#6	18	9'-10 1/2" AVG.	2'-6" TO 17'-3"	#6	22	11'-7" AVG.	2'-6" TO 20'-8"	#7	29	14'-7 1/2" AVG.	2'-6" TO 26'-9"
	B1	BNT	#5	30	4'-0"	#4	34	3'-1"	#5	41	4'-2"	#6	47	4'-11"
	B2	BNT	#5	30	7'-4"	#4	34	6'-9"	#5	41	7'-6"	#6	47	7'-11"
	C1	STR	#4	30	2'-0"	#4	32	2'-0"	#4	38	2'-1"	#4	44	2'-2"
	C2	STR	#4	30	5'-8"	#4	32	5'-8"	#4	38	5'-9"	#4	44	5'-10"
⑦	C3	STR	#4	17	2'-0"	#4	19	2'-0"	#4	23	2'-1"	#4	26	2'-2"
⑦	C4	STR	#4	17	5'-8"	#4	19	5'-8"	#4	23	5'-9"	#4	26	5'-10"
⑤	E1	STR	#4	92	7'-9 1/2" AVG.	2'-7" TO 13'-0"	#4	104	8'-9" AVG.	2'-8" TO 14'-10"	#4	128	9'-9 1/2" AVG.	2'-0" TO 17'-7"
⑥	E2	STR	#4	40	7'-3" AVG.	2'-7", 5'-2", 8'-6", 12'-8"	#4	40	8'-3" AVG.	2'-8", 5'-11", 9'-10", 14'-6"	#4	40	9'-3" AVG.	2'-0", 6'-4", 11'-5", 17'-3"

QUANTITIES

ITEM	UNIT	5' SPAN	6' SPAN	8' SPAN	10' SPAN
CLASS AA CONCRETE	CY	47.50	53.50	65.80	83.20
REINFORCING STEEL	LB	6930.00	8000.00	11350.00	15690.00

NOTE: QUANTITIES ABOVE ARE FOR ONE END SECTION, WHICH IS COMPRISED OF ONE END CONNECTION, ONE HEADWALL, ONE APRON, AND TWO WINGWALLS.

- NOTES:
- ② QUANTITY SHOWN REPRESENTS TWO SETS.
  - ③ FOR FURTHER INFORMATION REGARDING END SECTION A, B, C, AND E BARS REFER TO RCB CULVERT - BARREL DETAILS.
  - ④ LENGTHS OF E1 & E2 BARS SHOWN ARE ADDITIONAL LENGTHS REQUIRED FOR THE END SECTION. LAP SPLICES, AS REQUIRED, SHALL BE IN ACCORDANCE WITH RCB BARREL STANDARD NOTES.
  - ⑤ 4-SETS OF N4-E1 BARS REQUIRED
  - ⑥ 4-SETS OF 10-E2 BARS REQUIRED WITH LENGTHS AS SHOWN CORRESPONDING TO SHORT EXTERIOR WALL, INTERIOR WALLS, AND LONG EXTERIOR WALL.
  - ⑦ C3 AND C4 BAR SIZE AND SPACING MAY DIFFER FROM BARREL SECTION.

APPROVED BY BRIDGE ENGINEER *Scott Lueck* DATE 4/2/10

**OKLAHOMA DEPT. OF TRANSPORTATION**  
**BRIDGE STANDARD (ENGLISH)**  
 RCB CULVERTS - END SECTION DETAILS  
 TRIPLE CELL - 5'-0" HEIGHT - 30"  
 SHEET NO. 2 OF 3

2009 SPECIFICATIONS | RCB-E3-H5-30-2 | 01E | B-754E