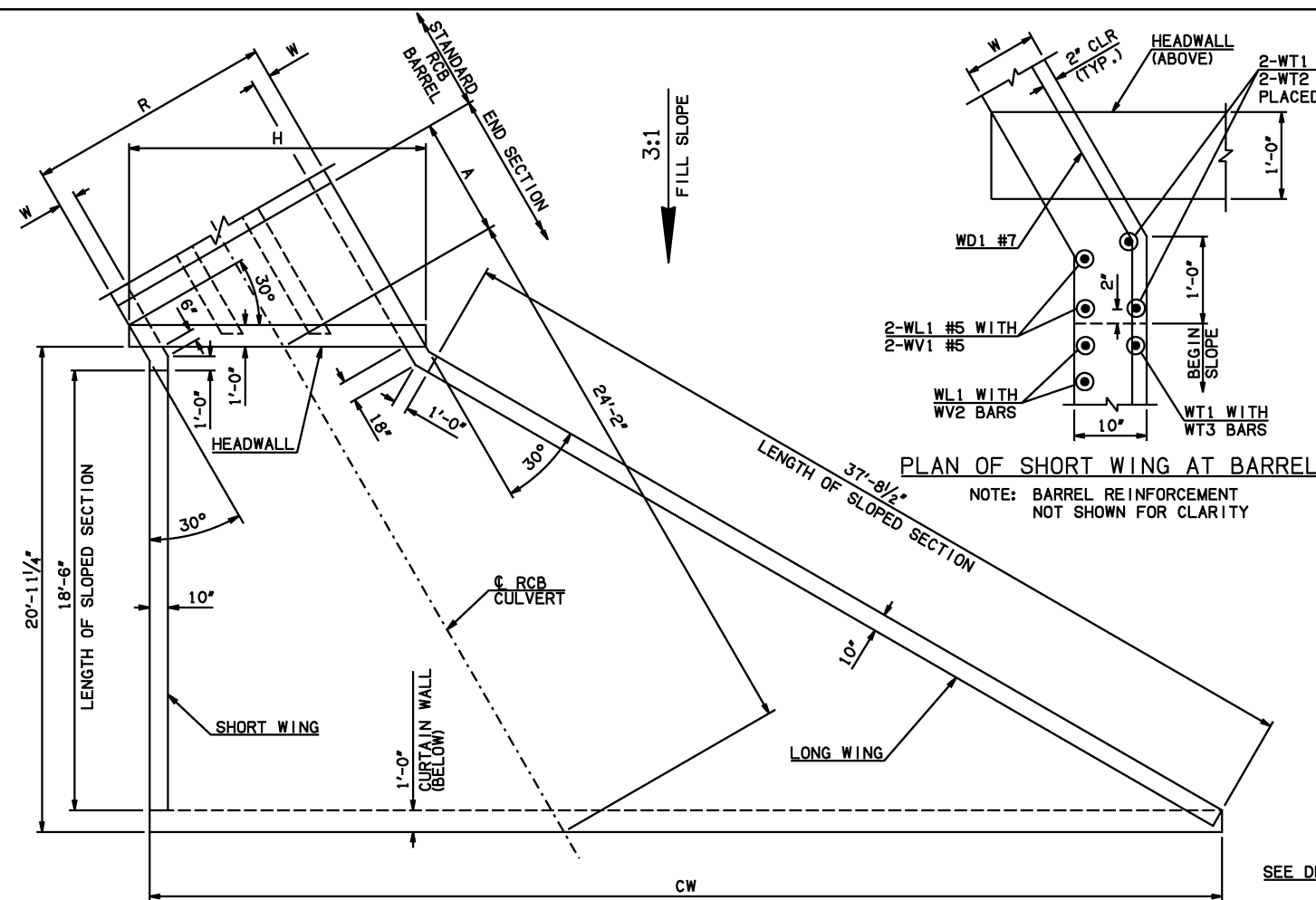
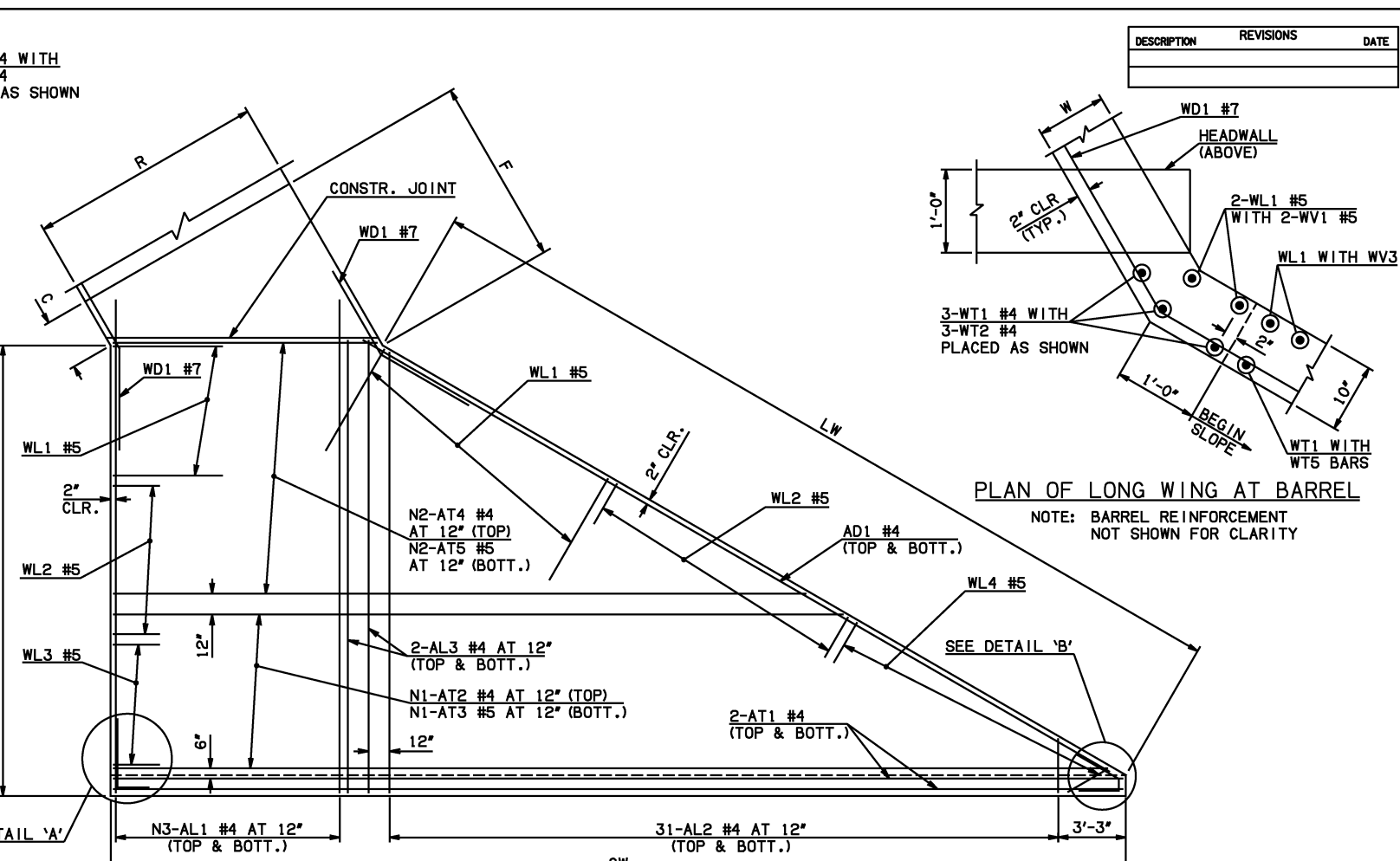


DESCRIPTION	REVISIONS	DATE



END SECTION PLAN

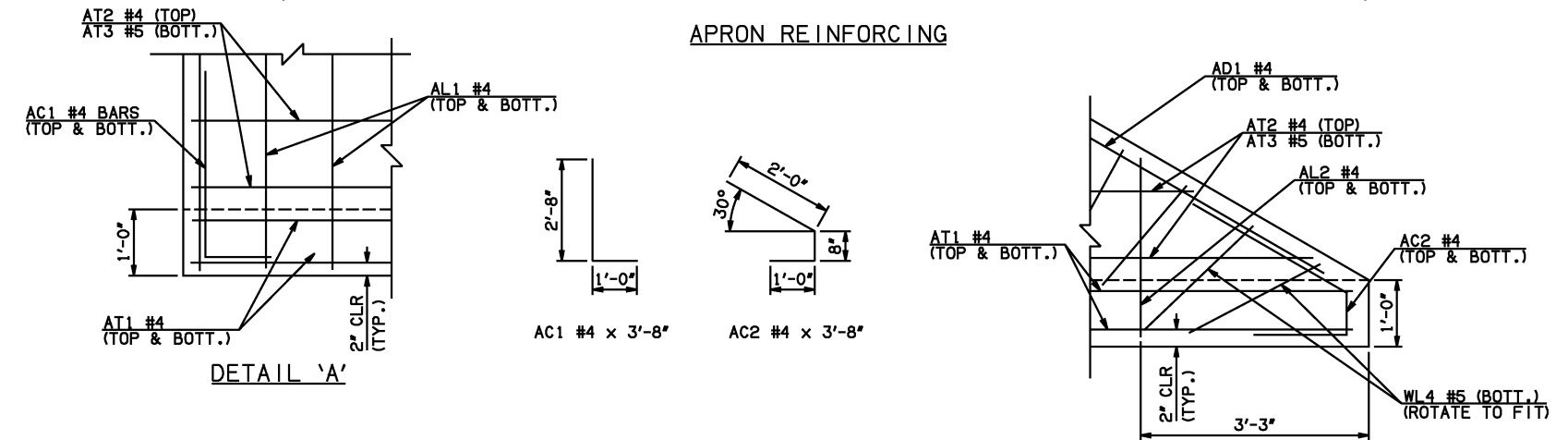
NOTE: SEE END SECTION DETAILS SHEET NO. 2 OF 3 FOR VARIABLE REINFORCING QUANTITIES.



PLAN OF LONG WING AT BARREL

NOTE: BARREL REINFORCEMENT NOT SHOWN FOR CLARITY

APRON REINFORCING



DETAIL 'A'

DETAIL 'B'

END SECTION VARIABLE DIMENSIONS													
SPAN	W	A	B	C	CW	D	E	F	G	H	LW	R	SW
5'	10"	8'-0"	2'-8 $\frac{1}{2}$ "	3'-5 $\frac{1}{2}$ "	54'-6 $\frac{1}{4}$ "	3'-8 $\frac{1}{4}$ "	13'-3 $\frac{1}{2}$ "	14'-1"	14'-3 $\frac{3}{4}$ "	21'-9"	38'-5 $\frac{3}{4}$ "	18'-4"	20'-3 $\frac{1}{4}$ "
6'	10"	9'-0"	2'-10"	3'-7 $\frac{1}{4}$ "	57'-11 $\frac{3}{4}$ "	3'-9 $\frac{3}{4}$ "	15'-2"	15'-11 $\frac{1}{2}$ "	16'-2 $\frac{1}{4}$ "	25'-2 $\frac{1}{2}$ "	38'-5 $\frac{3}{4}$ "	21'-4"	20'-3 $\frac{1}{4}$ "
8'	10"	10'-0"	2'-1 $\frac{1}{4}$ "	2'-10 $\frac{1}{2}$ "	64'-11"	3'-1"	17'-10 $\frac{3}{4}$ "	18'-8 $\frac{1}{4}$ "	18'-11"	32'-1 $\frac{3}{4}$ "	38'-5 $\frac{3}{4}$ "	27'-4"	20'-3 $\frac{1}{4}$ "
10'	10"	12'-0"	2'-4 $\frac{1}{2}$ "	3'-1 $\frac{1}{2}$ "	71'-10"	3'-4 $\frac{1}{4}$ "	21'-7 $\frac{1}{2}$ "	22'-5"	22'-7 $\frac{3}{4}$ "	39'-0 $\frac{3}{4}$ "	38'-5 $\frac{3}{4}$ "	33'-4"	20'-3 $\frac{1}{4}$ "

APRON BAR LIST

APRON BAR LIST														
ONE APRON SHOWN														
MARK	SIZE	FORM	5' SPAN			6' SPAN			8' SPAN			10' SPAN		
			QTY.	LENGTH	REMARKS	QTY.	LENGTH	REMARKS	QTY.	LENGTH	REMARKS	QTY.	LENGTH	REMARKS
AC1	#4	BNT	2	3'-8"		2	3'-8"		2	3'-8"		2	3'-8"	
AC2	#4	BNT	2	3'-8"		2	3'-8"		2	3'-8"		2	3'-8"	
AD1	#4	STR	2	39'-6"		2	39'-6"		2	39'-6"		2	39'-6"	
AL1	#4	STR	40	22'-9"		46	22'-9"		60	22'-9"		74	22'-9"	
AL2	#4	STR	62	11'-2" AVG.	2'-6" TO 19'-10"	62	11'-2" AVG.	2'-6" TO 19'-10"	62	11'-2" AVG.	2'-6" TO 19'-10"	62	11'-2" AVG.	2'-6" TO 19'-10"
AL3	#4	STR	4	20'-9"		4	20'-9"		4	20'-9"		4	20'-9"	
AT1	#4	STR	4	54'-2"		4	57'-7"		4	67'-0"	①	4	74'-0"	①
AT2	#4	STR	20	36'-11 $\frac{1}{2}$ " AVG.	20'-6" TO 53'-5"	20	40'-4 $\frac{1}{2}$ " AVG.	23'-11" TO 56'-10"	3	64'-7" AVG.	①	7	68'-0 $\frac{1}{2}$ " AVG.	①
AT3	#5	STR	20	36'-11 $\frac{1}{2}$ " AVG.	20'-6" TO 53'-5"	20	40'-4 $\frac{1}{2}$ " AVG.	23'-11" TO 56'-10"	3	64'-7" AVG.	①	7	68'-0 $\frac{1}{2}$ " AVG.	①
AT4	#4	STR	0			0			17	44'-9" AVG.		13	48'-2 $\frac{1}{2}$ " AVG.	
AT5	#5	STR	0			0			17	44'-9" AVG.		13	48'-2 $\frac{1}{2}$ " AVG.	

- ① INCLUDES 2'-6" LAP
- ② QUANTITY SHOWN REPRESENTS TWO SETS.

APPROVED BY BRIDGE ENGINEER *Scott Luch* DATE 4/2/10

**OKLAHOMA DEPT. OF TRANSPORTATION**  
**BRIDGE STANDARD (ENGLISH)**  
 RCB CULVERTS - END SECTION DETAILS  
 TRIPLE CELL - 5'-0" HEIGHT - 30°  
 SHEET NO. 1 OF 3

2009 SPECIFICATIONS | RCB-E3-H5-30-1 | 01E | B-753E