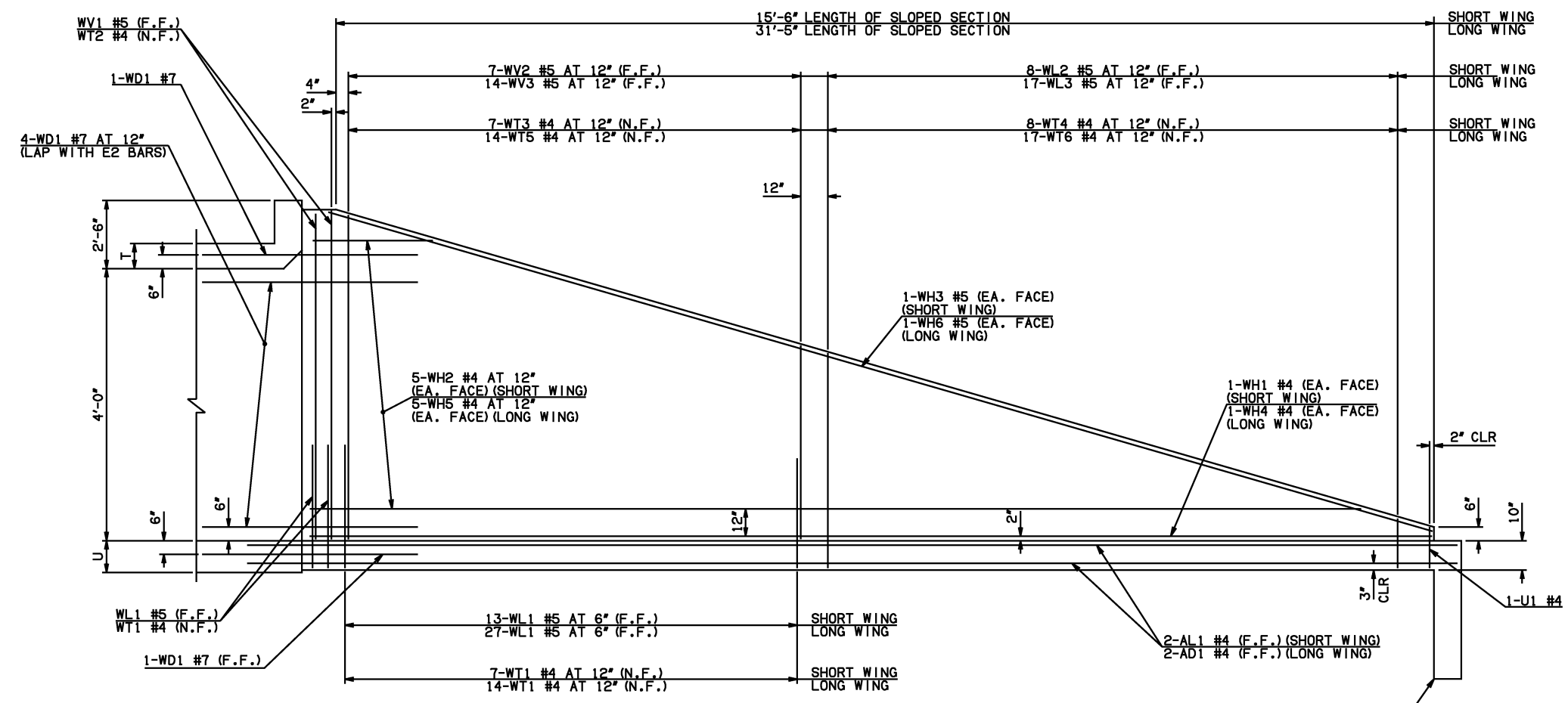
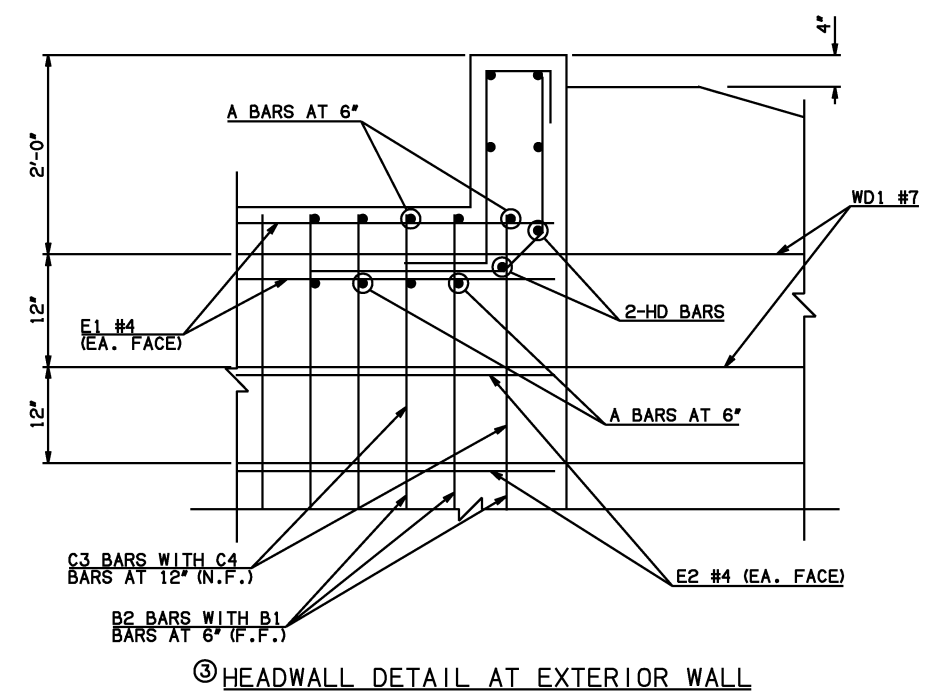


DESCRIPTION	REVISIONS	DATE

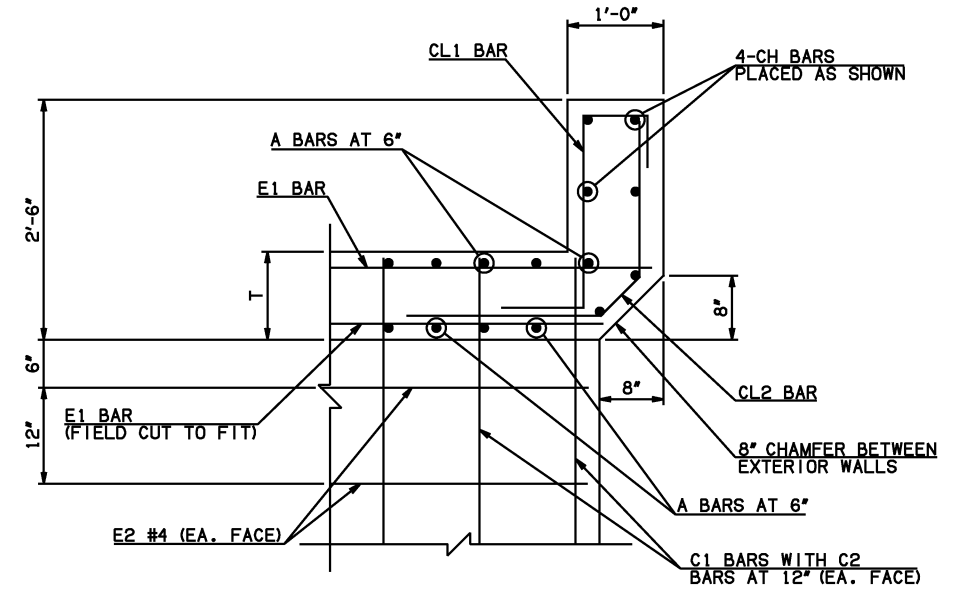


NOTE: F.F. = FAR FACE
N.F. = NEAR FACE

WING ELEVATION

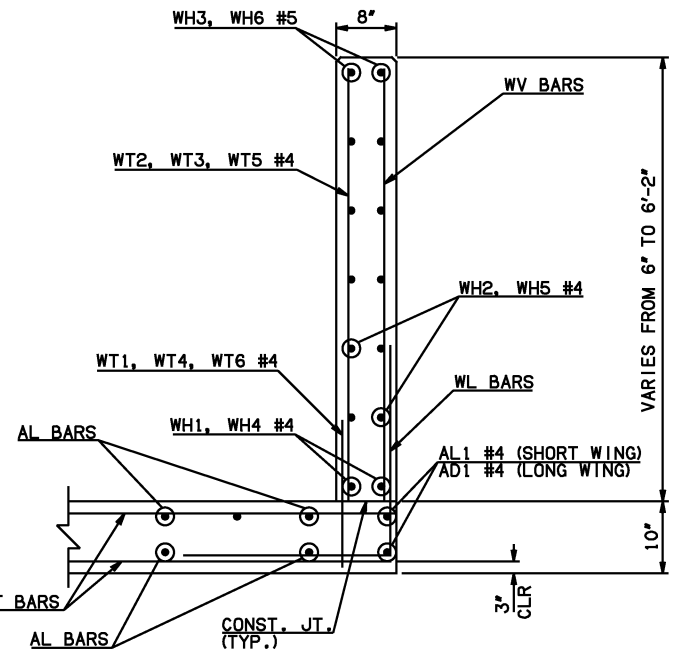


③ HEADWALL DETAIL AT EXTERIOR WALL

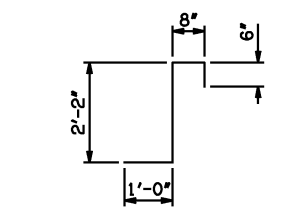


③ HEADWALL DETAIL AT INTERIOR WALL
DIMENSION SHOWN NORMAL TO HEADWALL

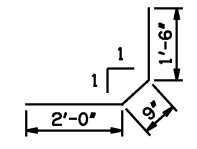
NOTES:
② QUANTITY SHOWN REPRESENTS TWO SETS.
③ FOR FURTHER INFORMATION REGARDING END SECTION BARS A, B, C, E1, AND E2, REFER TO RCB CULVERT - BARREL DETAILS.



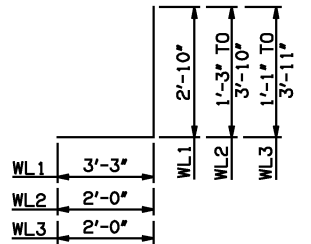
TYPICAL SECTION THRU WING



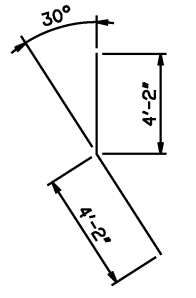
CL1 AT 4'-4"



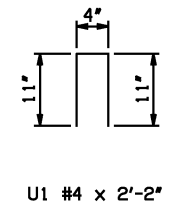
CL2 AT 4'-3"



WL1 #5 x 6'-1"
WL2 #5 x 4'-6 1/2" AVG.
WL3 #5 x 4'-6" AVG.



WD1 #7 x 8'-4"



U1 #4 x 2'-2"

WINGWALL BAR LIST (LONG AND SHORT WING INCLUDED)					
MARK	SIZE	QTY.	FORM	LENGTH	REMARKS
WD1	#7	12	BNT	8'-4"	
WH1	#4	2	STR	16'-4"	
WH2	#4	10	STR	8'-8" AVG.	3'-2" TO 14'-2"
WH3	#5	2	STR	16'-3"	
WH4	#4	2	STR	32'-3"	
WH5	#4	10	STR	16'-7 1/2" AVG.	5'-6" TO 27'-9"
WH6	#5	2	STR	31'-9"	
WL1	#5	44	BNT	6'-1"	
WL2	#5	8	BNT	4'-6 1/2" AVG.	3'-3" TO 5'-10"
WL3	#5	17	BNT	4'-6" AVG.	3'-1" TO 5'-11"
WT1	#4	25	STR	2'-10"	
WT2	#4	5	STR	6'-0"	
WT3	#4	7	STR	4'-9" AVG.	3'-8" TO 5'-10"
WT4	#4	8	STR	2'-6 1/2" AVG.	1'-3" TO 3'-10"
WT5	#4	14	STR	4'-9" AVG.	3'-7" TO 5'-11"
WT6	#4	17	STR	2'-8" AVG.	1'-1" TO 3'-11"
WV1	#5	4	STR	6'-0"	
WV2	#5	7	STR	4'-9" AVG.	3'-8" TO 5'-10"
WV3	#5	14	STR	4'-9" AVG.	3'-7" TO 5'-11"
U1	#4	2	BNT	2'-2"	

HEADWALL BAR LIST																
ONE HEADWALL SHOWN																
MARK	FORM	4' SPAN			5' SPAN			6' SPAN			8' SPAN			10' SPAN		
		SIZE	QTY.	LENGTH	SIZE	QTY.	LENGTH	SIZE	QTY.	LENGTH	SIZE	QTY.	LENGTH	SIZE	QTY.	LENGTH
CH	STR	#4	4	17'-11"	#4	4	21'-4"	#4	4	24'-10"	#4	4	31'-9"	#6	4	38'-8"
CL1	BNT	#4	18	4'-4"	#4	22	4'-4"	#4	25	4'-4"	#4	32	4'-4"	#5	39	4'-4"
CL2	BNT	#4	18	4'-3"	#4	22	4'-3"	#4	25	4'-3"	#4	32	4'-3"	#5	39	4'-3"
HD	STR	#6	2	17'-11"	#6	2	21'-4"	#6	2	24'-10"	#6	2	31'-9"	#8	2	38'-8"

APPROVED BY BRIDGE ENGINEER *Scott J. Smith* DATE 4/2/10

OKLAHOMA DEPT. OF TRANSPORTATION
BRIDGE STANDARD (ENGLISH)
 RCB CULVERTS - END SECTION DETAILS
 TRIPLE CELL - 4'-0" HEIGHT - 30°
 SHEET NO. 3 OF 3

2009 SPECIFICATIONS RCB-E3-H4-30-3 01E
 B-752E