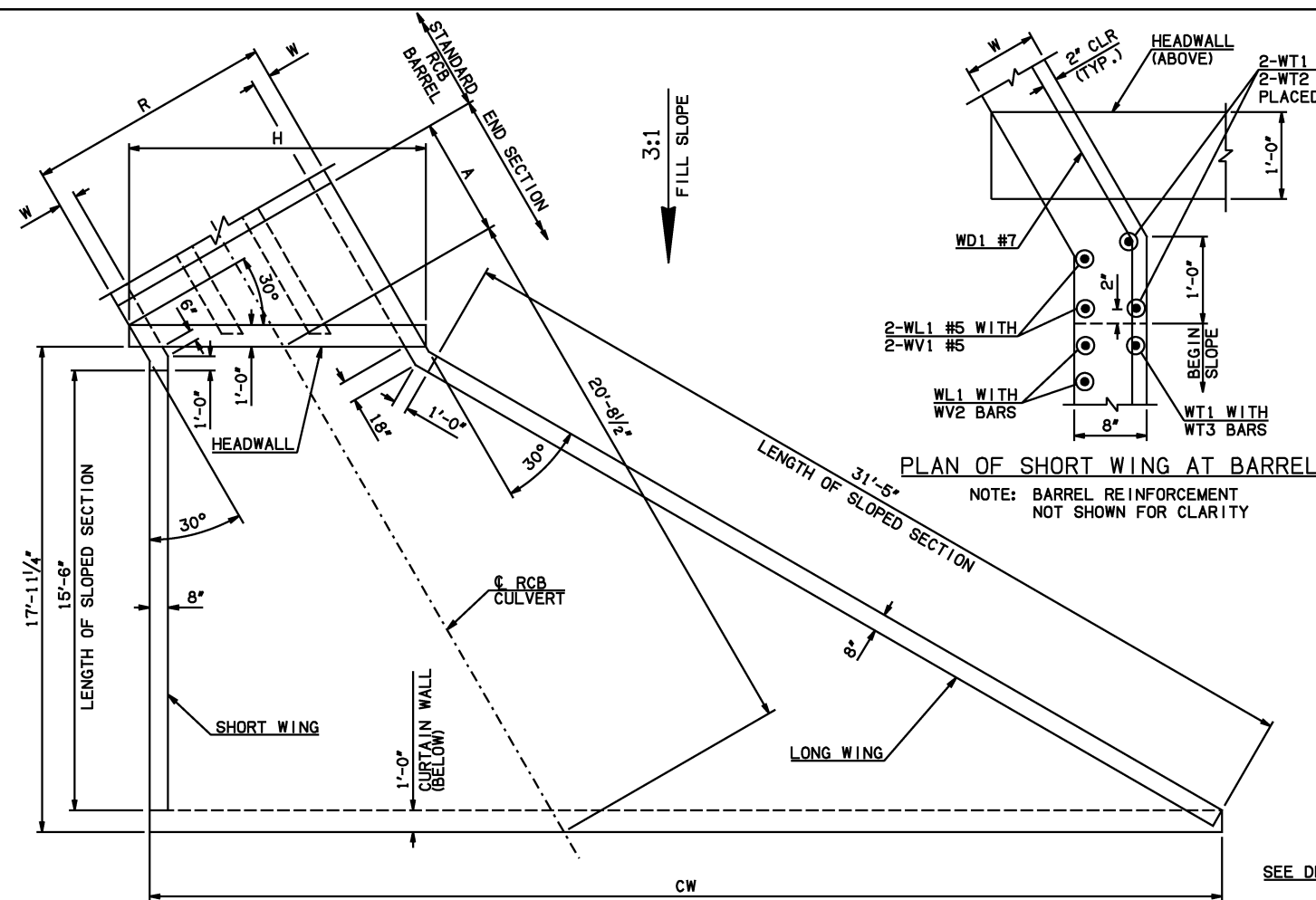


DESCRIPTION	REVISIONS	DATE



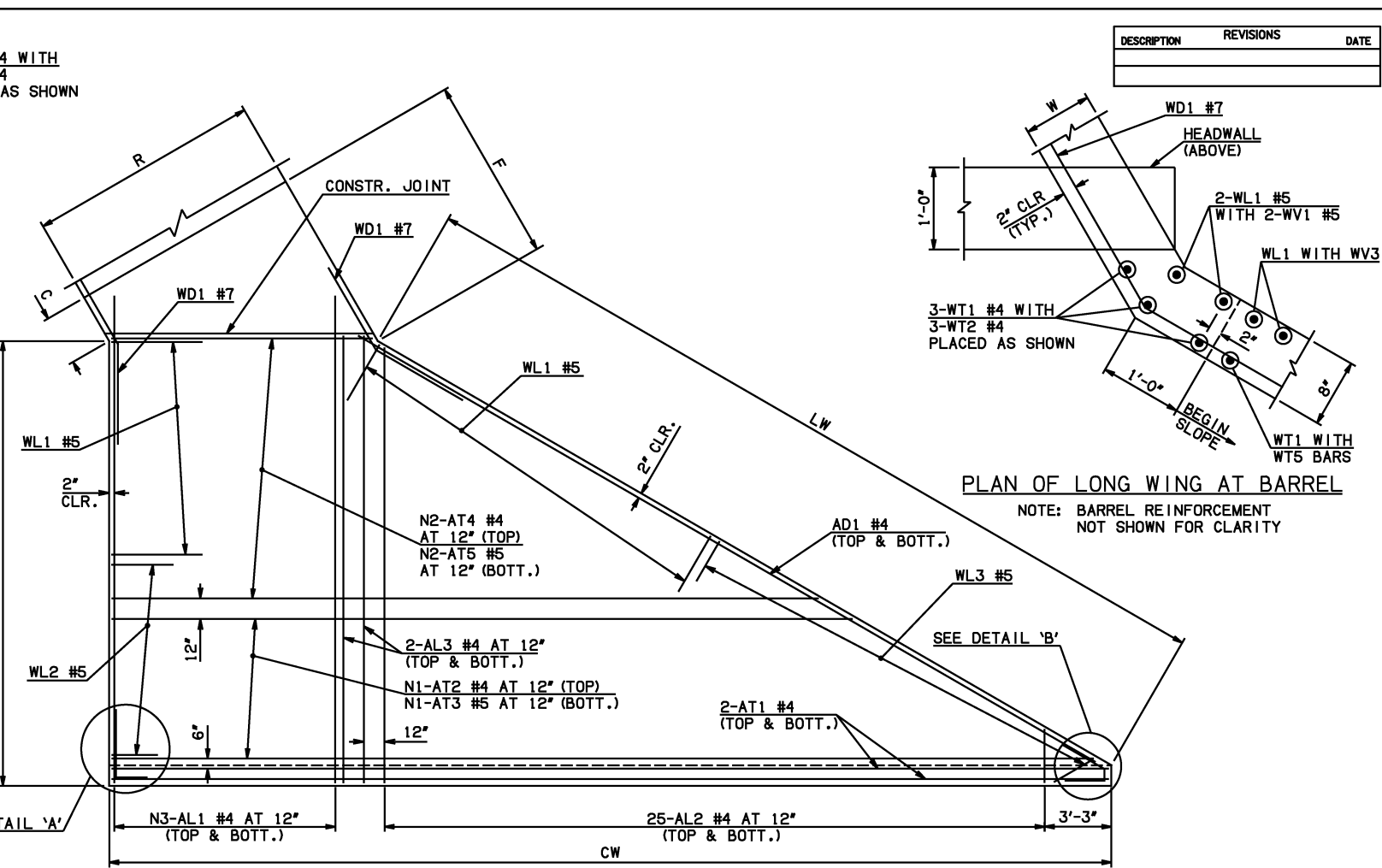
END SECTION PLAN

NOTE: SEE END SECTION DETAILS SHEET NO. 2 OF 3 FOR VARIABLE REINFORCING QUANTITIES.

SPAN	W	A	B	C	CW	D	E	F	G	H	LW	R	SW
4'	10"	7'-0"	2'-7"	3'-8"	45'-4 1/4"	3'-6 3/4"	11'-5"	12'-6 3/4"	12'-5 1/4"	18'-3 1/2"	31'-11"	15'-4"	16'-11 3/4"
5'	10"	8'-0"	2'-8 1/2"	3'-9 1/2"	48'-10"	3'-8 1/4"	13'-3 1/2"	14'-5"	14'-3 3/4"	21'-9"	31'-11"	18'-4"	16'-11 3/4"
6'	10"	9'-0"	2'-10"	3'-11 1/4"	52'-3 1/2"	3'-9 3/4"	15'-2"	16'-3 1/2"	16'-2 1/4"	25'-2 1/2"	31'-11"	21'-4"	16'-11 3/4"
8'	10"	10'-0"	2'-11 1/4"	3'-2 1/2"	59'-2 1/2"	3'-1"	17'-10 3/4"	19'-0 1/4"	18'-11"	32'-1 3/4"	31'-11"	27'-4"	16'-11 3/4"
10'	10"	12'-0"	2'-4 1/2"	3'-5 1/2"	66'-1 3/4"	3'-4 1/4"	21'-7 1/2"	22'-9"	22'-7 3/4"	39'-0 3/4"	31'-11"	33'-4"	16'-11 3/4"

PLAN OF SHORT WING AT BARREL

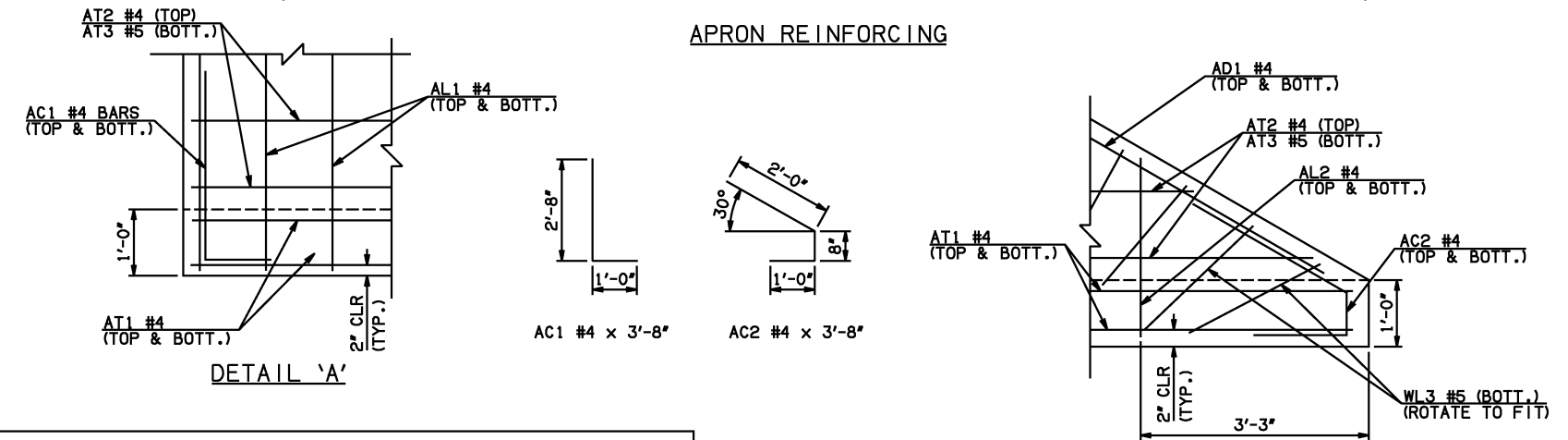
NOTE: BARREL REINFORCEMENT NOT SHOWN FOR CLARITY



PLAN OF LONG WING AT BARREL

NOTE: BARREL REINFORCEMENT NOT SHOWN FOR CLARITY

APRON REINFORCING



DETAIL 'A'

DETAIL 'B'

APRON BAR LIST

MARK	SIZE	FORM	ONE APRON SHOWN																
			4' SPAN				5' SPAN				6' SPAN				8' SPAN				10' SPAN
QTY.	LENGTH	REMARKS	QTY.	LENGTH	REMARKS	QTY.	LENGTH	REMARKS	QTY.	LENGTH	REMARKS	QTY.	LENGTH	REMARKS	QTY.	LENGTH	REMARKS		
AC1	#4	BNT	2	3'-8"		2	3'-8"		2	3'-8"		2	3'-8"		2	3'-8"			
AC2	#4	BNT	2	3'-8"		2	3'-8"		2	3'-8"		2	3'-8"		2	3'-8"			
AD1	#4	STR	2	33'-6"		2	33'-6"		2	33'-6"		2	33'-6"		2	33'-6"			
AL1	#4	STR	32	19'-9"		40	19'-9"		46	19'-9"		60	19'-9"		74	19'-9"			
AL2	#4	STR	50	9'-5" AVG.	2'-6" TO 16'-4"	50	9'-5" AVG.	2'-6" TO 16'-4"	50	9'-5" AVG.	2'-6" TO 16'-4"	50	9'-5" AVG.	2'-6" TO 16'-4"	50	9'-5" AVG.	2'-6" TO 16'-4"		
AL3	#4	STR	4	17'-9"		4	17'-9"		4	17'-9"		4	17'-9"		4	17'-9"			
AT1	#4	STR	4	45'-0"		4	48'-5"		4	51'-11"		4	58'-10"		4	68'-3"			
AT2	#4	STR	17	30'-4 1/2" AVG.	16'-6" TO 44'-3"	17	33'-10" AVG.	20'-0" TO 47'-8"	17	37'-3 1/2" AVG.	23'-5" TO 51'-2"	17	44'-3" AVG.	30'-5" TO 58'-1"	3	65'-9 1/2" AVG.	64'-1" TO 67'-6"		
AT3	#5	STR	17	30'-4 1/2" AVG.	16'-6" TO 44'-3"	17	33'-10" AVG.	20'-0" TO 47'-8"	17	37'-3 1/2" AVG.	23'-5" TO 51'-2"	17	44'-3" AVG.	30'-5" TO 58'-1"	3	65'-9 1/2" AVG.	64'-1" TO 67'-6"		
AT4	#4	STR	0			0			0			0			14	48'-7" AVG.	37'-4" TO 59'-10"		
AT5	#5	STR	0			0			0			0			14	48'-7" AVG.	37'-4" TO 59'-10"		

- ① INCLUDES 2'-6" LAP
- ② QUANTITY SHOWN REPRESENTS TWO SETS.

APPROVED BY BRIDGE ENGINEER *Scott Luedtke* DATE 4/2/10

OKLAHOMA DEPT. OF TRANSPORTATION
BRIDGE STANDARD (ENGLISH)
 RCB CULVERTS - END SECTION DETAILS
 TRIPLE CELL - 4'-0" HEIGHT - 30°
 SHEET NO. 1 OF 3

2009 SPECIFICATIONS | RCB-E3-H4-30-1 | 01E | B-750E