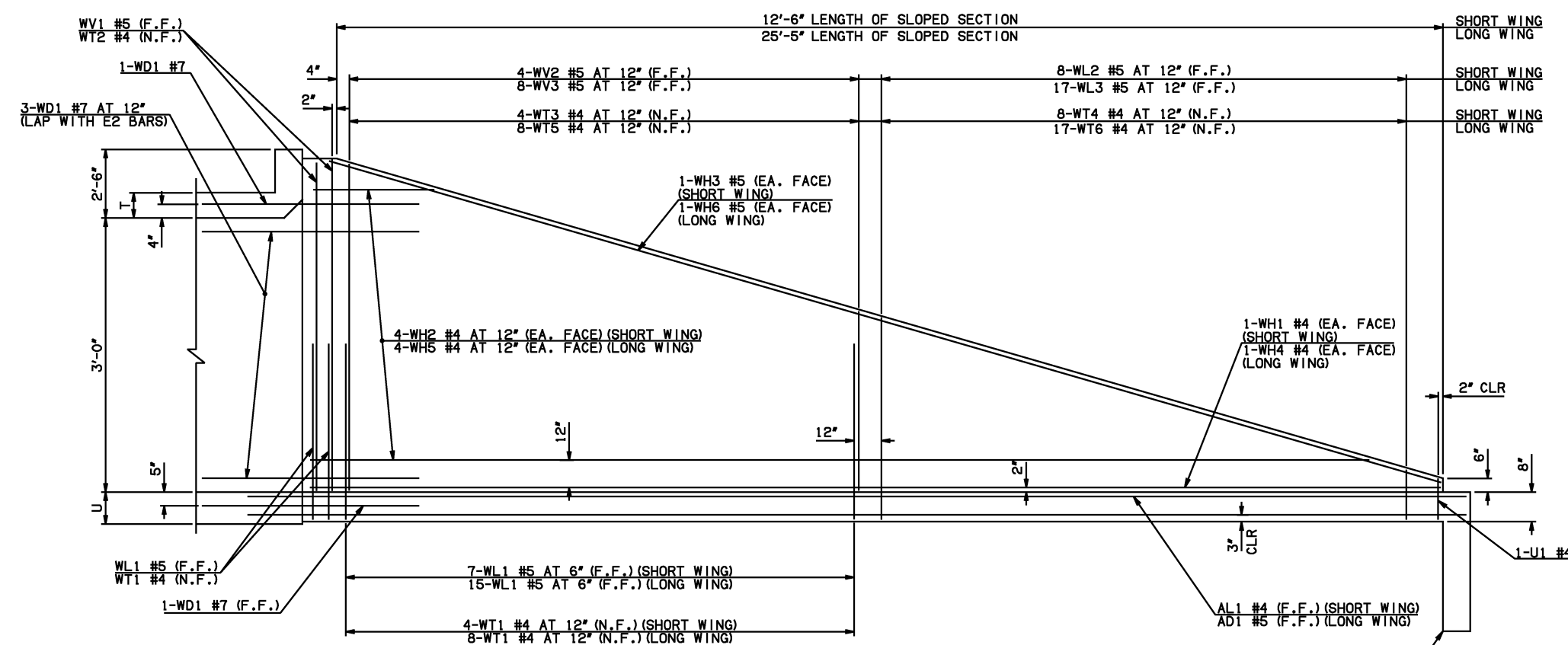
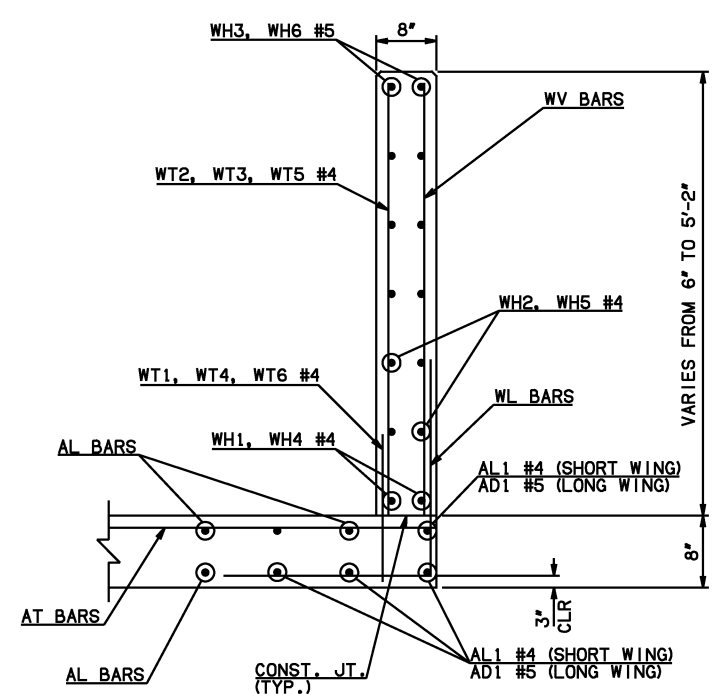


DESCRIPTION	REVISIONS	DATE



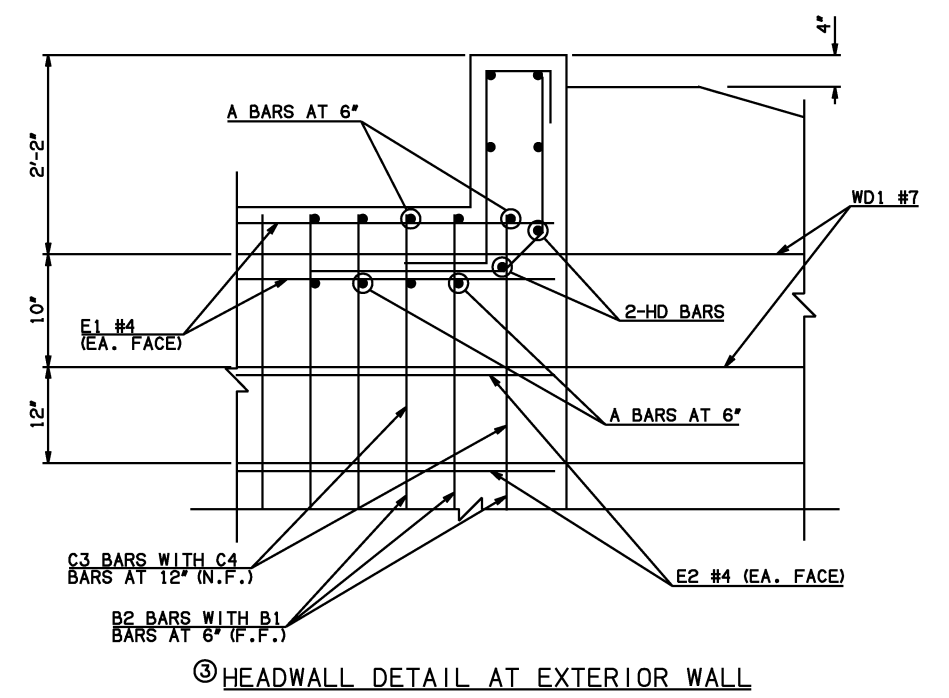
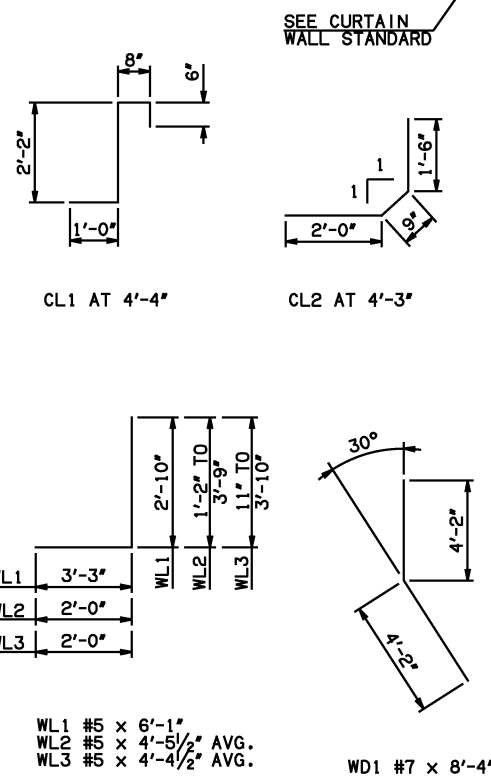
NOTE: F.F. = FAR FACE  
N.F. = NEAR FACE

WING ELEVATION

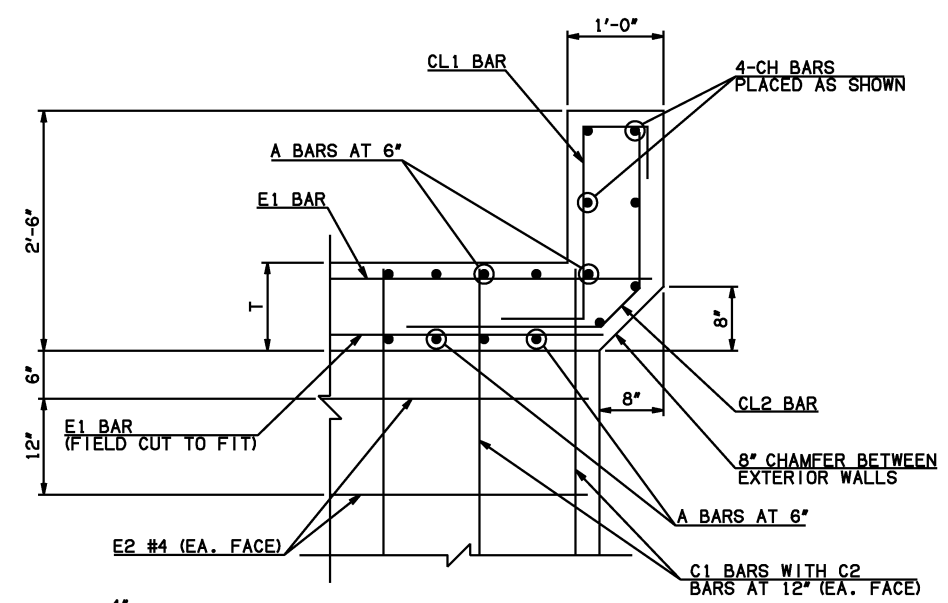


TYPICAL SECTION THRU WING

WINGWALL BAR LIST (LONG AND SHORT WING INCLUDED)					
MARK	SIZE	QTY.	FORM	LENGTH	REMARKS
WD1	#7	10	BNT	8'-4"	
WH1	#4	2	STR	13'-4"	
WH2	#4	8	STR	7'-2" AVG.	3'-2" TO 11'-2"
WH3	#5	2	STR	13'-1"	
WH4	#4	2	STR	26'-3"	
WH5	#4	8	STR	13'-7 1/2" AVG.	5'-5" TO 21'-10"
WH6	#5	2	STR	25'-8"	
WL1	#5	26	BNT	6'-1"	
WL2	#5	8	BNT	4'-5 1/2" AVG.	3'-2" TO 5'-9"
WL3	#5	17	BNT	4'-4 1/2" AVG.	2'-11" TO 5'-10"
WT1	#4	17	STR	2'-10"	
WT2	#4	5	STR	5'-0"	
WT3	#4	4	STR	4'-3" AVG.	3'-8" TO 4'-10"
WT4	#4	8	STR	2'-5 1/2" AVG.	1'-2" TO 3'-9"
WT5	#4	8	STR	4'-3" AVG.	3'-7" TO 4'-11"
WT6	#4	17	STR	2'-4 1/2" AVG.	11" TO 3'-10"
WV1	#5	4	STR	5'-0"	
WV2	#5	4	STR	4'-3" AVG.	3'-8" TO 4'-10"
WV3	#5	8	STR	4'-3" AVG.	3'-7" TO 4'-11"
U1	#4	2	BNT	1'-10"	



HEADWALL DETAIL AT EXTERIOR WALL



HEADWALL DETAIL AT INTERIOR WALL  
DIMENSION SHOWN NORMAL TO HEADWALL

NOTES:  
 ② QUANTITY SHOWN REPRESENTS TWO SETS.  
 ③ FOR FURTHER INFORMATION REGARDING END SECTION BARS A, B, C, E1, AND E2, REFER TO RCB CULVERT - BARREL DETAILS.

HEADWALL BAR LIST																
ONE HEADWALL SHOWN																
MARK	FORM	4' SPAN			5' SPAN			6' SPAN			8' SPAN			10' SPAN		
		SIZE	QTY.	LENGTH	SIZE	QTY.	LENGTH	SIZE	QTY.	LENGTH	SIZE	QTY.	LENGTH	SIZE	QTY.	LENGTH
CH	STR	#4	4	17'-11"	#4	4	21'-4"	#4	4	24'-10"	#4	4	31'-9"	#6	4	38'-8"
CL1	BNT	#4	18	4'-4"	#4	22	4'-4"	#4	25	4'-4"	#4	32	4'-4"	#5	39	4'-4"
CL2	BNT	#4	18	4'-3"	#4	22	4'-3"	#4	25	4'-3"	#4	32	4'-3"	#5	39	4'-3"
HD	STR	#6	2	17'-11"	#6	2	21'-4"	#6	2	24'-10"	#6	2	31'-9"	#8	2	38'-8"

APPROVED BY BRIDGE ENGINEER *Scott Lueck* DATE 4/2/10

**OKLAHOMA DEPT. OF TRANSPORTATION**  
**BRIDGE STANDARD (ENGLISH)**  
 RCB CULVERTS - END SECTION DETAILS  
 TRIPLE CELL - 3'-0" HEIGHT - 30°  
 SHEET NO. 3 OF 3

2009 SPECIFICATIONS RCB-E3-H3-30-3 01E B-749E