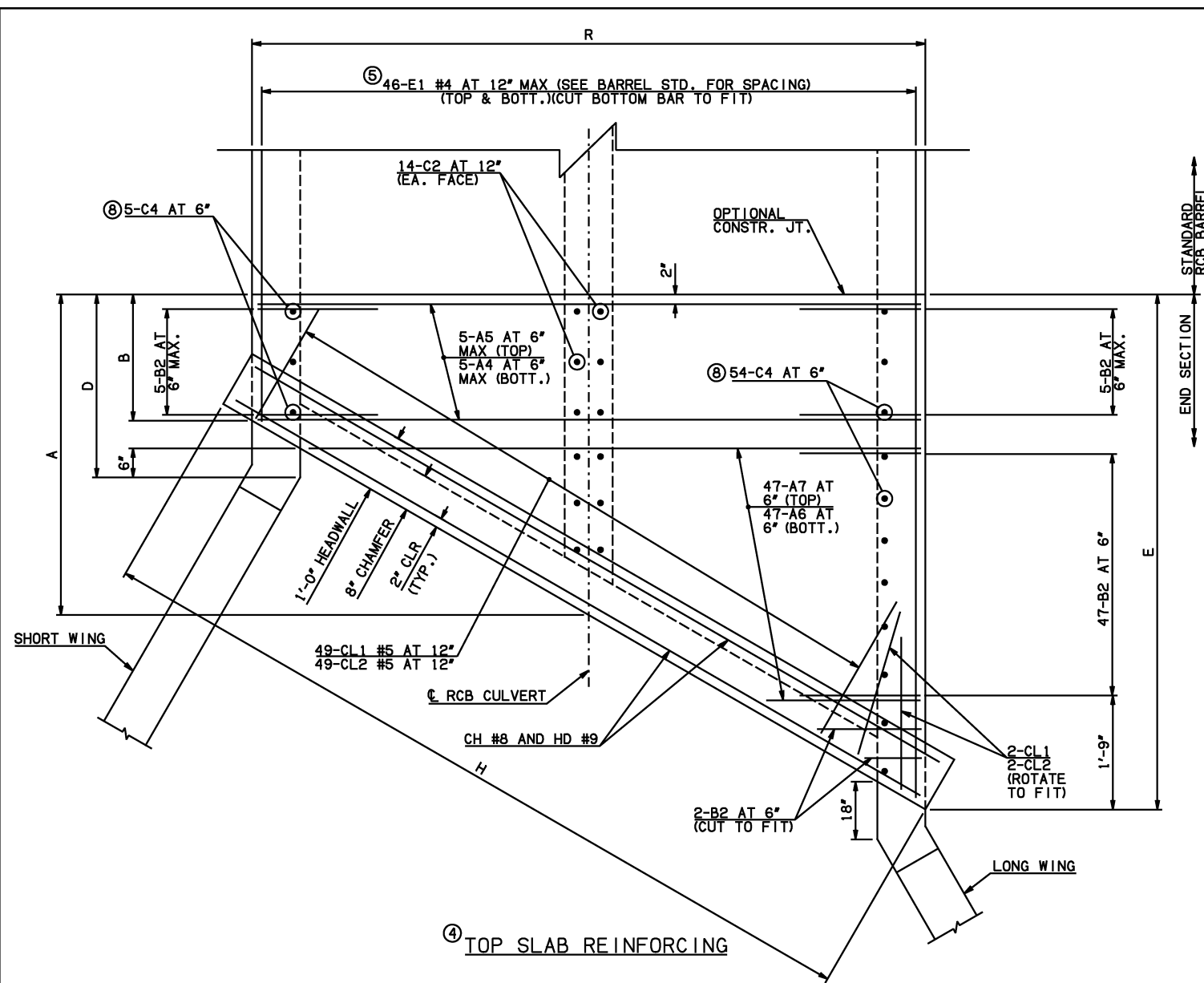
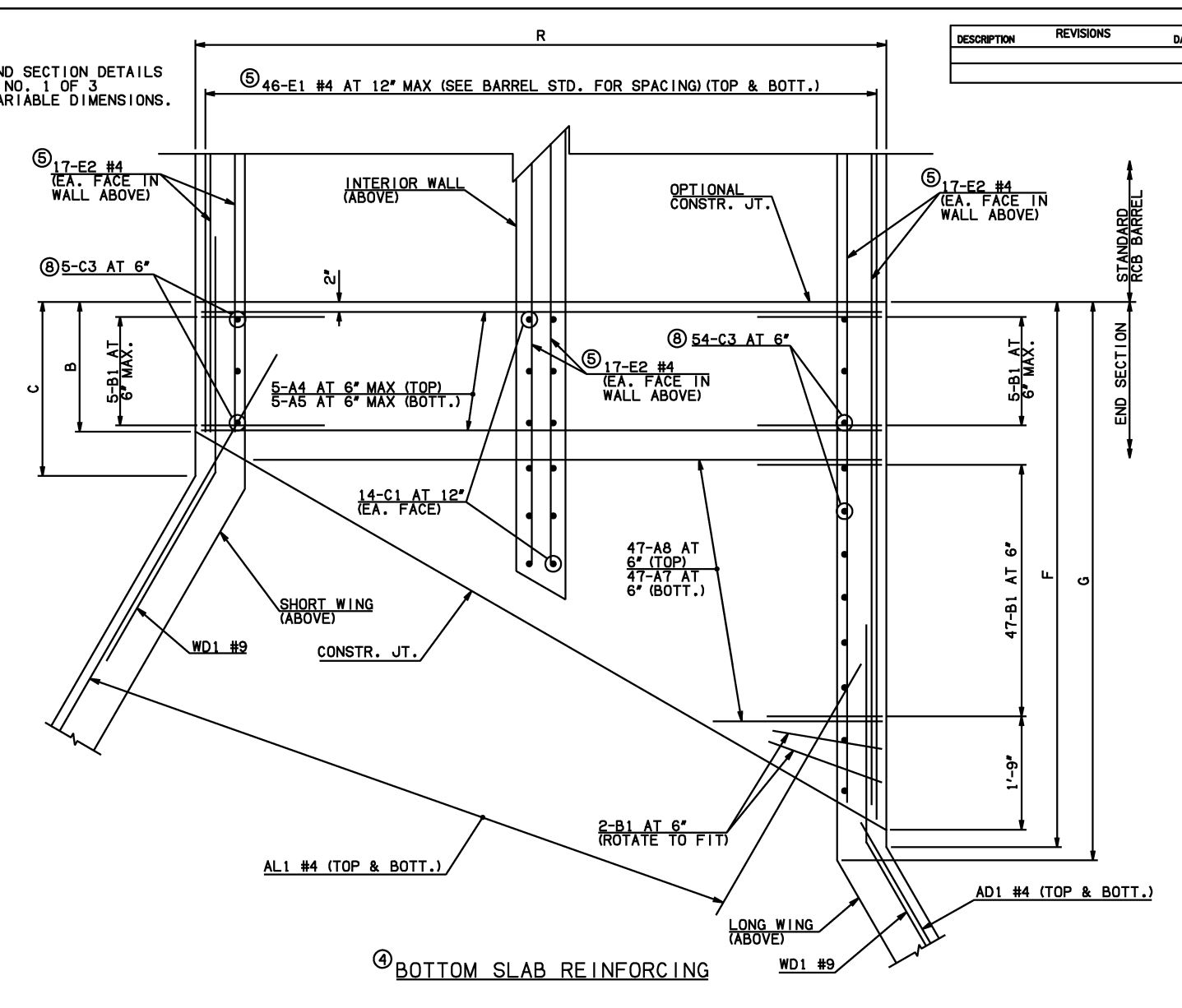


DESCRIPTION	REVISIONS	DATE



NOTE: SEE END SECTION DETAILS SHEET NO. 1 OF 3 FOR VARIABLE DIMENSIONS.



END CONNECTION BAR LIST				
ONE END CONNECTION SHOWN				
MARK	FORM	SIZE	QTY.	LENGTH
20' SPAN				
A4	STR	#8	10	43'-2"
A5	STR	#10	10	43'-2"
A6	STR	#9	47	21'-3" AVG.
A7	STR	#10	94	22'-5" AVG.
A8	STR	#9	47	22'-5" AVG.
B1	BNT	#8	59	8'-4"
B2	BNT	#8	59	22'-1"
C1	STR	#4	28	2'-8"
C2	STR	#4	28	18'-4"
C3	STR	#5	59	3'-0"
C4	STR	#5	59	18'-4"
E1	STR	#4	184	14'-9 1/2" AVG.
E2	STR	#4	102	14'-3 1/2" AVG.

QUANTITIES		
ITEM	UNIT	20' SPAN
CLASS AA CONCRETE	CY	551.50
REINFORCING STEEL	LB	68670.00

NOTE: QUANTITIES ABOVE ARE FOR ONE END SECTION, WHICH IS COMPRISED OF ONE END CONNECTION, ONE HEADWALL, ONE APRON, AND TWO WINGWALLS.

- NOTES: ③ QUANTITY SHOWN REPRESENTS TWO SETS.
 ④ FOR FURTHER INFORMATION REGARDING END SECTION A, B, C, AND E BARS REFER TO RCB CULVERT - BARREL DETAILS.
 ⑤ LENGTHS OF E1 & E2 BARS SHOWN ARE ADDITIONAL LENGTHS REQUIRED FOR THE END SECTION. LAP SPLICES, AS REQUIRED, SHALL BE IN ACCORDANCE WITH RCB BARREL STANDARD NOTES.
 ⑥ 4-SETS OF 46-E1 BARS REQUIRED.
 ⑦ 3-SETS OF 34-E2 BARS REQUIRED WITH LENGTHS AS SHOWN CORRESPONDING TO SHORT EXTERIOR WALL, INTERIOR WALL, AND LONG EXTERIOR WALL.
 ⑧ C3 AND C4 BAR SIZE AND SPACING MAY DIFFER FROM BARREL SECTION.

APPROVED BY BRIDGE ENGINEER *Scott J. Smith* DATE 4/2/10

OKLAHOMA DEPT. OF TRANSPORTATION
BRIDGE STANDARD (ENGLISH)
 RCB CULVERTS - END SECTION DETAILS
 DOUBLE CELL - 17'-0" HEIGHT - 30"
 SHEET NO. 2 OF 3

2009 SPECIFICATIONS | RCB-E2-H17-30-2 | 01E | B-739E