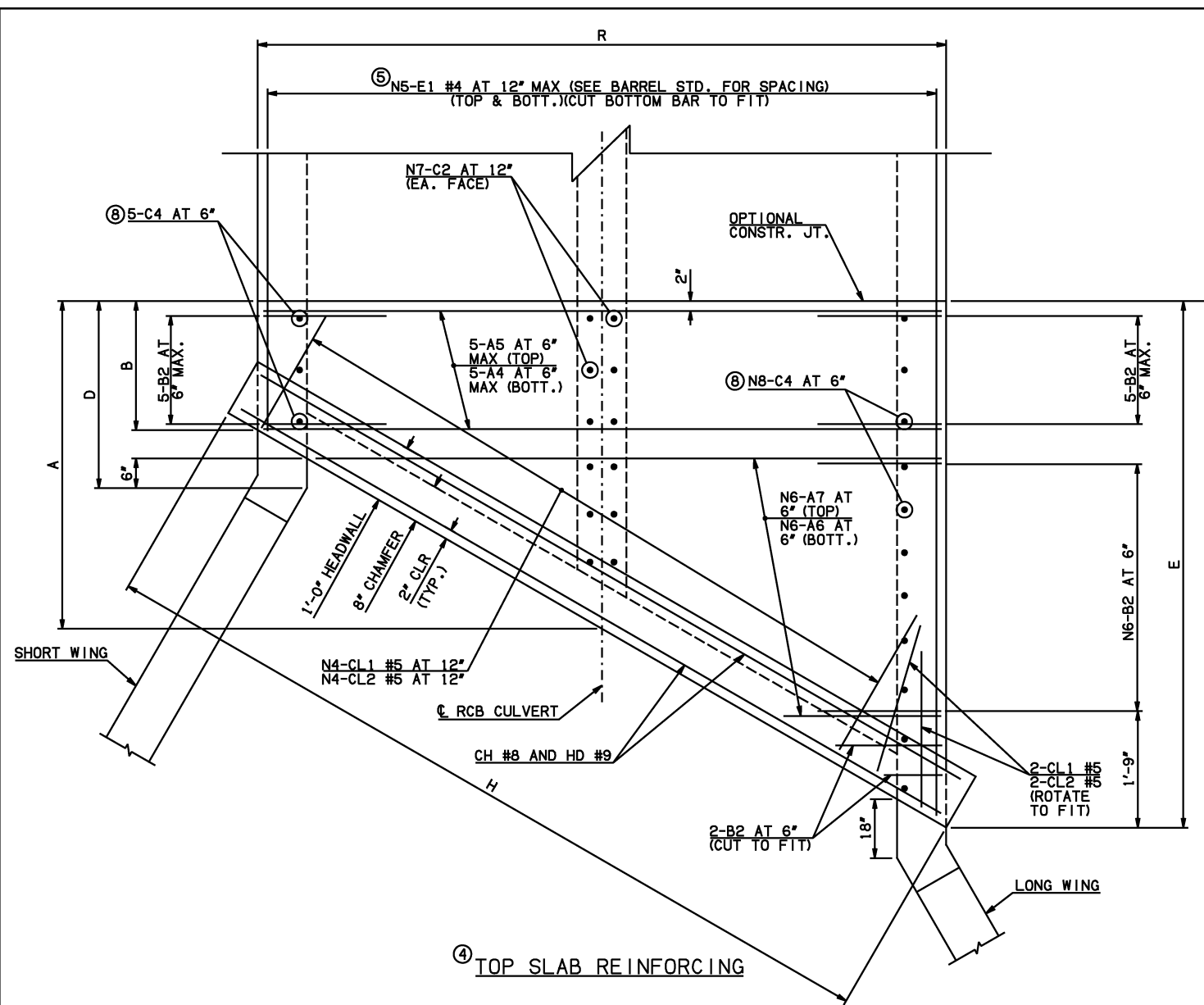
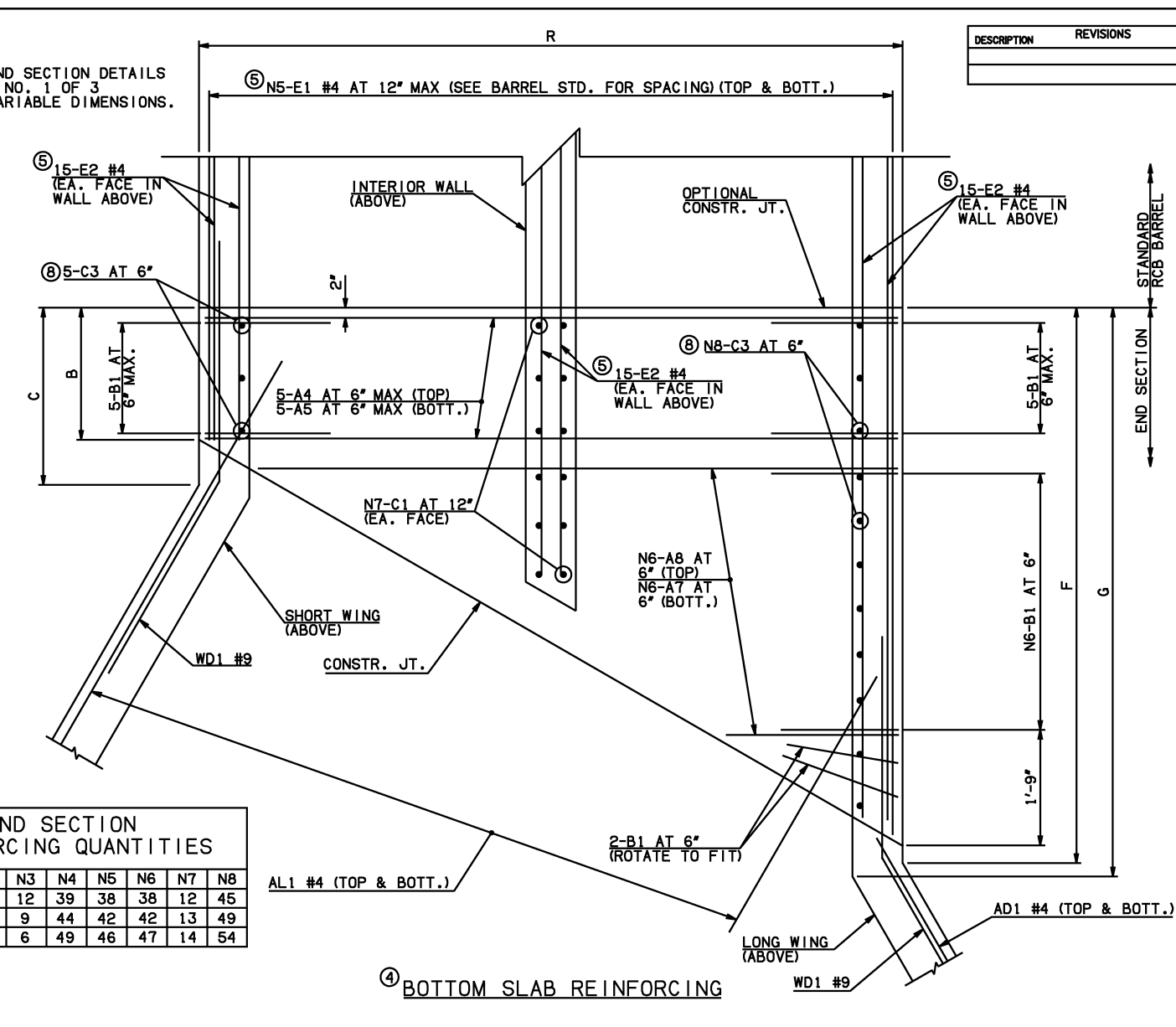


DESCRIPTION	REVISIONS	DATE



NOTE: SEE END SECTION DETAILS SHEET NO. 1 OF 3 FOR VARIABLE DIMENSIONS.



END SECTION REINFORCING QUANTITIES

SPAN	N1	N2	N3	N4	N5	N6	N7	N8
16'	5	33	12	39	38	38	12	45
18'	8	33	9	44	42	42	13	49
20'	10	34	6	49	46	47	14	54

END CONNECTION BAR LIST

MARK	FORM	16' SPAN				18' SPAN				20' SPAN			
		SIZE	QTY.	LENGTH	REMARKS	SIZE	QTY.	LENGTH	REMARKS	SIZE	QTY.	LENGTH	REMARKS
A4	STR	#7	10	34'-10"		#8	10	39'-0"		#8	10	43'-2"	
A5	STR	#9	10	34'-10"		#9	10	39'-0"		#10	10	43'-2"	
A6	STR	#8	38	17'-4 1/2" AVG.	1'-4" TO 33'-5"	#9	42	19'-1" AVG.	1'-4" TO 36'-10"	#9	47	21'-3" AVG.	1'-4" TO 41'-2"
A7	STR	#9	76	18'-6" AVG.	2'-6" TO 34'-6"	#9	84	20'-3" AVG.	2'-6" TO 38'-0"	#10	94	22'-5" AVG.	2'-6" TO 42'-4"
A8	STR	#8	38	18'-6" AVG.	2'-6" TO 34'-6"	#9	42	20'-3" AVG.	2'-6" TO 38'-0"	#9	47	22'-5" AVG.	2'-6" TO 42'-4"
B1	BNT	#7	50	6'-8"		#7	54	6'-11"		#7	59	7'-3"	
B2	BNT	#7	50	19'-2"		#7	54	19'-5"		#7	59	19'-9"	
C1	STR	#4	24	2'-6"		#4	26	2'-7"		#4	28	2'-8"	
C2	STR	#4	24	16'-2"		#4	26	16'-3"		#4	28	16'-4"	
C3	STR	#5	50	2'-10"		#5	54	2'-11"		#5	59	3'-0"	
C4	STR	#5	50	16'-2"		#5	54	16'-3"		#5	59	16'-4"	
E1	STR	#4	152	12'-9 1/2" AVG.	2'-9" TO 22'-10"	#4	168	13'-9" AVG.	2'-6" TO 25'-0"	#4	184	14'-9 1/2" AVG.	2'-4" TO 27'-3"
E2	STR	#4	90	12'-4" AVG.	2'-9", 11'-10", 22'-5"	#4	90	13'-3 1/2" AVG.	2'-6", 12'-10", 24'-7"	#4	90	14'-3 1/2" AVG.	2'-4", 13'-10", 26'-8"

QUANTITIES

ITEM	UNIT	16' SPAN	18' SPAN	20' SPAN
CLASS AA CONCRETE	CY	344.90	372.60	402.60
REINFORCING STEEL	LB	47870.00	52920.00	59940.00

NOTE: QUANTITIES ABOVE ARE FOR ONE END SECTION, WHICH IS COMPRISED OF ONE END CONNECTION, ONE HEADWALL, ONE APRON, AND TWO WINGWALLS.

- NOTES: ③ QUANTITY SHOWN REPRESENTS TWO SETS.
 ④ FOR FURTHER INFORMATION REGARDING END SECTION A, B, C, AND E BARS REFER TO RCB CULVERT - BARREL DETAILS.
 ⑤ LENGTHS OF E1 & E2 BARS SHOWN ARE ADDITIONAL LENGTHS REQUIRED FOR THE END SECTION. LAP SPLICES, AS REQUIRED, SHALL BE IN ACCORDANCE WITH RCB BARREL STANDARD NOTES.
 ⑥ 4-SETS OF N5-E1 BARS REQUIRED.
 ⑦ 3-SETS OF 30-E2 BARS REQUIRED WITH LENGTHS AS SHOWN CORRESPONDING TO SHORT EXTERIOR WALL, INTERIOR WALL, AND LONG EXTERIOR WALL.
 ⑧ C3 AND C4 BAR SIZE AND SPACING MAY DIFFER FROM BARREL SECTION.

APPROVED BY BRIDGE ENGINEER *Scott J. Smith* DATE 4/2/10

OKLAHOMA DEPT. OF TRANSPORTATION
BRIDGE STANDARD (ENGLISH)
 RCB CULVERTS - END SECTION DETAILS
 DOUBLE CELL - 15'-0" HEIGHT - 30"
 SHEET NO. 2 OF 3

2009 SPECIFICATIONS | RCB-E2-H15-30-2 | 01E | B-736E