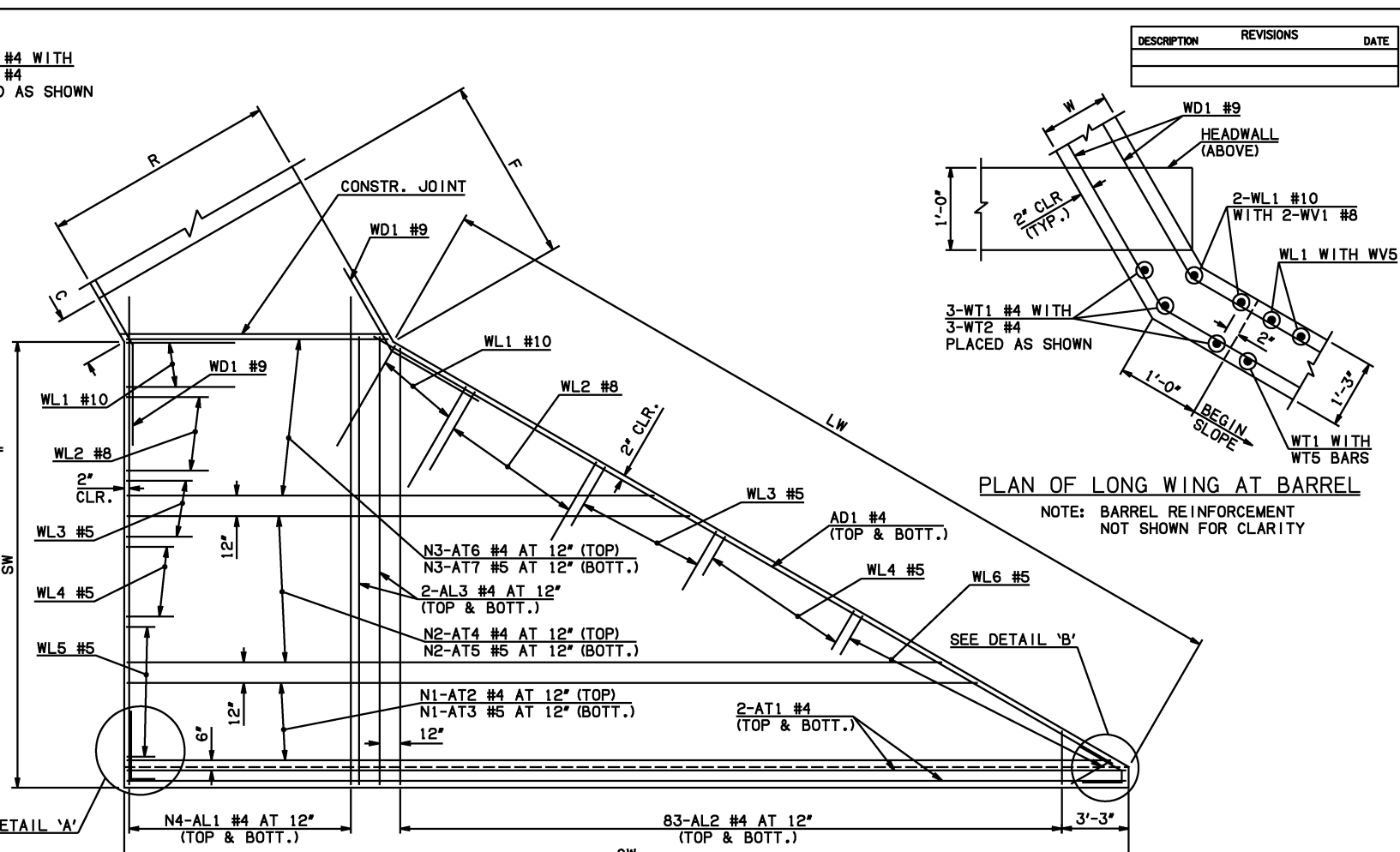
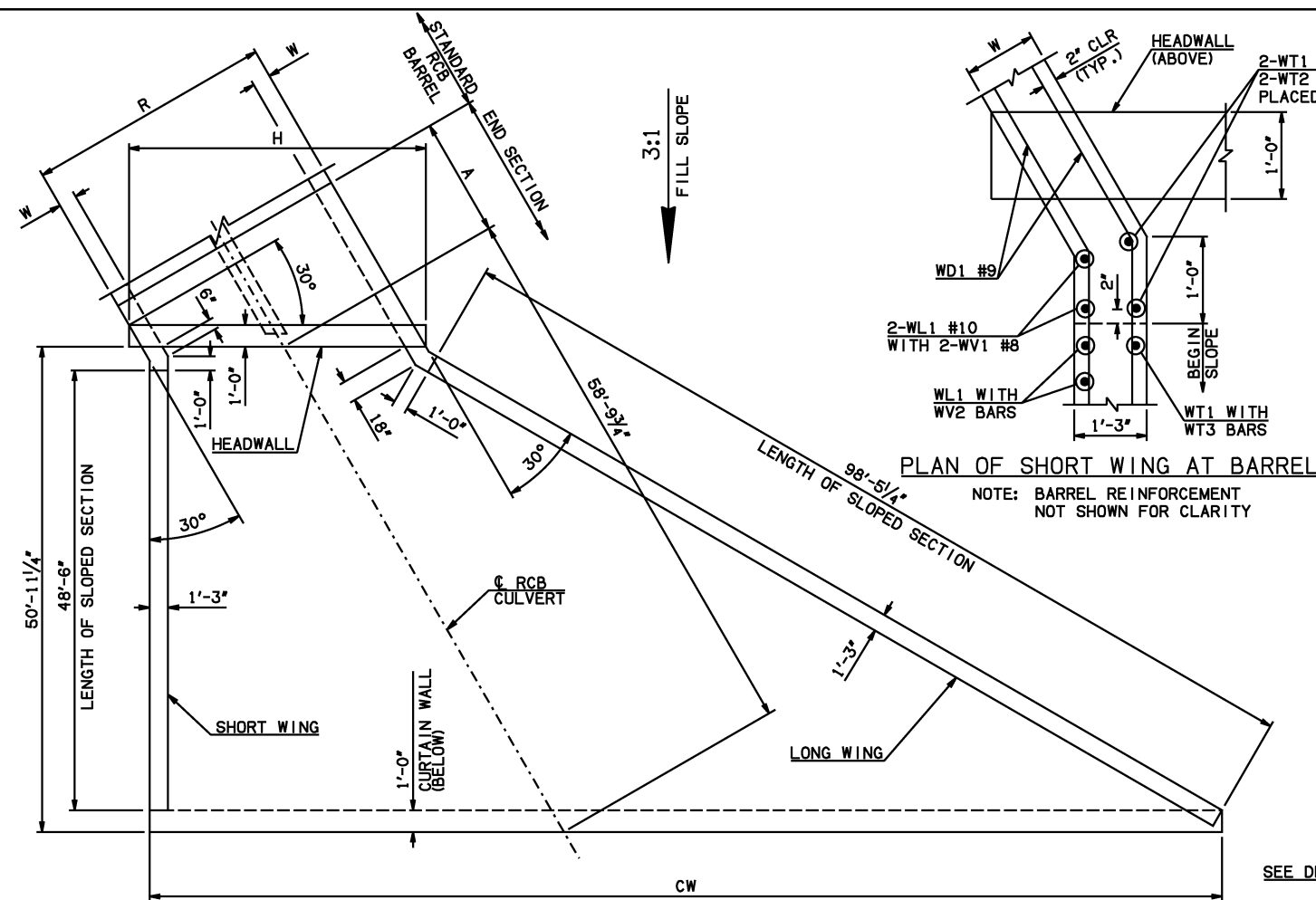
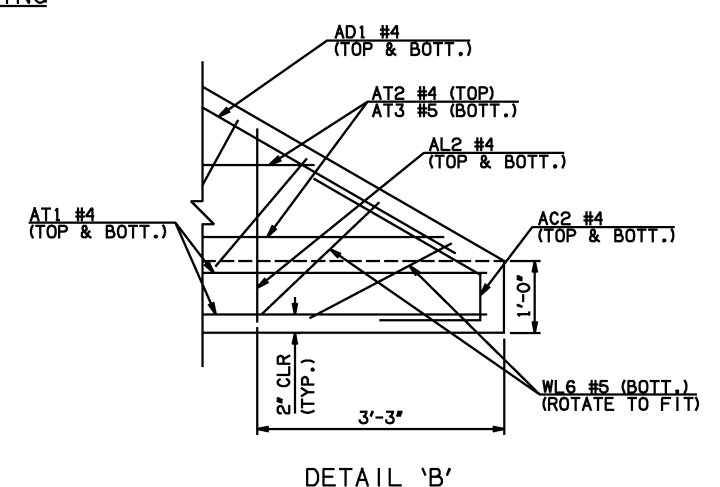
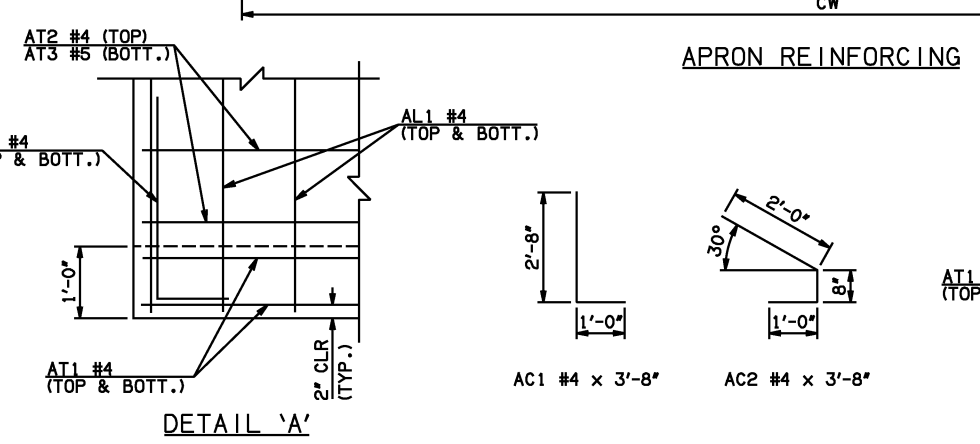


DESCRIPTION	REVISIONS	DATE



SPAN	W	A	B	C	CW	D	E	F	G	H	LW	R	SW
16'	13"	13'-0"	2'-10 ¹ / ₄ "	3'-4 ¹ / ₄ "	126'-7"	3'-11 ³ / ₄ "	23'-1 ³ / ₄ "	23'-4 ³ / ₄ "	24'-0 ¹ / ₄ "	41'-2 ¹ / ₄ "	99'-5 ¹ / ₄ "	35'-2"	50'-6"
18'	14"	14'-0"	2'-7 ³ / ₄ "	3'-4"	131'-2 ¹ / ₂ "	3'-9 ³ / ₄ "	25'-4 ¹ / ₄ "	25'-8 ¹ / ₂ "	26'-2 ¹ / ₄ "	46'-0"	99'-3 ¹ / ₄ "	39'-4"	50'-4"
20'	15"	15'-0"	2'-5 ¹ / ₄ "	3'-4"	135'-10"	3'-8"	27'-6 ³ / ₄ "	28'-0"	28'-4"	50'-9 ³ / ₄ "	99'-1 ¹ / ₄ "	43'-6"	50'-2"

MARK	SIZE	FORM	ONE APRON AND ONE HEADWALL SHOWN											
			16' SPAN				18' SPAN				20' SPAN			
QTY.	LENGTH	REMARKS	QTY.	LENGTH	REMARKS	QTY.	LENGTH	REMARKS	QTY.	LENGTH	REMARKS	QTY.	LENGTH	REMARKS
AC1 #4	BNT	2	3'-8"			2	3'-8"		2	3'-8"		2	3'-8"	
AC2 #4	BNT	2	3'-8"			2	3'-8"		2	3'-8"		2	3'-8"	
AD1 #4	STR	2	102'-0"			2	102'-0"		2	102'-0"		2	102'-0"	
AL1 #4	STR	78	52'-9"			88	52'-9"		98	52'-9"		98	52'-9"	
AL2 #4	STR	166	26'-2" AVG.	2'-6" TO 49'-10"		166	26'-2" AVG.	2'-6" TO 49'-10"	166	26'-2" AVG.	2'-6" TO 49'-10"	166	26'-2" AVG.	2'-6" TO 49'-10"
AL3 #4	STR	4	50'-9"			4	50'-9"		4	50'-9"		4	50'-9"	
AT1 #4	STR	4	131'-3"			4	135'-10"		4	140'-5"		4	140'-5"	
AT2 #4	STR	5	127'-0 ¹ / ₂ " AVG.	123'-7" TO 130'-6"		8	129'-0 ¹ / ₂ " AVG.	123'-0" TO 135'-1"	10	131'-11" AVG.	124'-1" TO 139'-9"	10	131'-11" AVG.	124'-1" TO 139'-9"
AT3 #5	STR	5	127'-0 ¹ / ₂ " AVG.	123'-7" TO 130'-6"		8	129'-0 ¹ / ₂ " AVG.	123'-0" TO 135'-1"	10	131'-11" AVG.	124'-1" TO 139'-9"	10	131'-11" AVG.	124'-1" TO 139'-9"
AT4 #4	STR	33	91'-7 ¹ / ₂ " AVG.	63'-11" TO 119'-4"		33	91'-0 ¹ / ₂ " AVG.	63'-4" TO 118'-9"	34	91'-4" AVG.	62'-9" TO 119'-11"	34	91'-4" AVG.	62'-9" TO 119'-11"
AT5 #5	STR	33	91'-7 ¹ / ₂ " AVG.	63'-11" TO 119'-4"		33	91'-0 ¹ / ₂ " AVG.	63'-4" TO 118'-9"	34	91'-4" AVG.	62'-9" TO 119'-11"	34	91'-4" AVG.	62'-9" TO 119'-11"
AT6 #4	STR	12	50'-1 ¹ / ₂ " AVG.	40'-7" TO 59'-8"		9	52'-2" AVG.	45'-3" TO 59'-1"	6	54'-2" AVG.	49'-10" TO 58'-6"	6	54'-2" AVG.	49'-10" TO 58'-6"
AT7 #5	STR	12	50'-1 ¹ / ₂ " AVG.	40'-7" TO 59'-8"		9	52'-2" AVG.	45'-3" TO 59'-1"	6	54'-2" AVG.	49'-10" TO 58'-6"	6	54'-2" AVG.	49'-10" TO 58'-6"
CH #8	STR	4	40'-10"			4	45'-7"		4	50'-5"		4	50'-5"	
CL1 #5	BNT	41	4'-4"			46	4'-4"		51	4'-4"		51	4'-4"	
CL2 #5	BNT	41	4'-3"			46	4'-3"		51	4'-3"		51	4'-3"	
HD #9	STR	2	40'-10"			2	45'-7"		2	50'-5"		2	50'-5"	



- ① INCLUDES 2'-6" LAP.
- ② INCLUDES TWO 2'-6" LAPS.
- ③ QUANTITY SHOWN REPRESENTS TWO SETS.

APPROVED BY BRIDGE ENGINEER *Scott J. Smith* DATE 4/2/10

OKLAHOMA DEPT. OF TRANSPORTATION
BRIDGE STANDARD (ENGLISH)
 RCB CULVERTS - END SECTION DETAILS
 DOUBLE CELL - 15'-0" HEIGHT - 30°
 SHEET NO. 1 OF 3

2009 SPECIFICATIONS | RCB-E2-H15-30-1 | 01E | B-735E