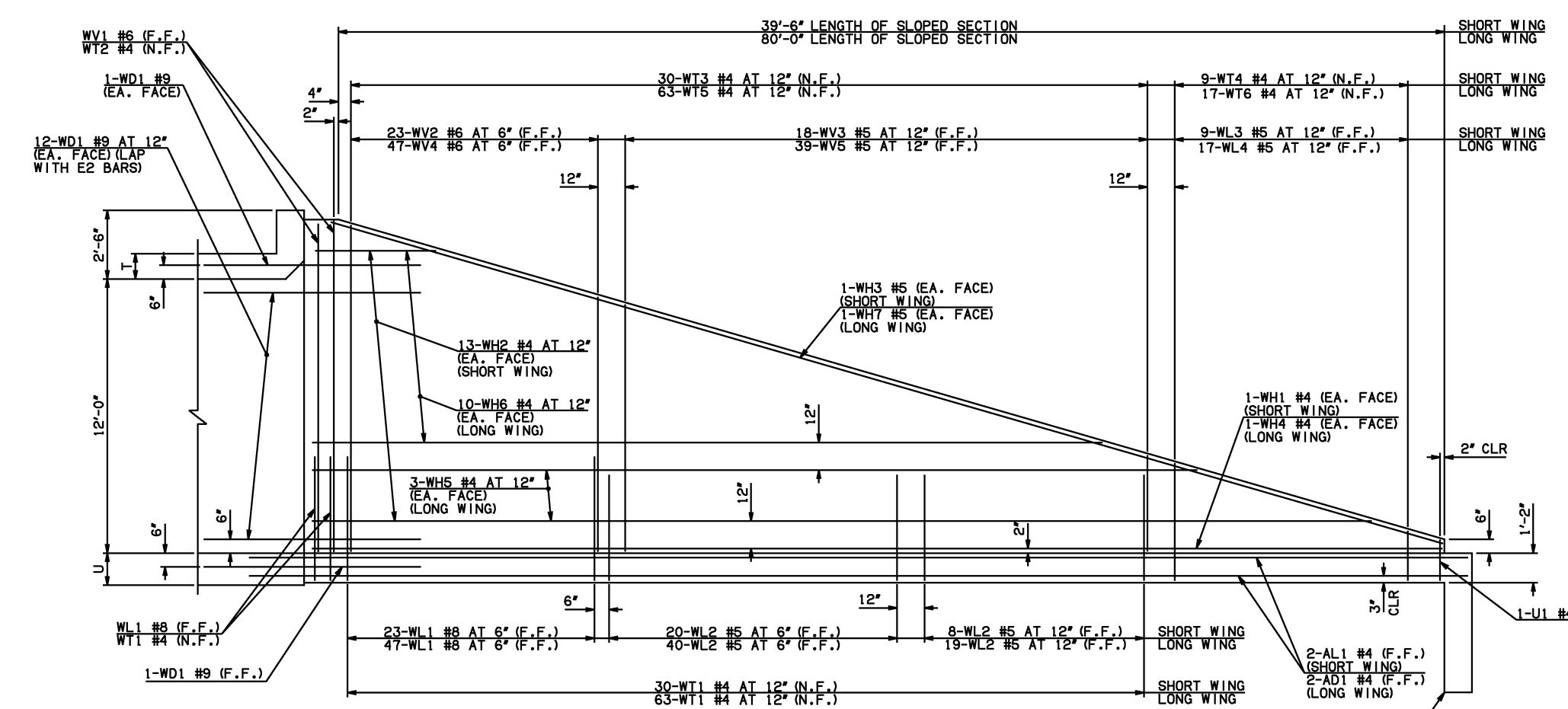
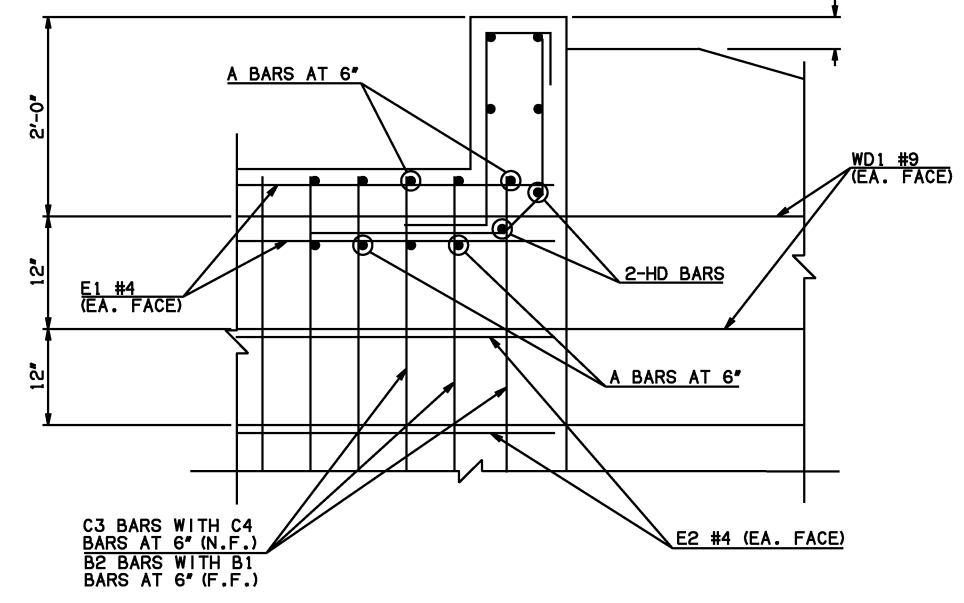


DESCRIPTION	REVISIONS	DATE

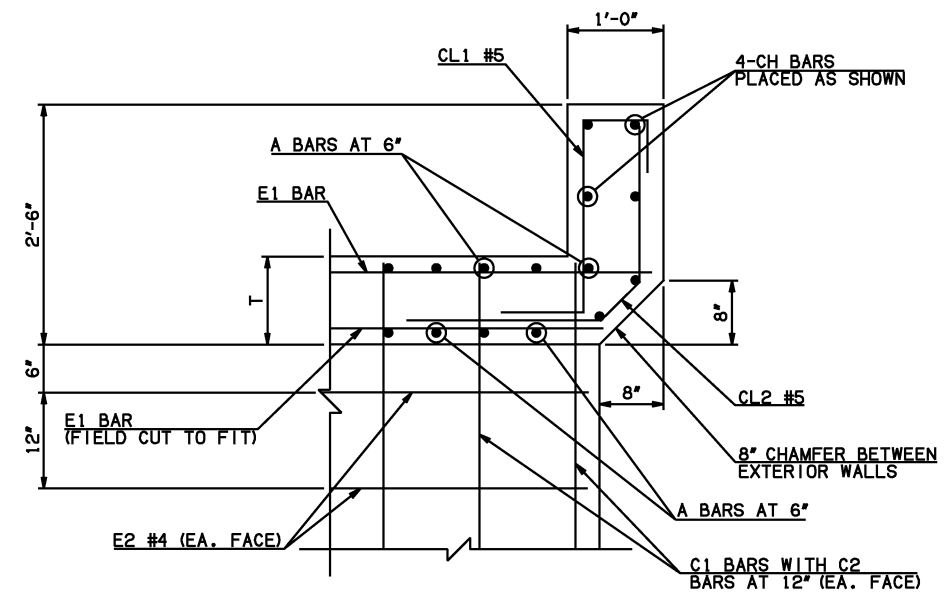


NOTE: F.F. = FAR FACE
N.F. = NEAR FACE

WING ELEVATION



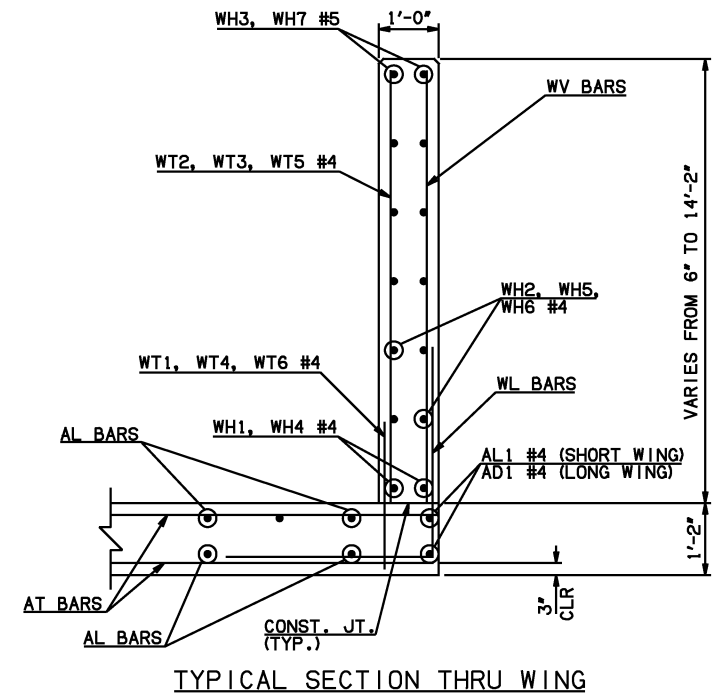
④ HEADWALL DETAIL AT EXTERIOR WALL



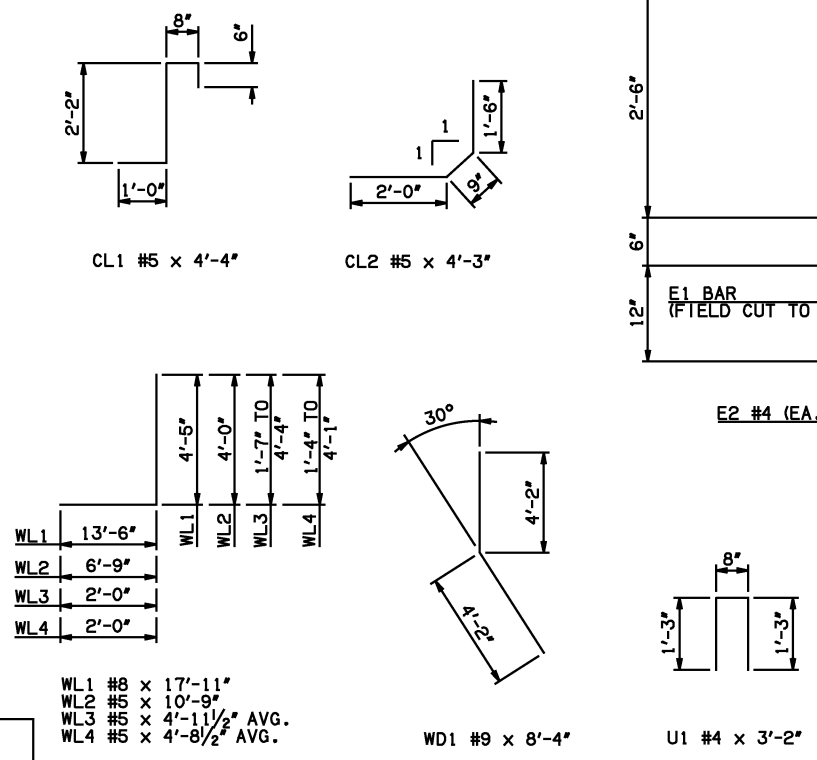
④ HEADWALL DETAIL AT INTERIOR WALL
DIMENSION SHOWN NORMAL TO HEADWALL

NOTES:
① INCLUDES 2'-6\"/>

WINGWALL BAR LIST (LONG AND SHORT WING INCLUDED)					
MARK	SIZE	QTY.	FORM	LENGTH	REMARKS
WD1	#9	54	BNT	8'-4"	
WH1	#4	2	STR	40'-4"	
WH2	#4	26	STR	20'-7 1/2" AVG.	3'-3" TO 38'-0"
WH3	#5	2	STR	41'-7"	
WH4	#4	2	STR	83'-4"	
WH5	#4	6	STR	72'-8 1/2" AVG.	66'-10" TO 78'-7"
WH6	#4	20	STR	32'-2" AVG.	5'-10" TO 58'-6"
WH7	#5	2	STR	83'-5"	
WL1	#8	74	BNT	17'-11"	
WL2	#5	87	BNT	10'-9"	
WL3	#5	9	BNT	4'-11 1/2" AVG.	3'-7" TO 6'-4"
WL4	#5	17	BNT	4'-8 1/2" AVG.	3'-4" TO 6'-1"
WT1	#4	98	STR	2'-10"	
WT2	#4	5	STR	14'-0"	
WT3	#4	30	STR	8'-10" AVG.	3'-10" TO 13'-10"
WT4	#4	9	STR	2'-11 1/2" AVG.	1'-7" TO 4'-4"
WT5	#4	63	STR	8'-7 1/2" AVG.	3'-4" TO 13'-11"
WT6	#4	17	STR	2'-8 1/2" AVG.	1'-4" TO 4'-1"
WV1	#6	4	STR	14'-0"	
WV2	#6	23	STR	11'-11" AVG.	10'-0" TO 13'-10"
WV3	#5	18	STR	6'-9" AVG.	3'-10" TO 9'-8"
WV4	#6	47	STR	11'-11 1/2" AVG.	10'-0" TO 13'-11"
WV5	#5	39	STR	6'-7" AVG.	3'-4" TO 9'-10"
U1	#4	2	BNT	3'-2"	



TYPICAL SECTION THRU WING



MARK		FORM		ONE HEADWALL SHOWN												
				12' SPAN			14' SPAN			16' SPAN			18' SPAN			20' SPAN
SIZE	QTY.	LENGTH	SIZE	QTY.	LENGTH	SIZE	QTY.	LENGTH	SIZE	QTY.	LENGTH	SIZE	QTY.	LENGTH		
CH	STR	#6	4	31'-5"	#6	4	36'-0"	#8	4	40'-10"	#8	4	45'-7"	#8	4	50'-5"
CL1	BNT	#5	32	4'-4"	#5	36	4'-4"	#5	41	4'-4"	#5	46	4'-4"	#5	51	4'-4"
CL2	BNT	#5	32	4'-3"	#5	36	4'-3"	#5	41	4'-3"	#5	46	4'-3"	#5	51	4'-3"
HD	STR	#8	2	31'-5"	#8	2	36'-0"	#9	2	40'-10"	#9	2	45'-7"	#9	2	50'-5"

APPROVED BY BRIDGE ENGINEER *Scott J. Smith* DATE 4/2/10

OKLAHOMA DEPT. OF TRANSPORTATION
BRIDGE STANDARD (ENGLISH)
 RCB CULVERTS - END SECTION DETAILS
 DOUBLE CELL - 12'-0" HEIGHT - 30°
 SHEET NO. 3 OF 3

2009 SPECIFICATIONS RCB-E2-H12-30-3 01E B-734E