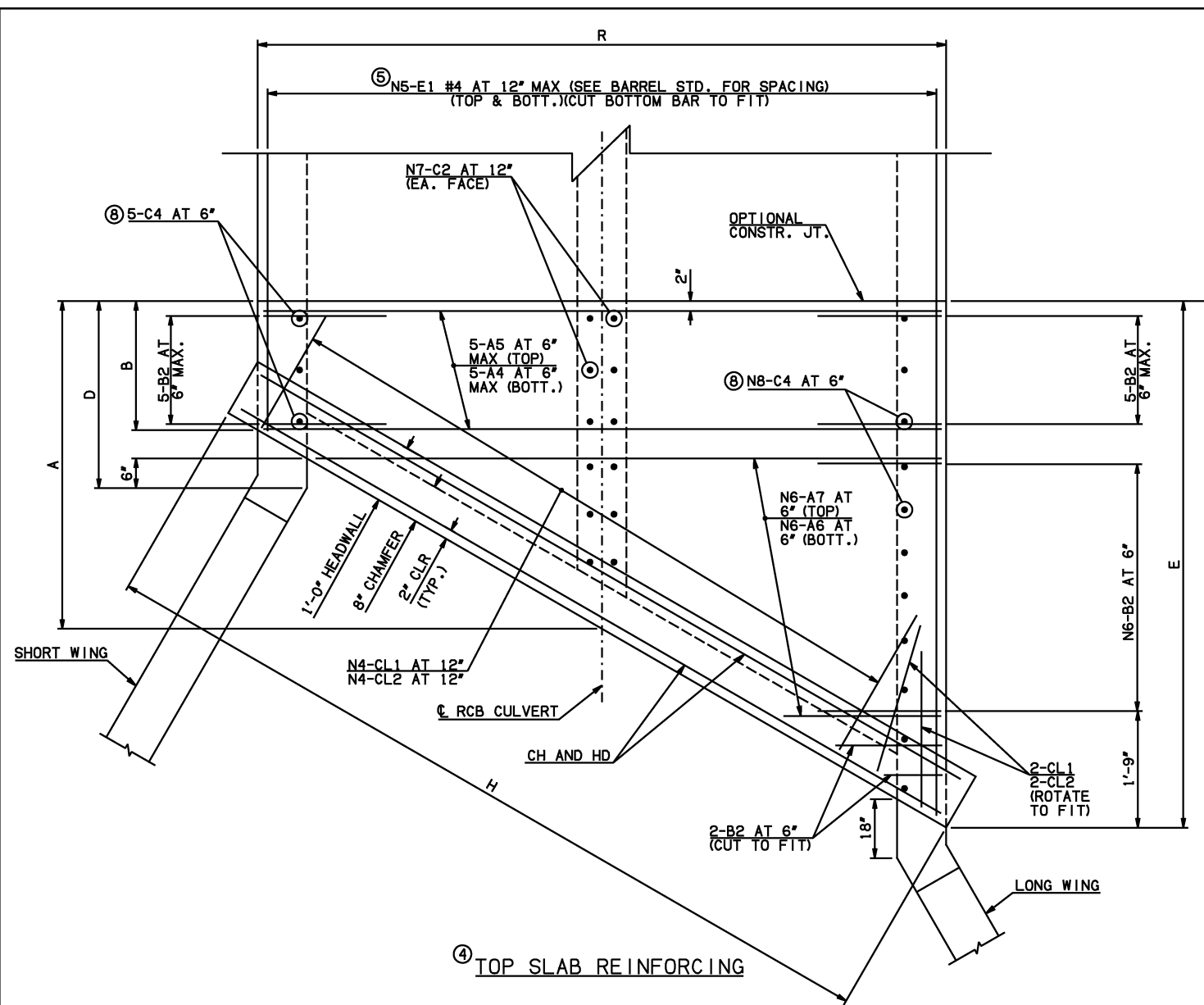
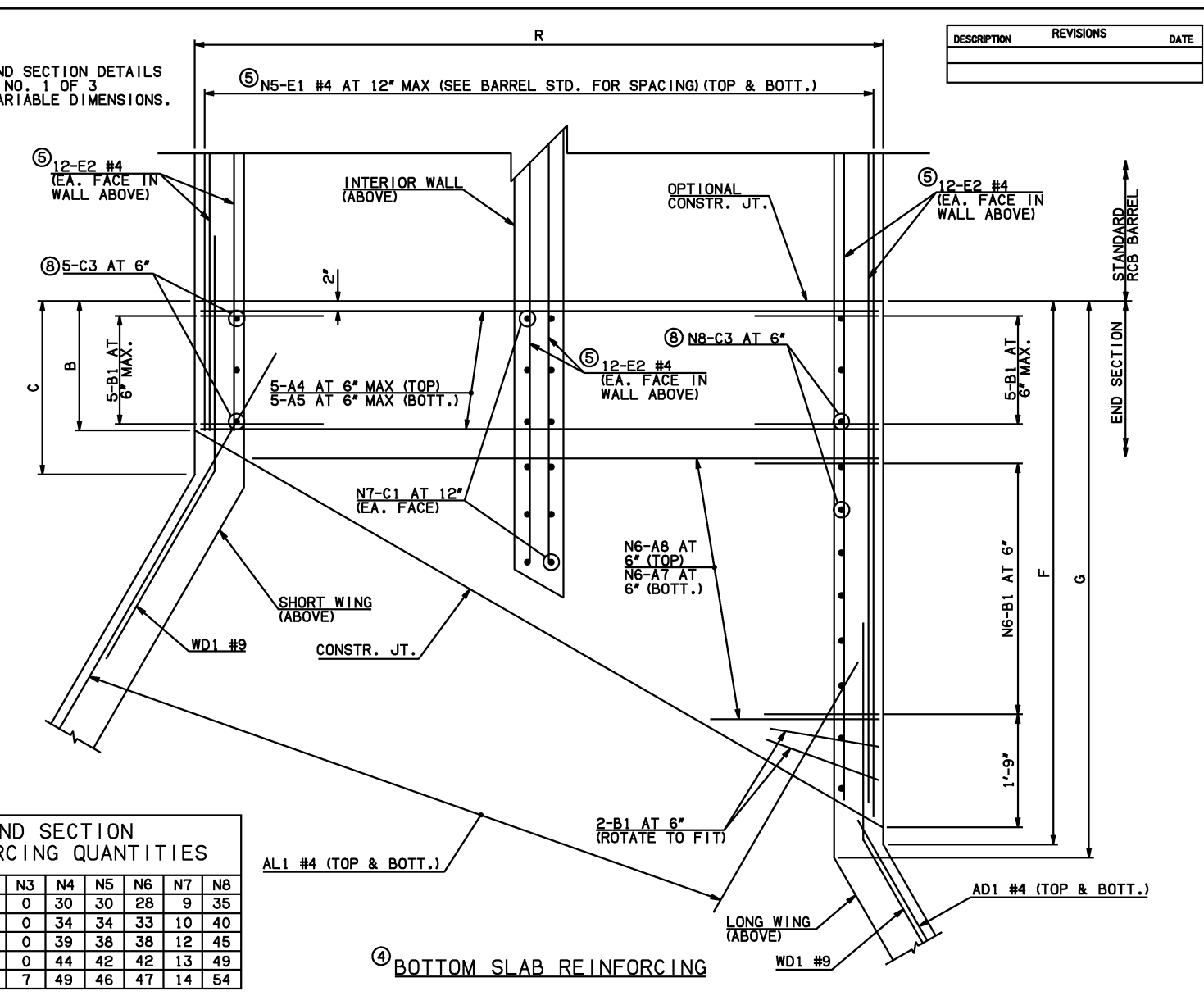


DESCRIPTION	REVISIONS	DATE



NOTE: SEE END SECTION DETAILS SHEET NO. 1 OF 3 FOR VARIABLE DIMENSIONS.



SPAN	N1	N2	N3	N4	N5	N6	N7	N8
12'	24	17	0	30	30	28	9	35
14'	26	15	0	34	34	33	10	40
16'	29	12	0	39	38	38	12	45
18'	32	9	0	44	42	42	13	49
20'	1	33	7	49	46	47	14	54

END CONNECTION BAR LIST

MARK	FORM	ONE END CONNECTION SHOWN																		
		12' SPAN				14' SPAN				16' SPAN				18' SPAN				20' SPAN		
SIZE	QTY.	LENGTH	REMARKS	SIZE	QTY.	LENGTH	REMARKS	SIZE	QTY.	LENGTH	REMARKS	SIZE	QTY.	LENGTH	REMARKS	SIZE	QTY.	LENGTH	REMARKS	
A4	STR	#6	10	26'-8"	#7	10	30'-8"	#7	10	34'-10"	#8	10	39'-0"	#8	10	43'-2"	#8	10	43'-2"	
A5	STR	#9	10	26'-8"	#9	10	30'-8"	#9	10	34'-10"	#9	10	39'-0"	#10	10	43'-2"	#10	10	43'-2"	
A6	STR	#7	28	13'-0 1/2" AVG.	#7	33	15'-2 1/2" AVG.	#8	38	17'-4 1/2" AVG.	#9	42	19'-1" AVG.	#9	47	21'-3" AVG.	#9	47	21'-3" AVG.	1'-4" TO 41'-2"
A7	STR	#9	56	14'-2" AVG.	#9	66	16'-4" AVG.	#9	76	18'-6" AVG.	#9	84	20'-3" AVG.	#10	94	22'-5" AVG.	#10	94	22'-5" AVG.	2'-6" TO 42'-4"
A8	STR	#7	28	14'-2" AVG.	#7	33	16'-4" AVG.	#8	38	18'-6" AVG.	#9	42	20'-3" AVG.	#9	47	22'-5" AVG.	#9	47	22'-5" AVG.	2'-6" TO 42'-4"
B1	BNT	#6	40	5'-4"	#6	45	5'-5"	#6	50	5'-8"	#6	54	6'-1"	#6	59	6'-6"	#6	59	6'-6"	
B2	BNT	#6	40	15'-4"	#6	45	15'-5"	#6	50	15'-8"	#6	54	16'-1"	#6	59	16'-6"	#6	59	16'-6"	
C1	STR	#4	18	2'-3"	#4	20	2'-5"	#4	24	2'-5"	#4	26	2'-6"	#4	28	2'-8"	#4	28	2'-8"	
C2	STR	#4	18	12'-11"	#4	20	13'-1"	#4	24	13'-1"	#4	26	13'-2"	#4	28	13'-4"	#4	28	13'-4"	
C3	STR	#4	40	2'-3"	#4	45	2'-5"	#5	50	2'-9"	#5	54	2'-10"	#5	59	3'-0"	#5	59	3'-0"	
C4	STR	#4	40	12'-11"	#4	45	13'-1"	#5	50	13'-1"	#5	54	13'-2"	#5	59	13'-4"	#5	59	13'-4"	
E1	STR	#4	120	9'-9 1/2" AVG.	#4	136	10'-9" AVG.	#4	152	12'-9 1/2" AVG.	#4	168	13'-9" AVG.	#4	184	14'-9 1/2" AVG.	#4	184	14'-9 1/2" AVG.	2'-4" TO 27'-3"
E2	STR	#4	72	9'-4" AVG.	#4	72	10'-4" AVG.	#4	72	12'-4" AVG.	#4	72	13'-3 1/2" AVG.	#4	72	14'-3 1/2" AVG.	#4	72	14'-3 1/2" AVG.	2'-4", 13'-10", 26'-8"

ITEM	UNIT	12' SPAN	14' SPAN	16' SPAN	18' SPAN	20' SPAN
CLASS AA CONCRETE	CY	191.60	211.40	234.80	258.10	287.40
REINFORCING STEEL	LB	28400.00	31460.00	36320.00	43010.00	47890.00

NOTE: QUANTITIES ABOVE ARE FOR ONE END SECTION, WHICH IS COMPRISED OF ONE END CONNECTION, ONE HEADWALL, ONE APRON, AND TWO WINGWALLS.

- NOTES: ③ QUANTITY SHOWN REPRESENTS TWO SETS. ④ FOR FURTHER INFORMATION REGARDING END SECTION A, B, C, AND E BARS REFER TO RCB CULVERT - BARREL DETAILS. ⑤ LENGTHS OF E1 & E2 BARS SHOWN ARE ADDITIONAL LENGTHS REQUIRED FOR THE END SECTION. LAP SPLICES, AS REQUIRED, SHALL BE IN ACCORDANCE WITH RCB BARREL STANDARD NOTES. ⑥ 4-SETS OF N5-E1 BARS REQUIRED. ⑦ 3-SETS OF 24-E2 BARS REQUIRED WITH LENGTHS AS SHOWN CORRESPONDING TO SHORT EXTERIOR WALL, INTERIOR WALL, AND LONG EXTERIOR WALL. ⑧ C3 AND C4 BAR SIZE AND SPACING MAY DIFFER FROM BARREL SECTION.

APPROVED BY BRIDGE ENGINEER *Scott J. Smith* DATE 4/2/10

OKLAHOMA DEPT. OF TRANSPORTATION
BRIDGE STANDARD (ENGLISH)
 RCB CULVERTS - END SECTION DETAILS
 DOUBLE CELL - 12'-0" HEIGHT - 30"
 SHEET NO. 2 OF 3

2009 SPECIFICATIONS | RCB-E2-H12-30-2 | 01E | B-733E