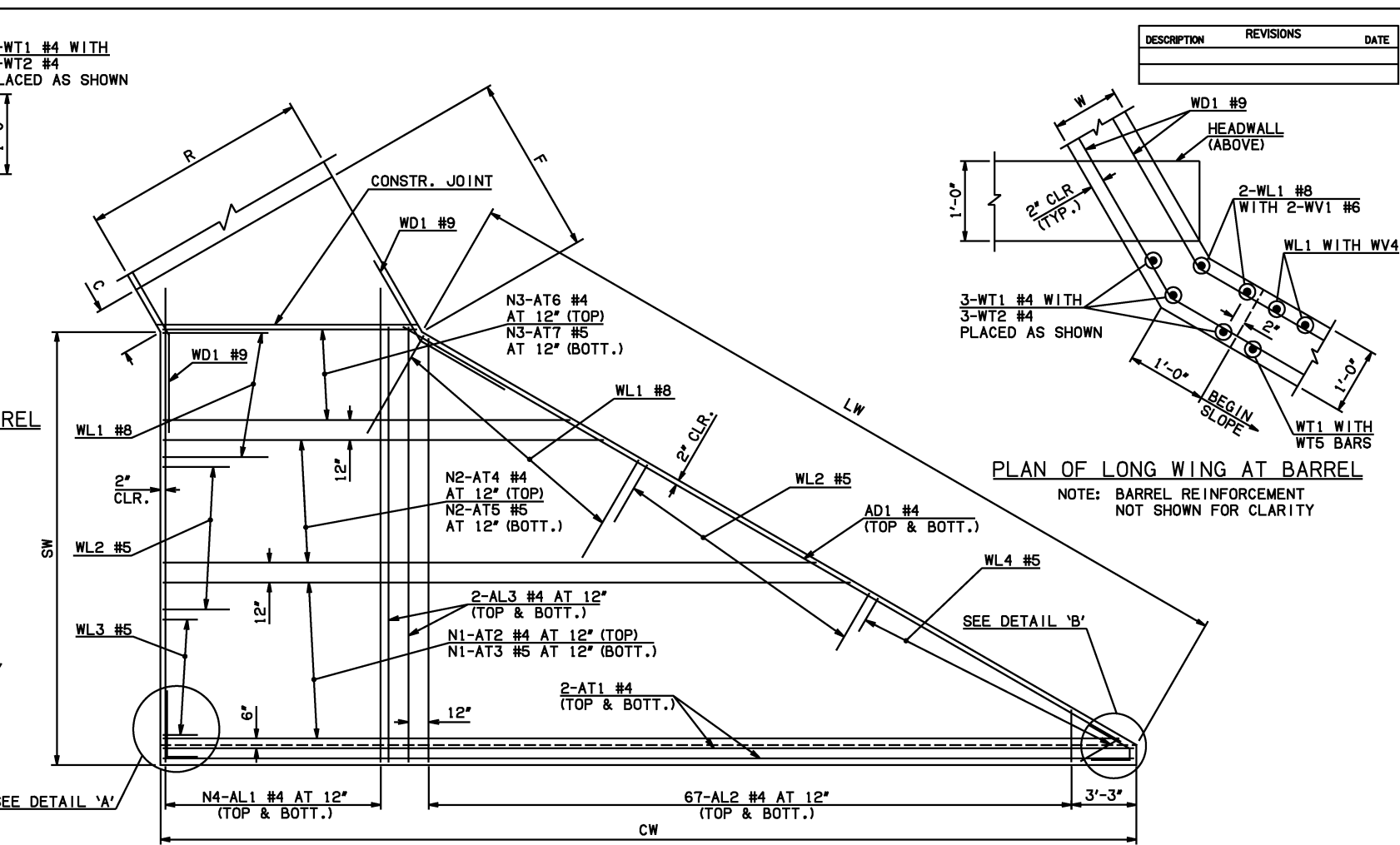
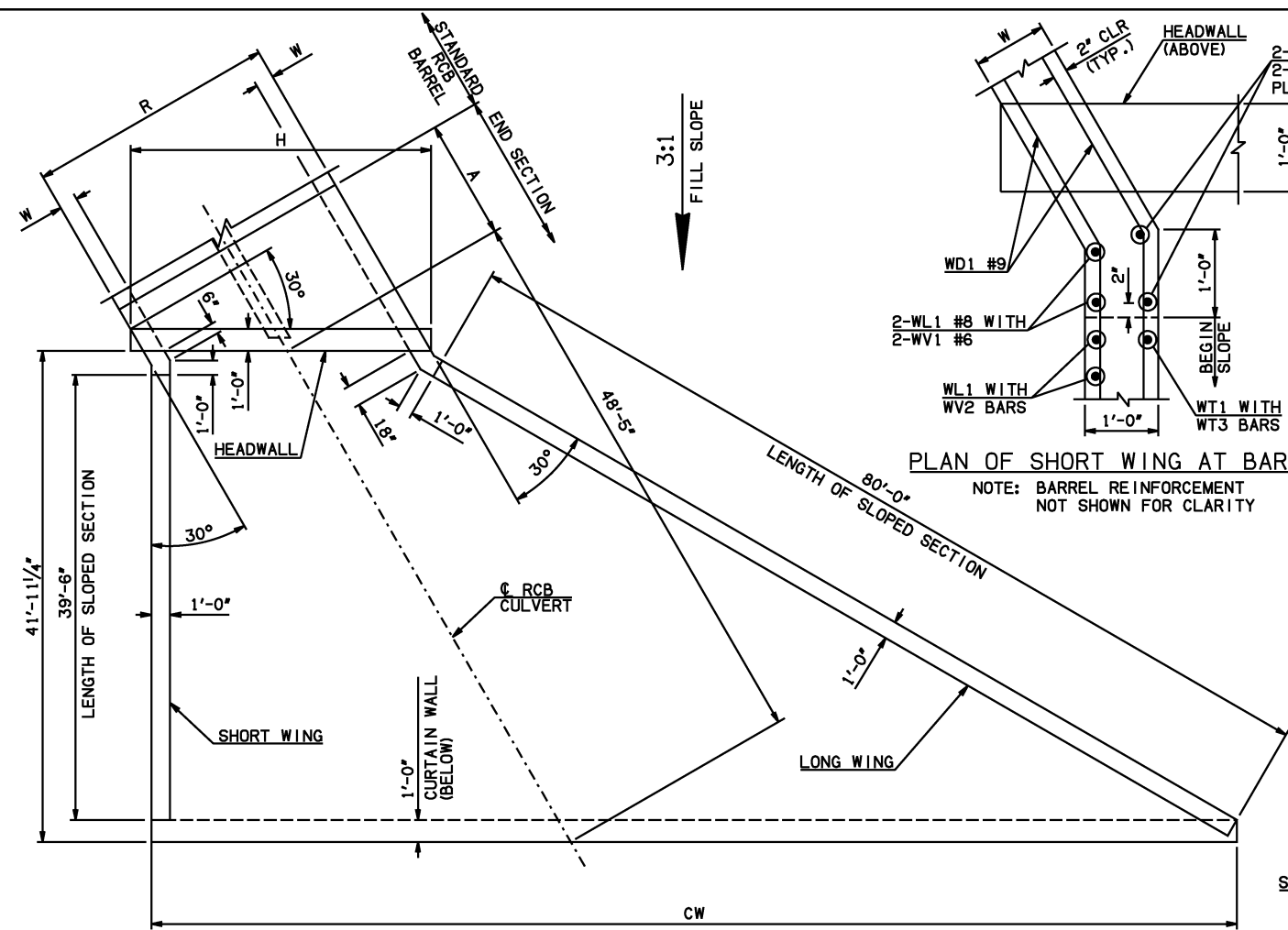


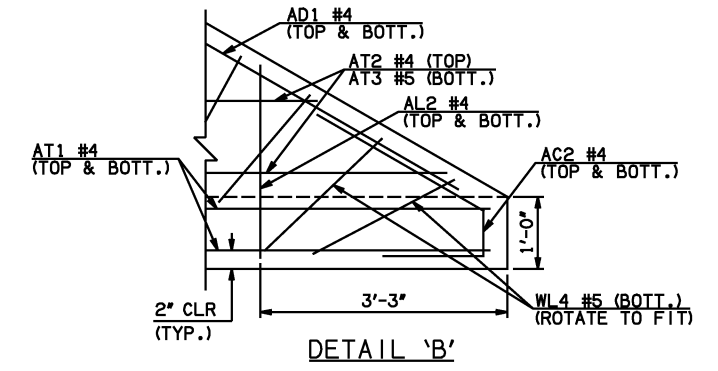
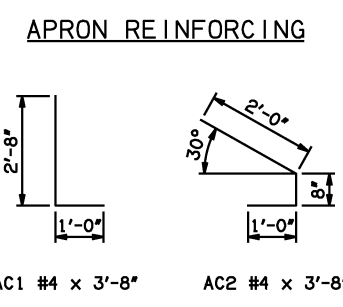
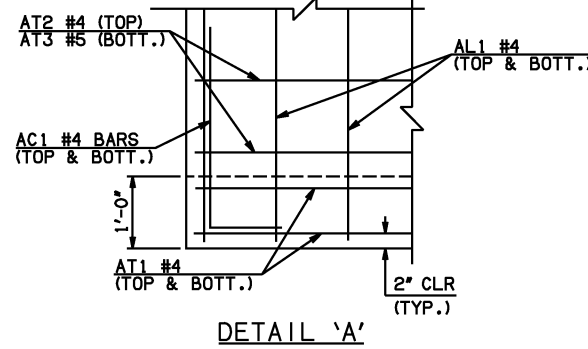
DESCRIPTION	REVISIONS	DATE



END SECTION PLAN

NOTE: SEE END SECTION DETAILS SHEET NO. 2 OF 3 FOR VARIABLE REINFORCING QUANTITIES.

SPAN	W	A	B	C	CW	D	E	F	G	H	LW	R	SW
12'	12'	10'-0"	2'-2 1/2"	3'-0 1/4"	101'-0 1/4"	3'-3 1/2"	17'-9 1/2"	18'-5 1/2"	18'-8 1/2"	31'-9"	80'-8 3/4"	27'-0"	41'-2 3/4"
14'	12'	11'-0"	2'-0 1/2"	2'-10 1/4"	105'-7 1/2"	3'-1 1/2"	19'-11 1/2"	20'-7 1/4"	20'-10 1/2"	36'-4 1/2"	80'-8 3/4"	31'-0"	41'-2 3/4"
16'	13'	13'-0"	2'-10 1/4"	3'-10 1/4"	110'-3"	3'-11 3/4"	23'-1 3/4"	23'-10 3/4"	24'-0 1/4"	41'-2 1/4"	80'-6 3/4"	35'-2"	41'-0 3/4"
18'	14'	14'-0"	2'-7 3/4"	3'-10"	114'-10 1/2"	3'-9 3/4"	25'-4 1/4"	26'-2 1/2"	26'-2 1/4"	46'-0"	80'-4 3/4"	39'-4"	40'-10 3/4"
20'	15'	15'-0"	2'-5 1/4"	3'-10"	119'-6"	3'-8"	27'-6 3/4"	28'-6"	28'-4"	50'-9 3/4"	80'-2 3/4"	43'-6"	40'-8 3/4"



APRON BAR LIST

MARK	SIZE	FORM	12' SPAN			14' SPAN			16' SPAN			18' SPAN			20' SPAN		
			QTY.	LENGTH	REMARKS	QTY.	LENGTH	REMARKS	QTY.	LENGTH	REMARKS	QTY.	LENGTH	REMARKS	QTY.	LENGTH	REMARKS
AC1	#4	BNT	2	3'-8"		2	3'-8"		2	3'-8"		2	3'-8"		2	3'-8"	
AC2	#4	BNT	2	3'-8"		2	3'-8"		2	3'-8"		2	3'-8"		2	3'-8"	
AD1	#4	STR	2	84'-0"		2	84'-0"		2	84'-0"		2	84'-0"		2	84'-0"	
AL1	#4	STR	60	43'-9"		68	43'-9"		78	43'-9"		88	43'-9"		98	43'-9"	
AL2	#4	STR	134	21'-6 1/2" AVG.	2'-6" TO 40'-7"	134	21'-6 1/2" AVG.	2'-6" TO 40'-7"	134	21'-6 1/2" AVG.	2'-6" TO 40'-7"	134	21'-6 1/2" AVG.	2'-6" TO 40'-7"	134	21'-6 1/2" AVG.	2'-6" TO 40'-7"
AL3	#4	STR	4	41'-9"		4	41'-9"		4	41'-9"		4	41'-9"		4	41'-9"	
AT1	#4	STR	4	103'-2" ①		4	107'-9" ①		4	112'-5" ①		4	117'-0" ①		4	124'-1" ②	
AT2	#4	STR	24	82'-6" AVG. ①	62'-7" TO 102'-5"	26	85'-4 1/2" AVG. ①	63'-9" TO 107'-0"	29	87'-5" AVG. ①	63'-2" TO 111'-8"	32	89'-5" AVG. ①	62'-7" TO 116'-3"	1	123'-4" ②	
AT3	#5	STR	24	82'-6" AVG. ①	62'-7" TO 102'-5"	26	85'-4 1/2" AVG. ①	63'-9" TO 107'-0"	29	87'-5" AVG. ①	63'-2" TO 111'-8"	32	89'-5" AVG. ①	62'-7" TO 116'-3"	1	123'-4" ②	
AT4	#4	STR	17	44'-5 1/2" AVG.	30'-7" TO 58'-4"	15	47'-4 1/2" AVG.	35'-3" TO 59'-6"	12	49'-4 1/2" AVG.	39'-10" TO 58'-11"	9	51'-5" AVG.	44'-6" TO 58'-4"	33	91'-5 1/2" AVG. ①	63'-9" TO 119'-2"
AT5	#5	STR	17	44'-5 1/2" AVG.	30'-7" TO 58'-4"	15	47'-4 1/2" AVG.	35'-3" TO 59'-6"	12	49'-4 1/2" AVG.	39'-10" TO 58'-11"	9	51'-5" AVG.	44'-6" TO 58'-4"	33	91'-5 1/2" AVG. ①	63'-9" TO 119'-2"
AT6	#4		0			0			0			0		7	54'-3 1/2" AVG.	49'-1" TO 59'-6"	
AT7	#5		0			0			0			0		7	54'-3 1/2" AVG.	49'-1" TO 59'-6"	

- ① INCLUDES 2'-6" LAP.
- ② INCLUDES TWO 2'-6" LAPS.
- ③ QUANTITY SHOWN REPRESENTS TWO SETS.

APPROVED BY BRIDGE ENGINEER *Scott Luch* DATE 4/2/10

OKLAHOMA DEPT. OF TRANSPORTATION
BRIDGE STANDARD (ENGLISH)
 RCB CULVERTS - END SECTION DETAILS
 DOUBLE CELL - 12'-0" HEIGHT - 30°
 SHEET NO. 1 OF 3

2009 SPECIFICATIONS | RCB-E2-H12-30-1 | 01E | B-732E