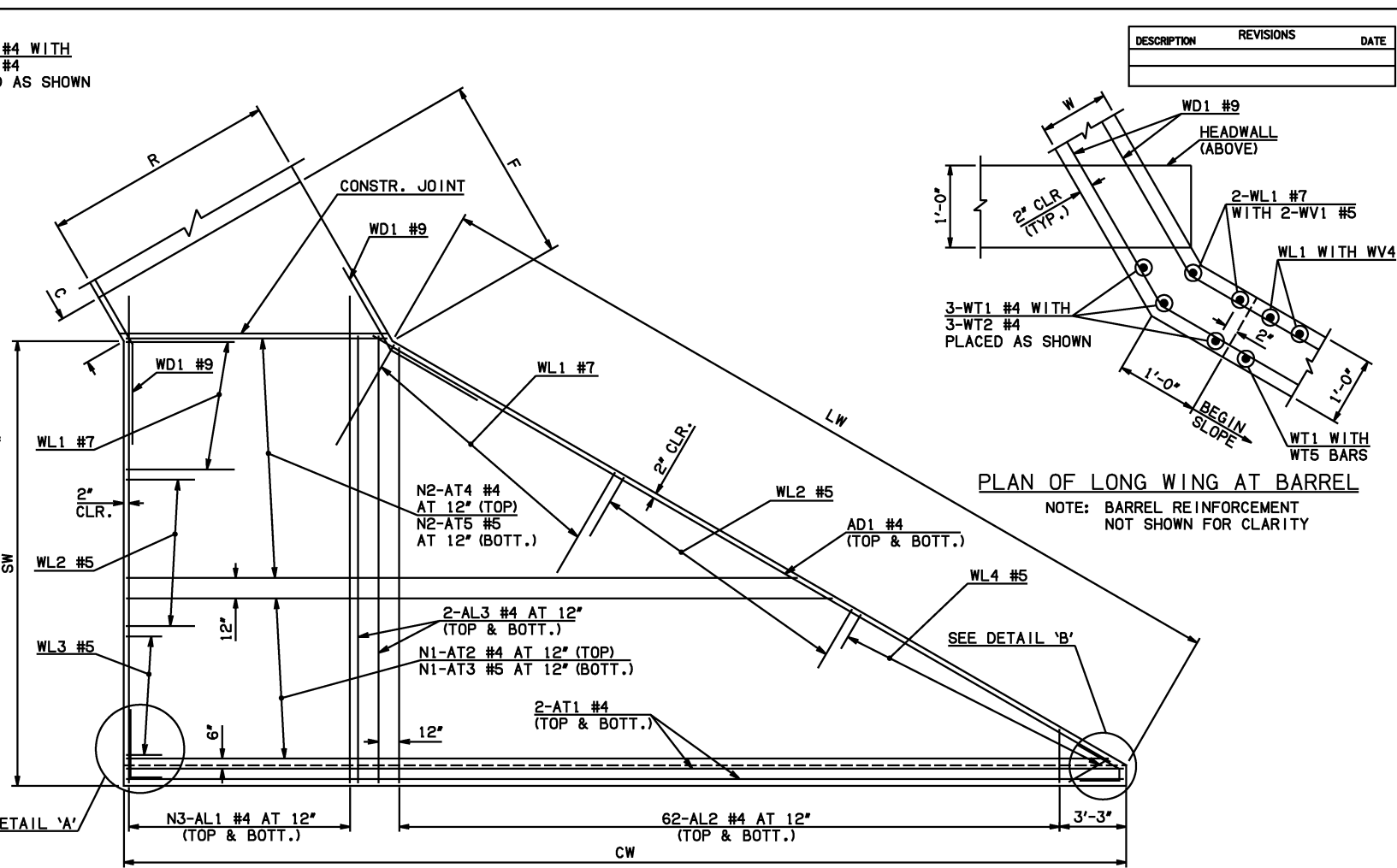
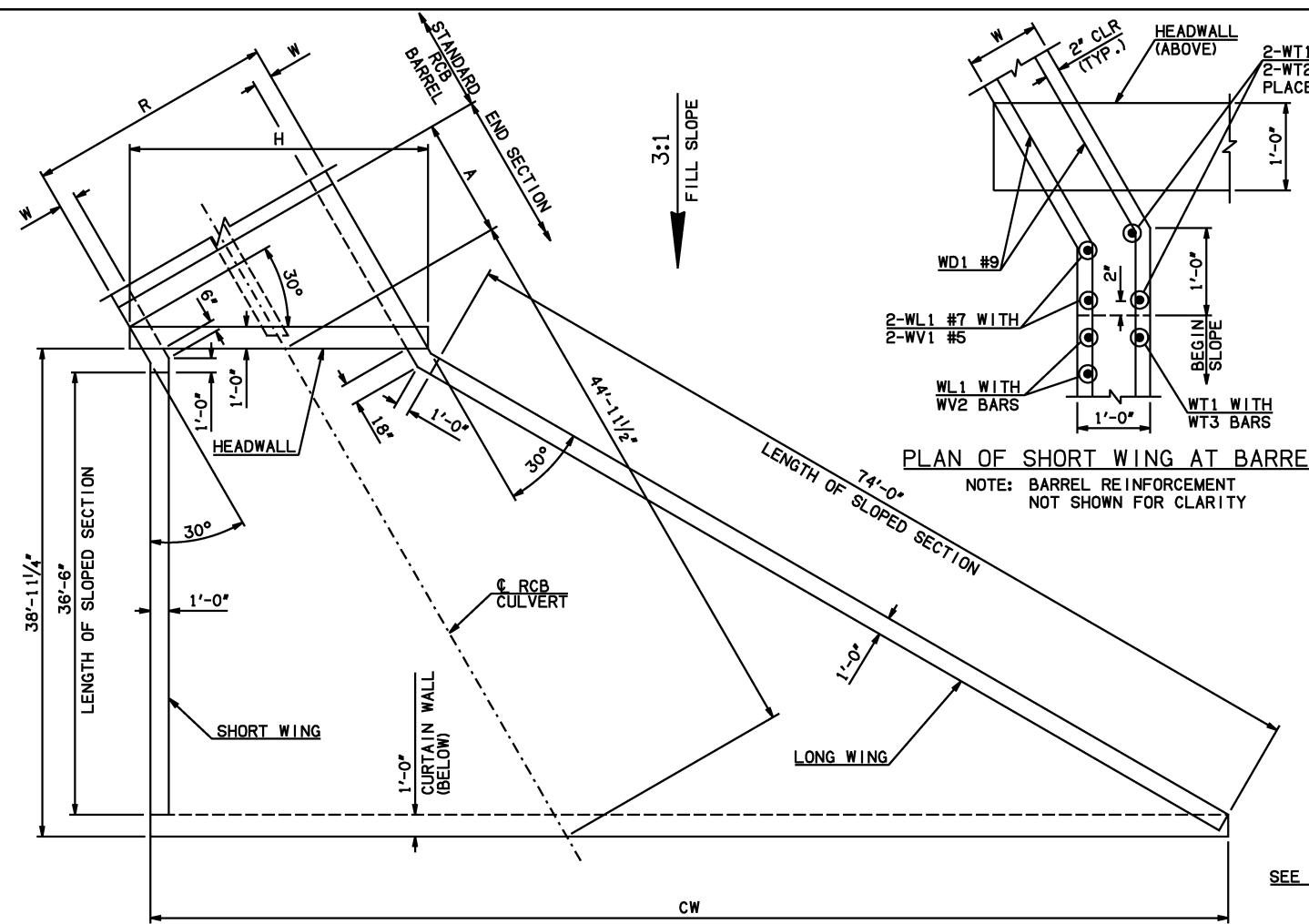


DESCRIPTION	REVISIONS	DATE

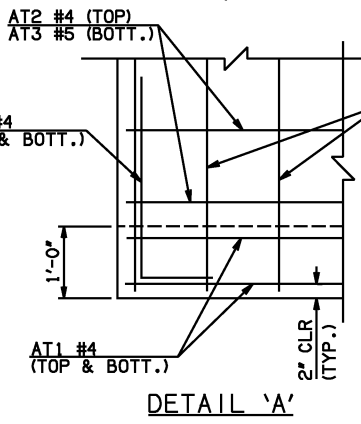


END SECTION PLAN

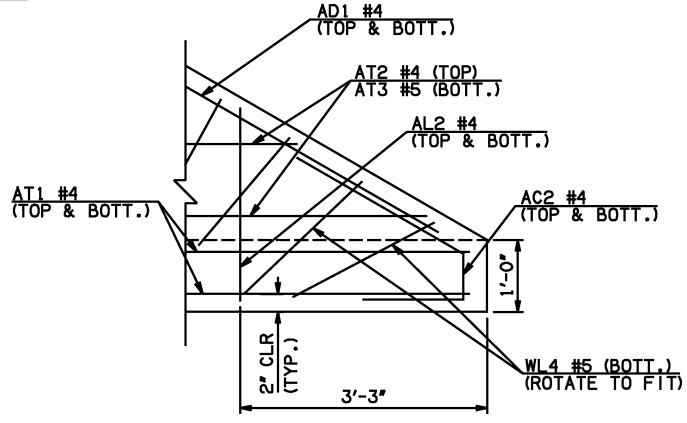
NOTE: SEE END SECTION DETAILS SHEET NO. 2 OF 3 FOR VARIABLE REINFORCING QUANTITIES.

END SECTION VARIABLE DIMENSIONS

SPAN	W	A	B	C	CW	D	E	F	G	H	LW	R	SW
12'	12'	10'-0"	2'-2 1/2"	3'-0 1/4"	95'-9 3/4"	3'-3 1/2"	17'-9 1/2"	18'-5 1/2"	18'-8 1/2"	31'-9"	74'-8 3/4"	27'-0"	38'-2 3/4"
14'	12'	11'-0"	2'-0 1/2"	2'-10 1/4"	100'-5 1/4"	3'-1 1/2"	19'-11 1/2"	20'-7 1/4"	20'-10 1/2"	36'-4 1/2"	74'-8 3/4"	31'-0"	38'-2 3/4"
16'	13'	13'-0"	2'-10 1/4"	3'-10 1/4"	105'-0 3/4"	3'-11 3/4"	23'-1 3/4"	23'-10 3/4"	24'-0 1/4"	41'-2 1/4"	74'-6 3/4"	35'-2"	38'-0 3/4"
18'	14'	14'-0"	2'-7 3/4"	3'-10"	109'-8"	3'-9 3/4"	25'-4 1/4"	26'-2 1/2"	46'-0"	74'-4 3/4"	39'-4"	37'-10 3/4"	
20'	15'	15'-0"	2'-5 1/4"	3'-10"	114'-3 1/2"	3'-8"	27'-6 3/4"	28'-6"	28'-4"	50'-9 3/4"	74'-2 3/4"	43'-6"	37'-8 3/4"



APRON REINFORCING



APRON BAR LIST

MARK	SIZE	FORM	ONE APRON SHOWN																			
			12' SPAN				14' SPAN				16' SPAN				18' SPAN				20' SPAN			
			QTY.	LENGTH	REMARKS	QTY.	LENGTH	REMARKS	QTY.	LENGTH	REMARKS	QTY.	LENGTH	REMARKS	QTY.	LENGTH	REMARKS					
	AC1	#4	BNT	2	3'-8"		2	3'-8"		2	3'-8"		2	3'-8"		2	3'-8"		2	3'-8"		
	AC2	#4	BNT	2	3'-8"		2	3'-8"		2	3'-8"		2	3'-8"		2	3'-8"		2	3'-8"		
①	AD1	#4	STR	2	78'-0"		2	78'-0"		2	78'-0"		2	78'-0"		2	78'-0"		2	78'-0"		
	AL1	#4	STR	60	40'-9"		68	40'-9"		78	40'-9"		88	40'-9"		98	40'-9"					
②	AL2	#4	STR	124	20'-1" AVG.	2'-6" TO 37'-8"	124	20'-1" AVG.	2'-6" TO 37'-8"	124	20'-1" AVG.	2'-6" TO 37'-8"	124	20'-1" AVG.	2'-6" TO 37'-8"	124	20'-1" AVG.	2'-6" TO 37'-8"				
	AL3	#4	STR	4	38'-9"		4	38'-9"		4	38'-9"		4	38'-9"		4	38'-9"					
①	AT1	#4	STR	4	97'-11"		4	102'-7"		4	107'-2"		4	111'-10"		4	116'-5"					
①	AT2	#4	STR	21	79'-10 1/2" AVG.	62'-7" TO 97'-2"	23	82'-9 1/2" AVG.	63'-9" TO 101'-10"	26	84'-9 1/2" AVG.	63'-2" TO 106'-5"	29	86'-10" AVG.	62'-7" TO 111'-1"	31	89'-8 1/2" AVG.	63'-9" TO 115'-8"				
①	AT3	#5	STR	21	79'-10 1/2" AVG.	62'-7" TO 97'-2"	23	82'-9 1/2" AVG.	63'-9" TO 101'-10"	26	84'-9 1/2" AVG.	63'-2" TO 106'-5"	29	86'-10" AVG.	62'-7" TO 111'-1"	31	89'-8 1/2" AVG.	63'-9" TO 115'-8"				
	AT4	#4	STR	17	44'-5 1/2" AVG.	30'-7" TO 58'-4"	15	47'-4 1/2" AVG.	35'-3" TO 59'-6"	12	49'-4 1/2" AVG.	39'-10" TO 58'-11"	9	51'-5" AVG.	44'-6" TO 58'-4"	7	54'-3 1/2" AVG.	49'-1" TO 59'-6"				
	AT5	#5	STR	17	44'-5 1/2" AVG.	30'-7" TO 58'-4"	15	47'-4 1/2" AVG.	35'-3" TO 59'-6"	12	49'-4 1/2" AVG.	39'-10" TO 58'-11"	9	51'-5" AVG.	44'-6" TO 58'-4"	7	54'-3 1/2" AVG.	49'-1" TO 59'-6"				
	CH	#4	STR	4	31'-5"		4	36'-0"		4	40'-10"		4	45'-7"		4	50'-5"					
	CL1	#4	BNT	32	4'-4"		36	4'-4"		41	4'-4"		46	4'-4"		51	4'-4"					
	CL2	#4	BNT	32	4'-3"		36	4'-3"		41	4'-3"		46	4'-3"		51	4'-3"					
	HD		STR	2	31'-5"		2	36'-0"		2	40'-10"		2	45'-7"		2	50'-5"					

- ① INCLUDES 2'-6" LAP.
- ② QUANTITY SHOWN REPRESENTS TWO SETS.

APPROVED BY BRIDGE ENGINEER *Scott J. Smith* DATE 4/2/10

OKLAHOMA DEPT. OF TRANSPORTATION
BRIDGE STANDARD (ENGLISH)
 RCB CULVERTS - END SECTION DETAILS
 DOUBLE CELL - 11'-0" HEIGHT - 30°
 SHEET NO. 1 OF 3

2009 SPECIFICATIONS | RCB-E2-H11-30-1 | 01E | B-729E