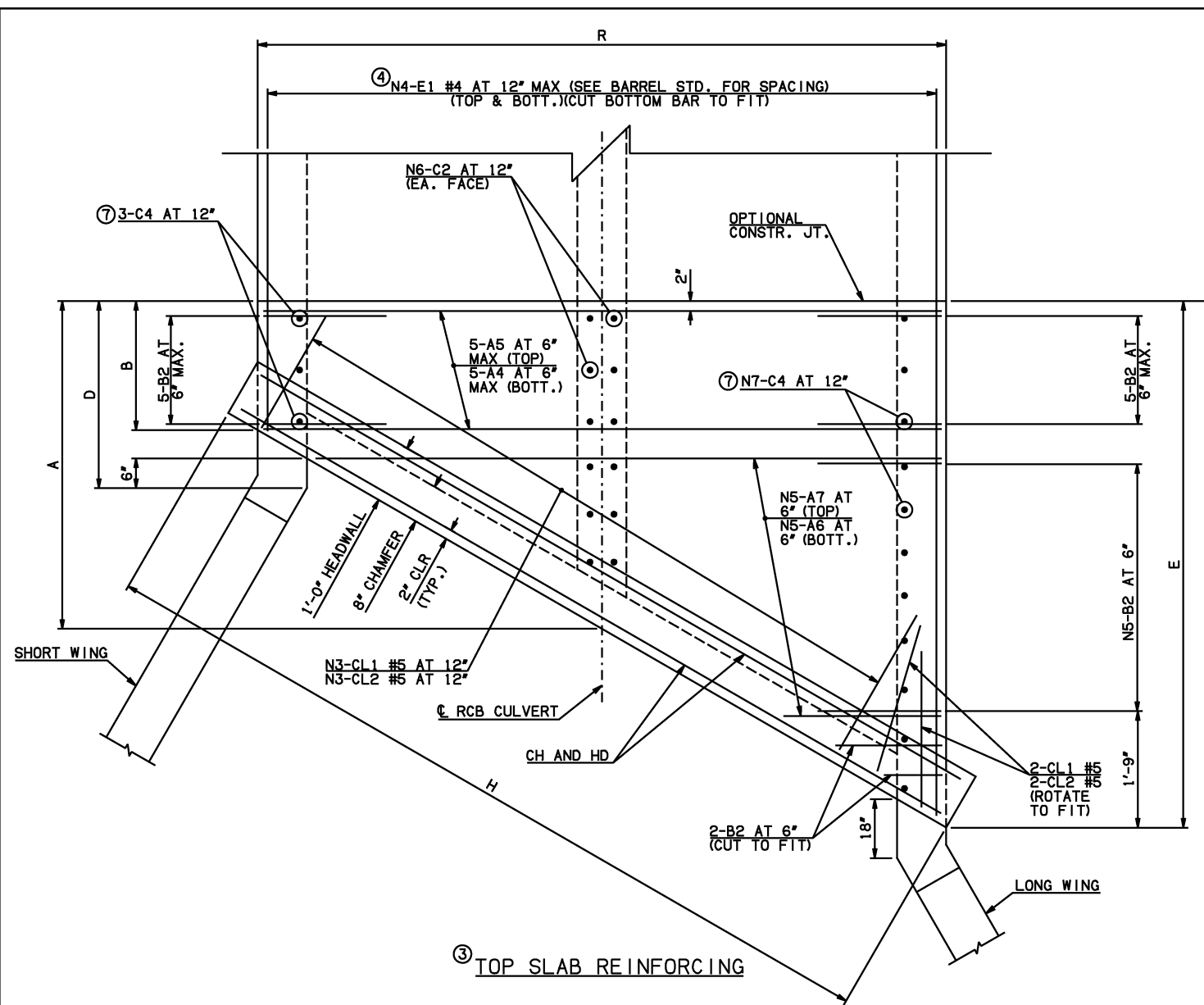


| DESCRIPTION | REVISIONS | DATE |
|-------------|-----------|------|
| | | |



NOTE: SEE END SECTION DETAILS SHEET NO. 1 OF 3 FOR VARIABLE DIMENSIONS.

STANDARD RCB BARREL

END SECTION

1'-9"

18"

5-B2 AT 6" MAX.

5-B2 AT 6" MAX.

5-B2 AT 6" MAX.

5-B2 AT 6" MAX.

5-B2 AT 6" MAX.

5-B2 AT 6" MAX.

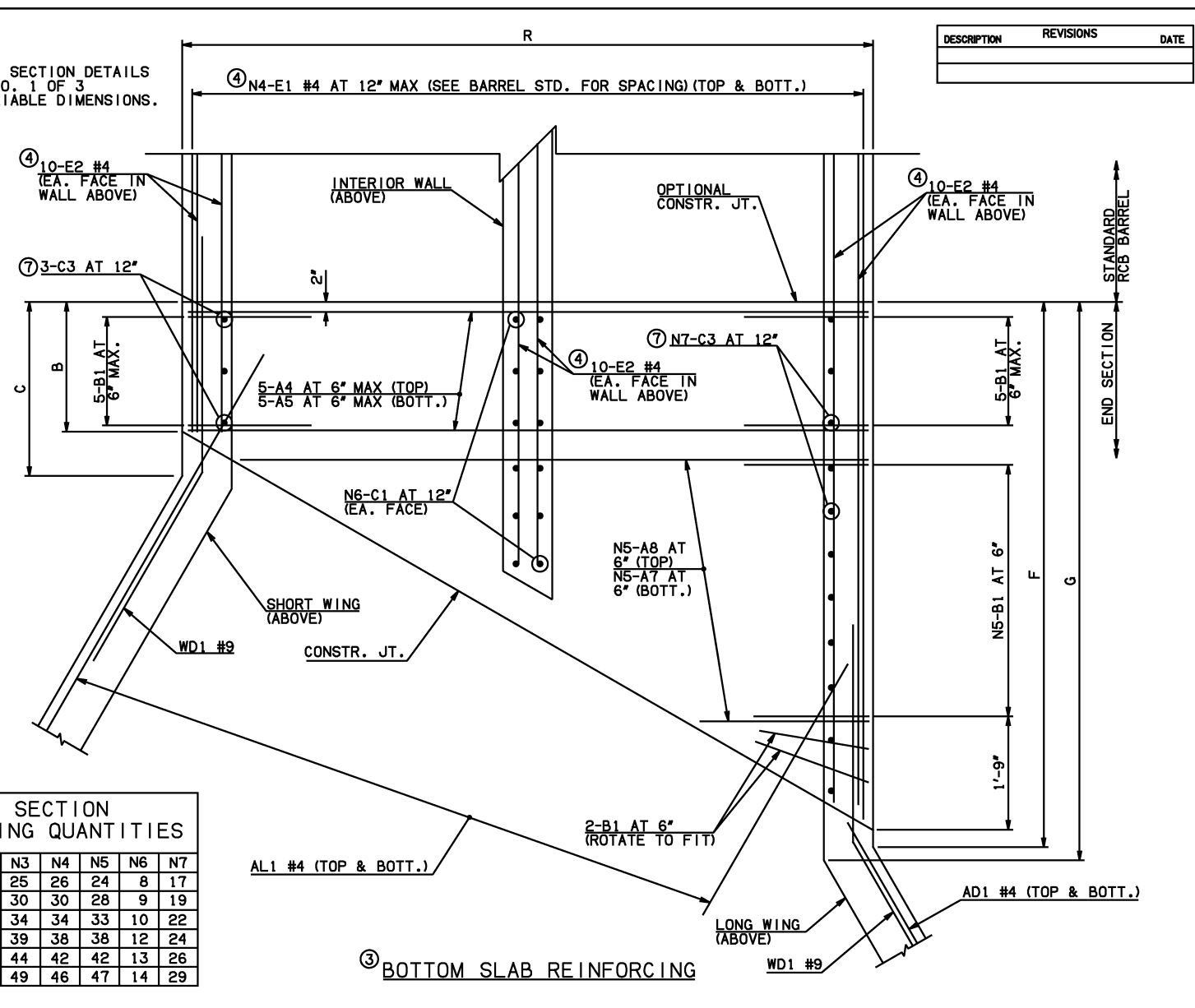
5-B2 AT 6" MAX.

5-B2 AT 6" MAX.

5-B2 AT 6" MAX.

5-B2 AT 6" MAX.

5-B2 AT 6" MAX.



END SECTION REINFORCING QUANTITIES

| SPAN | N1 | N2 | N3 | N4 | N5 | N6 | N7 |
|------|----|----|----|----|----|----|----|
| 10' | 15 | 20 | 25 | 26 | 24 | 8 | 17 |
| 12' | 18 | 17 | 30 | 30 | 28 | 9 | 19 |
| 14' | 20 | 15 | 34 | 34 | 33 | 10 | 22 |
| 16' | 23 | 12 | 39 | 38 | 38 | 12 | 24 |
| 18' | 26 | 9 | 44 | 42 | 42 | 13 | 26 |
| 20' | 28 | 7 | 49 | 46 | 47 | 14 | 29 |

END CONNECTION BAR LIST

| MARK | FORM | ONE END CONNECTION SHOWN | | | | | | | | | | | | | | | | | | | | | | | |
|------|------|--------------------------|------|-----------------|------------------------|------|------|-----------------|-----------------------|------|----------|-----------------|------------------------|----------|------|-----------------|------------------------|------|------|-----------------|------------------------|-----|-----|-----------------|------------------------|
| | | 10' SPAN | | | 12' SPAN | | | 14' SPAN | | | 16' SPAN | | | 18' SPAN | | | 20' SPAN | | | | | | | | |
| | | SIZE | QTY. | LENGTH | REMARKS | SIZE | QTY. | LENGTH | REMARKS | SIZE | QTY. | LENGTH | REMARKS | SIZE | QTY. | LENGTH | REMARKS | SIZE | QTY. | LENGTH | REMARKS | | | | |
| A4 | STR | #5 | 10 | 22'-8" | | #6 | 10 | 26'-8" | | #7 | 10 | 30'-8" | | #7 | 10 | 34'-10" | | #8 | 10 | 39'-0" | | #8 | 10 | 43'-2" | |
| A5 | STR | #8 | 10 | 22'-8" | | #9 | 10 | 26'-8" | | #9 | 10 | 30'-8" | | #9 | 10 | 34'-10" | | #10 | 10 | 39'-0" | | #10 | 10 | 43'-2" | |
| A6 | STR | #7 | 24 | 11'-3 1/2" AVG. | 1'-4" TO 21'-3" | #7 | 28 | 13'-0 1/2" AVG. | 1'-4" TO 24'-9" | #7 | 33 | 15'-2 1/2" AVG. | 1'-4" TO 29'-1" | #8 | 38 | 17'-4 1/2" AVG. | 1'-4" TO 33'-5" | #9 | 42 | 19'-1" AVG. | 1'-4" TO 36'-10" | #9 | 47 | 21'-3" AVG. | 1'-4" TO 41'-2" |
| A7 | STR | #8 | 48 | 12'-5 1/2" AVG. | 2'-6" TO 22'-5" | #9 | 56 | 14'-2" AVG. | 2'-6" TO 25'-10" | #9 | 66 | 16'-4" AVG. | 2'-6" TO 30'-2" | #9 | 76 | 18'-6" AVG. | 2'-6" TO 34'-6" | #10 | 84 | 20'-3" AVG. | 2'-6" TO 38'-0" | #10 | 94 | 22'-5" AVG. | 2'-6" TO 42'-4" |
| A8 | STR | #7 | 24 | 12'-5 1/2" AVG. | 2'-6" TO 22'-5" | #7 | 28 | 14'-2" AVG. | 2'-6" TO 25'-10" | #7 | 33 | 16'-4" AVG. | 2'-6" TO 30'-2" | #8 | 38 | 18'-6" AVG. | 2'-6" TO 34'-6" | #9 | 42 | 20'-3" AVG. | 2'-6" TO 38'-0" | #9 | 47 | 22'-5" AVG. | 2'-6" TO 42'-4" |
| B1 | BNT | #5 | 36 | 5'-1" | | #6 | 40 | 5'-0" | | #6 | 45 | 5'-1" | | #6 | 50 | 5'-6" | | #6 | 54 | 6'-0" | | #6 | 59 | 6'-6" | |
| B2 | BNT | #5 | 36 | 13'-5" | | #6 | 40 | 13'-0" | | #6 | 45 | 13'-1" | | #6 | 50 | 13'-6" | | #6 | 54 | 14'-0" | | #6 | 59 | 14'-6" | |
| C1 | STR | #4 | 16 | 2'-2" | | #4 | 18 | 2'-3" | | #4 | 20 | 2'-4" | | #4 | 24 | 2'-5" | | #4 | 26 | 2'-6" | | #4 | 28 | 2'-8" | |
| C2 | STR | #4 | 16 | 10'-10" | | #4 | 18 | 10'-10" | | #4 | 20 | 11'-0" | | #4 | 24 | 11'-1" | | #4 | 26 | 11'-2" | | #4 | 28 | 11'-4" | |
| C3 | STR | #5 | 20 | 2'-6" | | #5 | 22 | 2'-7" | | #5 | 25 | 2'-8" | | #5 | 27 | 2'-9" | | #4 | 29 | 2'-6" | | #4 | 32 | 2'-8" | |
| C4 | STR | #5 | 20 | 10'-10" | | #5 | 22 | 10'-11" | | #5 | 25 | 11'-0" | | #5 | 27 | 11'-1" | | #4 | 29 | 11'-2" | | #4 | 32 | 11'-4" | |
| E1 | STR | #4 | 104 | 8'-9 1/2" AVG. | 2'-3" TO 15'-4" | #4 | 120 | 9'-9 1/2" AVG. | 2'-1" TO 17'-6" | #4 | 136 | 10'-9" AVG. | 1'-11" TO 19'-7" | #4 | 152 | 12'-9 1/2" AVG. | 2'-9" TO 22'-10" | #4 | 168 | 13'-9" AVG. | 2'-6" TO 25'-0" | #4 | 184 | 14'-9 1/2" AVG. | 2'-4" TO 27'-3" |
| E2 | STR | #4 | 60 | 8'-4" AVG. | 2'-3", 7'-10", 14'-11" | #4 | 60 | 9'-4" AVG. | 2'-1", 8'-10", 17'-1" | #4 | 60 | 10'-4" AVG. | 1'-11", 9'-10", 19'-3" | #4 | 60 | 12'-4" AVG. | 2'-9", 11'-10", 22'-5" | #4 | 60 | 13'-3 1/2" AVG. | 2'-6", 12'-10", 24'-7" | #4 | 60 | 14'-3 1/2" AVG. | 2'-4", 13'-10", 26'-8" |

| QUANTITIES | | | | | | | |
|-------------------|------|----------|----------|----------|----------|----------|----------|
| ITEM | UNIT | 10' SPAN | 12' SPAN | 14' SPAN | 16' SPAN | 18' SPAN | 20' SPAN |
| CLASS AA CONCRETE | CY | 134.00 | 148.40 | 164.30 | 187.40 | 208.50 | 235.70 |
| REINFORCING STEEL | LB | 19160.00 | 22430.00 | 25350.00 | 29790.00 | 36180.00 | 40870.00 |

NOTE: QUANTITIES ABOVE ARE FOR ONE END SECTION, WHICH IS COMPRISED OF ONE END CONNECTION, ONE HEADWALL, ONE APRON, AND TWO WINGWALLS.

- NOTES: ② QUANTITY SHOWN REPRESENTS TWO SETS. ③ FOR FURTHER INFORMATION REGARDING END SECTION A, B, C, AND E BARS REFER TO RCB CULVERT - BARREL DETAILS. ④ LENGTHS OF E1 & E2 BARS SHOWN ARE ADDITIONAL LENGTHS REQUIRED FOR THE END SECTION. LAP SPLICES, AS REQUIRED, SHALL BE IN ACCORDANCE WITH RCB BARREL STANDARD NOTES. ⑤ 4-SETS OF N4-E1 BARS REQUIRED. ⑥ 3-SETS OF 20-E2 BARS REQUIRED WITH LENGTHS AS SHOWN CORRESPONDING TO SHORT EXTERIOR WALL, INTERIOR WALL, AND LONG EXTERIOR WALL. ⑦ C3 AND C4 BAR SIZE AND SPACING MAY DIFFER FROM BARREL SECTION.

APPROVED BY BRIDGE ENGINEER *Scott J. Smith* DATE 4/2/10

OKLAHOMA DEPT. OF TRANSPORTATION
BRIDGE STANDARD (ENGLISH)
 RCB CULVERTS - END SECTION DETAILS
 DOUBLE CELL - 10'-0" HEIGHT - 30"
 SHEET NO. 2 OF 3

2009 SPECIFICATIONS | RCB-E2-H10-30-2 | 01E | B-727E