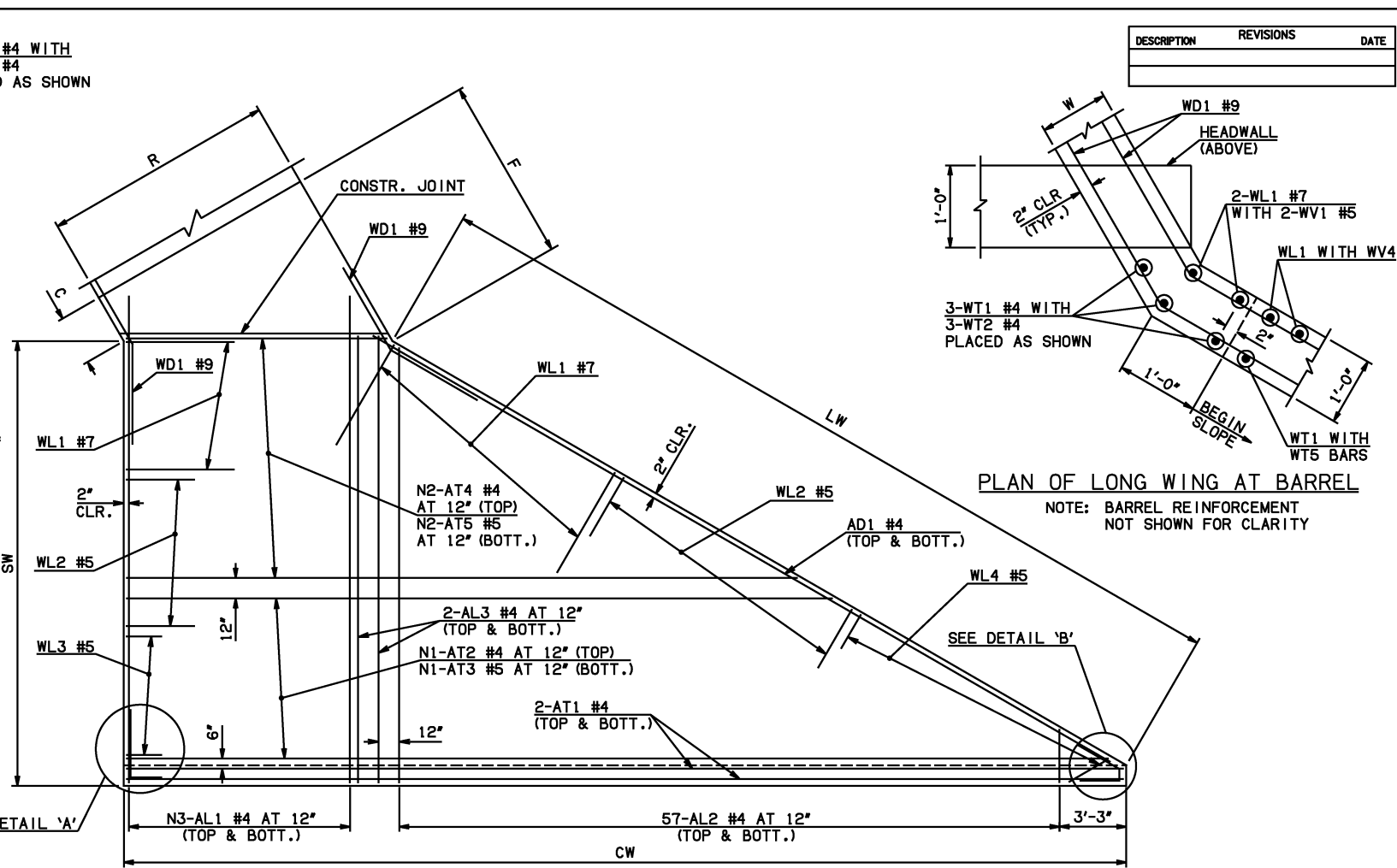
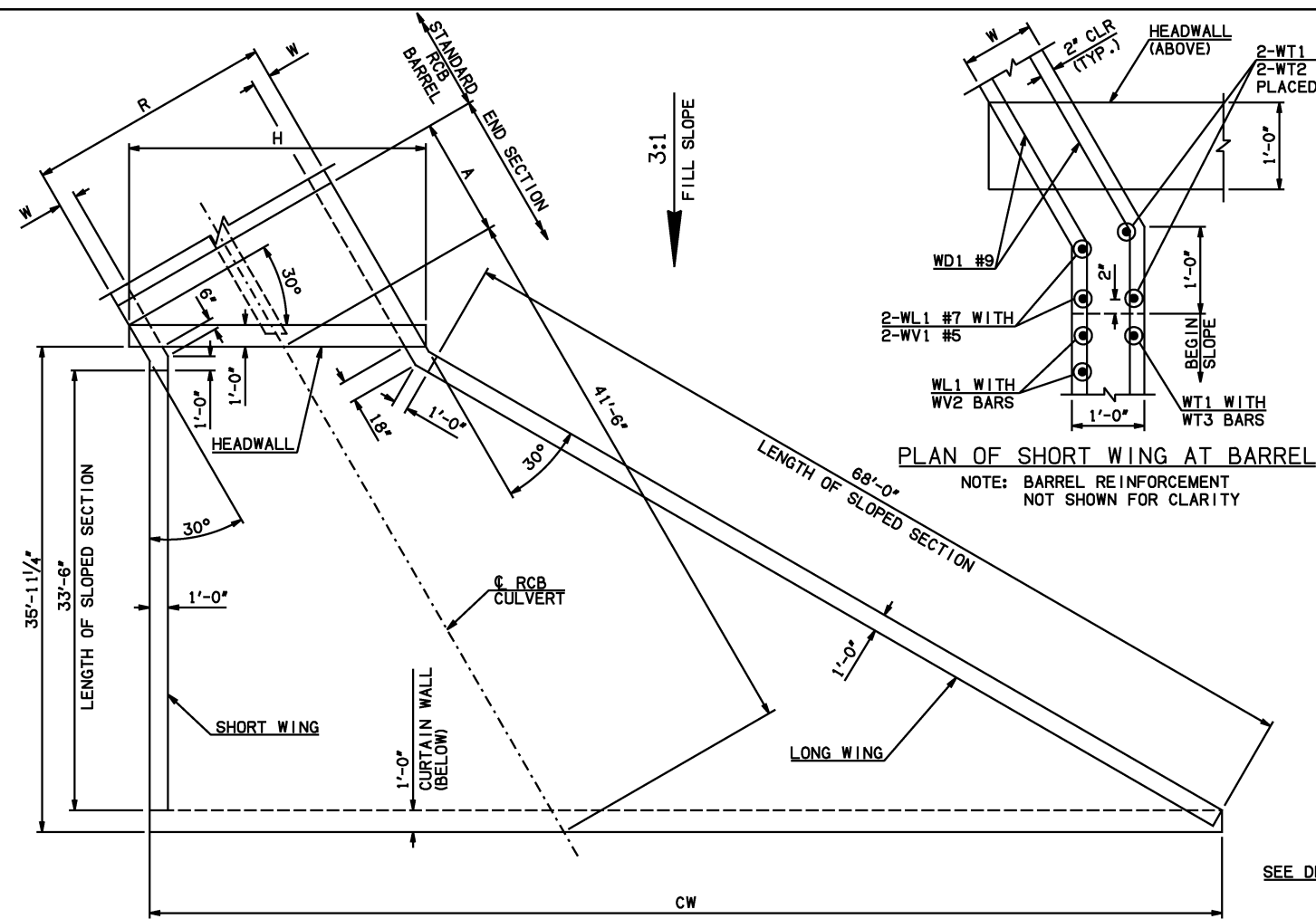


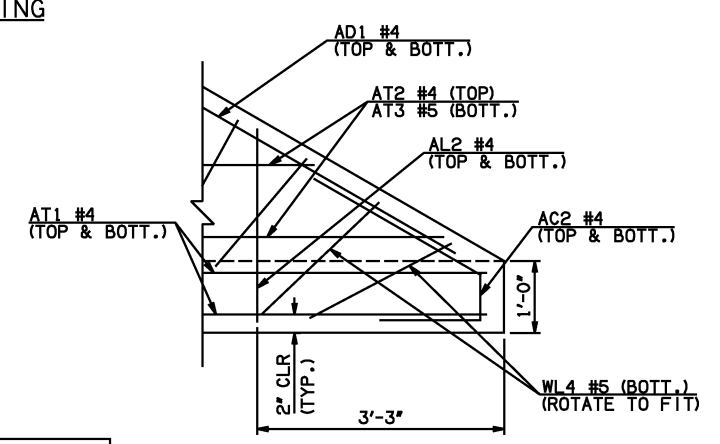
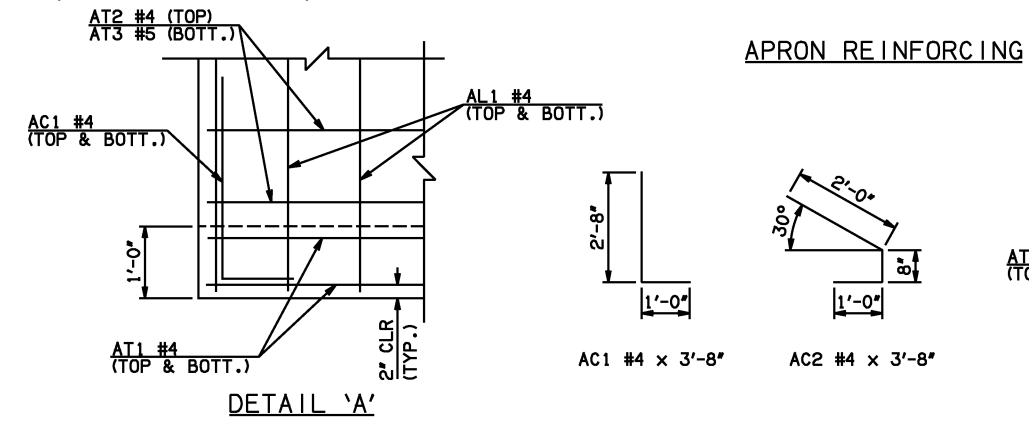
DESCRIPTION	REVISIONS	DATE



**END SECTION VARIABLE DIMENSIONS**

NOTE: SEE END SECTION DETAILS SHEET NO. 2 OF 3 FOR VARIABLE REINFORCING QUANTITIES.

SPAN	W	A	B	C	CW	D	E	F	G	H	LW	R	SW
10'	12"	9'-0"	2'-4 1/4"	3'-2"	86'-0"	3'-5 1/4"	15'-7 3/4"	16'-3 1/2"	16'-6 3/4"	27'-1 3/4"	68'-8 3/4"	23'-0"	35'-2 3/4"
12'	12"	10'-0"	2'-2 1/2"	3'-0 1/4"	90'-7 1/2"	3'-3 1/2"	17'-9 1/2"	18'-5 1/2"	18'-8 1/2"	31'-9"	68'-8 3/4"	27'-0"	35'-2 3/4"
14'	12"	11'-0"	2'-0 1/2"	2'-10 1/4"	95'-3"	3'-1 1/2"	19'-11 1/2"	20'-7 1/4"	20'-10 1/2"	36'-4 1/2"	68'-8 3/4"	31'-0"	35'-2 3/4"
16'	13"	13'-0"	2'-10 1/4"	3'-10 1/4"	99'-10 1/4"	3'-11 3/4"	23'-10 3/4"	23'-10 3/4"	24'-0 1/4"	41'-2 1/4"	68'-6 3/4"	35'-2"	35'-0 3/4"
18'	14"	14'-0"	2'-7 3/4"	3'-10"	104'-5 3/4"	3'-9 3/4"	25'-4 1/4"	26'-2 1/2"	26'-2 1/4"	46'-0"	68'-4 3/4"	39'-4"	34'-10 3/4"
20'	15"	15'-0"	2'-5 1/4"	3'-10"	109'-1 1/4"	3'-8"	27'-6 3/4"	28'-6"	28'-4"	50'-9 3/4"	68'-2 3/4"	43'-6"	34'-8 3/4"



**APRON BAR LIST**

ONE APRON SHOWN

MARK	SIZE	FORM	10' SPAN		12' SPAN		14' SPAN		16' SPAN		18' SPAN		20' SPAN				
			QTY.	LENGTH	REMARKS	QTY.	LENGTH	REMARKS	QTY.	LENGTH	REMARKS	QTY.	LENGTH	REMARKS	QTY.	LENGTH	REMARKS
AC1	#4	BNT	2	3'-8"		2	3'-8"		2	3'-8"		2	3'-8"		2	3'-8"	
AC2	#4	BNT	2	3'-8"		2	3'-8"		2	3'-8"		2	3'-8"		2	3'-8"	
AD1	#4	STR	2	72'-0"		2	72'-0"		2	72'-0"		2	72'-0"		2	72'-0"	
AL1	#4	STR	50	37'-9"		60	37'-9"		68	37'-9"		78	37'-9"		88	37'-9"	
AL2	#4	STR	114	18'-8" AVG.	2'-6" TO 34'-10"	114	18'-8" AVG.	2'-6" TO 34'-10"	114	18'-8" AVG.	2'-6" TO 34'-10"	114	18'-8" AVG.	2'-6" TO 34'-10"	114	18'-8" AVG.	2'-6" TO 34'-10"
AL3	#4	STR	4	35'-9"		4	35'-9"		4	35'-9"		4	35'-9"		4	35'-9"	
AT1	#4	STR	4	88'-2"		4	92'-9"		4	97'-4"		4	102'-0"		4	106'-7"	
AT2	#4	STR	15	75'-3 1/2" AVG.	63'-2" TO 87'-5"	18	77'-3 1/2" AVG.	62'-7" TO 92'-0"	20	80'-2" AVG.	63'-9" TO 96'-7"	23	82'-2 1/2" AVG.	63'-2" TO 101'-3"	26	84'-2 1/2" AVG.	62'-7" TO 105'-10"
AT3	#5	STR	15	75'-3 1/2" AVG.	63'-2" TO 87'-5"	18	77'-3 1/2" AVG.	62'-7" TO 92'-0"	20	80'-2" AVG.	63'-9" TO 96'-7"	23	82'-2 1/2" AVG.	63'-2" TO 101'-3"	26	84'-2 1/2" AVG.	62'-7" TO 105'-10"
AT4	#4	STR	20	42'-5 1/2" AVG.	26'-0" TO 58'-11"	17	44'-5 1/2" AVG.	30'-7" TO 58'-4"	15	47'-4 1/2" AVG.	35'-3" TO 59'-6"	12	49'-4 1/2" AVG.	39'-10" TO 58'-11"	9	51'-5" AVG.	44'-6" TO 58'-4"
AT5	#5	STR	20	42'-5 1/2" AVG.	26'-0" TO 58'-11"	17	44'-5 1/2" AVG.	30'-7" TO 58'-4"	15	47'-4 1/2" AVG.	35'-3" TO 59'-6"	12	49'-4 1/2" AVG.	39'-10" TO 58'-11"	9	51'-5" AVG.	44'-6" TO 58'-4"

- ① INCLUDES 2'-6" LAP.
- ② QUANTITY SHOWN REPRESENTS TWO SETS.

APPROVED BY BRIDGE ENGINEER *Scott J. Smith* DATE 4/2/10

**OKLAHOMA DEPT. OF TRANSPORTATION**  
**BRIDGE STANDARD (ENGLISH)**

RCB CULVERTS - END SECTION DETAILS  
 DOUBLE CELL - 10'-0" HEIGHT - 30°  
 SHEET NO. 1 OF 3

2009 SPECIFICATIONS | RCB-E2-H10-30-1 | 01E | B-726E