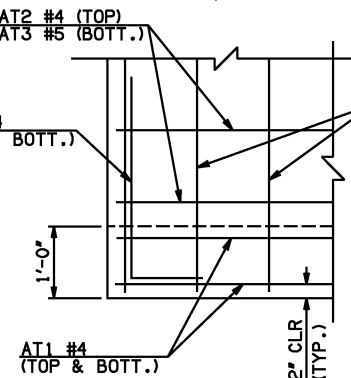


END SECTION PLAN

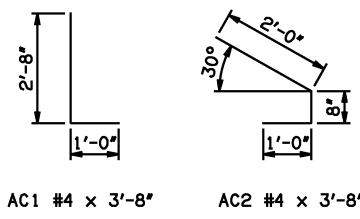
NOTE: SEE END SECTION DETAILS SHEET NO. 2 OF 3 FOR VARIABLE REINFORCING QUANTITIES.

END SECTION VARIABLE DIMENSIONS												
SPAN	W	A	B	C	CW	D	E	F	G	H	LW	SW
10'	12"	9'-0"	2'-4 1/4"	3'-2"	80'-9 3/4"	3'-5 1/4"	15'-7 3/4"	16'-3 1/2"	16'-6 3/4"	27'-1 3/4"	62'-8 3/4"	32'-2 3/4"
12'	12"	10'-0"	2'-2 1/2"	3'-0 1/4"	85'-5 1/4"	3'-3 1/2"	17'-9 1/2"	18'-5 1/2"	18'-8 1/2"	31'-9"	62'-8 3/4"	32'-2 3/4"
14'	12"	11'-0"	2'-0 1/2"	2'-10 1/4"	90'-0 1/2"	3'-1 1/2"	19'-11 1/2"	20'-7 1/4"	20'-10 1/2"	36'-4 1/2"	62'-8 3/4"	32'-2 3/4"
16'	13"	13'-0"	2'-10 1/4"	3'-10 1/4"	94'-8"	3'-11 3/4"	23'-1 3/4"	23'-10 3/4"	24'-0 1/4"	41'-2 1/4"	62'-6 3/4"	32'-0 3/4"
18'	14"	14'-0"	2'-7 3/4"	3'-10"	99'-3 1/2"	3'-9 3/4"	25'-4 1/4"	26'-2 1/2"	26'-2 1/4"	46'-0"	62'-4 3/4"	31'-10 3/4"



DETAIL 'A'

APRON REINFORCING



DETAIL 'B'

- ① INCLUDES 2'-6" LAP.
- ② QUANTITY SHOWN REPRESENTS TWO SETS.

APRON BAR LIST																	
ONE APRON SHOWN																	
MARK	SIZE	FORM	10' SPAN			12' SPAN			14' SPAN			16' SPAN			18' SPAN		
			QTY.	LENGTH	REMARKS	QTY.	LENGTH	REMARKS	QTY.	LENGTH	REMARKS	QTY.	LENGTH	REMARKS	QTY.	LENGTH	REMARKS
AC1	#4	BNT	2	3'-8"		2	3'-8"		2	3'-8"		2	3'-8"		2	3'-8"	
AC2	#4	BNT	2	3'-8"		2	3'-8"		2	3'-8"		2	3'-8"		2	3'-8"	
AD1	#4	STR	2	66'-0"		2	66'-0"		2	66'-0"		2	66'-0"		2	66'-0"	
AL1	#4	STR	50	34'-9"		60	34'-9"		68	34'-9"		78	34'-9"		88	34'-9"	
AL2	#4	STR	104	17'-2½" AVG.	2'-6" TO 31'-11"	104	17'-2½" AVG.	2'-6" TO 31'-11"	104	17'-2½" AVG.	2'-6" TO 31'-11"	104	17'-2½" AVG.	2'-6" TO 31'-11"	104	17'-2½" AVG.	2'-6" TO 31'-11"
AL3	#4	STR	4	32'-9"		4	32'-9"		4	32'-9"		4	32'-9"		4	32'-9"	
AT1	#4	STR	4	82'-11"		4	87'-7"		4	92'-2"		4	96'-9"		4	101'-5"	
AT2	#4	STR	12	72'-8" AVG.	63'-2" TO 82'-2"	15	74'-8½" AVG.	62'-7" TO 86'-10"	17	77'-7" AVG.	63'-9" TO 91'-5"	20	79'-7½" AVG.	63'-2" TO 96'-1"	23	81'-7½" AVG.	62'-7" TO 100'-8"
AT3	#5	STR	12	72'-8" AVG.	63'-2" TO 82'-2"	15	74'-8½" AVG.	62'-7" TO 86'-10"	17	77'-7" AVG.	63'-9" TO 91'-5"	20	79'-7½" AVG.	63'-2" TO 96'-1"	23	81'-7½" AVG.	62'-7" TO 100'-8"
AT4	#4	STR	20	42'-5½" AVG.	26'-0" TO 58'-11"	17	44'-5½" AVG.	30'-7" TO 58'-4"	15	47'-4½" AVG.	35'-3" TO 59'-6"	12	49'-4½" AVG.	39'-10" TO 58'-11"	9	51'-5" AVG.	44'-6" TO 58'-4"
AT5	#5	STR	20	42'-5½" AVG.	26'-0" TO 58'-11"	17	44'-5½" AVG.	30'-7" TO 58'-4"	15	47'-4½" AVG.	35'-3" TO 59'-6"	12	49'-4½" AVG.	39'-10" TO 58'-11"	9	51'-5" AVG.	44'-6" TO 58'-4"

APPROVED BY BRIDGE ENGINEER *Scott L. Luch* DATE 4/2/10

OKLAHOMA DEPT. OF TRANSPORTATION
BRIDGE STANDARD (ENGLISH)
 RCB CULVERTS - END SECTION DETAILS
 DOUBLE CELL - 9'-0" HEIGHT - 30°
 SHEET NO. 1 OF 3

2009 SPECIFICATIONS RCB-E2-H9-30-1 01E
 B-723E