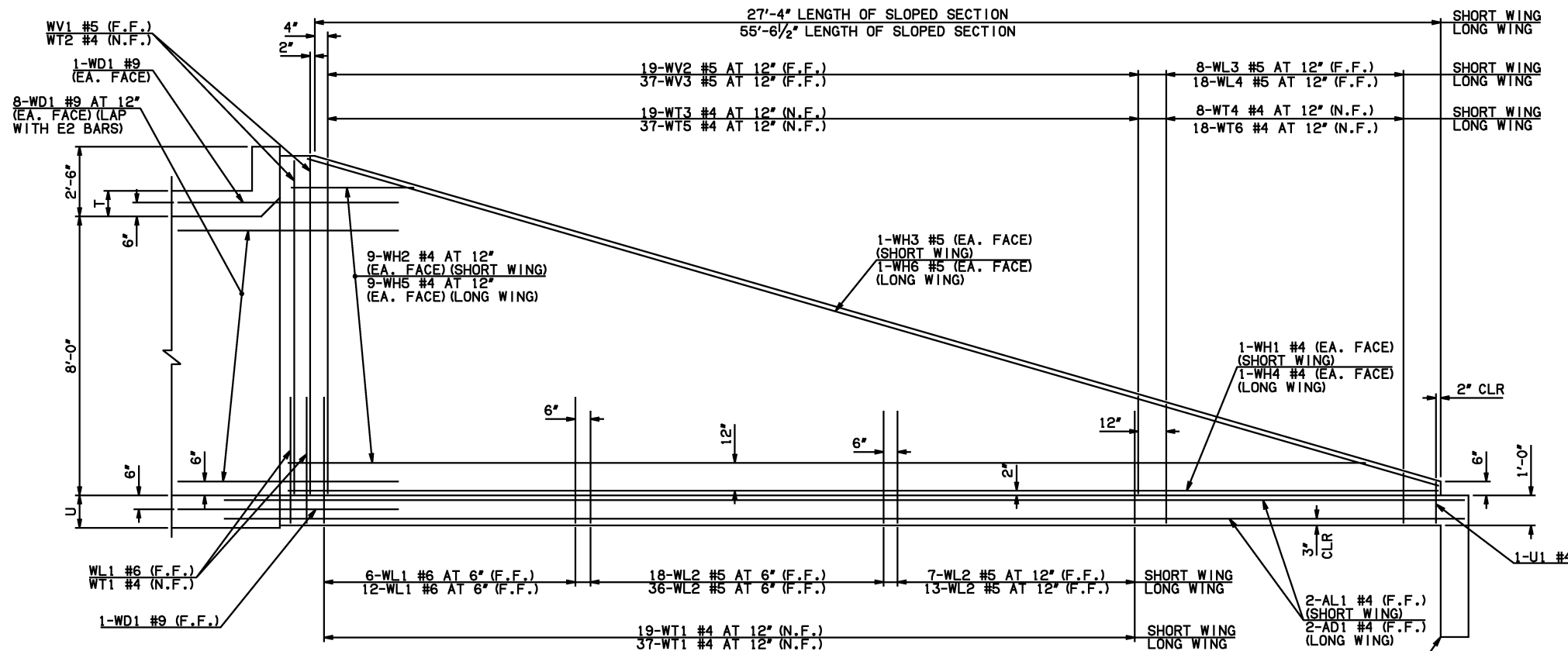
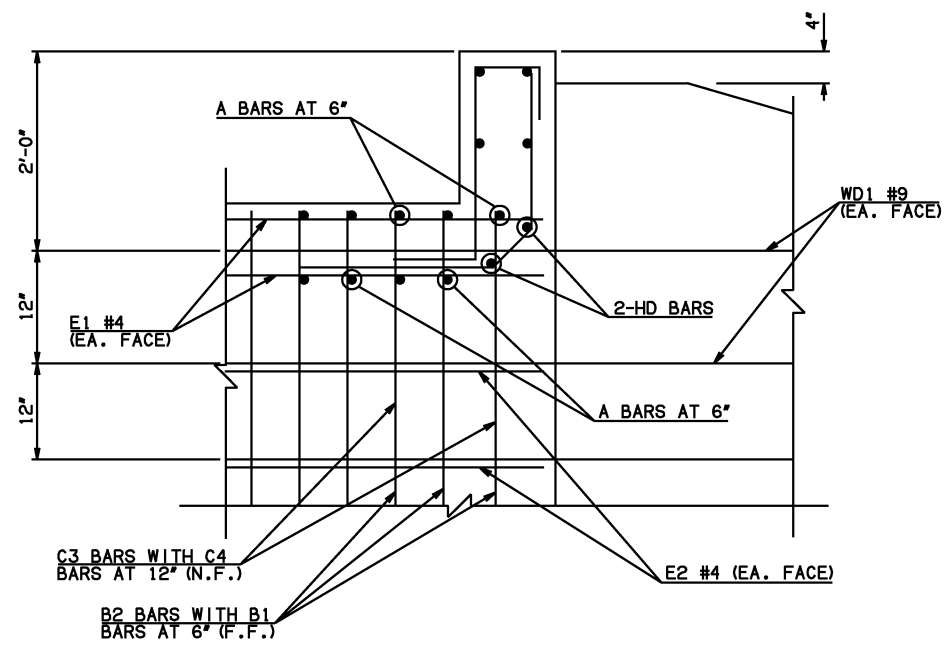


| DESCRIPTION | REVISIONS | DATE |
|-------------|-----------|------|
| | | |

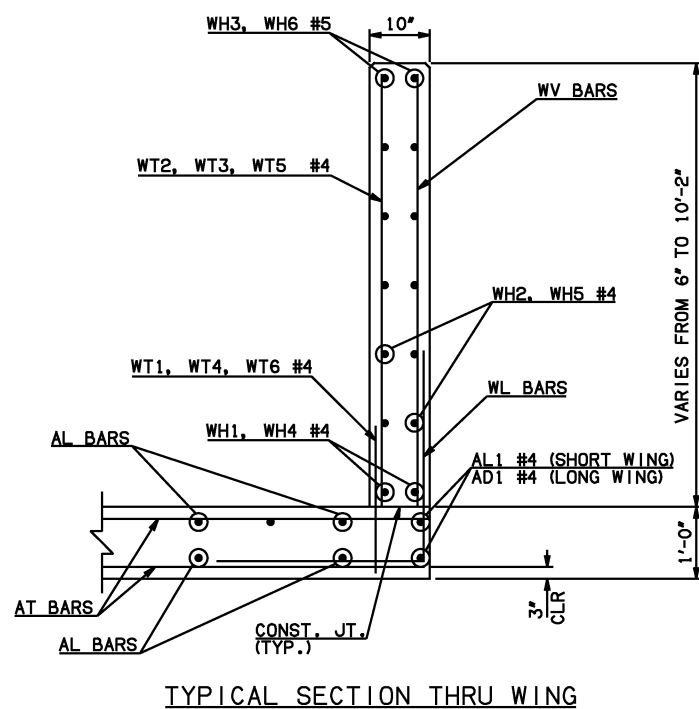


NOTE: F.F. = FAR FACE
N.F. = NEAR FACE

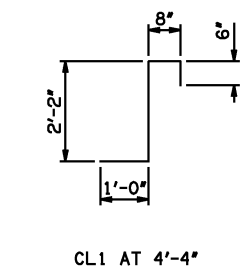
WING ELEVATION



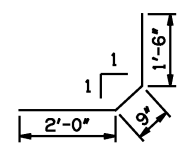
③ HEADWALL DETAIL AT EXTERIOR WALL



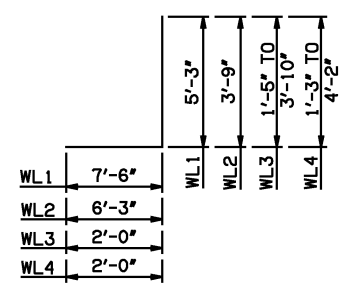
TYPICAL SECTION THRU WING



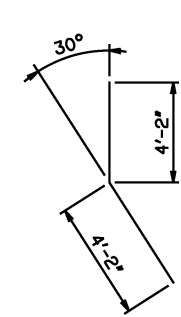
CL1 AT 4'-4"



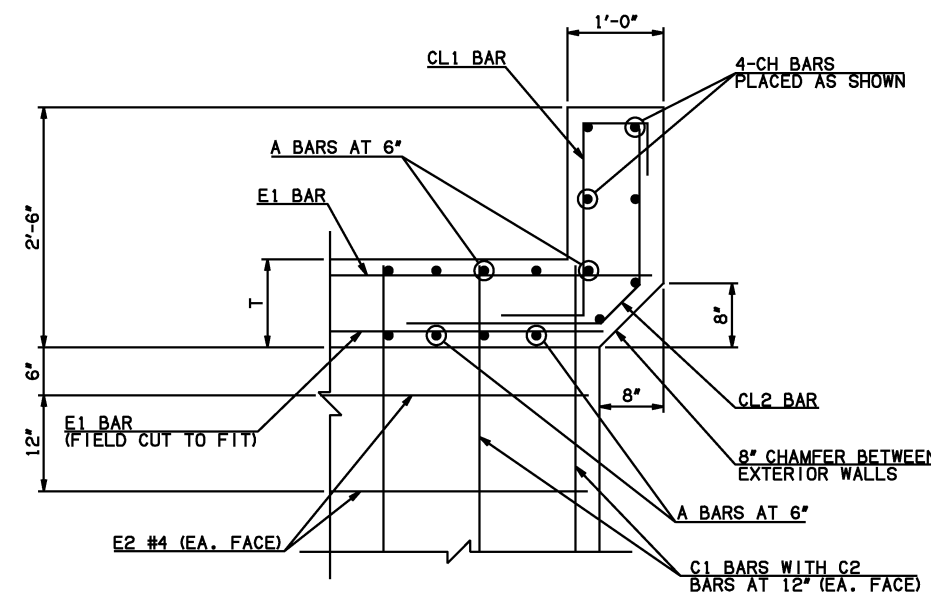
CL2 AT 4'-3"



WL1 #6 x 12'-9"
WL2 #5 x 10'-0"
WL3 #5 x 4'-7 1/2" AVG.
WL4 #5 x 4'-8 1/2" AVG.



WD1 #9 x 8'-4"



③ HEADWALL DETAIL AT INTERIOR WALL
DIMENSION SHOWN NORMAL TO HEADWALL

NOTES:

- ② QUANTITY SHOWN REPRESENTS TWO SETS.
- ③ FOR FURTHER INFORMATION REGARDING END SECTION BARS A, B, C, E1, AND E2, REFER TO RCB CULVERT - BARREL DETAILS.

| WINGWALL BAR LIST (LONG AND SHORT WING INCLUDED) | | | | |
|---|------|------|------|--------------------------------|
| MARK | SIZE | QTY. | FORM | REMARKS |
| WD1 | #9 | 38 | BNT | 8'-4" |
| WH1 | #4 | 2 | STR | 28'-4" |
| WH2 | #4 | 18 | STR | 14'-9" AVG. 3'-5" TO 26'-1" |
| WH3 | #5 | 2 | STR | 28'-9" |
| WH4 | #4 | 2 | STR | 56'-6" |
| WH5 | #4 | 18 | STR | 28'-10" AVG. 5'-10" TO 51'-10" |
| WH6 | #5 | 2 | STR | 56'-2" |
| WL1 | #6 | 22 | BNT | 12'-9" |
| WL2 | #5 | 74 | BNT | 10'-0" |
| WL3 | #5 | 8 | BNT | 4'-7 1/2" AVG. 3'-5" TO 5'-10" |
| WL4 | #5 | 18 | BNT | 4'-8 1/2" AVG. 3'-3" TO 6'-2" |
| WT1 | #4 | 61 | STR | 2'-10" |
| WT2 | #4 | 5 | STR | 10'-0" |
| WT3 | #4 | 19 | STR | 6'-8" AVG. 3'-6" TO 9'-10" |
| WT4 | #4 | 8 | STR | 2'-7 1/2" AVG. 1'-5" TO 3'-10" |
| WT5 | #4 | 37 | STR | 6'-9 1/2" AVG. 3'-8" TO 9'-11" |
| WT6 | #4 | 18 | STR | 2'-8 1/2" AVG. 1'-3" TO 4'-2" |
| WV1 | #5 | 4 | STR | 10'-0" |
| WV2 | #5 | 19 | STR | 6'-8" AVG. 3'-6" TO 9'-10" |
| WV3 | #5 | 37 | STR | 6'-9 1/2" AVG. 3'-8" TO 9'-11" |
| U1 | #4 | 2 | BNT | 2'-8" |

HEADWALL BAR LIST

| ONE HEADWALL SHOWN | | | | | | | | | | | | | | | | |
|--------------------|------|---------|------|--------|----------|------|--------|----------|------|--------|----------|------|--------|----------|------|---------|
| MARK | FORM | 8' SPAN | | | 10' SPAN | | | 12' SPAN | | | 14' SPAN | | | 16' SPAN | | |
| | | SIZE | QTY. | LENGTH | SIZE | QTY. | LENGTH | SIZE | QTY. | LENGTH | SIZE | QTY. | LENGTH | SIZE | QTY. | LENGTH |
| CH | STR | #4 | 4 | 22'-2" | #6 | 4 | 26'-9" | #6 | 4 | 31'-5" | #6 | 4 | 36'-0" | #8 | 4 | 40'-10" |
| CL1 | BNT | #4 | 22 | 4'-4" | #5 | 27 | 4'-4" | #5 | 32 | 4'-4" | #5 | 36 | 4'-4" | #5 | 41 | 4'-4" |
| CL2 | BNT | #4 | 22 | 4'-3" | #5 | 27 | 4'-3" | #5 | 32 | 4'-3" | #5 | 36 | 4'-3" | #5 | 41 | 4'-3" |
| HD | STR | #6 | 2 | 22'-2" | #8 | 2 | 26'-9" | #8 | 2 | 31'-5" | #8 | 2 | 36'-0" | #9 | 2 | 40'-10" |

APPROVED BY BRIDGE ENGINEER *Scott L. Smith* DATE 4/2/10

OKLAHOMA DEPT. OF TRANSPORTATION
BRIDGE STANDARD (ENGLISH)
 RCB CULVERTS - END SECTION DETAILS
 DOUBLE CELL - 8'-0" HEIGHT - 30°
 SHEET NO. 3 OF 3

2009 SPECIFICATIONS RCB-E2-H8-30-3 01E B-722E