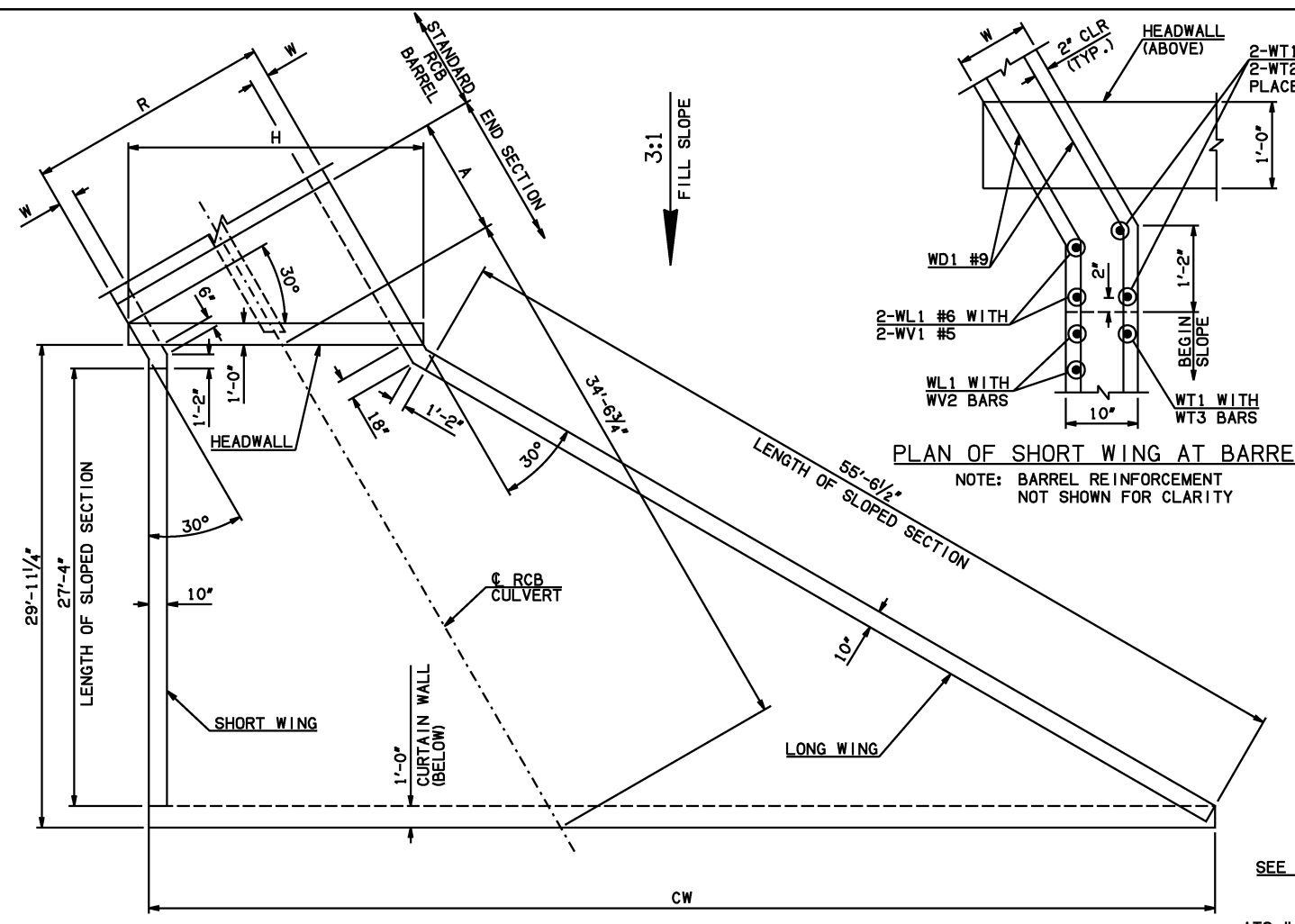


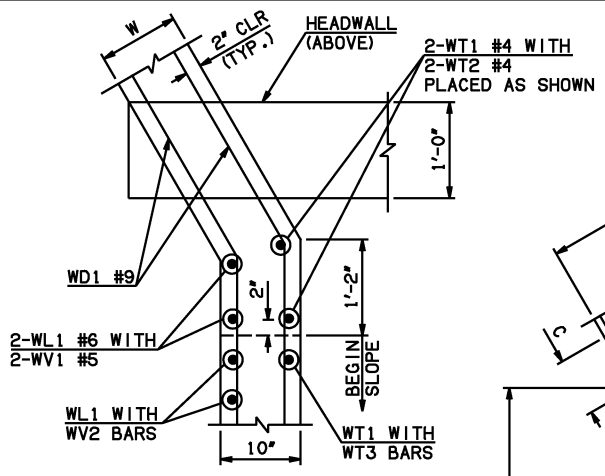
DESCRIPTION	REVISIONS	DATE



END SECTION PLAN

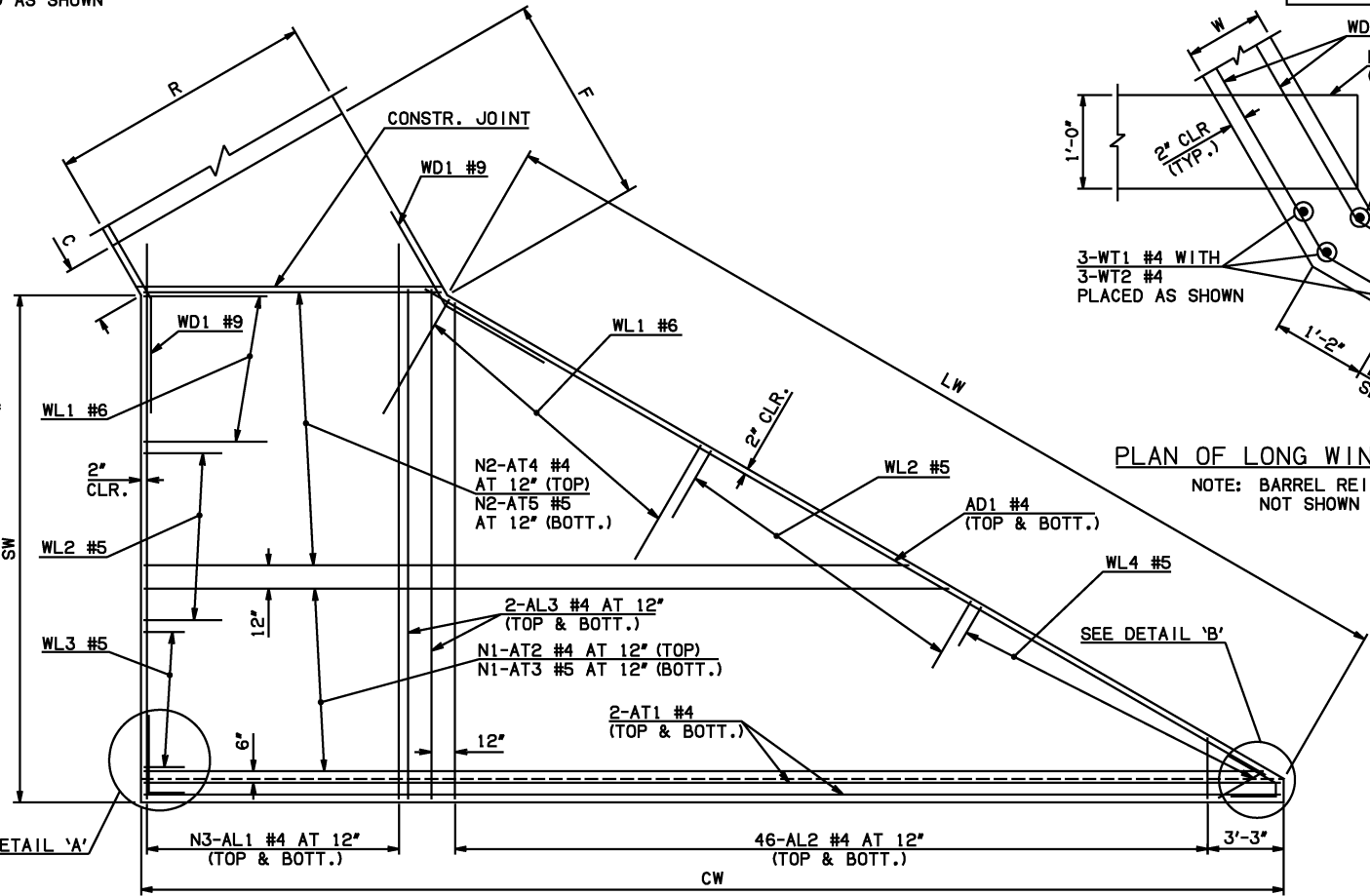
NOTE: SEE END SECTION DETAILS SHEET NO. 2 OF 3 FOR VARIABLE REINFORCING QUANTITIES.

SPAN	W	A	B	C	CW	D	E	F	G	H	LW	R	SW
8'	12"	8'-0"	2'-6 ¹ / ₄ "	3'-8"	70'-6"	3'-7"	13'-5 ³ / ₄ "	14'-5 ³ / ₄ "	14'-5"	22'-6 ¹ / ₄ "	56'-1 ³ / ₄ "	19'-0"	28'-11 ¹ / ₄ "
10'	12"	9'-0"	2'-4 ¹ / ₄ "	3'-6"	75'-1 ¹ / ₄ "	3'-5 ¹ / ₄ "	15'-7 ³ / ₄ "	16'-7 ¹ / ₂ "	16'-6 ³ / ₄ "	27'-1 ³ / ₄ "	56'-1 ³ / ₄ "	23'-0"	28'-11 ¹ / ₄ "
12'	12"	10'-0"	2'-2 ¹ / ₂ "	3'-4 ¹ / ₄ "	79'-8 ³ / ₄ "	3'-3 ¹ / ₂ "	17'-9 ¹ / ₂ "	18'-9 ¹ / ₂ "	18'-8 ¹ / ₂ "	31'-9"	56'-1 ³ / ₄ "	27'-0"	28'-11 ¹ / ₄ "
14'	12"	11'-0"	2'-0 ¹ / ₂ "	3'-2 ¹ / ₄ "	84'-4 ¹ / ₄ "	3'-1 ¹ / ₂ "	19'-11 ¹ / ₂ "	20'-10 ¹ / ₂ "	36'-4 ¹ / ₂ "	56'-1 ³ / ₄ "	31'-0"	31'-0"	28'-11 ¹ / ₄ "
16'	13"	13'-0"	2'-10 ¹ / ₄ "	4'-2 ¹ / ₄ "	88'-11 ¹ / ₂ "	3'-11 ³ / ₄ "	23'-1 ³ / ₄ "	24'-2 ³ / ₄ "	24'-0 ¹ / ₄ "	41'-2 ¹ / ₄ "	55'-11 ³ / ₄ "	35'-2"	28'-9 ¹ / ₄ "



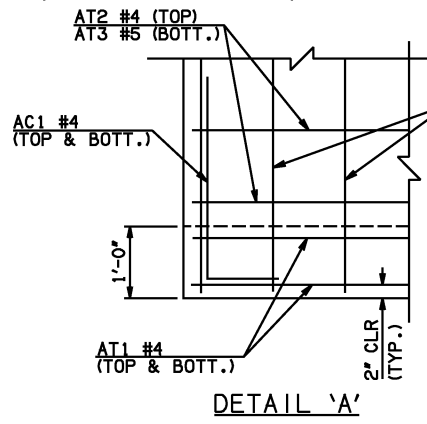
PLAN OF SHORT WING AT BARREL

NOTE: BARREL REINFORCEMENT NOT SHOWN FOR CLARITY



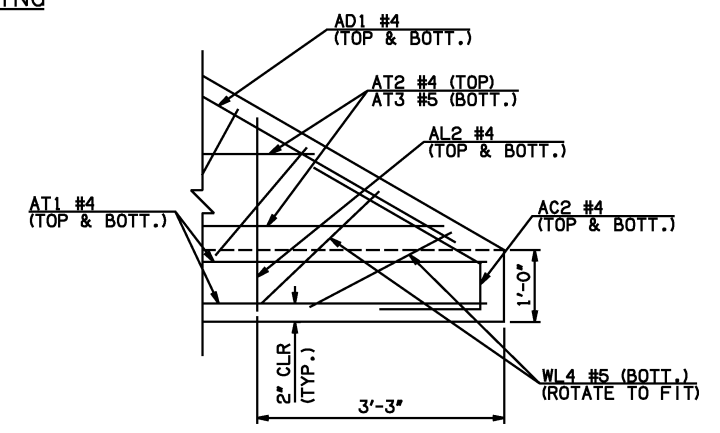
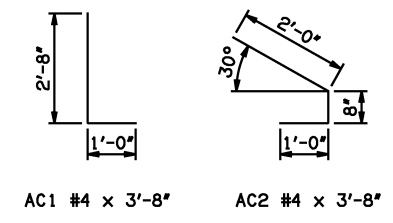
PLAN OF LONG WING AT BARREL

NOTE: BARREL REINFORCEMENT NOT SHOWN FOR CLARITY



DETAIL 'A'

APRON REINFORCING



DETAIL 'B'

- ① INCLUDES 2'-6" LAP.
- ② QUANTITY SHOWN REPRESENTS TWO SETS.

APRON BAR LIST

MARK	SIZE	FORM	ONE APRON SHOWN																			
			8' SPAN				10' SPAN				12' SPAN				14' SPAN				16' SPAN			
			QTY.	LENGTH	REMARKS	QTY.	LENGTH	REMARKS	QTY.	LENGTH	REMARKS	QTY.	LENGTH	REMARKS	QTY.	LENGTH	REMARKS					
	AC1	#4	BNT	2	3'-8"		2	3'-8"		2	3'-8"		2	3'-8"		2	3'-8"					
	AC2	#4	BNT	2	3'-8"		2	3'-8"		2	3'-8"		2	3'-8"		2	3'-8"					
①	AD1	#4	STR	2	57'-6"		2	57'-6"		2	57'-6"		2	57'-6"		2	57'-6"					
	AL1	#4	STR	40	31'-9"		50	31'-9"		60	31'-9"		68	31'-9"		78	31'-9"					
②	AL2	#4	STR	92	15'-5 ¹ / ₂ " AVG.	2'-6" TO 28'-5"	92	15'-5 ¹ / ₂ " AVG.	2'-6" TO 28'-5"	92	15'-5 ¹ / ₂ " AVG.	2'-6" TO 28'-5"	92	15'-5 ¹ / ₂ " AVG.	2'-6" TO 28'-5"	92	15'-5 ¹ / ₂ " AVG.					
	AL3	#4	STR	4	29'-9"		4	29'-9"		4	29'-9"		4	29'-9"		4	29'-9"					
①	AT1	#4	STR	4	72'-7"		4	77'-3"		4	81'-10"		4	86'-6"		4	91'-1"					
①	AT2	#4	STR	6	67'-6 ¹ / ₂ " AVG.	63'-3" TO 71'-10"	9	69'-7" AVG.	62'-8" TO 76'-6"	11	72'-5" AVG.	63'-9" TO 81'-1"	14	74'-6" AVG.	63'-3" TO 85'-9"	17	76'-6" AVG.	62'-8" TO 90'-4"				
①	AT3	#5	STR	6	67'-6 ¹ / ₂ " AVG.	63'-3" TO 71'-10"	9	69'-7" AVG.	62'-8" TO 76'-6"	11	72'-5" AVG.	63'-9" TO 81'-1"	14	74'-6" AVG.	63'-3" TO 85'-9"	17	76'-6" AVG.	62'-8" TO 90'-4"				
	AT4	#4	STR	23	39'-11 ¹ / ₂ " AVG.	20'-11" TO 59'-0"	20	41'-11 ¹ / ₂ " AVG.	25'-6" TO 58'-5"	18	44'-10" AVG.	30'-1" TO 59'-7"	15	46'-10 ¹ / ₂ " AVG.	34'-9" TO 59'-0"	12	48'-10 ¹ / ₂ " AVG.	39'-4" TO 58'-5"				
	AT5	#5	STR	23	39'-11 ¹ / ₂ " AVG.	20'-11" TO 59'-0"	20	41'-11 ¹ / ₂ " AVG.	25'-6" TO 58'-5"	18	44'-10" AVG.	30'-1" TO 59'-7"	15	46'-10 ¹ / ₂ " AVG.	34'-9" TO 59'-0"	12	48'-10 ¹ / ₂ " AVG.	39'-4" TO 58'-5"				

APPROVED BY BRIDGE ENGINEER *Scott J. Smith* DATE 4/2/10

OKLAHOMA DEPT. OF TRANSPORTATION
BRIDGE STANDARD (ENGLISH)
 RCB CULVERTS - END SECTION DETAILS
 DOUBLE CELL - 8'-0" HEIGHT - 30°
 SHEET NO. 1 OF 3

2009 SPECIFICATIONS | RCB-E2-H8-30-1 | 01E | B-720E